



pennsylvania

DEPARTMENT OF HUMAN SERVICES
OFFICE OF MENTAL HEALTH AND
SUBSTANCE ABUSE SERVICES



Pennsylvania State Hospital Risk Management Summary and Indicator Report
May 2022

Prepared by:
Christina Sterner, M.S. CPIE
Wernersville State Hospital
E-Mail: csterner@pa.gov
Contributors:
SMH CPIEs & PI Staff
Valerie Minnich, RPh
November 1, 2022

Introduction

The State Hospital Risk Management System defines an incident as any patient-related event that has the potential for, or which results in, a negative impact upon the quality of patient care or services, including injury or death of a person served in the state hospital system. Past reports can be found on the DHS website using the following link.

<http://www.dhs.pa.gov/publications/forproviders/statehospitalriskmanagementsummaryreports/>

The data dictionary for the measurement system was updated on October 1, 2008, and is available for review as attachments to OMHSAS Bulletin titled Management of Incidents: SI-815 Incident Reporting and Risk Management Policy and Procedural Change. (Available via bulletin search at <http://www.dhs.pa.gov/> .)

Table of Contents

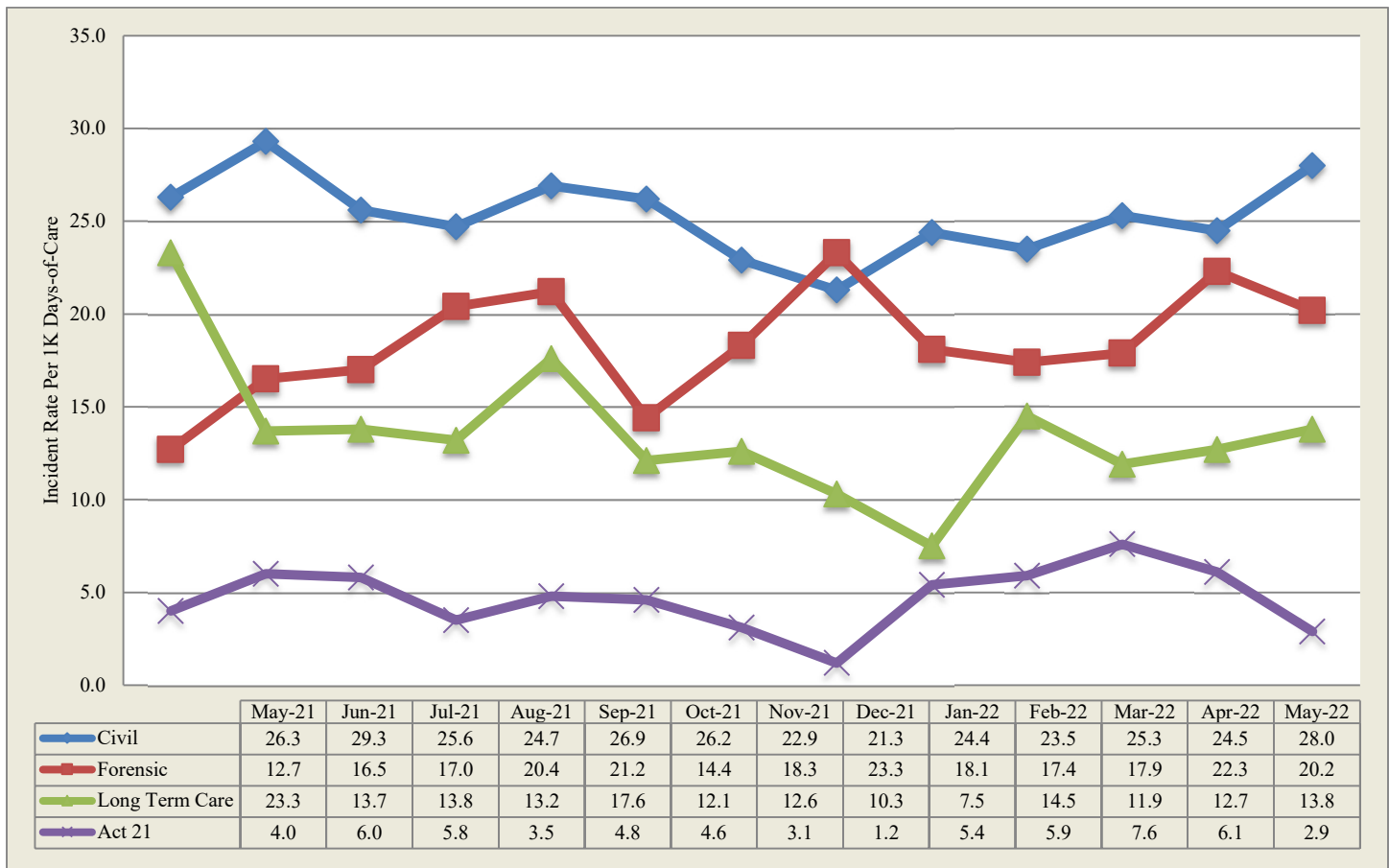
Indicator/Measure	Table	Page
Risk Management Indicators		
Census and Rates of Incidents	1	3
Thirteen-Month Trend of Incidents		3
Six-Month Summary of Selected Events		4
Category or Cause of Incidents: Civil	2	5
Primary Effect of Incidents: Civil	3	6
Category or Cause of Incidents: Forensic	4	7
Effect of Incidents: Forensic	5	7
Cause of Incidents: Long Term Care	6	8
Effect of Incidents: Long Term Care	7	8
Cause of Incidents: SRTP	8	9
Effect of Incidents: SRTP	9	9
13-Month Rate of Type 1 Falls per 1,000 Days of Care	10	10
13-Month Trend of Type 1 Falls		10
Hours of Seclusion Use	11	11
Number of Seclusion Events	12	11
Total Hours of Mechanical Restraint by Unit	13	11
Hours of Mechanical Restraint Use: 12 Months	14	11
Number of Mechanical Restraint Events: 12 Months	15	11
Hours of Physical Restraint Use by Unit	16	12
Hours of Physical Restraint Use: 12 Months	17	12
Number of Physical Restraint Events: 12 Months	18	12
24-Month Trend of Restraint and Seclusion Hours		13
Patient-to-Patient Assaults by Unit	19	14
13-Month Rate of Patient-to-Patient Assault Events with Injury per 1,000 Days-of-Care	20	14
Patient-to-Staff Assaults by Unit	21	15
13-Month Rate of Patient-to-Staff Assaults with Injury to Staff per 1,000 Days-of-Care	22	15
Risk Adjusted Table of Selected Safety Indicators	23	16
Wellness Indicators		
Reasons for Hospitalization as a Result of an Incident	24	17
Medication Use Indicators		
Benzodiazepines	25	18
Multiple Atypicals	26	18
Typical-Atypical	27	18
STAT Medication Usage		
Civil	28	19
Forensic	29	20
ACT 21 (SRTP)	30	20

During May 2022, a total of 1068 incident reports were completed by the state hospital system. Additional records addressing specific categories from the previous month were included on page 4 of this report. The following is a breakdown of incidents by individual facility and type of care:

Table 1 - Number of Incident Reports

	Census 5/31/2022	Days Provided	Incidents	Per 1000 Days-of-Care
Clarks Summit	146	4482	68	15.2
Danville	159	4952	174	35.1
Norristown	110	3409	74	21.7
Torrance	149	4561	141	30.9
Warren	147	4547	192	42.2
Wernersville	264	8154	193	23.7
Total Civil	975	30105	842	28.0
Forensic				
Norristown	186	5833	119	20.4
Torrance	98	3048	60	19.7
Total Forensic	284	8881	179	20.2
Act 21				
Act 21	61	1705	5	2.9
Total Act 21	61	1705	5	2.9
Long Term Care				
South Mountain	98	3040	42	13.8
Total L. T. C.	98	3040	42	13.8
Total	1861	43731	1068	24.4

Thirteen-Month Trend of Incidents by Type of Care per 1,000 Days of Care



*Note: Rules regarding the reporting of incidents involving patient-to-patient assaults require a separate incident report form on each person involved in an altercation. This includes both the aggressor, when known and any other person involved. The numbers reported above reflect the monthly, total number of SI-815 reports coded as Patient-to-Patient Assaults and not the actual number of altercations.

The following table is refreshed each month from the most recent data (recent 6-month period) available from the State Hospital System RM database.

CATEGORY	Count	Dec_21	Jan_22	Feb_22	Mar_22	Apr_22	May_22
Accident-Injury	119	17	13	11	30	21	27
Adverse Drug Reaction	8	4		1			3
Aggression	927	132	133	117	163	193	189
Airway Obstruction type 1 Intervention	17	4	4	3		4	2
Airway Obstruction type 2 No Intervention	7		2	1	2	1	1
Alleged Nonconsensual Sexual Activity	7		2		1	1	3
Alleged Pt. Abuse	30	7	3	2	4	6	8
Assault, Pt./Pt	1561	250	299	255	244	237	276
Assault, Pt./Staff	285	47	57	38	42	55	46
AWOL/UA	20	1	4	2	3	4	6
AWOL-Attempt	28	4	4	1	9	6	4
AWOL-Late	8				4	2	2
Change in Medical Status-Stabilized	24	1	11	2	5		5
Change in Medical Status-Transferred	266	40	60	41	35	38	52
Charged post admit/crime committed prior to	2	1				1	
Communications Sys. Misuse	43	3	8	2	7	11	12
Community Incident	2		2				
Contraband Possession	78	11	6	14	20	15	12
Fall Type 1-Injury with treatment	214	38	36	34	33	31	42
Fall Type 2-No treatment needed	659	107	118	107	96	100	131
Family Concern	1				1		
Fire Setting	1						1
Illicit Substance Use/Possession	3		1	1		1	
Indeterminate/Unconfirmed Cause of Injury	61	10	5	8	17	9	12
Medication Error	84	13	9	15	15	23	9
Missing Property	20	5	1	4	3	6	1
Other	194	34	25	24	31	38	42
Procedural Treatment Error	15	3	1	5	3	1	2
Property Damage	77	14	8	6	19	17	13
Seizure	32	4	3	2	6	8	9
Self-Injurious behavior	630	86	83	90	137	88	146
Sexual Behavior	39	10	5	2	8	10	4
Smoking Violation	3	1				1	1
Substantiated Patient Abuse	5			1	1	3	
Suicide Attempt	2						2
Suicide threat/plan	19	2	1	1	6	5	4
Theft	9	2	1	2	2	2	
Unknown	1				1		
Unsubstantiated Nonconsensual Sexual Activity	3			3			
Unsubstantiated Patient Abuse	6			2	1	2	1

Table 2 - Category or Cause of Incidents in the Civil Hospitals

Primary Cat #	CLA	DAN	NOR	TOR	WAR	WER	Count
Accident-Injury	0	3	1	2	5	3	14
Aggression	4	19	7	26	42	35	133
Airway Obstruction type 1 Intervention	0	2	0	0	0	0	2
Airway Obstruction type 2 No Intervention	0	0	0	0	1	0	1
Alleged Nonconsensual Sexual Activity	0	1	0	0	2	0	3
Alleged Pt. Abuse	3	0	2	0	0	0	5
Assault, Pt./Pt	12	46	18	26	45	54	201
Assault, Pt./Staff	2	2	3	1	12	12	32
AWOL/UA	2	0	0	0	2	2	6
AWOL-Attempt	0	1	0	0	1	1	3
AWOL-Late	0	0	0	0	2	0	2
Change in Medical Status-Stabilized	2	0	0	1	0	0	3
Change in Medical Status-Transferred	9	6	2	5	6	14	42
Communications Sys. Misuse	4	3	3	0	2	0	12
Contraband Possession	0	9	0	2	1	0	12
Fall Type 1-Injury with treatment	8	0	5	12	0	10	35
Fall Type 2-No treatment needed	11	23	6	22	40	23	125
Fire Setting	0	0	0	0	1	0	1
Indeterminate/Unconfirmed Cause of Injury	1	0	4	4	0	2	11
Medication Error	0	5	0	0	0	0	5
Missing Property	0	1	0	0	0	0	1
Other	0	8	1	16	1	6	32
Procedural Treatment Error	1	0	0	0	0	0	1
Property Damage	1	6	1	0	1	1	10
Seizure	0	0	3	0	5	1	9
Self-Injurious behavior	8	36	17	23	23	26	133
Sexual Behavior	0	2	1	0	0	1	4
Smoking Violation	0	0	0	0	0	1	1
Suicide threat/plan	0	1	0	1	0	0	2
Unsubstantiated Patient Abuse	0	0	0	0	0	1	1
Totals	68	174	74	141	192	193	842

Table 3 - Primary Effect of Incidents in the Civil Hospitals

Primary effect	CLA	DAN	NOR	TOR	WAR	WER	Count
Abrasion/scrape/scratch/hematoma	10	24	11	17	10	18	90
Allergic reaction	0	0	0	0	0	1	1
Asphyxiation	1	0	0	0	0	0	1
Bite-Human	0	3	0	0	0	0	3
Body System Illness	1	2	0	0	3	0	6
Bruise/contusion/discoloration	3	1	3	9	4	7	27
Damaged or lost tooth	0	0	0	0	0	1	1
Death	0	0	1	1	0	0	2
Edema/swelling	2	0	0	2	1	1	6
Emesis	0	0	0	0	0	2	2
Epistaxis	0	0	0	1	0	0	1
Erythema/redness	2	7	0	9	5	3	26
Fever	0	0	0	0	0	1	1
Fracture	0	1	0	0	0	0	1
Ingestion of foreign body	3	2	2	0	8	10	25
Internal injury	0	0	0	1	0	0	1
Laceration: NO sutures/staples/steri-strips	0	1	1	2	3	5	12
Laceration: with steristrips/glue	0	0	0	1	0	1	2
Laceration: with sutures/staples	0	0	0	1	0	2	3
Lethargy	2	2	1	0	1	0	6
Muscle pull/strain/sprain	0	0	0	0	0	1	1
No Injury/NA	35	122	41	71	147	120	536
Other	1	2	3	14	4	6	30
Pain unspecified	0	0	4	2	0	0	6
Pain, Specified	4	7	3	5	4	13	36
Puncture/stab wound	0	0	0	1	0	0	1
Respiratory Distress	3	0	1	1	1	0	6
Seizure	0	0	3	1	1	1	6
Syncopal episode	1	0	0	0	0	0	1
Unconscious/Unresponsive	0	0	0	2	0	0	2
Totals	68	174	74	141	192	193	842

Table 4 - Cause of Incidents in the Forensic Units Category or Cause of Incidents in the Forensic Service by Unit

Primary Cat #	NSH										Total	TSH				Total	Sys Count
	51A1	51A2	51B1	51B2	51C1	51C2	10D1	10D2	10E1	10E2		FB3	FB4	FC1	FC2		
Accident-Injury				1							1					0	1
Adverse Drug Reaction				1					1		2				1	1	3
Aggression	2			4	3	3			4	4	20	3	15	10	3	31	51
Alleged Pt. Abuse			2	1							3					0	3
Assault, Pt./Pt	6	10		12	14	2	8	6	2	6	66	2		3	4	9	75
Assault, Pt./Staff				2	4		2			2	10	1	2			3	13
AWOL-Attempt			1								1					0	1
Change in Medical Status-Stabilized	2										2					0	2
Change in Medical Status-Transferred							1				1			1		1	2
Fall Type 2-No treatment needed				1							1	1				1	2
Indeterminate/Unconfirmed Cause of Injury									1		1					0	1
Medication Error	1										1					0	1
Other	2					1					3	1	2	1	2	6	9
Self-Injurious behavior			1	2				1			4		7		1	8	12
Suicide Attempt					2						2					0	2
Suicide threat/plan				1							1					0	1
Totals	13	10	4	25	23	6	12	6	8	12	119	7	27	14	12	60	179

Table 5 - Effect of Incidents in the Forensic Service by Unit

EFFECT	NSH										Total	TSH				Total	Sys Count
	51A1	51A2	51B1	51C1	51C2	51B2	10D1	10D2	10E1	10E2		FB3	FB4	FC1	FC2		
Abrasion/scrape/scratch/hematoma		2	2	1		1				2	8		3	1	1	5	13
Allergic reaction											0				1	1	1
Bite-Human		1									1	1				1	2
Bite-Insect				1							1					0	1
Bruise/contusion/discoloration				1		1			1		3					0	3
Concussion											0			1		1	1
Edema/swelling				1		1	1		1		4					0	4
Erythema/redness				1	1					1	3	1				1	4
Fracture	1										1					0	1
Ingestion of foreign body											0	4				4	4
Laceration: NO sutures/staples/steri-strips								2			2					0	2
No Injury/NA	7	7	1	16	4	19	10	4	6	8	82	6	17	13	9	45	127
Other	2				1						3	2				2	5
Pain unspecified			1							1	2					0	2
Pain, Specified	2			2		3					7					0	7
Syncopal episode	1										1					0	1
Visual changes							1				1					0	1
Totals	13	10	4	23	6	25	12	6	8	12	119	7	27	14	12	60	179

Table 6 -Cause of Incidents in the Long Term Care Facility

Cause	3A	3B	6A	6B	Count
Accident-Injury	5	2	3	1	11
Aggression	2		1		3
Change in Medical Status-Transferred	4		2	2	8
Fall Type 1-Injury with treatment	6	1			7
Fall Type 2-No treatment needed	1		1	2	4
Medication Error				3	3
Other	1				1
Procedural Treatment Error			1		1
Property Damage		3			3
Suicide threat/plan				1	1
Totals	19	6	8	9	42

Table 7 - Effect of Incidents in the Long Term Care Facility

EFFECT	3A	3B	6A	6B	Count
Abrasion/scrape/scratch/hematoma	5	1	2		8
Bruise/contusion/dicoloration	2	1	1	1	5
Death	1				1
Emesis			1		1
Fracture	2	1			3
Laceration: with steristrips/glue	1				1
Laceration: with sutures/staples	2				2
No Injury/NA	3	3	3	6	15
Other				2	2
Pain, Specified	2				2
Respiratory Distress	1				1
Unconscious/Unresponsive			1		1
Totals	19	6	8	9	42

Act-21-Sexual Responsibility & Treatment Program at Torrance State Hospital

In July 2003, the Pennsylvania Legislature enacted Act 21 for adjudicated youth, aging out of the juvenile justice system who have a "mental abnormality" that renders them unable to control their violent sexual impulses. The Act mandates the state to provide mental health and sex-offense specific treatment to an identified population that had been adjudicated of certain sex crimes, received treatment in a juvenile program, yet remains a significant risk to sexually re-offend after reaching the age of 21, an age when oversight by the juvenile justice system typically ends. The Act requires the referral of such individuals who have committed these specific crimes to the Pennsylvania Sexual Offenders Assessment Board (SOAB) ninety days prior to their 20th birthday for purposes of determining if the individual has "serious difficulty in controlling sexually violent behavior." If so determined, a petition for a mental health hearing will be made for determination of civil commitment to the Sexual Responsibility and Treatment Program (SRTP) on the grounds of Torrance State Hospital. On July 1, 2006, the operation of this program transferred from an independent contractor to the Torrance State Hospital.

Table 8 - Cause of Incidents in the Sexual Responsibility and Treatment Program

Cause	TOR	Count
Accident-Injury	1	1
Aggression	2	2
Assault, Pt./Staff	1	1
Self-Injurious behavior	1	1
Totals	5	5

Table 9 - Effect of Incidents in the Sexual Responsibility and Treatment Program

Primary effect	TOR	Count
Abrasion/scrape/scratch/hematoma	2	2
Bruise/contusion/discoloration	1	1
No Injury/NA	2	2
Totals	5	5

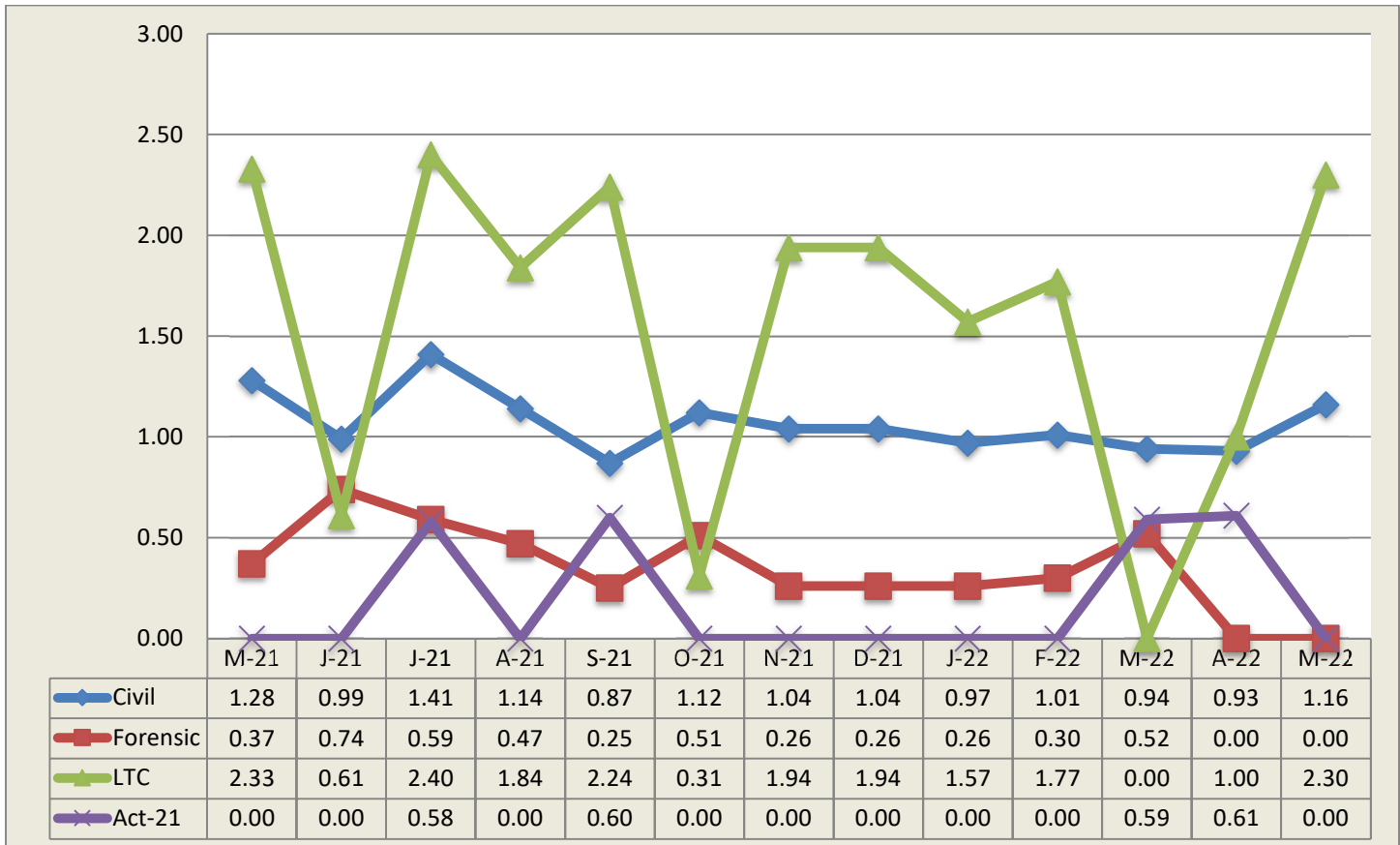
Falls

Falls within the state hospital risk management system are divided into two categories, type 1 and type 2, with the need for medical intervention or lack thereof defining the difference. The following data relates to falls, type 1 which are defined as an involuntary descent to a lower position, excluding seizures, that is witnessed or reported and requires medical intervention.

Table 10 - 13-Month Rate of Type 1 Falls Per 1,000 Days-of-Care

M/Year	Civil Hospital							Forensic			A21	LTC	Sys Avg
	Cl	Dan	Nor	Tor	War	Wer	Ttl	Nor	Tor	Total	A21	SMRC	
May-21	1.65	1.65	0.84	1.82	0.48	1.18	1.28	0.51	0.00	0.37	0.00	2.33	1.14
Jun-21	2.69	0.43	0.28	1.60	0.00	0.92	0.99	0.70	0.86	0.74	0.00	0.61	0.87
Jul-21	2.34	1.61	1.41	2.13	0.23	1.01	1.41	0.83	0.00	0.59	0.58	2.40	1.30
Aug-21	1.60	0.61	1.15	2.18	0.23	1.13	1.14	0.17	1.26	0.47	0.00	1.84	1.02
Sep-21	1.18	0.63	0.30	0.90	0.00	1.53	0.87	0.17	0.43	0.25	0.60	2.24	0.84
Oct-21	2.49	0.00	1.19	1.79	0.00	1.24	1.12	0.52	0.47	0.51	0.00	0.31	0.84
Nov-21	2.59	0.00	1.82	1.60	0.23	0.64	1.04	0.00	0.98	0.26	0.00	1.94	0.92
Dec-21	2.59	0.00	1.82	1.60	0.23	0.64	1.04	0.00	0.98	0.26	0.00	1.94	0.92
Jan-22	2.06	0.20	0.91	1.95	0.22	0.74	0.97	0.36	0.98	0.26	0.00	1.57	0.85
Feb-22	2.56	0.23	0.33	0.96	0.25	1.37	1.01	0.43	0.00	0.30	0.00	1.77	0.90
Mar-22	2.23	0.41	0.60	1.51	0.00	0.86	0.94	0.57	0.39	0.52	0.59	0.00	0.78
Apr-22	1.16	0.84	0.90	2.01	0.46	0.51	0.93	0.00	0.00	0.00	0.61	1.00	0.74
May-22	1.78	0.00	1.47	2.63	0.00	1.23	1.16	0.00	0.00	0.00	0.00	2.30	0.96

13-Month Trend of Type 1 Falls by Type of Care per 1,000 Days-of-Care



State Hospital Use of Seclusion

Civil and Forensic

Data on seclusion use for psychiatric reasons includes the civil and forensic populations and is reported for both monthly and yearly totals.

Table 11 - Hours of Seclusion Use, Monthly Totals for Past Year

No Use of Seclusion in PA State Hospital system since July 2013

Table 12 - Number of Seclusion Events, Monthly Totals for Past Year

No Use of Seclusion in PA State Hospital system since July 2013

State Hospital Use of Mechanical Restraint

Civil and Forensic

Data on mechanical restraint use for psychiatric reasons includes the forensic and civil populations and is reported for both monthly and yearly totals.

Table 13 - Total Hours of Mechanical Restraint Use by Hospital and Unit In Month

No use of Mechanical Restraint in PA State Hospital system since September 2015

Table 14 - Hours of Mechanical Restraint Use, Monthly Totals for Past Year

No use of Mechanical Restraint in PA State Hospital system since September 2015

Table 15 - Number of Mechanical Restraint Events, Monthly Totals for Past Year

No use of Mechanical Restraint in PA State Hospital system since September 2015

State Hospital Use of Physical Holds

Data on physical holds use for psychiatric reasons includes all level of care populations and is reported for both monthly and yearly totals. Physical hold events lasting less than 60 seconds are reflected as 0.00 hours.

Table 16 - Hours of Physical Holds (Restraint) Used by Hospital & Unit

ABV	WARD	Total	ABV	WARD	Total	ABV	WARD	Total
TOR	FB4	0.47	WAR	3NM	0.05	NOR	01C2	0.02
WAR	3IF	0.42	TOR	064	0.05	WER	37-4	0.02
WAR	3SW	0.30	DAN	312	0.05	NOR	10E1	0.01
NOR	01C1	0.20	TOR	FB3	0.03	WER	37-2	0.01
TOR	FC1	0.10	DAN	212	0.03	CLA	4	0.01
NOR	51C1	0.07	NOR	51A1	0.03	NOR	51A2	0.00
NOR	51B2	0.06	NOR	10E2	0.02	NOR	01A2	0.00
CLA	3	0.06						

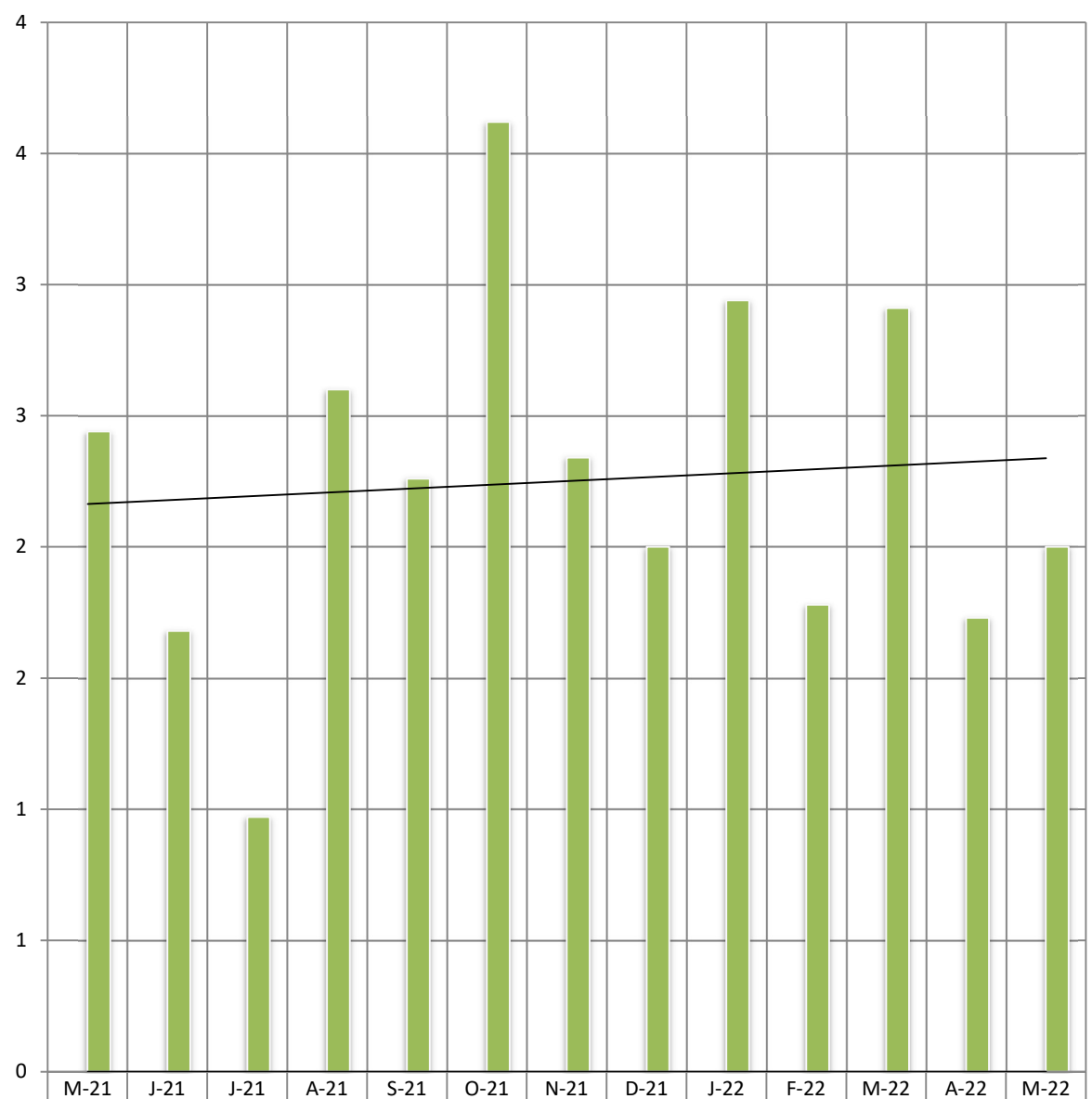
Table 17 - Hours of Physical Holds (Restraint) Use, Monthly Totals for Past Year

ABV	Total	Jun_21	Jul_21	Aug_21	Sep_21	Oct_21	Nov_21	Dec_21	Jan_22	Feb_22	Mar_22	Apr_22	May_22
CLA	6.29	0.00	1.67	0.00	0.80	0.83	1.05	0.66	1.02	0.00	0.00	0.06	0.21
DAN	1.53	0.07	0.12	0.22	0.27	0.20	0.24	0.20	0.02	0.01	0.04	0.08	0.07
NOR	8.95	0.26	0.14	0.63	0.74	1.54	0.22	1.00	1.59	0.78	1.11	0.52	0.42
TOR	7.07	0.45	0.62	1.32	0.33	0.20	0.73	0.55	0.43	0.18	1.18	0.42	0.65
WAR	10.56	1.55	0.15	0.47	1.42	0.70	1.23	0.58	0.84	0.52	1.78	0.57	0.77
WER	4.56	0.18	0.09	0.10	0.85	0.85	0.95	0.00	0.52	0.53	0.35	0.10	0.06
Total	38.96	2.50	2.77	2.74	4.41	4.32	4.42	2.98	4.42	2.02	4.46	1.74	2.19

Table 18 - Number of Physical Holds (Restraint) Events, Monthly Totals for Past Year

ABV	Total	Jun_21	Jul_21	Aug_21	Sep_21	Oct_21	Nov_21	Dec_21	Jan_22	Feb_22	Mar_22	Apr_22	May_22
CLA	24	0	6	0	1	4	2	3	3	0	0	2	3
DAN	49	3	5	5	7	6	6	3	2	1	2	4	5
NOR	293	22	11	20	32	17	18	35	37	21	20	34	26
TOR	73	6	11	11	6	2	5	4	4	3	8	5	8
WAR	153	21	6	13	12	19	14	7	9	8	16	12	16
WER	49	5	5	4	9	9	3	0	3	1	2	6	2
Total	641	57	44	53	67	57	48	52	58	34	48	63	60

Total Hours by Month



■ Mechanical Restraint	0.00	0.00	0.00	0.00	0.00	0.00	0.00	0.00	0.00	0.00	0.00	0.00	
■ Physical Restraint	2.44	1.68	0.97	2.6	2.26	3.62	2.34	2	2.94	1.78	2.91	1.73	2.00

■ Mechanical Restraint
 ■ Physical Restraint
 — Linear (Mechanical Restraint)
 — Linear (Physical Restraint)

Assaults

Assaults within the state hospital system are defined as any aggressive act by a patient, involving physical contact that may or may not result in injury. Assaults can be directed at a peer, staff or any other individual. The system was designed to require an incident report (form SI-815) on any patient involved in a physical altercation regardless of who may have started the assault. Therefore, every patient-to-patient altercation will result in at least two incident reports.

Table 19 - Patient-to-Patient Assaults by Unit, All Levels of Care

ABV	WARD	Cnt	ABV	WARD	Cnt	ABV	WARD	Cnt
DAN	312	16	DAN	210	6	CLA	3	4
WAR	3NM	15	WER	34-3	6	TOR	FC1	3
NOR	51C1	14	WAR	3IM	6	TOR	022	2
WER	35-2	14	DAN	310	6	TOR	FB3	2
WAR	2SW	13	DAN	211	6	NOR	01C2	2
NOR	51B2	12	NOR	10D2	6	NOR	51C2	2
DAN	212	12	WER	37-3	6	WER	34-4	2
TOR	014	11	NOR	10E2	6	WER	35-3	2
WER	35-4	11	NOR	51A1	6	CLA	6	2
NOR	01C1	10	CLA	4	4	CLA	5	2
NOR	51A2	10	NOR	01A2	4	NOR	10E1	2
WER	37-2	9	TOR	FC2	4	NOR	01A1	2
NOR	10D1	8	TOR	011	4	TOR	021	1
TOR	013	7	WER	37-1	4	TOR	012	1
WAR	3SW	7	WAR	2NM	4			

Table 20 - Rate of Patient-to-Patient Assaults Events with Patient Injury per 1,000 Days-of-Care

Pt.-to-Pt. Assault w/ any Injury	Civil							Forensic			S RTP
	Cla	Dan	Nor	Tor	War	Wer	Tot.	Nor	Tor	Tot.	S RTP
May-21	0.47	1.03	3.90	1.82	1.68	1.05	1.52	1.20	2.16	1.47	0.00
Jun-21	0.73	1.91	2.85	1.60	0.97	1.19	1.48	2.79	1.29	2.36	0.00
Jul-21	0.70	0.20	3.09	2.35	0.69	1.65	1.41	2.99	2.94	2.97	0.00
Aug-21	0.00	0.61	3.45	1.52	1.58	0.88	1.21	2.64	2.10	2.49	0.00
Sep-21	1.14	0.84	3.01	2.70	1.44	1.15	1.63	2.97	3.43	3.10	0.00
Oct-21	0.00	1.04	1.19	3.13	2.31	0.49	1.26	2.26	2.37	2.29	0.00
Nov-21	0.24	0.64	1.21	2.29	0.46	0.76	0.90	3.02	1.47	2.60	0.00
Dec-21	0.68	0.41	3.29	1.53	1.09	0.62	1.10	4.03	1.66	3.46	0.00
Jan-22	1.15	2.23	2.73	1.08	0.88	1.98	1.68	2.33	1.02	1.99	0.00
Feb-22	1.02	2.03	3.64	1.68	2.25	1.78	1.98	4.28	0.00	3.02	0.65
Mar-22	1.34	1.22	2.38	1.94	2.47	0.99	1.60	2.87	0.39	2.06	0.00
Apr-22	0.70	1.04	1.20	1.12	1.84	1.15	1.17	4.71	1.09	3.47	0.00
May-22	0.89	2.22	1.17	2.41	1.54	1.10	1.53	3.26	0.00	2.14	0.00

Table 21 - Patient-to-Staff Assault Events by Unit, All Levels of Care

ABV	WARD	Cnt
WAR	2SW	6
WER	37-2	5
WAR	3IF	5
NOR	51C1	4
WER	37-3	4
NOR	01C1	2
TOR	FB4	2
NOR	10D1	2

ABV	WARD	Cnt
NOR	10E2	2
NOR	51B2	2
CLA	4	1
DAN	211	1
DAN	310	1
NOR	01C2	1
CLA	3	1

ABV	WARD	Cnt
TOR	064	1
TOR	FB3	1
WAR	3NM	1
WER	34-3	1
WER	34-4	1
WER	35-2	1
TOR	014	1

Table 22 - Rate of Patient-to-Staff Assault Events with Injury to Staff per 1,000 Days-of-Care

Pt/Staff Assault w/ Staff Inj per 1K days	Civil							Forensic			SRTP
	Cla	Dan	Nor	Tor	War	Wer	Tot.	Nor	Tor	Tot.	SRTP
May-21	0.24	0.41	0.00	0.23	0.48	0.00	0.21	0.51	0.43	0.49	0.00
Jun-21	0.24	0.85	0.28	0.00	0.49	0.26	0.35	1.05	0.43	0.87	0.00
Jul-21	0.47	0.20	0.00	0.43	0.69	0.63	0.44	0.17	0.84	0.36	0.58
Aug-21	0.00	0.20	0.00	0.22	0.68	0.13	0.20	0.33	0.00	0.24	0.00
Sep-21	0.94	0.00	1.20	0.00	0.24	0.51	0.45	0.52	0.00	0.37	0.00
Oct-21	0.00	0.42	0.00	0.67	0.46	0.62	0.41	0.52	0.00	0.38	0.00
Nov-21	0.00	0.00	0.00	0.00	0.46	0.51	0.21	0.18	0.49	0.26	0.00
Dec-21	0.00	1.43	1.20	0.22	3.50	0.86	1.17	1.75	0.55	1.46	0.00
Jan-22	0.00	0.61	0.30	0.43	0.22	0.37	0.34	0.36	0.00	0.26	0.00
Feb-22	0.00	0.45	0.33	0.00	0.50	0.14	0.22	0.43	0.00	0.30	0.00
Mar-22	0.00	0.41	0.00	0.43	0.67	0.00	0.23	0.00	0.39	0.13	0.00
Apr-22	0.46	0.63	0.00	0.22	0.23	0.77	0.45	0.75	0.36	0.62	0.00
May-22	0.00	0.20	0.29	0.00	1.32	0.25	0.33	0.34	0.66	0.45	0.59

Table 23 - Risk Adjusted Safety Indicators

May-22	Civil							Forensic					
Month	Cl	Dan	Nor	Tor	War	Wer	C. Total	Nor	Tor	F. Total	LTC	S RTP	System
Patient Days	4482	4952	3409	4561	4547	8154	30105	5833	3048	8881	3040	1705	43731
Census	146	159	110	149	147	264	975	186	98	284	98	61	1418
Safety Indicators													
Type 1 Falls (count)	8	0	5	12	0	10	35	0	0	0	7	0	42
Num Per 1,000 Pt Days	1.78	0.00	1.47	2.63	0.00	1.23	1.16	0.00	0.00	0.00	2.30	0.00	0.96
Total Falls (count)	19	23	11	34	40	33	160	1	1	2	11	0	173
Num Per 1,000 Pt Days	4.24	4.64	3.23	7.45	8.80	4.05	5.31	0.17	0.33	0.23	3.62	0.00	3.96
PT:PT Assaults w/Injury(count)													
PT:PT Assaults w/Injury(count)	4	11	4	11	7	9	46	19	0	19	0	0	65
Num Per 1,000 Pt Days	0.89	2.22	1.17	2.41	1.54	1.10	1.53	3.26	0.00	2.14	0.00	0.00	1.49
Total PT:PT Assault Events (count)	12	46	18	26	45	54	201	66	9	75	0	0	276
Num Per 1,000 Pt Days	2.68	9.29	5.28	5.70	9.90	6.62	6.68	11.31	2.95	8.44	0.00	0.00	6.31
PT:Staff Assaults w/Injury(count)													
PT:Staff Assaults w/Injury(count)	0	1	1	0	6	2	10	2	2	4	0	1	15
Num Per 1,000 Pt Days	0.00	0.20	0.29	0.00	1.32	0.25	0.33	0.34	0.66	0.45	0.00	0.59	0.34
Total PT:Staff Assault Events (count)	2	2	3	1	12	12	32	10	3	13	0	1	46
Num Per 1,000 Pt Days	0.45	0.40	0.88	0.22	2.64	1.47	1.06	1.71	0.98	1.46	0.00	0.59	1.05
SIB Events (count)													
SIB Events (count)	8	36	17	23	23	26	133	4	8	12	0	1	146
Num Per 1,000 Pt Days	1.78	7.27	4.99	5.04	5.06	3.19	4.42	0.69	2.62	1.35	0.00	0.59	3.34
Total Physical Restraint Hours													
Total Physical Restraint Hours	0.06	0.07	0.22	0	0.77	0.03	1.15	0.20	0.6	0.80		0.05	2.00
Num Per 1,000 Pt Days	0.01	0.01	0.07	0.00	0.17	0.00	0.04	0.03	0.20	0.09		0.03	0.05
Medication Measures													
Benzodiazepines	91	79	44	41	73	85	413	11	4	15		5	433
Percentage of Census	0.62	0.50	0.40	0.28	0.50	0.32	0.42	0.06	0.04	0.05		0.08	0.31
Multiple Atypicals													
Multiple Atypicals	27	60	7	37	57	73	261	14	13	27		0	288
Percentage of Census	0.18	0.38	0.06	0.25	0.39	0.28	0.27	0.08	0.13	0.10		0.00	0.20
Typical- Atypical													
Typical- Atypical	33	61	45	68	45	119	371	43	31	74		0	445
Percentage of Census	0.23	0.38	0.41	0.46	0.31	0.45	0.38	0.23	0.32	0.26		0.00	0.31

Wellness Indicators

The National Association of State Mental Health Program Directors (NASMHPD) issued a report in October 2006 about mortality and morbidity in people with serious mental illness (SMI). According to Mental Health America's *Survey of People with Schizophrenia and Providers* (www.mentalhealthamerica.net), the NASMHPD report revealed that people with SMI die on average 25 years earlier than the general population. The major natural causes of death for people with SMI are heart disease, diabetes, respiratory disease and infectious disease. Many of the risk factors for these diseases are modifiable.

Table 24 - Reasons for Hospitalizations as the Result of an Incident, All Levels of Care

The Risk Management System requires that an incident report form be completed anytime a person is transported from a state hospital to an acute care hospital. This includes if the person was only seen in the emergency room, received diagnostic tests and/or was actually admitted. It does **not** include hospitalizations for a preplanned procedure, test or surgery.

Cause	CLA	DAN	NOR	TOR	WAR	WER	Count
Aggression						1	1
Assault, Pt./Pt		2				1	3
Assault, Pt./Staff				1			1
Change in Medical Status-Transferred	8	6	3	6	6	13	42
Fall Type 2-No treatment needed					1	1	2
Indeterminate/Unconfirmed Cause of Injury				1		1	2
Other			1	2			3
Seizure					1	1	2
Self-Injurious behavior			1	2	3	4	10
Unsubstantiated Patient Abuse						1	1
Totals	8	8	5	12	11	23	67

Medication Measures

Beginning in September 2008 the OMHSAS Bureau of Community and Hospital Operations identified the following three medication measures for inclusion in this monthly report. The table information is compiled from the QS1 pharmacy software and reflects the unique count of the number of people served at each hospital on the last day of the month for each measure.

Table 25 - Benzodiazepines

Measure Definition: *Benzodiazepines refers to the number of unique patients served at each hospital, by level-of-care, who have an active, straight order for any benzodiazepine medication on the last day of each month.*

BZD M/Y								Forensic			S RTP	Sys
	Cl a	D an	N or	T or	W ar	W er	Total	N or	T or	C nt	T or	Total
Jul-21	88	79	40	30	84	78	399	4	7	11	7	417
Oct-21	89	77	35	35	77	79	392	7	5	12	11	415
22-Jan	87	78	36	36	74	76	387	13	7	20	5	412
22-May	91	79	44	41	73	85	413	11	4	15	5	433

Table 26 - Multiple Atypicals

Measure Definition: *Multiple Atypicals refers to the number of unique patients served at each hospital, by level-of-care, who have an active, straight order for two or more atypical antipsychotic medications on the last day of each month.*

Multiple Atypicals M/Y								Forensic			S RTP	Sys
	Cl a	D an	N or	T or	W ar	W er	Total	N or	T or	C nt	T or	Total
Jul-21	28	51	10	41	59	78	267	7	11	18	0	285
Oct-21	31	48	6	45	58	77	265	17	10	27	0	292
22-Jan	24	54	7	40	64	78	267	13	12	25	0	292
22-May	27	60	7	37	57	73	261	14	13	27	0	288

Table 27 - Typical-Atypical

Measure Definition: *Typical-Atypicals refers to the number of unique patients served at each hospital, by level-of-care, who have an active, straight order for a typical and an atypical antipsychotic medication on the last day of each month.*

Typical - Atypical M/Y								Forensic			S RTP	Sys
	Cl a	D an	N or	T or	W ar	W er	Total	N or	T or	C nt	T or	Total
Jul-21	42	57	45	68	31	121	364	58	40	98	0	404
Oct-21	42	58	43	68	34	117	362	47	32	79	0	441
22-Jan	41	63	37	65	38	114	358	51	22	73	0	431
22-May	33	61	45	68	45	119	371	43	31	74	0	445

Table 28 - STAT Medication Usage – Civil

Measure Definition: STAT medication are counted as psychiatric medications that have been administered. If two STAT medications are administered, it is counted as one event. Each STAT medication event is documented by “Route of Administration” and “Requested by”. This measure includes all levels of care.

CLARKS SUMMIT (FY 2021-22)							
Month	Total Number of STATs	Route of Admin			Requested by:		
		PO	IM	PEG Tube:	Indv	MD/DO	RN
May-22	81	59	22	0	37	41	3

DANVILLE (FY 2021-22)							
Month	Total Number of STATs	Route of Admin			Requested by:		
		PO	IM	Peg Tube:	Indv	MD/OD	RN
May-22	181	15	166	0	49	14	103

NORRISTOWN - CIVIL (FY 2021-22)							
Month	Total Number of STATs	Route of Admin			Requested by:		
		PO	IM	Peg Tube:	Indv	MD/DO	RN
May-22	91	30	61	0	0	2	89

TORRANCE - CIVIL (FY 2021-22)							
Month	Total Number of STATs	Route of Admin			Requested by:		
		PO	IM	Peg Tube:	Indv	MD/DO	RN
May-22	69	26	42	1	14	14	41

WARREN (FY 2021-22)							
Month	Total Number of STATs	Route of Admin			Requested by:		
		PO	IM	Peg Tube	Indv	MD/DO	RN
May-22	85	39	44	2	21	33	31

WERNERSVILLE (FY 2021-22)							
Month	Total Number of STATs	Route of Admin			Requested by:		
		PO	IM	Peg Tube:	Indv	MD/DO	RN
May-22	90	59	31	0	40	16	34

Table 29 - STAT Medication Usage – Forensic

NORRISTOWN - FORENSIC (FY 2021-22)							
Month	Total Number of STATs	Route of Admin			Requested by:		
		PO	IM	Peg Tube/othe	Indv	MD/DO	RN
May-22	151	47	104	0	8	12	131

TORRANCE - FORENSIC (FY 2021-22)							
Month	Total Number of STATs	Route of Admin			Requested by:		
		PO	IM	Peg Tube:	Indv	MD/DO	RN
May-22	57	16	41	0	16	15	26

Table 30 - STAT Medication Usage – ACT 21 (SRTP)

TORRANCE - ACT 21 (FY 2021-22)							
Month	Total Number of STATs	Route of Admin			Requested by:		
		PO	IM	Peg Tube:	Indv	MD/DO	RN
May-22	5	5	0	0	5	0	0