



pennsylvania
DEPARTMENT OF HUMAN SERVICES

Monthly Data Report

March 2024

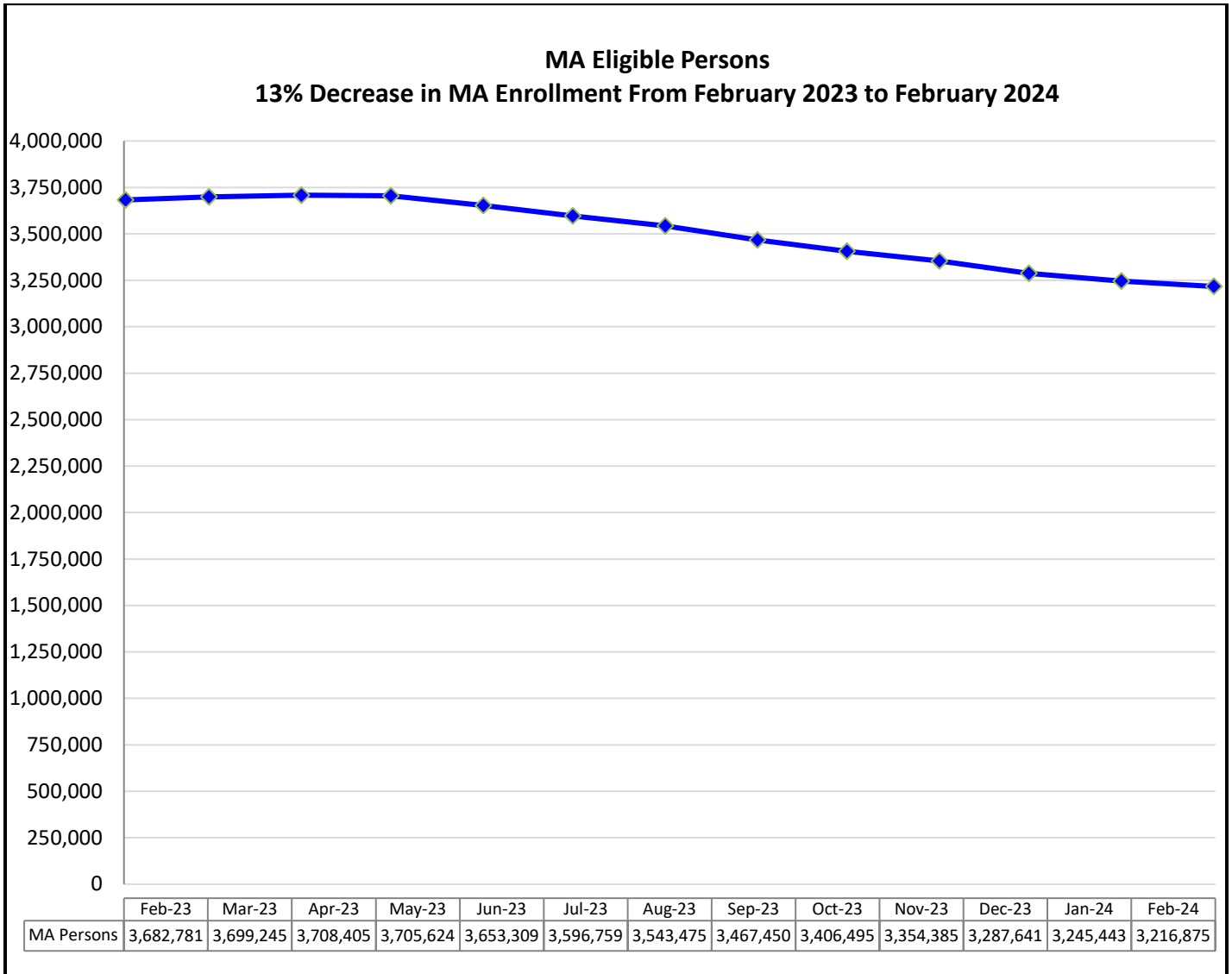
Contact David Chu (dchu@pa.gov) for questions on report

TABLE OF CONTENTS

CTRL+Click on one of the major headings below will link you to that section.

MEDICAL ASSISTANCE AND OTHER HEALTH CARE SERVICES.....	2
MA Eligible Persons.....	2
MA Children and CHIP.....	3
State Hospital Admissions/Census.....	4
BENEFIT ASSISTANCE PROGRAMS FOR CHILDREN AND FAMILIES.....	5
TANF Individuals.....	5
Number and Percent: Non-disabled TANF Adults Working.....	5
Number and Percent: Non-disabled TANF Adults Working/Training 20 or More Hours/Week.....	5
TANF Workforce Participation Rates.....	6
TANF Budgets Leaving for Employment.....	7
Individuals on TANF by Length of Time.....	8
SNAP Eligible Persons.....	9
Non-disabled SNAP Adults Working.....	10
SSI Adults and Children.....	11
Child Support Measures.....	11
CHILD WELFARE SERVICES.....	12
Monthly YDC Admissions.....	12
CHILD CARE AND EARLY LEARNING SERVICES.....	12
Child Care Subsidies-Enrollment-Waiting List.....	12
Regulated Child Care Usage.....	12
Subsidized Child Care: Regulated vs. Unregulated Settings.....	13
Children in STARS 3 or 4.....	14
ITF Waiver and EI: Enrollment.....	14
LONG TERM SUPPORTS FOR PERSONS WITH DISABILITIES AND OLDER PENNSYLVANIANS	15
Waiver Enrollments (OLTL):	
Act 150.....	15
OBRA.....	15
LIFE.....	16
Community Health Choices.....	16
Wavier Enrollments (ODP):	
Consolidated and Adult Autism.....	17
P/FDS and Community Living.....	18
Community Living Waiver.....	18
Intermediate Care Facilities: Enrollments.....	19
OTHER METRICS.....	19

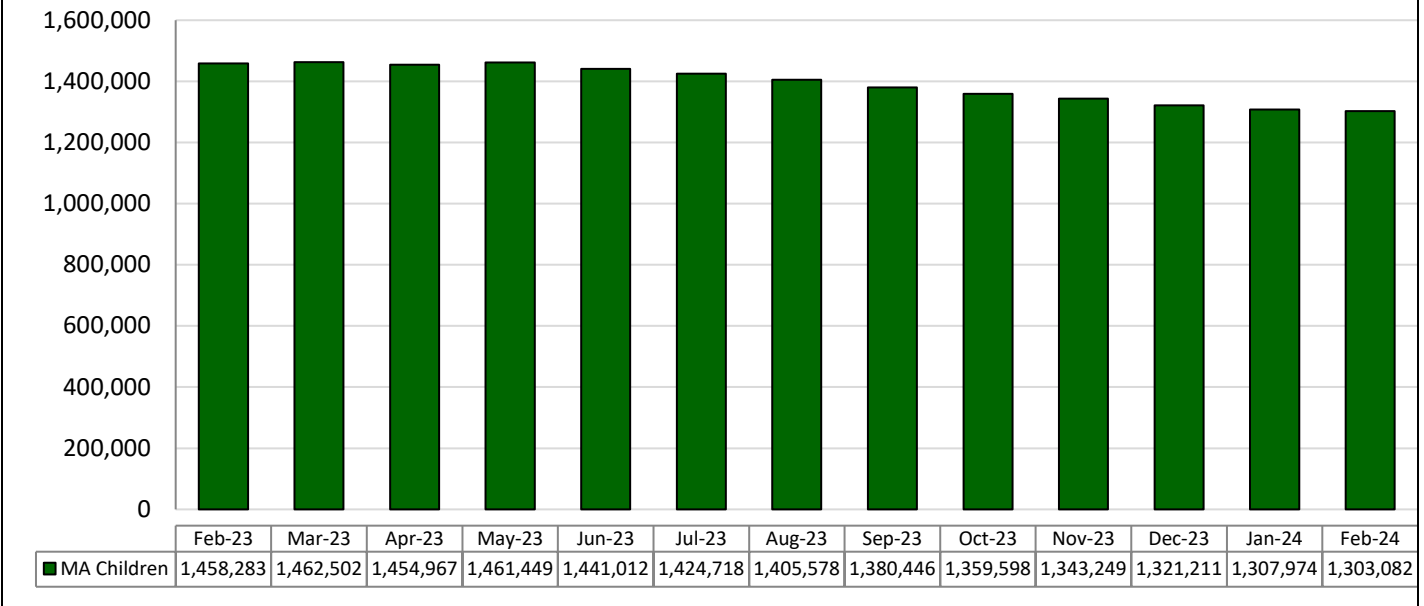
MEDICAL ASSISTANCE AND OTHER HEALTH CARE SERVICES



Data Source: DHS ListServ

NOTE: MA numbers now reflect data pulled on the second Tuesday of the month after the reported month. Previous months are not updated to show retroactive eligibility.

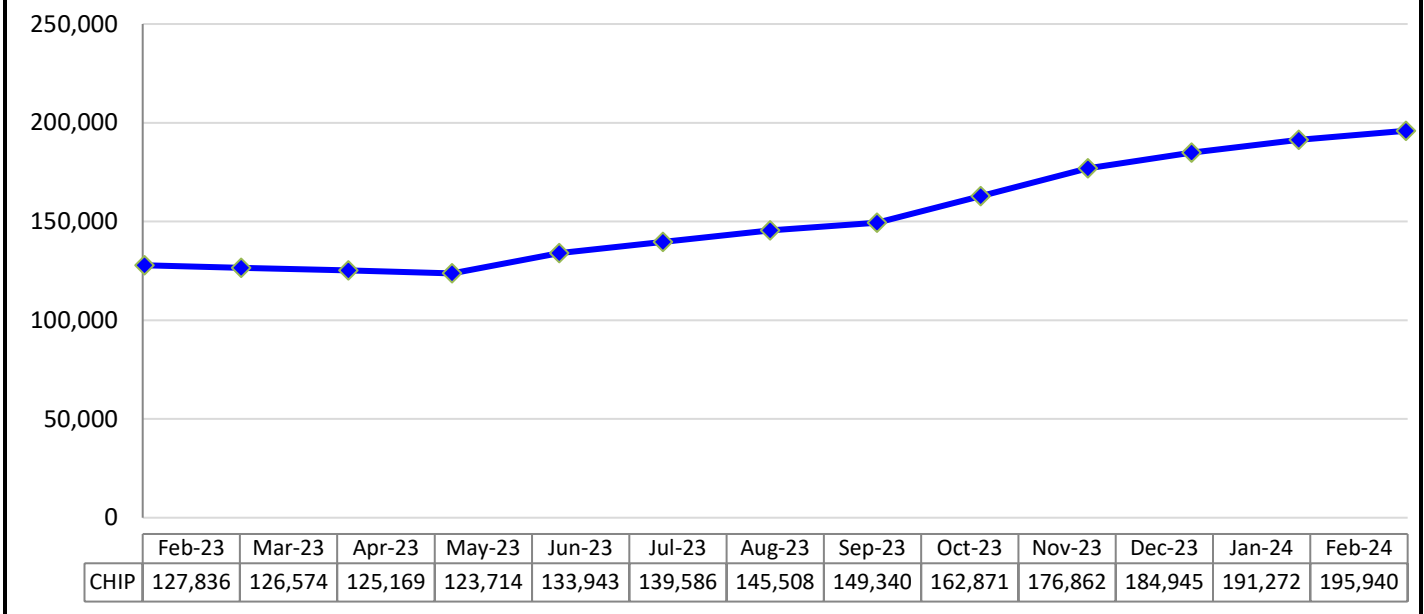
MA Children Preliminary Estimates ("children" can include persons up to 21 years old)



Data Source: DHS Data Enterprise Warehouse

Note: Children are those recipients under the age of 21. (EC (eligible child) is no longer used for determining MA children).

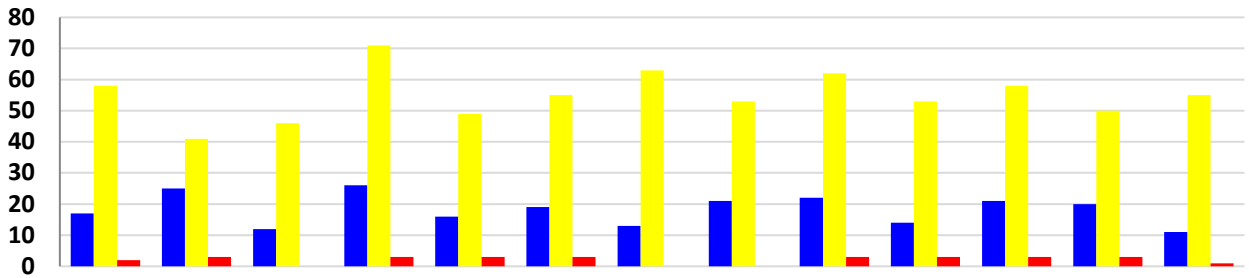
Children's Health Insurance Program (CHIP) Eligibility* 53% Increase in CHIP Enrollment From February 2023 to February 2024



Data Source: DHS Data Enterprise Warehouse

*Individuals have been deemed eligible for CHIP. They are not enrolled until they have enrolled into a Managed Care Organization (MCO)

State Hospital Admissions
13% Decrease in State Hospital Admissions from
December 2022 to December 2023



	Dec-22	Jan-23	Feb-23	Mar-23	Apr-23	May-23	Jun-23	Jul-23	Aug-23	Sep-23	Oct-23	Nov-23	Dec-23
Civil	17	25	12	26	16	19	13	21	22	14	21	20	11
Forensic	58	41	46	71	49	55	63	53	62	53	58	50	55
Long Term Care	<11	<11	0	<11	<11	<11	0	0	<11	<11	<11	<11	<11

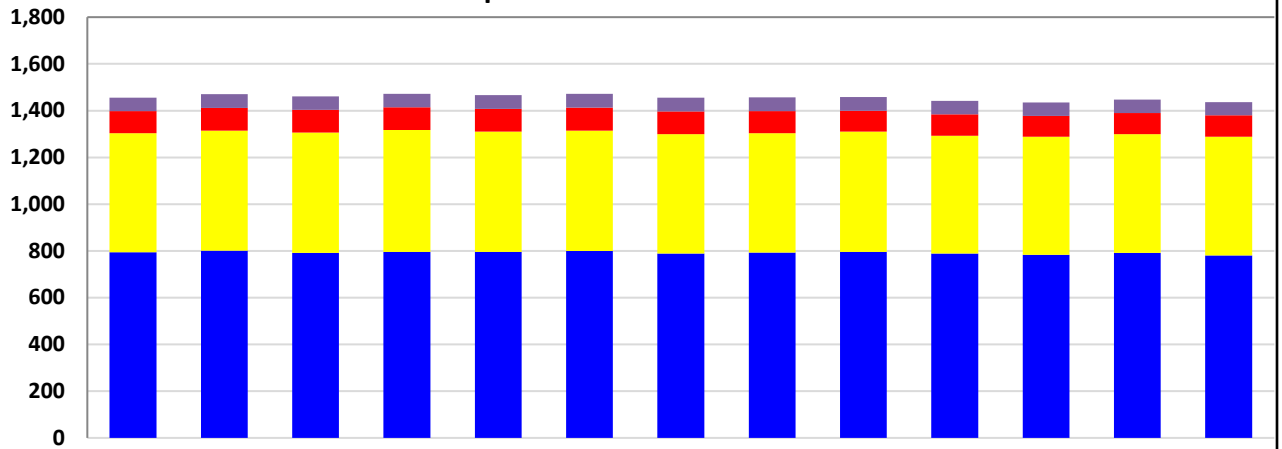
Data Source: Patient Census Information System

Civil: Unduplicated count of civil admissions of patients during the reporting month to: Clarks Summit State Hospital, Danville State Hospital, Norristown State Hospital, Torrance State Hospital, Warren State Hospital and Wernersville State Hospital.

Forensic: Unduplicated count of forensic admissions of patients during the reporting month to: Norristown State Hospital and Torrance State Hospital forensic units.

Long Term Care: Unduplicated count of admissions of patients during the reporting period to: South Mountain Restoration Center.

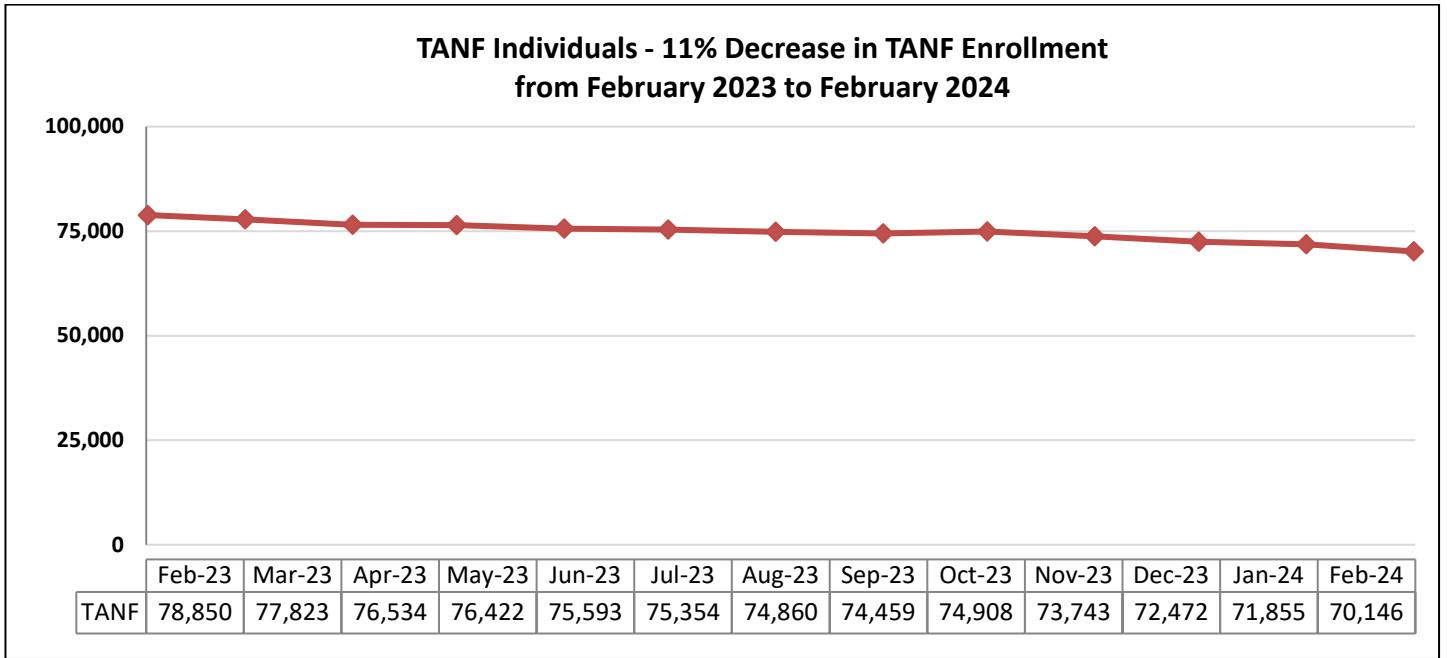
State Hospitals Census
1.4% Decrease in State Hospital Census from December 2022 - December 2023



	Dec-22	Jan-23	Feb-23	Mar-23	Apr-23	May-23	Jun-23	Jul-23	Aug-23	Sep-23	Oct-23	Nov-23	Dec-23
Act 21	58	58	58	58	58	59	59	59	58	58	57	57	56
Long Term Care	95	97	96	97	97	98	98	94	90	91	90	91	91
Forensic	509	514	515	521	515	515	510	511	515	504	504	508	508
Civil	794	801	792	796	796	800	789	793	795	789	784	791	781

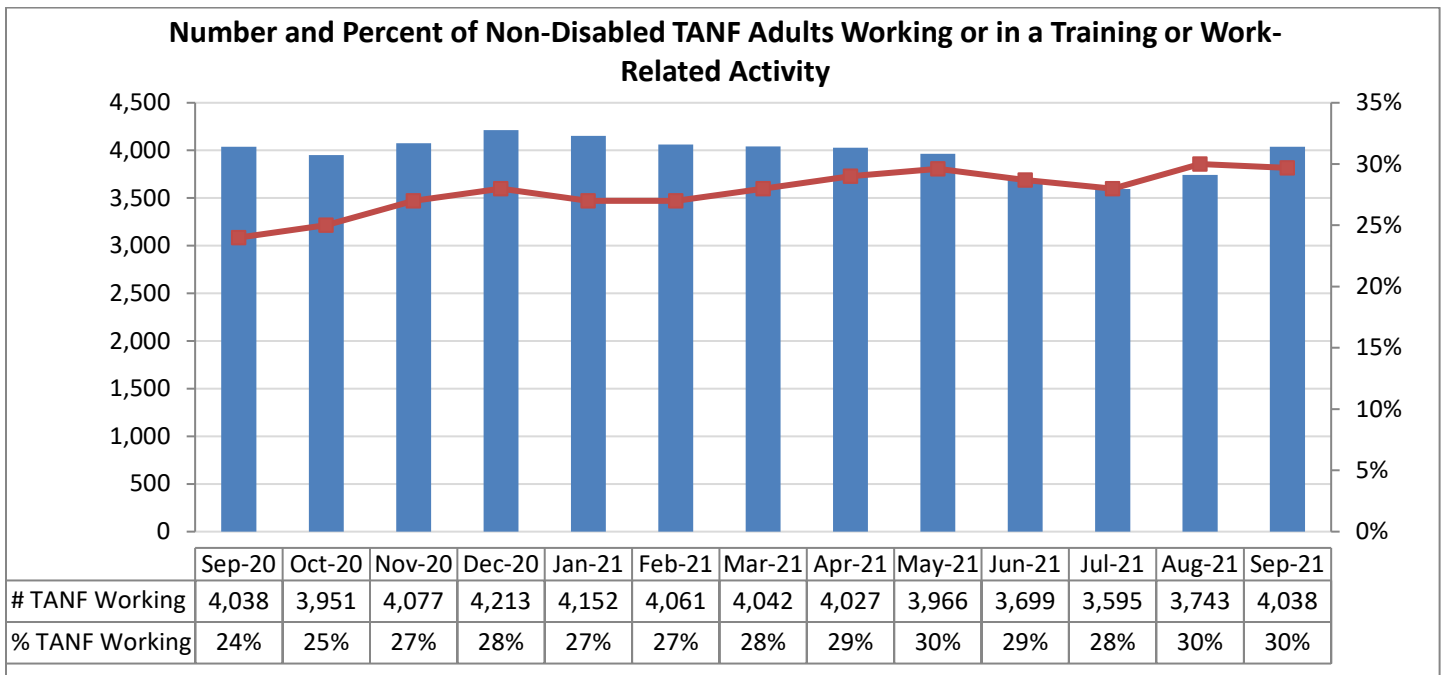
Data Source: Patient Census Information System

BENEFIT ASSISTANCE PROGRAMS FOR CHILDREN AND FAMILIES



Data Source: DHS ListServ/EDW

NOTE: TANF numbers now reflect data pulled on the second Tuesday of the month after the reported month.

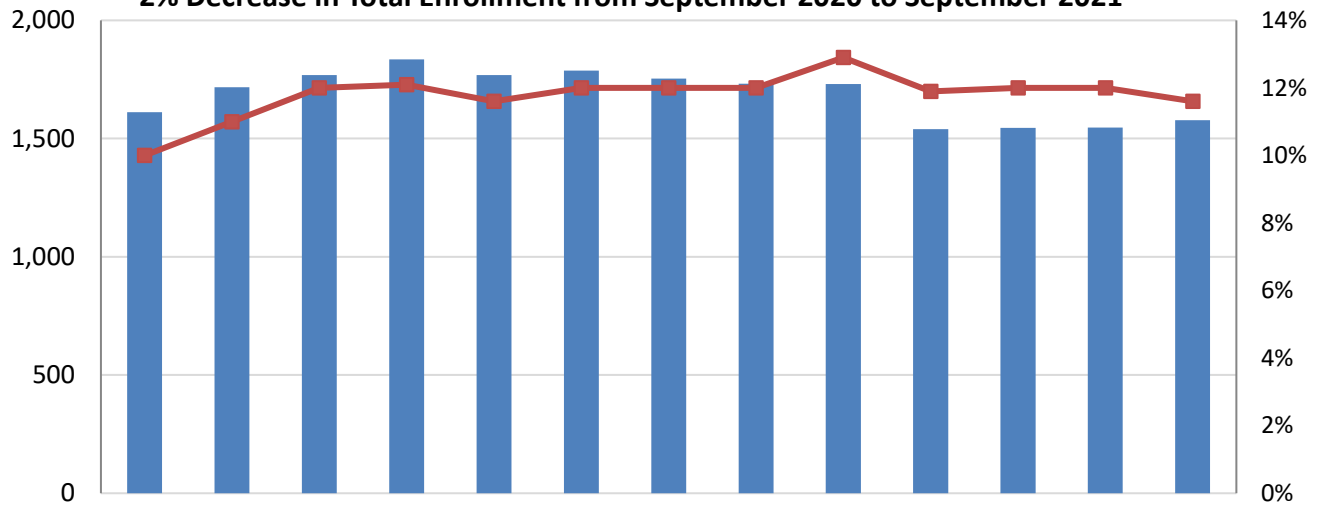


Data Source: AIS32W Report

*Data has been updated to count only those with open cases

*February 2020 data missing due to system update.

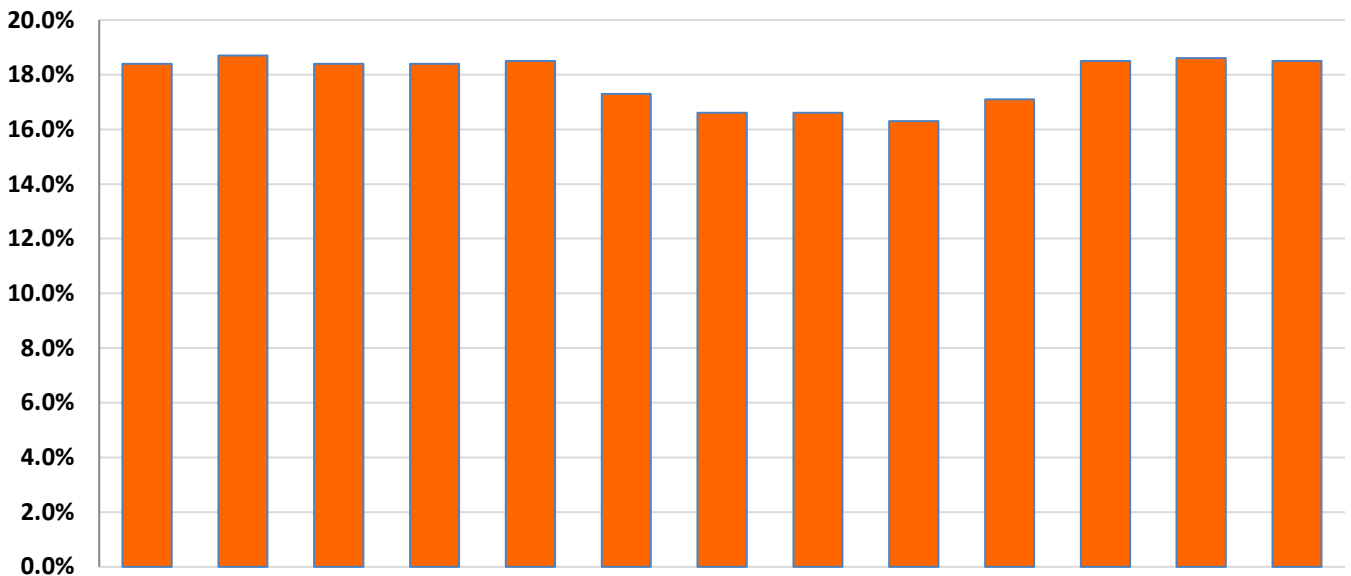
**Number of Non-disabled TANF Adults Working or in a Training Activity or Work-related Activity 20 Hours or More per Week -
2% Decrease in Total Enrollment from September 2020 to September 2021**



	Sep-20	Oct-20	Nov-20	Dec-20	Jan-21	Feb-21	Mar-21	Apr-21	May-21	Jun-21	Jul-21	Aug-21	Sep-21
# 20 Hrs/Wk	1,612	1,717	1,768	1,835	1,769	1,788	1,754	1,732	1,731	1,540	1,545	1,547	1,578
% 20Hrs/Wk	10%	11%	12%	12%	12%	12%	12%	12%	13%	12%	12%	12%	12%

Data Source: AIS32W Report

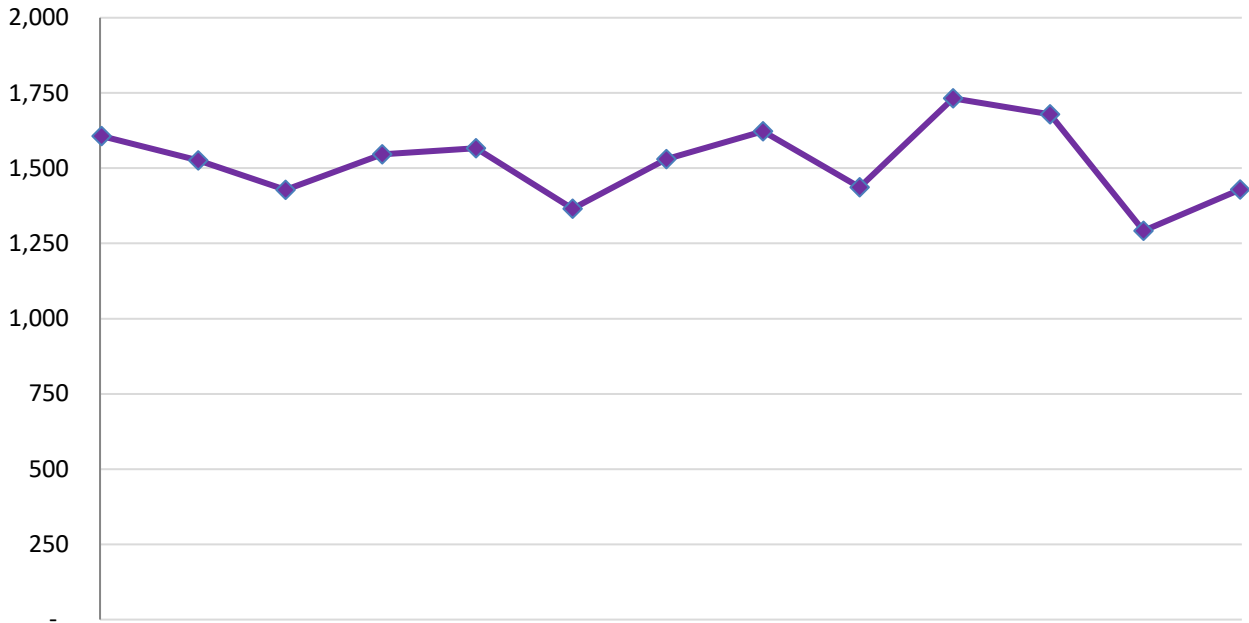
Pennsylvania Estimated TANF Workforce Participation Rate



	Dec-22	Jan-23	Feb-23	Mar-23	Apr-23	May-23	Jun-23	Jul-23	Aug-23	Sep-23	Oct-23	Nov-23	Dec-23
TANF WPR	18.4%	18.7%	18.4%	18.4%	18.5%	17.3%	16.6%	16.6%	16.3%	17.1%	18.5%	18.6%	18.5%

Data Source: TNF22 Report

**TANF Individuals that Obtain Employment
11% Decrease from January 2023 to January 2024**

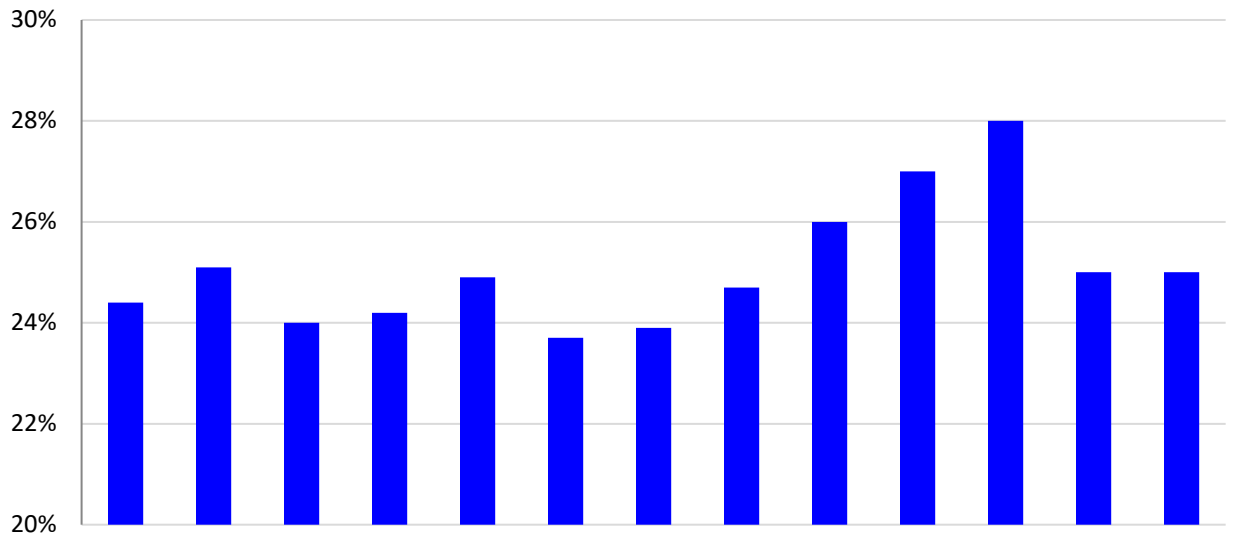


	Jan-23	Feb-23	Mar-23	Apr-23	May-23	Jun-23	Jul-23	Aug-23	Sep-23	Oct-23	Nov-23	Dec-23	Jan-24
TANF Employment	1,607	1,526	1,428	1,546	1,566	1,365	1,530	1,623	1,437	1,732	1,679	1,292	1,429

DHS Data Enterprise Warehouse

A budget is one or more related or unrelated individuals who occupy a common residence or would occupy a common residence if they were not homeless, and whose needs are considered together in determining eligibility for assistance are considered together in determining eligibility for assistance under one category of assistance.

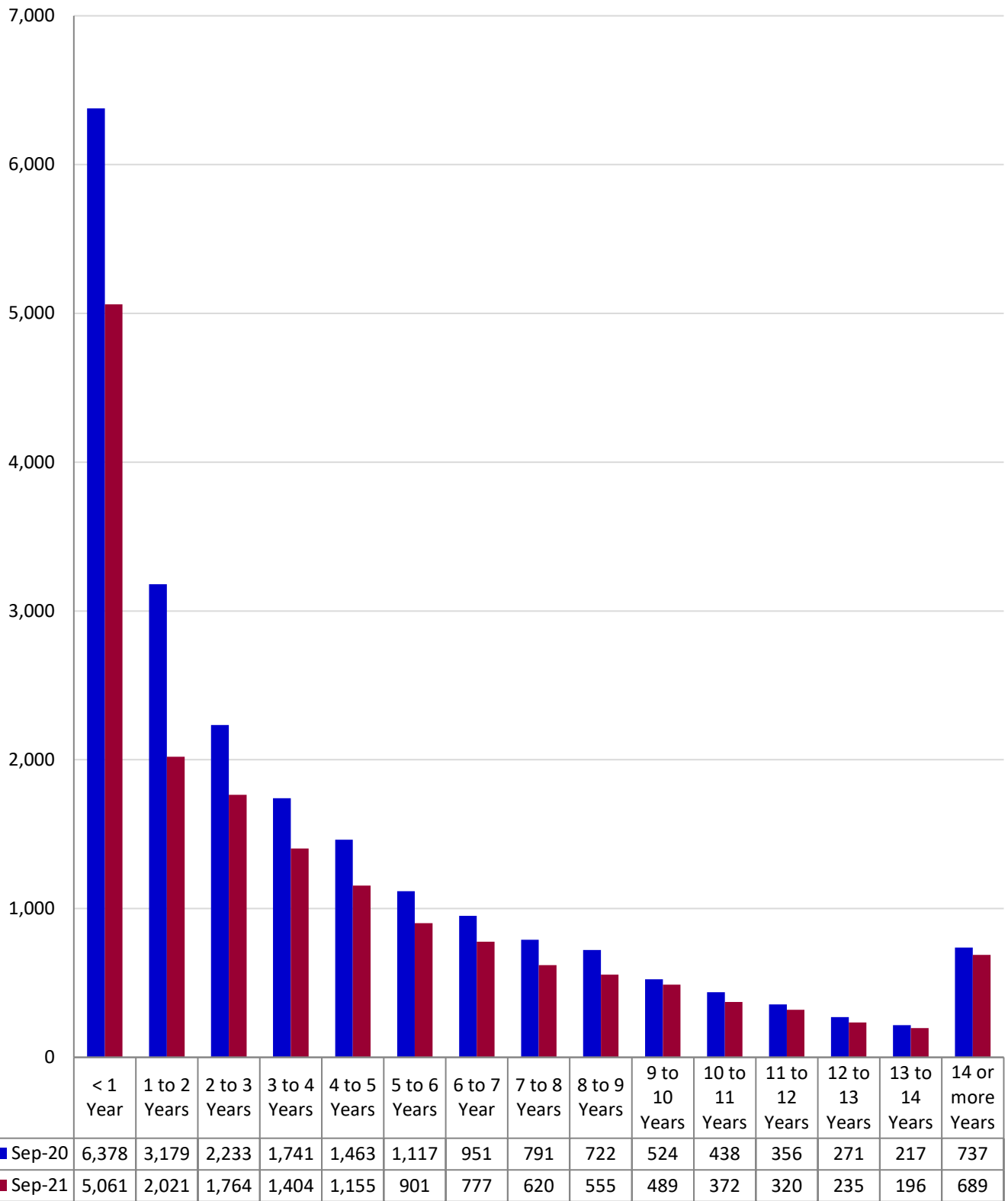
TANF Budgets Leaving for Employment as Percent of All Budgets that Left TANF



	Feb-23	Mar-23	Apr-23	May-23	Jun-23	Jul-23	Aug-23	Sep-23	Oct-23	Nov-23	Dec-23	Jan-24	Feb-24
TANF Employment	24%	25%	24%	24%	25%	24%	24%	25%	26%	27%	28%	25%	25%

DHS Data Enterprise Warehouse

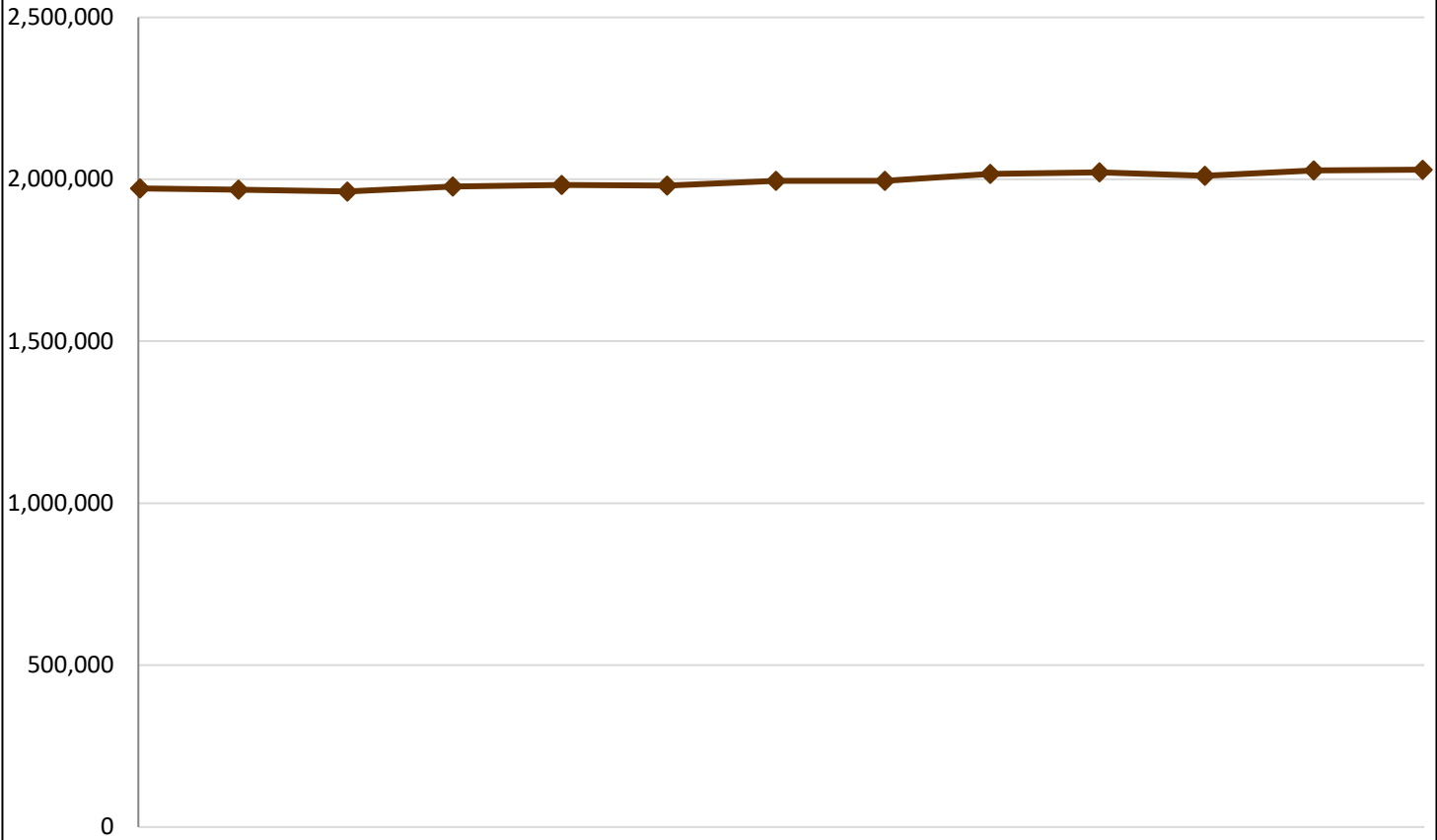
Adults on TANF by Length of Time



Data Source: AIS32W File

Note: Total time on TANF is cumulative, not subsequent (i.e., as a person moves on and off TANF, each time they are on will add to their total), and also includes time spent on TANF as a child.

SNAP Eligible Persons
3% Increase in SNAP Enrollment from February 2023 to February 2024

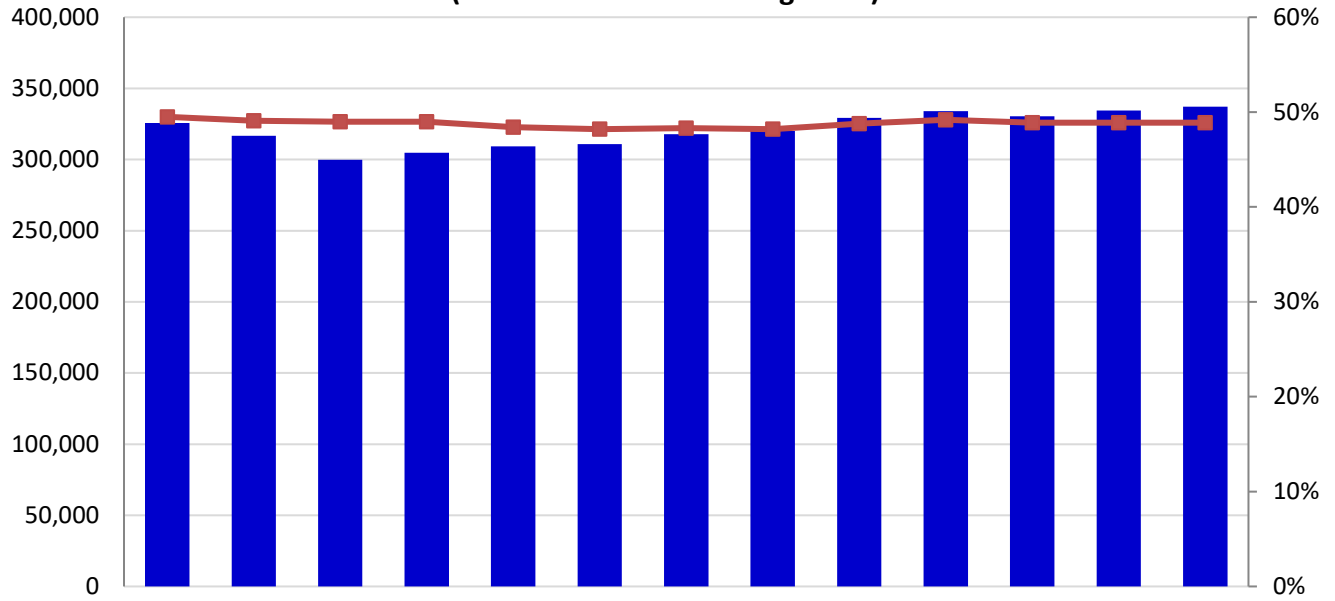


	Feb-23	Mar-23	Apr-23	May-23	Jun-23	Jul-23	Aug-23	Sep-23	Oct-23	Nov-23	Dec-23	Jan-24	Feb-24
SNAP	1,971,952	1,968,141	1,962,483	1,977,625	1,982,872	1,980,485	1,994,746	1,995,446	2,016,298	2,021,657	2,010,363	2,027,407	2,029,738

Data Source: DHS ListServ/EDW

NOTE: SNAP numbers now reflect data pulled on the second Tuesday of the month after the reported month.

Number and Percent of Non-disabled SNAP Adults Working (Excludes Those Receiving TANF)*

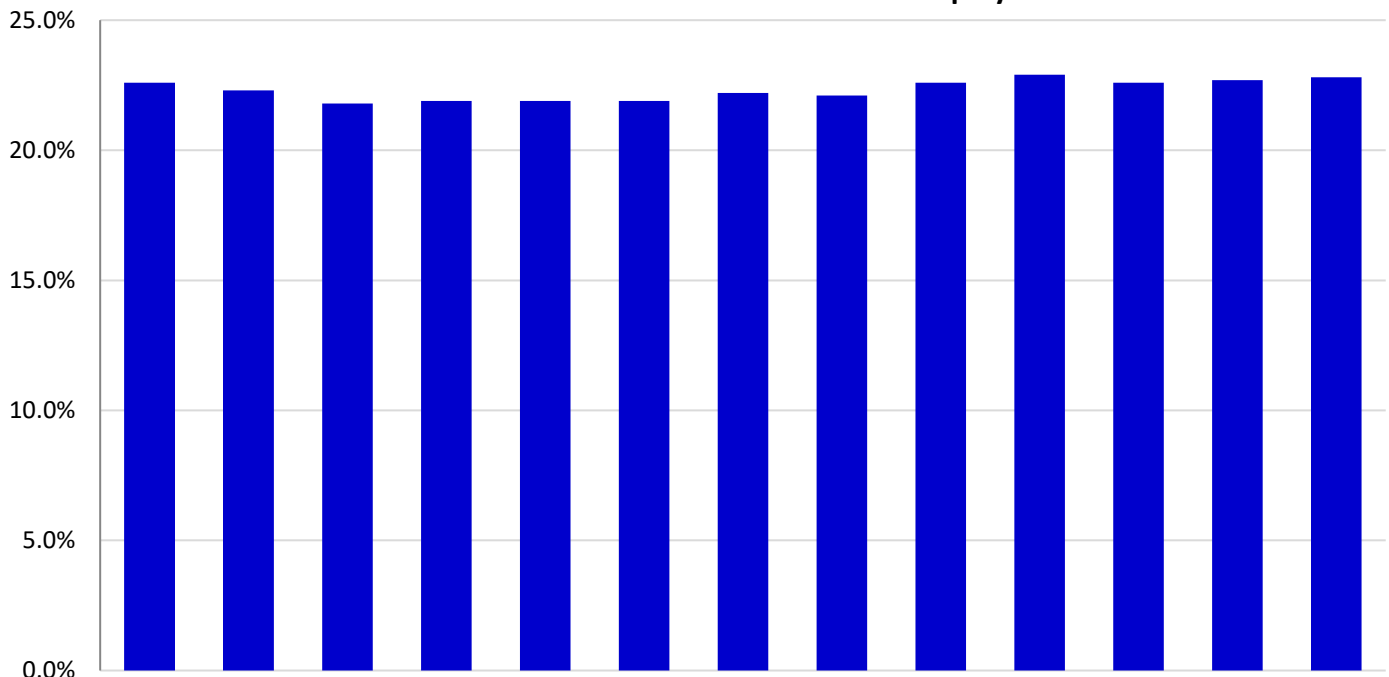


	Feb-23	Mar-23	Apr-23	May-23	Jun-23	Jul-23	Aug-23	Sep-23	Oct-23	Nov-23	Dec-23	Jan-24	Feb-24
# SNAP Working	325,672	316,596	299,847	304,724	309,319	310,733	317,800	320,109	329,159	334,054	330,355	334,481	337,150
% SNAP Working	50%	49%	49%	49%	48%	48%	48%	48%	49%	49%	49%	49%	49%

*Beginning in Jan 2018, SNAP Adults working includes non-elderly only.

Data Source: DHS Enterprise Data Warehouse

Percent of Non-disabled SNAP Adults with Full-time Employment*

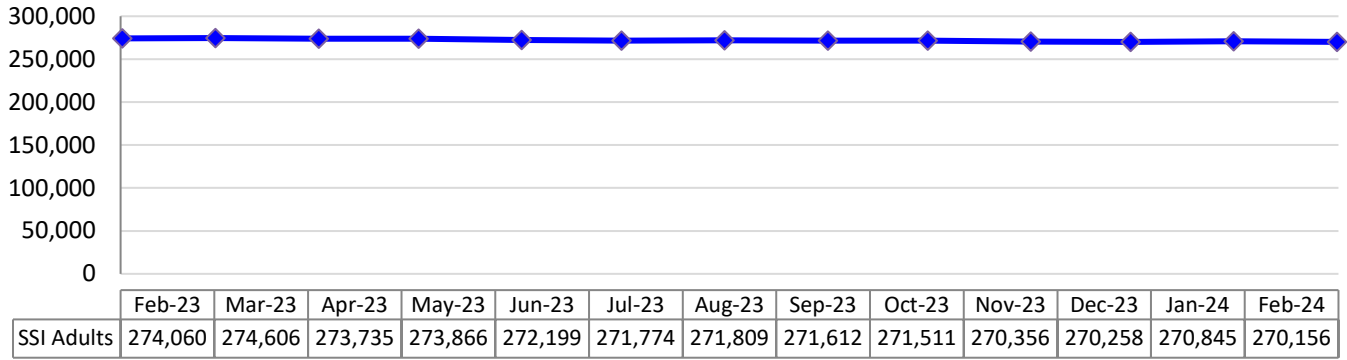


	Feb-23	Mar-23	Apr-23	May-23	Jun-23	Jul-23	Aug-23	Sep-23	Oct-23	Nov-23	Dec-23	Jan-24	Feb-24
% SNAP Working	22.6%	22.3%	21.8%	21.9%	21.9%	21.9%	22.2%	22.1%	22.6%	22.9%	22.6%	22.7%	22.8%

*Full-time status according to CIS Employment Status Code

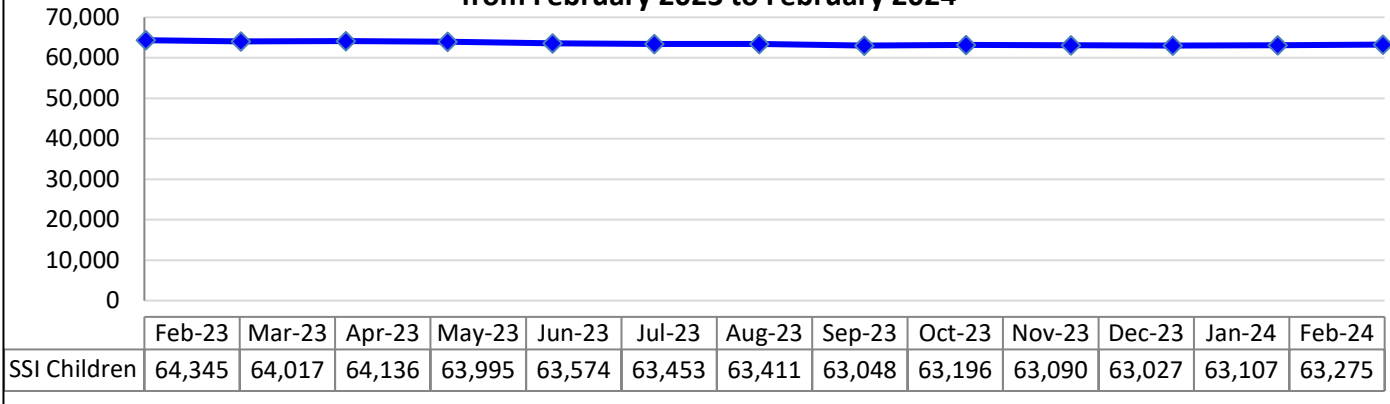
Data Source: DHS Enterprise Data Warehouse

**SSI Adults -- 1.4% Decrease in Total Adult SSI Enrollment
from February 2023 to February 2024**



Data Source: DHS Enterprise Data Warehouse

**SSI Children -- 1.7% Decrease in Total Child SSI Enrollment
from February 2023 to February 2024**



Data Source: DHS Enterprise Data Warehouse

Child Support Measures

Child Support	Federal Target	Pennsylvania Rate												
		Feb 2023	Mar 2023	Apr 2023	May 2023	Jun 2023	Jul 2023	Aug 2023	Sept 2023	Oct 2023	Nov 2023	Dec 2023	Jan 2024	Feb 2024
Child Support - Cases with Paternity Establishments**	80%	99%	101%	102%	105%	106%	108%	109%	110%	95%	96%	97%	98%	99%
Child Support - Current Supports Collected	80%	82%	82%	82%	82%	82%	82%	82%	82%	83%	83%	83%	83%	82%
Child Support - Percent of Cases Paying Arrears	80%	70%	76%	77%	80%	81%	82%	83%	83%	49%	57%	65%	70%	72%
Cases with Orders	80%	90%	90%	91%	92%	90%	91%	92%	92%	91%	91%	91%	92%	92%
Cost Effectiveness (FFY)	\$5.00	FFY 2019-20: \$4.49			FFY 2020-21: \$5.13			FFY 2021-22: \$4.80			FFY 2022-23: \$4.31		FFY 2023-24: \$3.99	

*Drop from September to October due to starting of new Federal Fiscal Year (compare with previous year) Data Source: OCSE Reports

CHILD WELFARE SERVICES

Category: YDC/YFC's	Current	Average
Monthly Admissions	25 (March 2024)	Rolling Year Average 33 (Apr 2024 – Mar 2024)
Level of Improvement in Life Skills from Intake to Discharge for all YDC/YFC participants completing program	11% (March 2024)	Rolling Year Average 10% (Apr 2024 – Mar 2024)

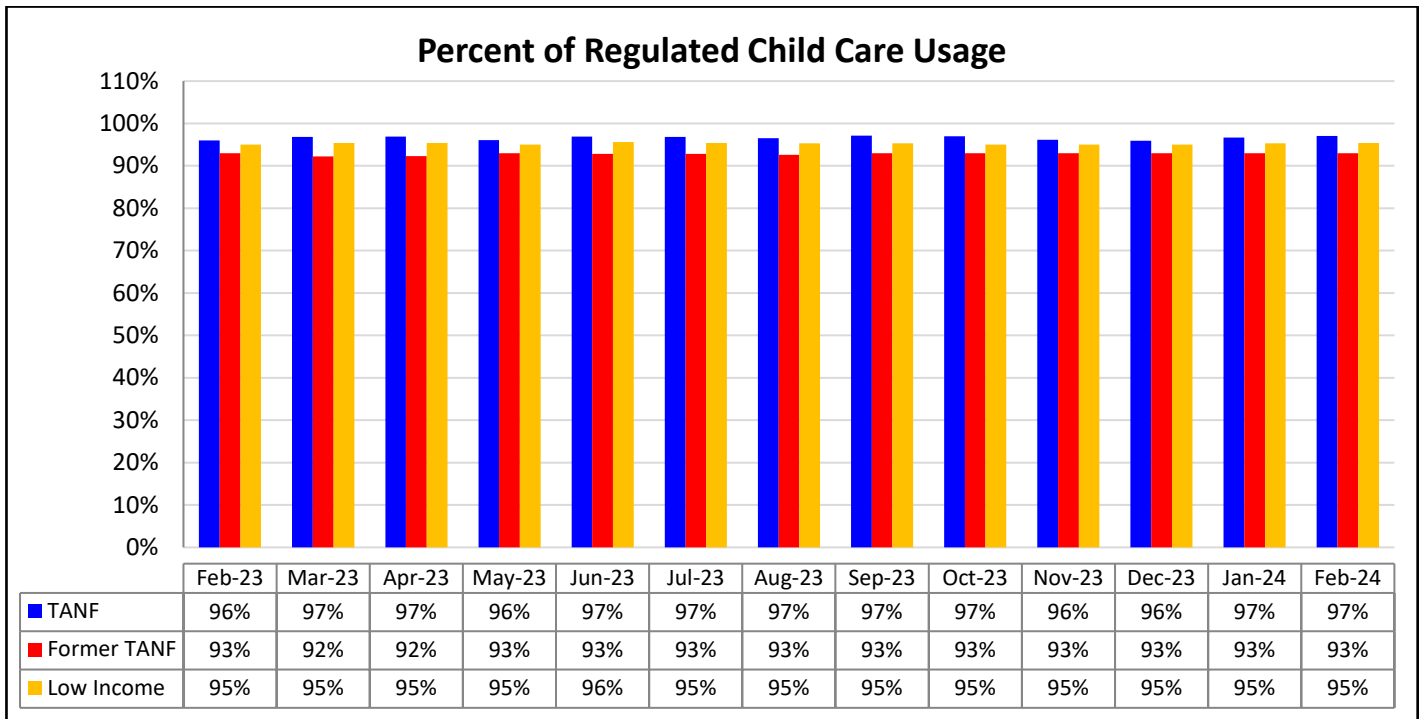
Data Source: Automatic Intake and Incident Reporting System (admissions); Ansell-Casey Life Skills Assessment (life skills)

CHILD CARE AND EARLY LEARNING SERVICES

Child Care Subsidies	Number of Children Receiving* (Feb 2024)	Encumbrance (Feb 2024)	# on Waiting List (Feb 2024)
TANF	4,557	86%	0
Former TANF	13,691	49%	0
Low Income	75,056	91%	0

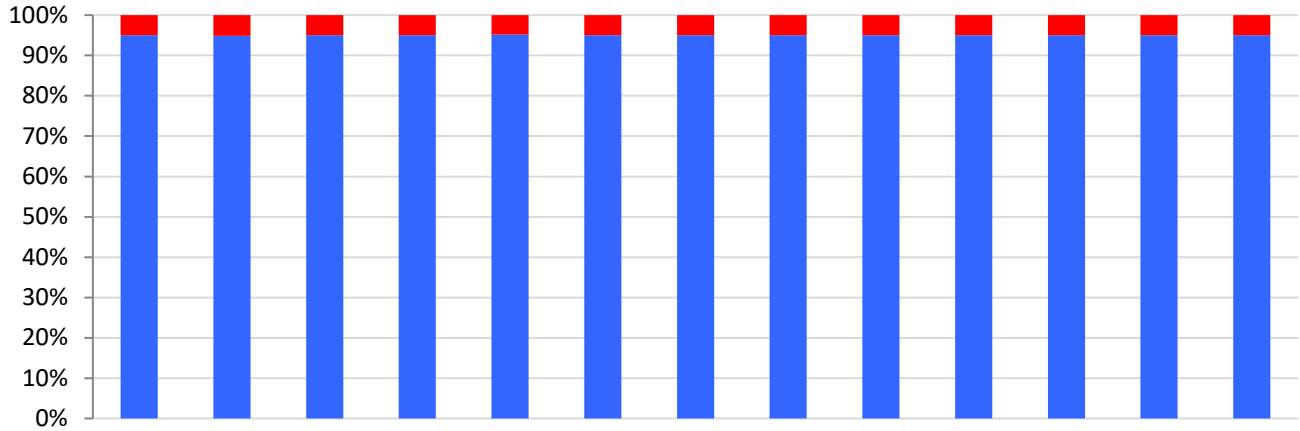
Data Sources: PELICAN CCW and PELICAN Child Care DW

*Preliminary Number – final number will be determined as additional data becomes available.



Data Source: PELICAN CCW

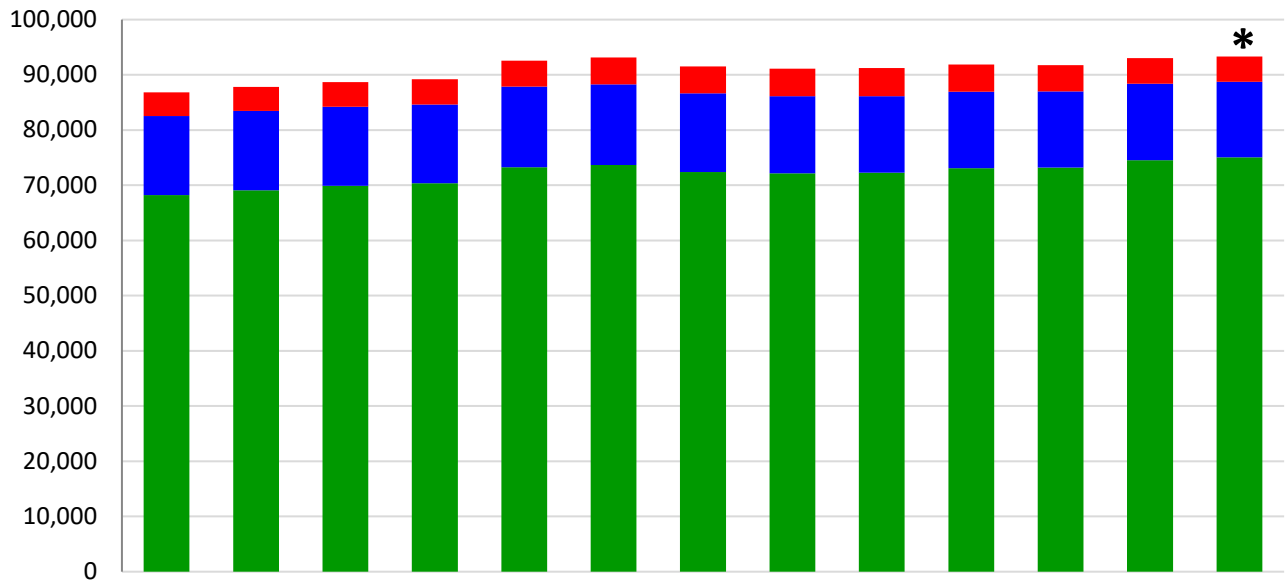
Percent of Children Receiving Subsidized Child Care in Regulated Versus Unregulated Settings



	Feb-23	Mar-23	Apr-23	May-23	Jun-23	Jul-23	Aug-23	Sep-23	Oct-23	Nov-23	Dec-23	Jan-24	Feb-24
■ Unregulated	5%	5%	5%	5%	5%	5%	5%	5%	5%	5%	5%	5%	5%
■ Regulated	95%	95%	95%	95%	95%	95%	95%	95%	95%	95%	95%	95%	95%

Data Source: PELICAN CCW

Children Receiving Subsidized Child Care

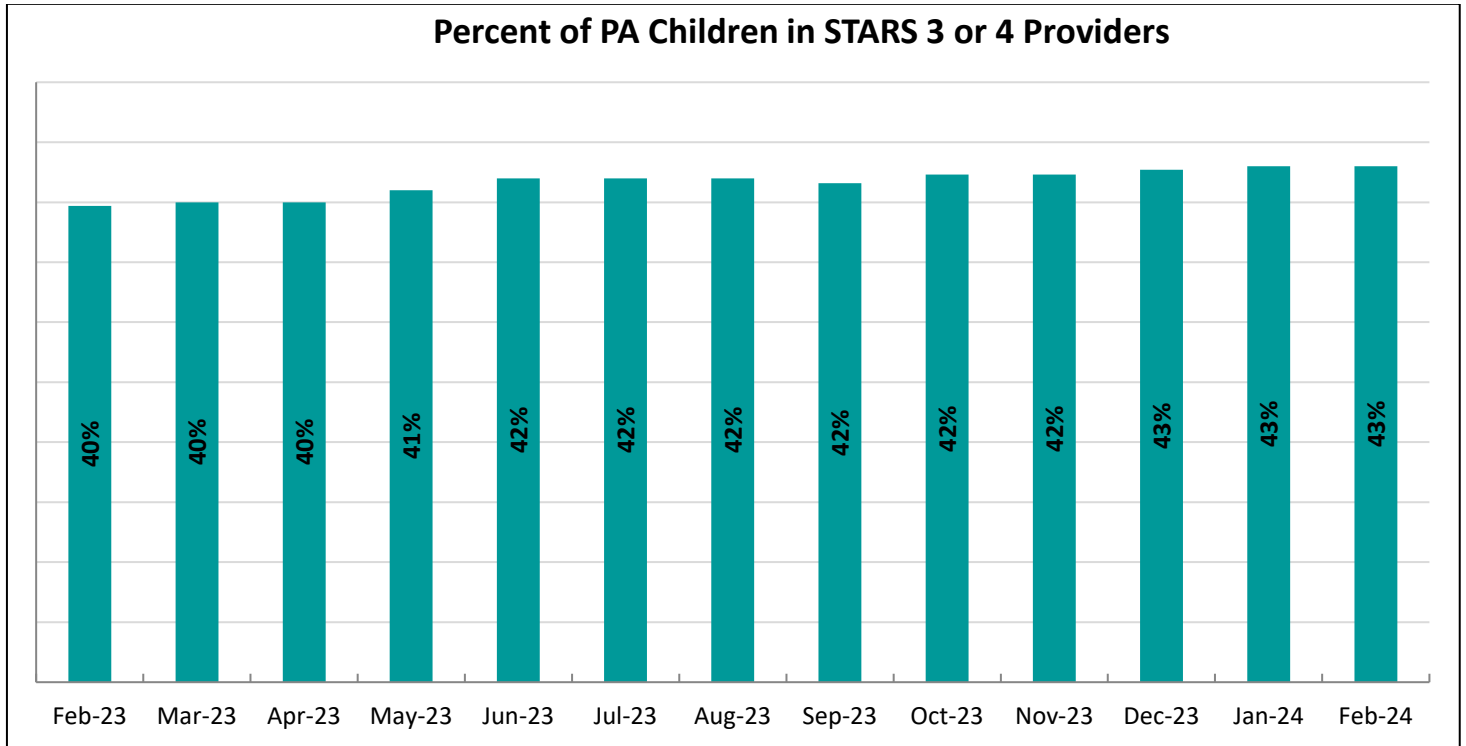


	Feb-23	Mar-23	Apr-23	May-23	Jun-23	Jul-23	Aug-23	Sep-23	Oct-23	Nov-23	Dec-23	Jan-24	Feb-24
■ TANF	4,319	4,346	4,439	4,546	4,700	4,903	4,867	4,956	5,118	4,962	4,728	4,644	4,557
■ Former TANF	14,318	14,359	14,322	14,308	14,575	14,592	14,263	13,981	13,810	13,856	13,783	13,847	13,691
■ Low Income	68,194	69,111	69,894	70,338	73,263	73,653	72,379	72,173	72,290	73,069	73,222	74,556	75,056

*Preliminary Numbers – final numbers will be determined as additional data becomes available Data Source: PELICAN CCW
 NOTE: Beginning July 2012, number of children being served has decreased due to correction of a contractor error where children on the waiting list were being counted as receiving services.

Keystone STARS	Current	Historical
% of Keystone STARS Providers at STAR 3 or STAR 4	32% (Feb 2024)	32% (Jan 2024)

Data Source: PELICAN KTQ



Data Source: PELICAN CCW

Infants, Toddlers, and Families Waiver and Early Intervention (0-3)	Current	Historical
Early Intervention Enrollment (1-day Count)	27,267 (Feb 2024)	27,217 (Jan 2024)
Early Intervention Enrollment (Unduplicated Total)	27,316 (Feb 2024)	27,296 (Jan 2024)
Waiver (Monthly Average)	2,397 (Feb 2024)	2,258 (Jan 2024)
Children Who Met EI Goals Prior to 3 rd Birthday	307 (26%) (Feb 2024)	341 (27%) (Jan 2024)

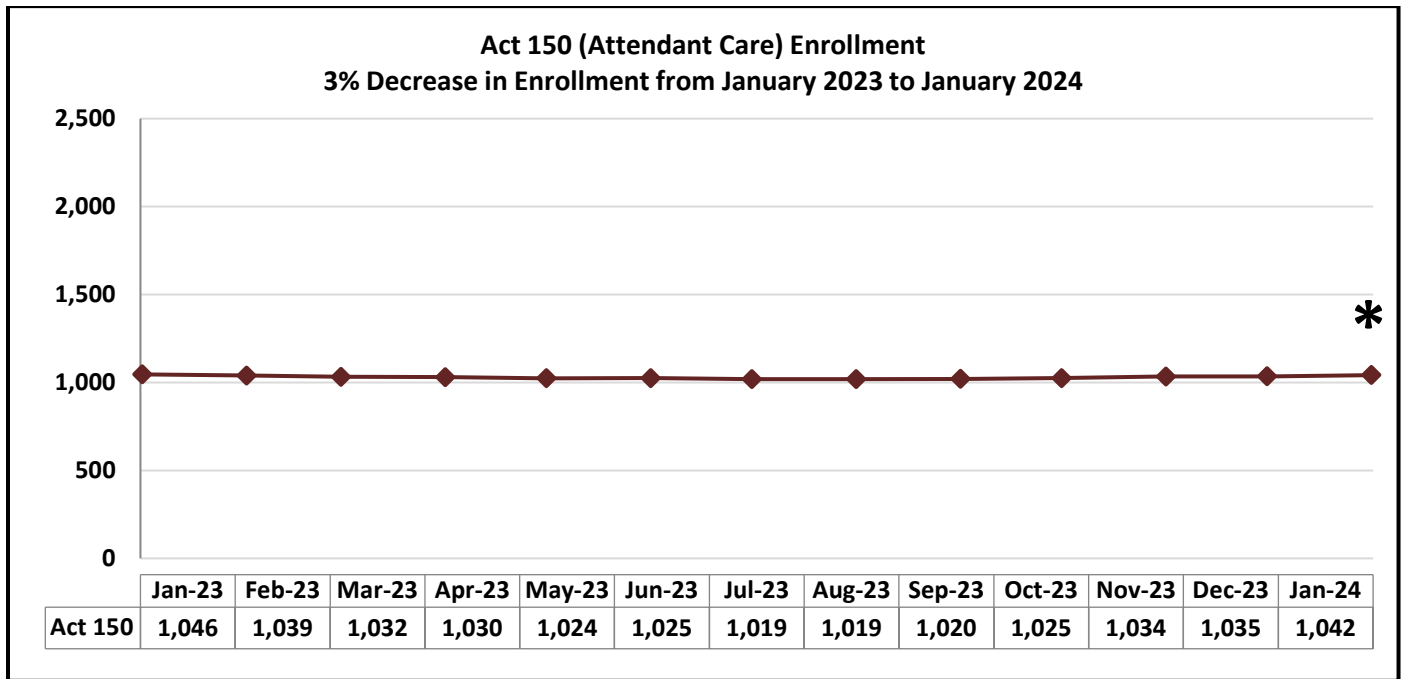
Data Sources: HCSIS DW, EI Ad Hoc Reporting Tool

Early Intervention Enrollment – The total number of children currently receiving services and supports through the EI program. The count of children (birth to three) who have a 25% delay in one or more of the following areas: cognitive development; physical development including vision and hearing; communication development; social or emotional development; or adaptive development.

ITF Waiver Enrollment – The total number of children currently receiving services and supports through the Infants, Toddlers, and Families Waiver. The count of children (birth to three) who are eligible for Medical Assistance, have a 50% delay in one area or 33% delay in two areas, and receive services in the home or a community setting.

Early Intervention Children Who Met EI Goals Prior to 3rd Birthday – Of children receiving early intervention services between the ages of zero and three, the number who meet their developmental goals by their 3rd birthday.

LONG TERM SUPPORTS FOR PERSONS WITH DISABILITIES AND OLDER PENNSYLVANIANS

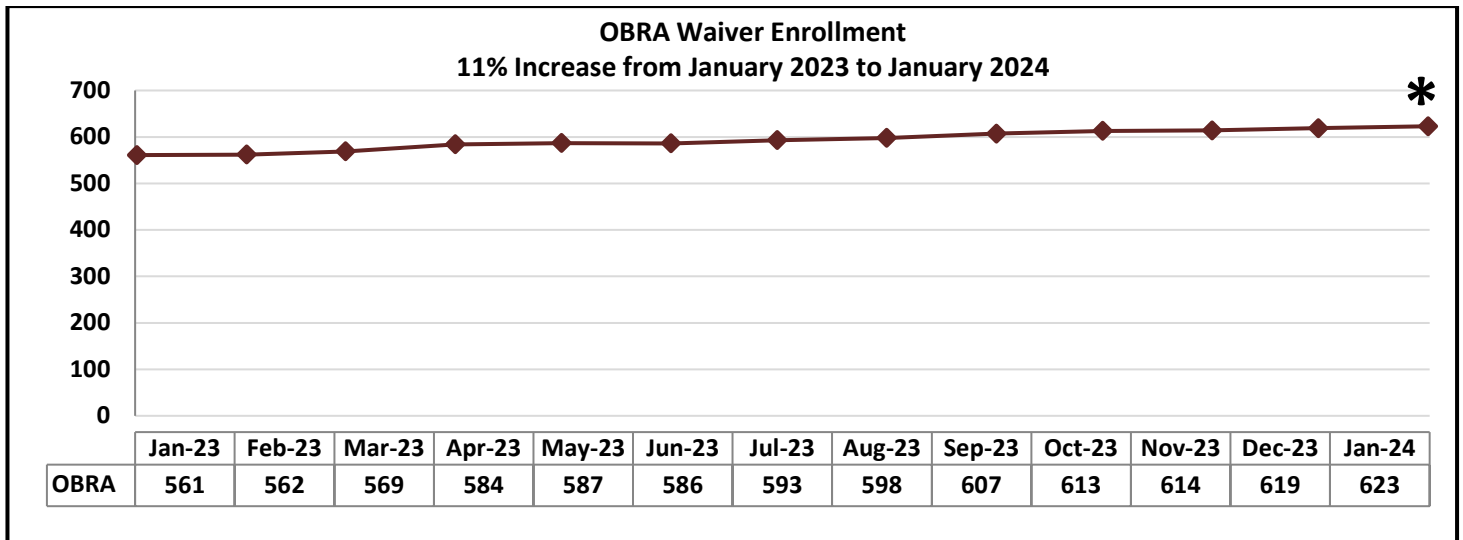


Source: DHS Enterprise Data Warehouse

***Preliminary Number – will be updated as additional data becomes available**

Data is for statewide Fee for Service enrollment only.

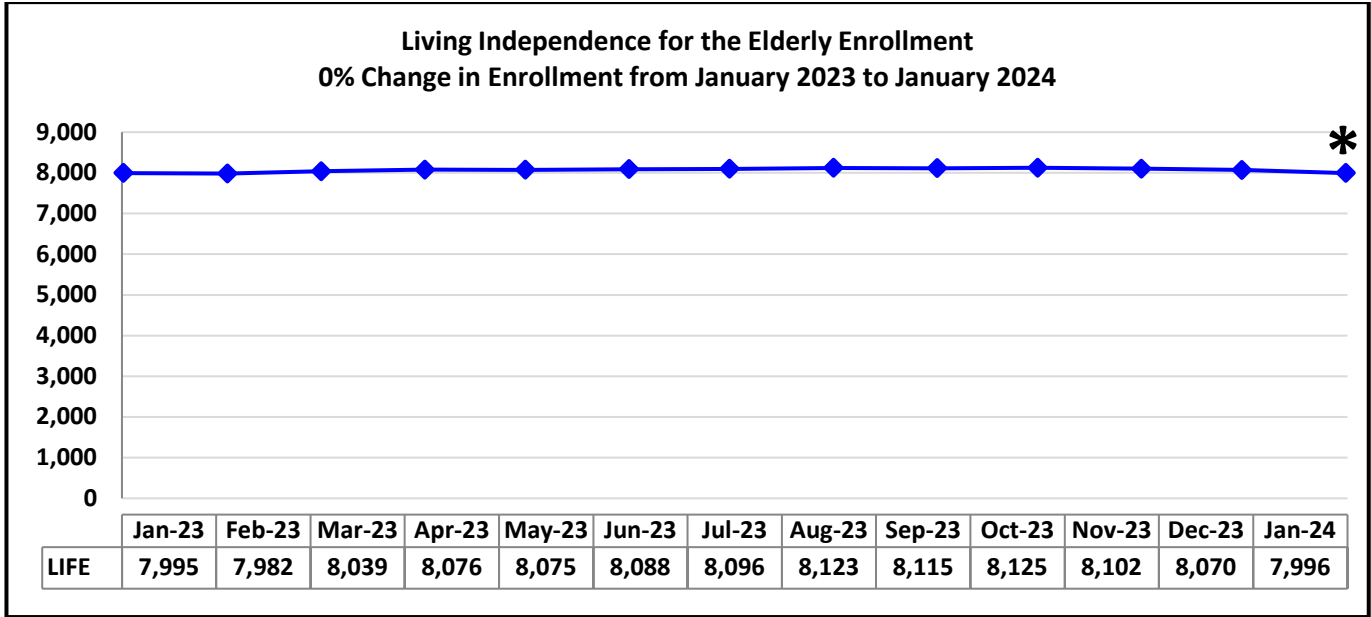
Point-in-time (last day of month) count of unduplicated participants with an Approved Service Plan in DHS’s case management system. The Act 150 provides service coordination, personal assistance and personal emergency response system to individuals with physical disabilities, age 18 through 59, who are mentally alert. This waiver also provides community transition services. This is a state funded program. Participants must be NFCE but are not financially eligible for Medicaid.



Source: DHS Enterprise Data Warehouse

***Preliminary Number – will be updated as additional data becomes available**

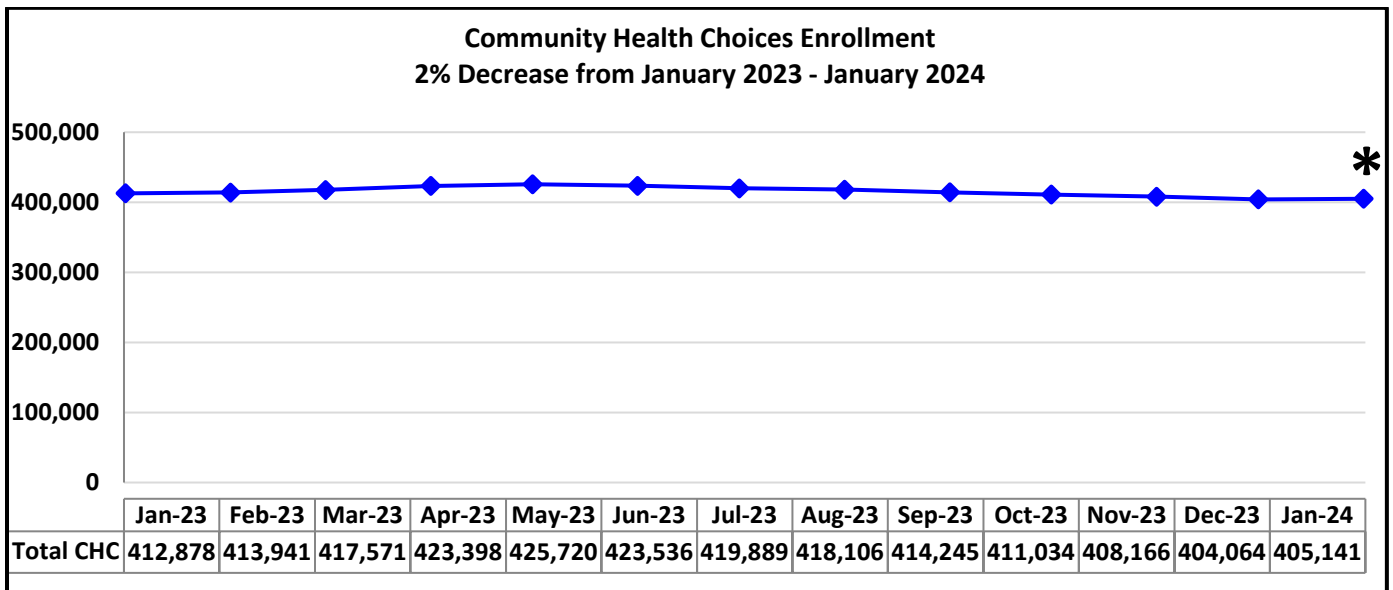
In December 2019, individuals in this waiver were reassessed and some were moved into the Community Health Choices Waiver. Point-in-time (last day of month) count of unduplicated participants with an Approved Service Plan in DHS’s case management system. This waiver provides services to recipients who have developmental physical disabilities which results in at least three substantial functional limitations, age 18 through 59; disability manifested prior to age 22, and the disability is expected to continue indefinitely; requires ICF/ORC level of care.



Source: DHS Enterprise Data Warehouse

***Preliminary Number – will be updated as additional data becomes available.**

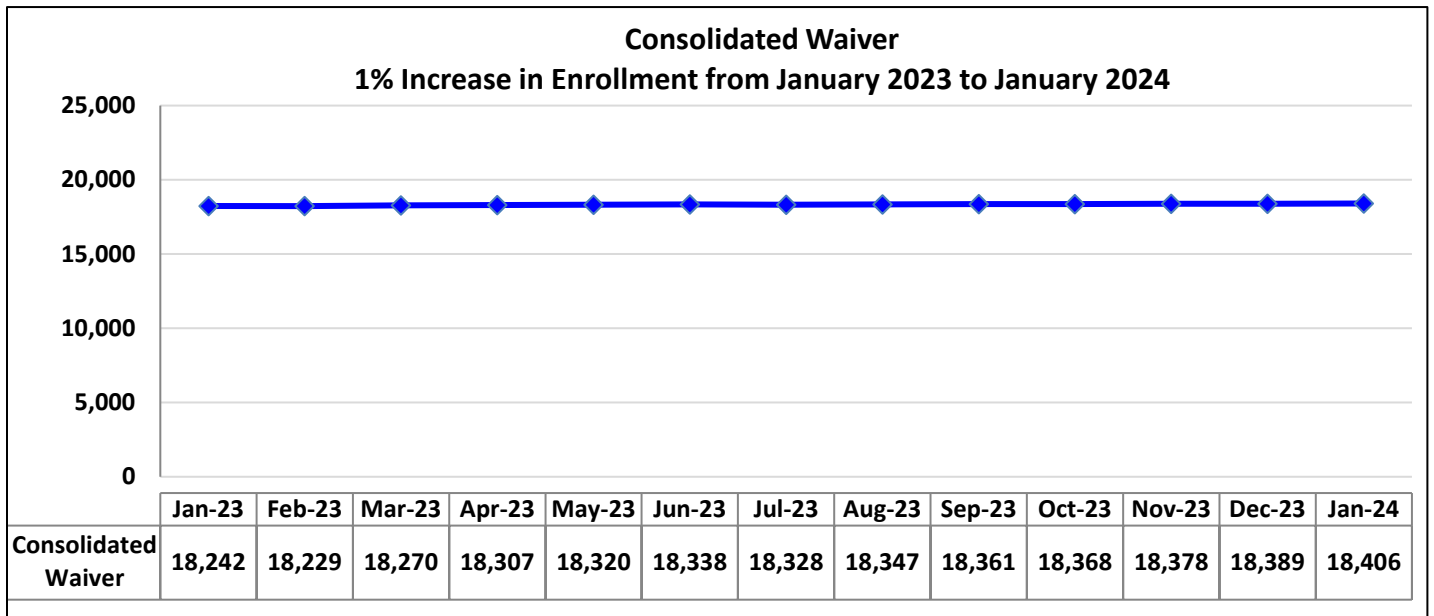
Unduplicated count of recipients which had claims in the month requested. LIFE is a managed care program and provides a comprehensive all-inclusive package of services for Pennsylvanians age 55 or older who meet the level of care needs for a Skilled Nursing Facility or a Special Rehabilitation Facility to enable them to maintain independence in their homes for as long as possible. Be age 55 or older, meet NFCE or a special rehabilitation facility, reside in an area served by a LIFE provider and be able to be safely served in the community as determined by a LIFE provider.



***Preliminary Number – will be updated as additional data becomes available**

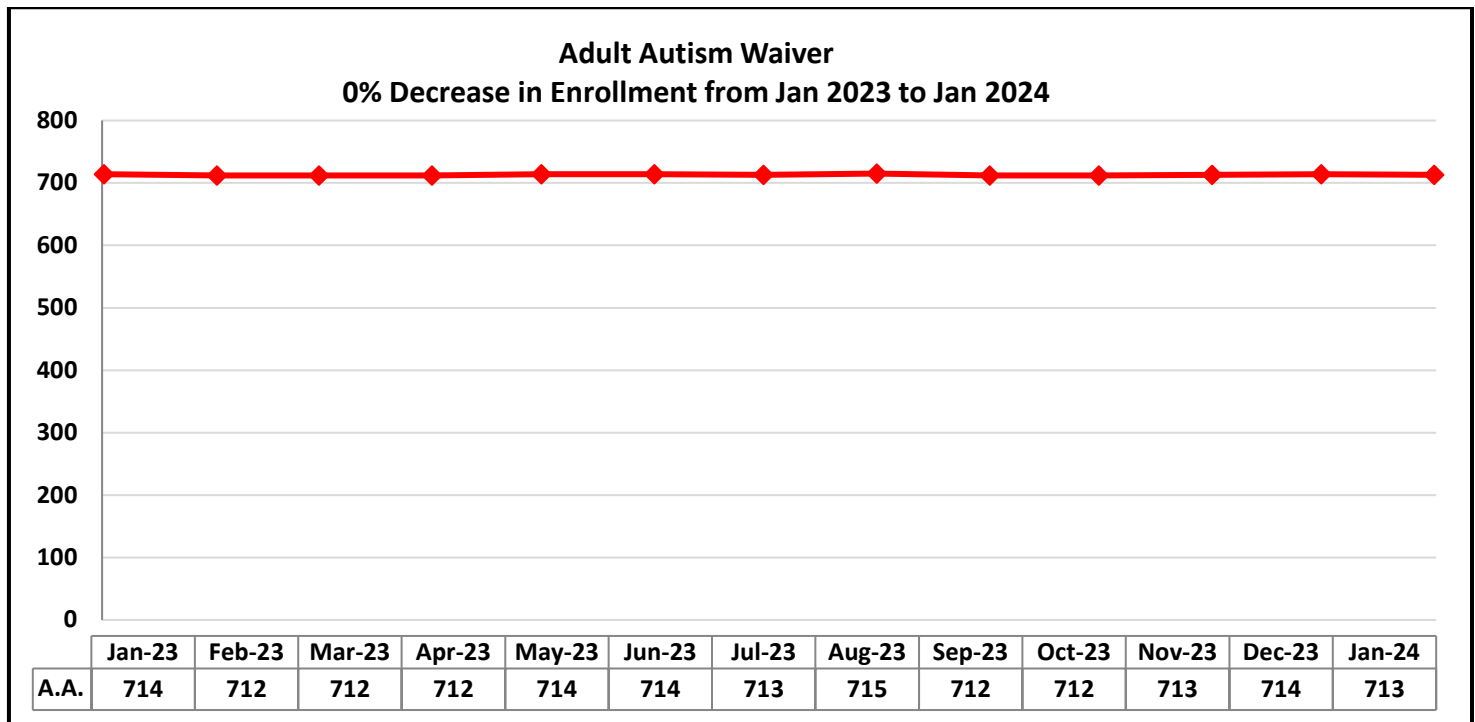
In January 2020, all counties were moved into CHC

CHC includes individuals who are 21 years of age or older and dually eligible for Medicare and Medicaid, and Individuals who are 21 years of age or older and eligible for Medicaid (LTSS) because they need the level of care provided by a nursing facility.



Source: DHS Enterprise Data Warehouse

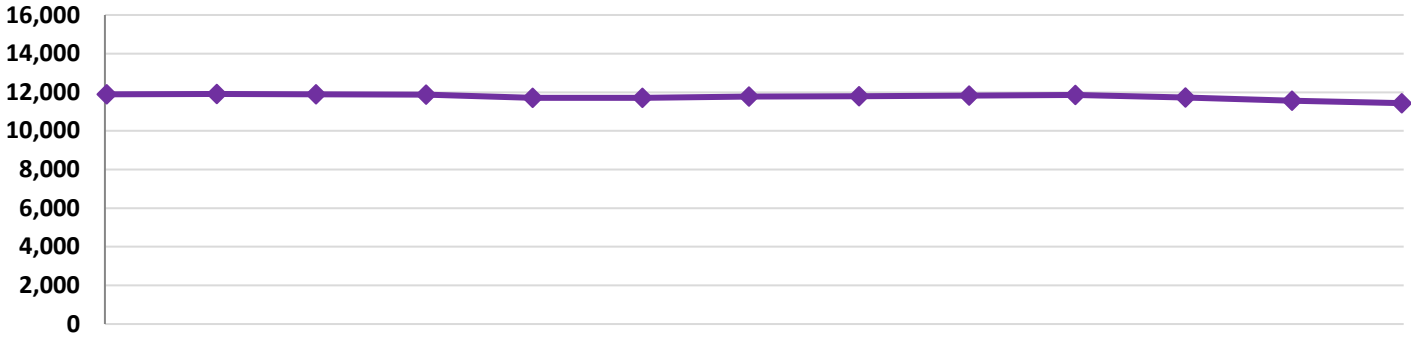
Provides home and community services, including supports coordination and environmental accessibility adaptations, for individuals with intellectual disabilities who require an intermediate care facility level of care.



Source: DHS Enterprise Data Warehouse

Provides home and community services to persons, age 21 and over, with autism spectrum disorder to help them participate in their communities.

**Person/Family Directed Support Waiver
4% Decrease in Enrollment from January 2023 to January 2024**

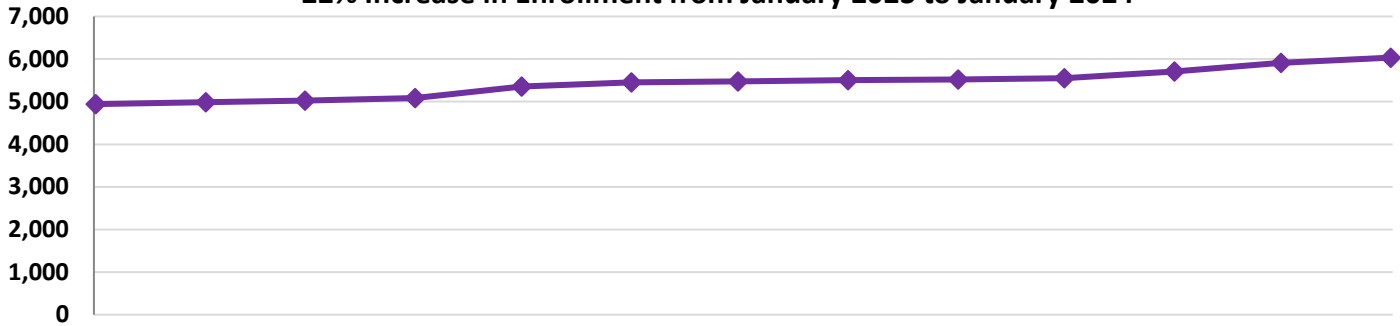


	Jan-23	Feb-23	Mar-23	Apr-23	May-23	Jun-23	Jul-23	Aug-23	Sep-23	Oct-23	Nov-23	Dec-23	Jan-24
P/FDS	11,895	11,911	11,897	11,881	11,704	11,715	11,772	11,800	11,819	11,858	11,724	11,559	11,436

Source: DHS Enterprise Data Warehouse

Provides a limited array of services and supports, such as therapy and nursing and personal support, to individuals with intellectual disabilities who require an intermediate care facility level of care. Aimed primarily at those residing in their homes or with family members.

**Community Living Waiver
22% Increase in Enrollment from January 2023 to January 2024**



	Jan-23	Feb-23	Mar-23	Apr-23	May-23	Jun-23	Jul-23	Aug-23	Sep-23	Oct-23	Nov-23	Dec-23	Jan-24
Community Living	4,943	4,984	5,028	5,089	5,357	5,450	5,476	5,504	5,523	5,551	5,708	5,911	6,034

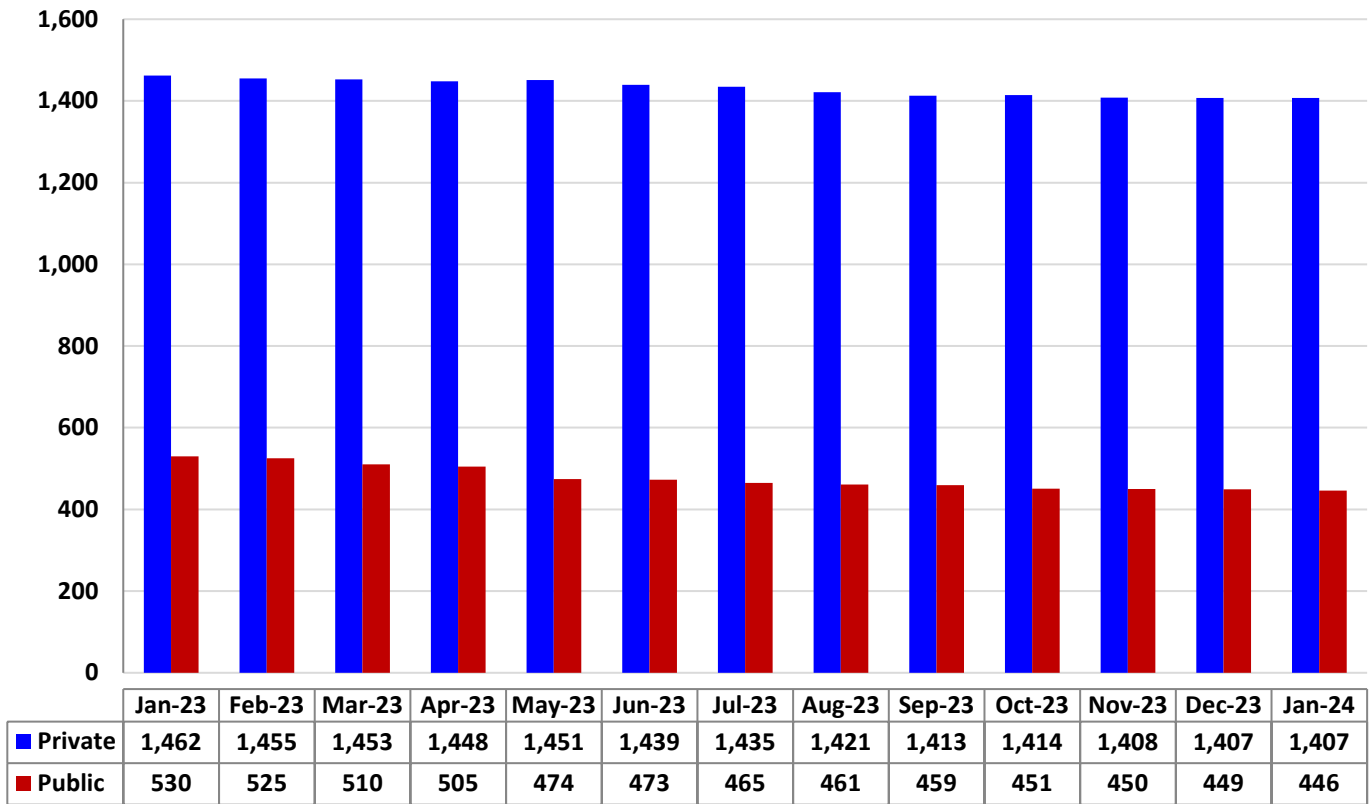
Source: DHS Enterprise Data Warehouse

The Community Living Waiver is a new waiver that became effective in January 2018. It will support individuals to live more independently in their homes and communities through the provision of a variety of services that promote community living, employment, communication, self-direction, choice and control.

**Residents in Intermediate Care Facilities for Persons with Intellectual Disabilities
(Last Day of Month)**

Private ICFs/ID: 4% Decrease in Enrollment from Jan 2023 to Jan 2024

Public ICFs/ID: 16% Decrease in Enrollment from Jan2023 to Jan 2024



Source: DHS Enterprise Data Warehouse and Mapper/FACT system

OTHER METRICS

Third Party Liability

	Previous Month	Current Month	FYTD
Recoveries (Casualty, Estate, Health Insurance and HMS)	\$13,691,086 (Aug 2023)	\$23,798,363 (Sept 2023)	\$49,450,148
Cost Avoidance (HIPP and Health Insurance)	\$16,769,111 (July 2022)	\$16,008,544 (Sept 2022)	\$52,689,920

Data Source: TPL Financial Accounting System

Bureau of Program Integrity

	Current Month	FYTD
Provider Review Overpayment Recoveries	\$290,3967 (Sept 2023)	\$810,920
Recipient Restriction Cost Avoidance*	\$540,900 (Sept 2023)	\$1,674,900

Data Source: DHS Executive Dashboard