

# Office of Medical Assistance Programs MAAC Updates

Sally A. Kozak MHA, RN  
Deputy Secretary

- Deputy Secretary Updates
  - Transforming Maternal Health Model
  - Dental Update
  - Removal of Daily Dose Limit for Buprenorphine
  - PA Navigate
  - CMS School-Based Services Grant Opportunity
  - Doula and Pharmacist Enrollment Updates
  - Medical Assistance Transportation Program (MATP) Study Update
  - Pediatric Shift Nursing

# PA Navigate Overview for Medical Assistance Advisory Committee

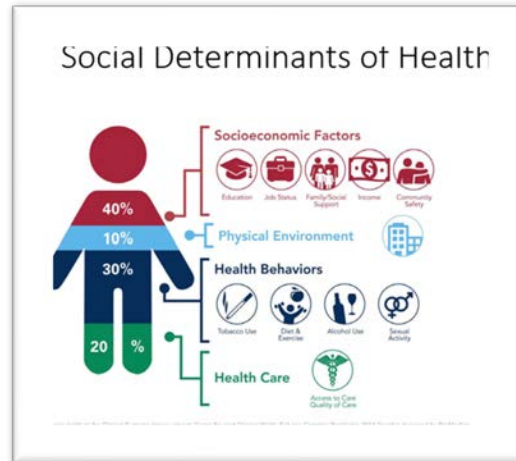
**February 22, 2024**

**Presented by: Martin Ciccocioppo, Director, PA eHealth Partnership**

# What is PA Navigate?



A statewide community information network designed to address health and social care needs for Pennsylvanians by connecting them to community services.



## Goals:

- ▶ *Build a statewide platform connecting patients to social services*
- ▶ *Making SDOH/HRSN data as shareable as clinical data*
- ▶ *Understanding citizens' needs and capacity to meet them*
- ▶ *Help make Social Care sustainable*

# Timeline

- **DHS grant to HIEs through January 2025**
  - Member/CBO integrations through January 2025
- **HIEs ran procurement for Resource & Referral Platform**
  - Selected **findhelp** as statewide vendor
- **Initial priorities:**
  - Setup & implementation
  - Integration with HIE systems
  - Contracting & integration discovery calls with Member Orgs/CBOs



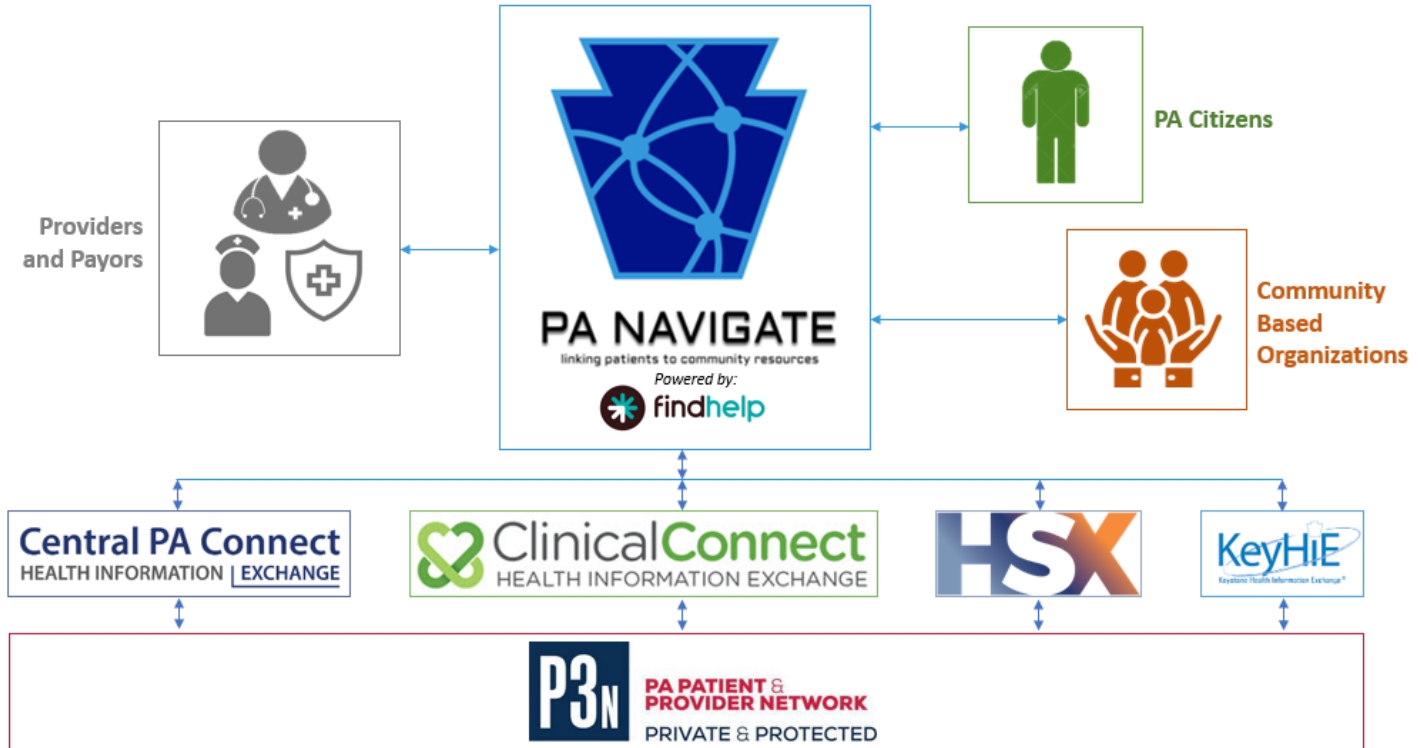
✓ **MAJOR MILESTONE:**

Public launch: January 23, 2024, at Community Action Partnership of Lancaster

URL: [pa-navigate.org](http://pa-navigate.org)

Email: [info@pa-navigate.org](mailto:info@pa-navigate.org)

# PA Navigate Participants



## PA Navigate Benefits

- Improved Communication and Reduced Care Silos
- Increased Awareness of Available Services
- Suite of Low-Cost / No-Cost Online Referral Tools

### Providers & CBOs

- Demonstrate your impact to partners & current/potential funders
- More impact/funding → more people you can assist
- Financial incentives for closing the loop being developed
- Analytics to better understand operations
- Consolidate referral sources on a common platform
- Integrate with your existing system to streamline workflow

### Community

- Public-facing self-serve option for citizens
- Better coverage of SDOH needs = better outcomes
- Population health monitoring for social needs
- Uncovering areas of unmet need/capacity
- Demonstrating the value of addressing social needs in terms of improved health outcomes
- Attracting more Medicaid funding to PA

# PA Navigate PCMH Scenario



- Emily is referred by her MCO to a local food pantry for short-term food support
- Food pantry volunteer enrolls her in services, updates status in PA Navigate
- PA Navigate shares Emily's need and service status with referring MCO and Emily's healthcare team
- Food pantry uses data from PA Navigate to develop sustained funding/contracts with top referring organizations



- **Deputy Secretary Updates**
  - Transforming Maternal Health Model
  - Dental Update
  - Removal of Daily Dose Limit for Buprenorphine
  - PA Navigate
  - **CMS School-Based Services Grant Opportunity**
  - **Doula and Pharmacist Enrollment Updates**
  - **Medical Assistance Transportation Program (MATP) Study Update**
  - **Pediatric Shift Nursing**

# QUESTIONS?



**pennsylvania**  
DEPARTMENT OF HUMAN SERVICES

