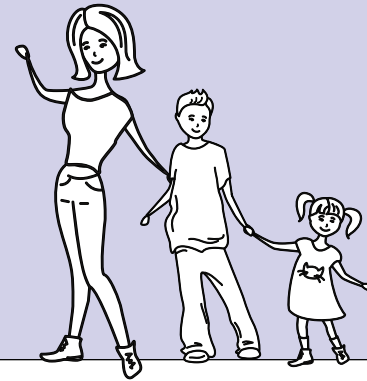


TEMPORARY ASSISTANCE

for Needy Families



Temporary Assistance for Needy Families, also known as TANF, assists families with children when parents or other responsible relatives struggle to make ends meet to provide for the family's basic needs. The program is a crucial safety net for more than 96,963 children and 37,332 adults in Pennsylvania.

THERE ARE SEVERAL ELIGIBILITY REQUIREMENTS



There must be a child younger than 18 in the household, or a child who is 18 and expected to graduate before turning 19.

Parents with dependent children who meet one of the following criteria are TANF-eligible



Unemployment
of one or both
parents



Absence
of a
parent



Disability
of one or both
parents

In addition to meeting income requirements, a family must have no more than \$1,000 in countable resources. Countable resources include:



Bank
account



Savings
account

Second
car

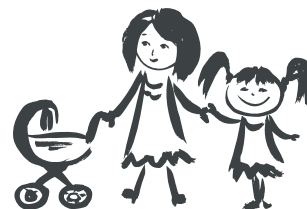


FAMILIES AREN'T GETTING RICH FROM TANF

The average family on TANF is a **family of three** receiving **\$403 per month** in assistance.



The program is time-limited. With limited exceptions, families are only able to receive TANF for up to five cumulative years.





TANF HAS WORK REQUIREMENTS

Many people who receive TANF must participate in a work activity for a minimum number of hours per week. Hourly requirements vary based on:



Whether 1 or 2 parents live in the household

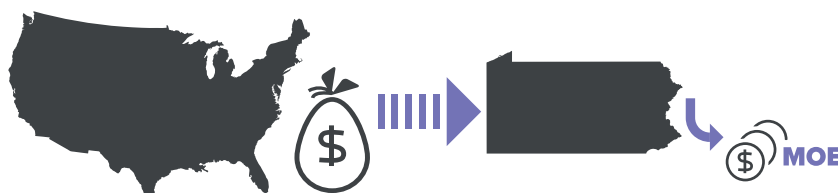


The age of child(ren) in the household

(Exceptions are made for people who can't work due to a physical or mental disability.)

TANF IS FEDERALLY FUNDED

However, keeping federal funding requires a Maintenance of Effort (MOE) from states. States must spend a minimum specified amount of their own funds for benefits and services, or else they can lose federal grant money.



WHERE TANF FUNDING GOES

Most TANF funds are spent on child care and supporting early learning programs so parents with low incomes can work, participate in job training, or complete an educational program.

