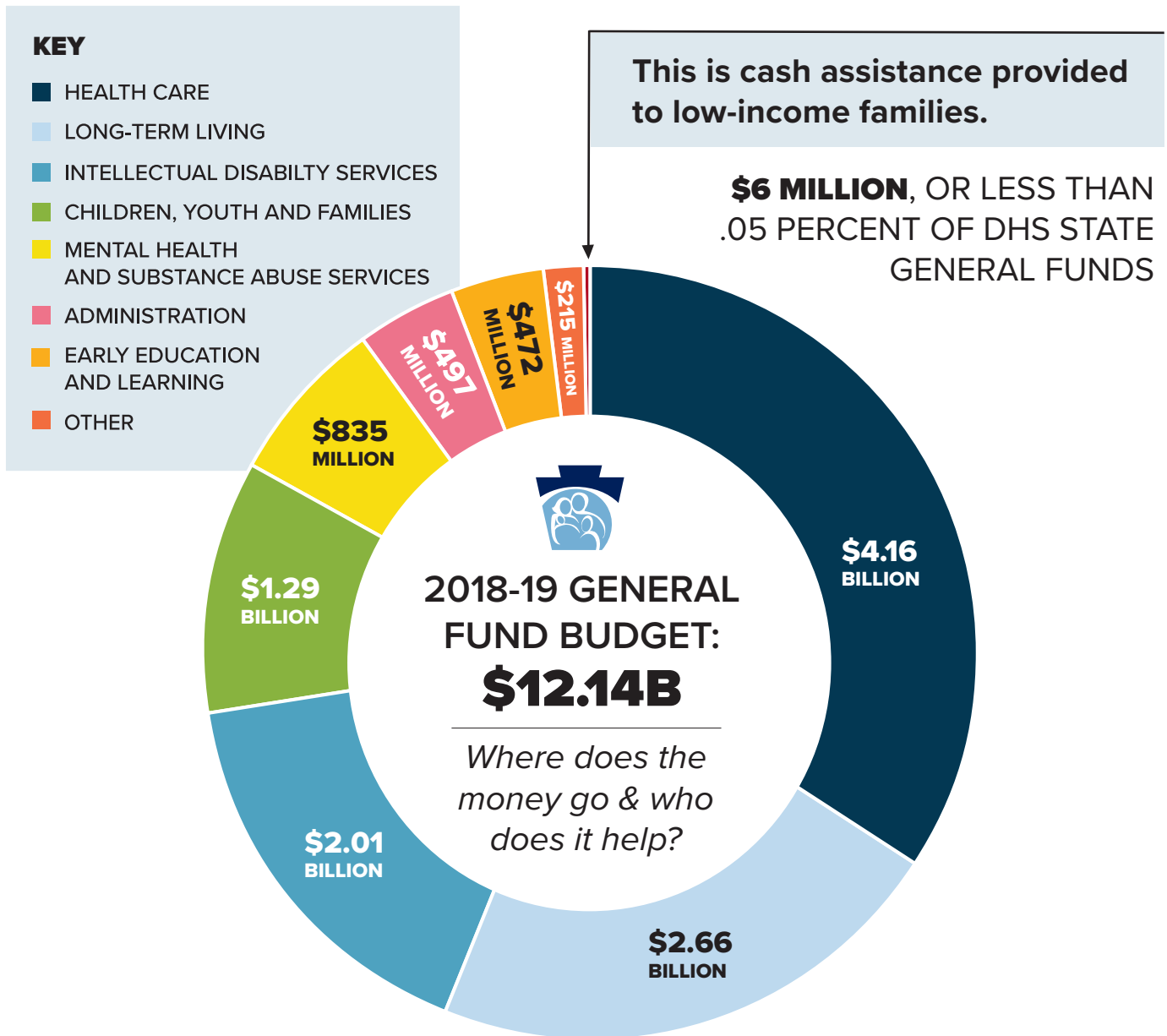


The True Cost of Welfare

Cash assistance — what most people think of as welfare — makes up a small portion of DHS’ total state budget. Most benefits overseen by the department are not cash benefits. The vast majority of departmental spending provides health care, services to seniors and individuals with disabilities, and services to children and families throughout Pennsylvania.



*The Supplemental Nutrition Assistance Program (SNAP) and Low-Income Home Energy Assistance Program (LIHEAP) are federally funded and are not cash benefits.