

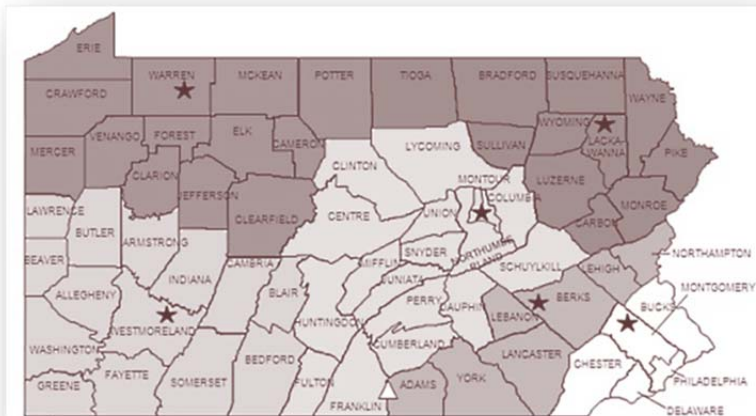


pennsylvania

DEPARTMENT OF PUBLIC WELFARE

OFFICE OF MENTAL HEALTH AND
SUBSTANCE ABUSE SERVICES

*Pennsylvania State Hospital System
Risk Management Summary Report
November 2012 – Amended*



State Hospital Mental Health Facilities



South Mountain Restoration Center

Prepared by: John Deegan, M.S.
Chief Performance Improvement Executive
Wernersville State Hospital
E-mail: jdeegan@pa.gov

Contributors:
SMH CPIEs & PI Staff
Valerie Minnich, RPh
January 3, 2013

On the Internet:

<http://www.dpw.state.pa.us/publications/forproviders/statehospitalriskmanagementsummaryreports/index.htm>

Introduction

The State Hospital Risk Management System defines an incident as any patient-related event that has the potential for, or which results in, a negative impact upon the quality of patient care or services, including injury or death of a person served in the state hospital system.

The data dictionary for the measurement system was updated on October 1, 2008, and is available for review as attachments to OMHSAS Bulletin titled Management of Incidents: SI-815 Incident Reporting and Risk Management Policy and Procedural Change. (Available via bulletin search at <http://www.dpw.state.pa.us>.)

Table of Contents		
Indicator/Measure	Table	Page
Census and Rates of Incidents	1	3
Thirteen-Month Trend of Incidents		3
Six-Month Summary of Selected Events		4
Category or Cause of Incidents: Civil	2	5
Primary Effect of Incidents: Civil	3	6
Category or Cause of Incidents: Forensic	4	7
Effect of Incidents: Forensic	5	7
Cause of Incidents: Long Term Care	6	8
Effect of Incidents: Long Term Care	7	8
Cause of Incidents: SRTP	8	9
Effect of Incidents: SRTP	9	9
Tobacco Users	10	10
Diabetes	11	10
Reasons for Hospitalization as a Result of an Incident	12	10
13-Month Rate of Type 1 Falls per 1,000 Days of Care	13	11
13-Month Trend of Type 1 Falls		11
Hours of Seclusion Use	14	12
Number of Seclusion Events	15	12
Total Hours of Mechanical Restraint by Unit	16	12
Hours of Mechanical Restraint Use: 12 Months	17	12
Number of Mechanical Restraint Events: 12 Months	18	12
Hours of Physical Restraint Use by Unit	19	13
Hours of Physical Restraint Use: 12 Months	20	13
Number of Physical Restraint Events: 12 Months	21	13
24-Month Trend of Restraint and Seclusion Hours		14
Benzodiazepines	22	15
Multiple Atypicals	23	15
Typical-Atypical	24	15
Patient-to-Patient Assaults by Unit	25	16
13-Month Rate of Patient-to-Patient Assault Events with Injury per 1,000 Days-of-Care	26	16
Patient-to-Staff Assaults by Unit	27	17
13-Month Rate of Patient-to-Staff Assaults with Injury to Staff per 1,000 Days-of-Care	28	17

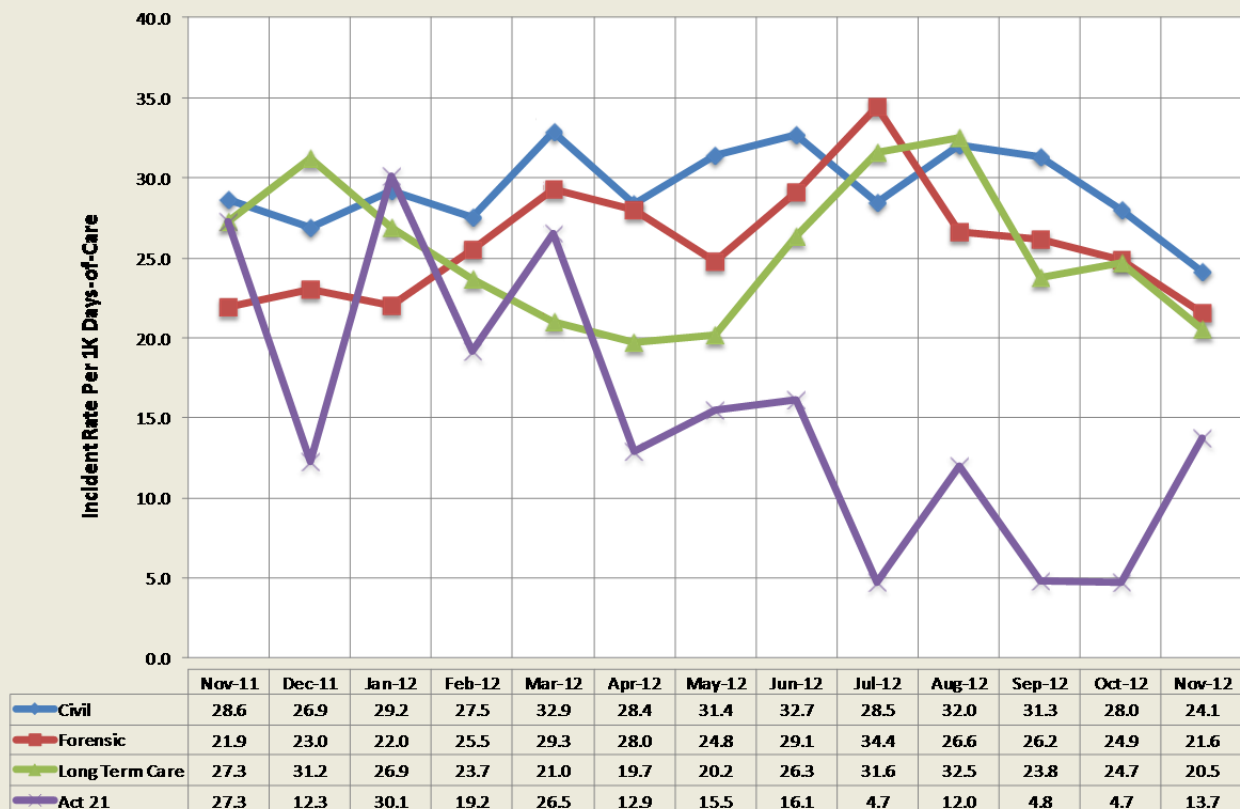
During **November 2012** a total of 1270 incident reports were completed by the state hospital system. Additional records addressing specific categories from the previous month were included on page 4 of this report.

The following is a breakdown of incidents by individual facility and type of care:

Table 1 - Number of Incident Reports

Civil	Census 11/30/12	Days Provided	Incidents	Per 1000 Days-of-Care
Clarks Summit	218	6551	103	15.7
Danville	169	5030	170	33.8
Norristown	156	4681	157	33.5
Torrance	208	5935	143	24.1
Warren	172	5183	152	29.3
Wernersville	262	7917	256	32.3
Total Civil	1185	35297	981	27.8
Forensic				
Norristown	130	3942	121	30.7
Torrance	91	2671	22	8.2
Total Forensic	221	6613	143	21.6
Act 21				
Act 21	35	1020	14	13.7
Total Act 21	35	1020	14	13.7
Long Term Care				
South Mountain	141	4289	88	20.5
Total L. T. C.	141	4289	88	20.5
Total	1582	47219	1226	26.0

Thirteen-Month Trend of Incidents by Type of Care per 1,000 Days of Care



*Note: Rules regarding the reporting of incidents involving patient-to-patient assaults require a separate incident report form on each person involved in an altercation. This includes both the aggressor, when known and any other person involved. The numbers reported above reflect the monthly, total number of SI-815 reports coded as Patient-to-Patient Assaults and not the actual number of altercations.

This table is updated/refreshed each month from the most recent data (six month period) available from the State Hospital System RM database.

CATEGORY	Count	Jun_12	Jul_12	Aug_12	Sep_12	Oct_12	Nov_12
Accident-Injury	306	57	45	76	43	45	40
Adverse Drug Reaction	24	1	4	10	3	3	3
Aggression	899	190	136	138	134	155	146
Airway Obstruction type 1 Intervention	28	4	9	5	2	6	2
Airway Obstruction type 2 No Intervention	18	1	3	5	3	4	2
Alleged Nonconsensual Sexual Activity	25	10	2	4	9		
Alleged Pt. Abuse	50	5	5	13	10	10	7
Alleged Suspected Criminal Act	1		1				
Assault, Pt./Pt	2148	407	350	403	354	313	321
Assault, Pt./Staff	586	108	100	100	113	93	72
Assault: Patient/Other	4	1		1		1	1
AWOL/UA	79	20	8	18	12	11	10
AWOL-Attempt	41	7	4	7	7	11	5
AWOL-Late	72	14	11	9	15	7	16
Change in Medical Status-Stabilized	107	12	21	22	20	22	10
Change in Medical Status-Transferred	365	68	68	53	62	65	49
Charged post admit/crime committed prior to admit	5	1	1			1	2
Charged with alleged crime on hospital grounds	6	1	2	1	1		1
Communications Sys. Misuse	14	2	1	3	1	7	
Community Incident	12	3	1	2	1	4	1
Contraband Possession	115	16	11	22	16	22	28
Fall Type 1-Injury with treatment	425	77	87	76	59	69	57
Fall Type 2-No treatment needed	725	116	135	135	125	113	101
Family Concern	26	3	5	1	6	8	3
Illicit Substance Use/Possession	7	2	2	2			1
Indeterminate/Unconfirmed Cause of Injury	209	33	42	38	33	30	33
Medication Error	205	24	29	33	46	41	32
Missing Property	61	8	10	12	8	8	15
Other	588	120	103	97	92	94	82
Procedural Treatment Error	34	6	5	5	1	8	9
Property Damage	99	22	12	13	16	17	19
Seizure	38	2	10	7	3	9	7
Self-Injurious behavior	790	153	144	134	124	124	111
Sexual Behavior	116	11	25	16	13	23	28
Smoking Violation	249	21	37	41	52	49	49
Substantiated Nonconsensual Sexual Activity	2		2				
Substantiated Patient Abuse	6	1	1	3	1		
Suicide Attempt	14	3	4	3	1	3	
Suicide threat/plan	42	9	6	7	4	9	7
Theft	63	10	6	10	11	13	13
Unknown	14	2		1	1	4	6
Unsubstantiated Nonconsensual Sexual Activity	3						3
Unsubstantiated Patient Abuse	21	3	2	6	4	3	3

Table 2 - Category or Cause of Incidents in the Civil Hospitals

Primary Cat #	CLA	DAN	NOR	TOR	WAR	WER	Count
Accident-Injury	1	10	8	3		4	26
Adverse Drug Reaction						1	1
Aggression	16	16	18	10	15	30	105
Airway Obstruction type 1 Intervention				1		1	2
Airway Obstruction type 2 No Intervention			1			1	2
Alleged Pt. Abuse	3					3	6
Assault, Pt./Pt	39	38	51	24	25	60	237
Assault, Pt./Staff	7	12	13	6	9	14	61
Assault: Patient/Other				1			1
AWOL/UA				2	5	3	10
AWOL-Attempt		1	1	1			3
AWOL-Late			1	1	12	2	16
Change in Medical Status-Stabilized			4			2	6
Change in Medical Status-Transferred	6	6	5	4	2	9	32
Charged post admit/crime committed prior to admit	2						2
Charged with alleged crime on hospital grounds		1					1
Community Incident		1					1
Contraband Possession	5		4	2	14	2	27
Fall Type 1-Injury with treatment	8	9	11	6	7	3	44
Fall Type 2-No treatment needed	3	11	9	22	11	33	89
Family Concern				3			3
Illicit Substance Use/Possession						1	1
Indeterminate/Unconfirmed Cause of Injury	4	5	3	8		10	30
Medication Error		1	1	2		4	8
Missing Property	2	3		3		6	14
Other	3	4	1	19	5	40	72
Procedural Treatment Error		5	1			1	7
Property Damage	1	4	4		1	4	14
Seizure			1		1	1	3
Self-Injurious behavior	3	28	4	8	21	34	98
Sexual Behavior		7	2	6	4	6	25
Smoking Violation			12	10	15	11	48
Suicide threat/plan		2	1			3	6
Theft		1	1		1	10	13
Unknown		1			4		5
Unsubstantiated Nonconsensual Sexual Activity		2		1			3
Unsubstantiated Patient Abuse		2				1	3
Totals	103	170	157	143	152	300	1025

Table 3 - Primary Effect of Incidents in the Civil Hospitals

Primary effect	CLA	DAN	NOR	TOR	WAR	WER	Count
Abrasion/scrape/scratch/hematoma	14	10	12	6	10	26	78
Asphyxiation						1	1
Bite-Human			1		1	3	5
Blister			1	1			2
Body System Illness	1				2		3
Bruise/contusion/discoloration	5	5	6	8	7	14	45
Damaged or lost tooth		1					1
Death	2						2
Edema/swelling	4	3	1	4	1		13
Emesis	2					1	3
Epistaxis	1	2	1		1		5
Erythema/redness	7	16	1	3		1	28
Fever		1				1	2
Fracture		1					1
Ingestion of foreign body			1	1		7	9
Laceration: NO sutures/staples/steri-strips	3	1	4	3	1	3	15
Laceration: with steristrips/glue		1			1		2
Laceration: with sutures/staples	1				1	2	4
Lethargy		1					1
No Injury/NA	61	121	113	103	120	226	744
Other			4	3	1	6	14
Pain unspecified				1			1
Pain, Specified	2	5	9	5	5	7	33
Puncture/stab wound				1			1
Respiratory Distress		1	1	2			4
Seizure			1	1			2
Skin Irritation/Rash			1	1	1	2	5
Unconscious/Unresponsive		1					1
Totals	103	170	157	143	152	300	1025

Table 4 - Cause of Incidents in the Forensic Units Category or Cause of Incidents in the Forensic Service by Unit

	NSH							TSH					
Primary Cat #	51A1	51A2	51B1	51B2	51C1	51C2	Total	FB3	FB4	FC1	FC2	Total	Count
Adverse Drug Reaction			1				1					0	1
Aggression	2	3	6	7	4	4	26	2	4		2	8	34
Alleged Pt. Abuse					1		1					0	1
Assault, Pt./Pt	5	16	19	4	22	3	69			2	2	4	73
Assault, Pt./Staff		1	2	1	3		7	1				1	8
AWOL-Attempt				1	1		2					0	2
Change in Medical Status-Stabilized					1		1					0	1
Change in Medical Status-Transferred		2			1	1	4					0	4
Fall Type 2-No treatment needed				1			1	1				1	2
Indeterminate/Unconfirmed Cause of Injury							0	1		1		2	2
Medication Error				1	1		2					0	2
Other					1		1	1	1			2	3
Property Damage						3	3					0	3
Seizure	1					1	2					0	2
Self-Injurious behavior				1			1				3	3	4
Suicide threat/plan							0			1		1	1
Totals	8	22	28	16	35	12	121	6	5	4	7	22	143

Table 5 - Effect of Incidents in the Forensic Service by Unit

	NSH							TSH					
EFFECT	51A1	51A2	51B1	51C1	51C2	51B2	Total	FB3	FB4	FC1	FC2	Total	Count
Abrasion/scrape/scratch/hematoma	1	1	4	3		2	11	1		1	1	3	14
Body System Illness				1			1					0	1
Bruise/contusion/discoloration		1	1	1			3	1	2			3	6
Edema/swelling					1		1			1	3	4	5
Epistaxis		1					1					0	1
Erythema/redness		1					1					0	1
Fracture		1		1			2					0	2
Laceration: NO sutures/staples/steri-strips			2	1	1	1	5					0	5
Laceration: with sutures/staples			1				1	1				1	2
No Injury/NA	6	17	19	24	7	13	86	2	3	2	3	10	96
Other			1				1	1				1	2
Pain, Specified				3	2		5					0	5
Seizure	1				1		2					0	2
Syncopal episode				1			1					0	1
Totals	8	22	28	35	12	16	121	6	5	4	7	22	143

Table 6 -Cause of Incidents in the Long Term Care Facility

Cause	3A	3B	5A	6A	6B	Count
Accident-Injury	4	1		4	2	11
Adverse Drug Reaction					1	1
Aggression			1	4		5
Assault, Pt./Pt	2	2	2	1	1	8
Assault, Pt./Staff				2		2
Change in Medical Status-Stabilized	1	1		1		3
Change in Medical Status-Transferred	1	3	2	1	3	10
Fall Type 1-Injury with treatment	3	2	2		1	8
Fall Type 2-No treatment needed	1		2	1	1	5
Medication Error	4	5	4	3	1	17
Other	1	3		2		6
Procedural Treatment Error			1	1		2
Property Damage			1	1		2
Seizure		1				1
Self-Injurious behavior			2	4		6
Smoking Violation			1			1
Totals	17	18	18	25	10	88

Table 7 - Effect of Incidents in the Long Term Care Facility

EFFECT	3A	3B	5A	6A	6B	Count
Abrasion/scrape/scratch/hematoma	3	3	4	4	1	15
Blister				1		1
Body System Illness				1		1
Bruise/contusion/discoloration	2	1		1	1	5
Death	1	2		1		4
Edema/swelling				1		1
Epistaxis					2	2
Erythema/redness				1		1
Fever		1				1
Fracture	1					1
Lethargy			1			1
No Injury/NA	7	8	12	14	3	44
Other	1			1		2
Pain, Specified	1		1		1	3
Respiratory Distress	1	2				3
Seizure		1				1
Skin Irritation/Rash					2	2
Totals	17	18	18	25	10	88

Act-21-Sexual Responsibility & Treatment Program at Torrance State Hospital

In July 2003, the Pennsylvania Legislature enacted Act 21 for adjudicated youth, aging out of the juvenile justice system who have a "mental abnormality" that renders them unable to control their violent sexual impulses. The Act mandates the state to provide mental health and sex-offense specific treatment to an identified population that had been adjudicated of certain sex crimes, received treatment in a juvenile program, yet remains a significant risk to sexually re-offend after reaching the age of 21, an age when oversight by the juvenile justice system typically ends. The Act requires the referral of such individuals who have committed these specific crimes to the Pennsylvania Sexual Offenders Assessment Board (SOAB) ninety days prior to their 20th birthday for purposes of determining if the individual has "serious difficulty in controlling sexually violent behavior." If so determined, a petition for a mental health hearing will be made for determination of civil commitment to the Sexual Responsibility and Treatment Program (SRTP) on the grounds of Torrance State Hospital. On July 1, 2006 the operation of this program transferred from an independent contractor to the Torrance State Hospital.

Table 8 - Cause of Incidents in the Sexual Responsibility and Treatment Program

Cause	TOR	Count
Accident-Injury	3	3
Assault, Pt./Pt	2	2
Assault, Pt./Staff	1	1
Contraband Possession	1	1
Fall Type 1-Injury with treatment	2	2
Medication Error	1	1
Other	1	1
Sexual Behavior	3	3
Totals	14	14

Table 9 - Effect of Incidents in the Sexual Responsibility and Treatment Program

Primary effect	TOR	Count
Abrasion/scrape/scratch/hematoma	1	1
Bruise/contusion/discoloration	1	1
Edema/swelling	1	1
No Injury/NA	7	7
Pain unspecified	1	1
Pain, Specified	3	3
Totals	14	14

Physical Health Measures

The National Association of State Mental Health Program Directors (NASMHPD) issued a report in October 2006 about mortality and morbidity in people with serious mental illness (SMI). According to Mental Health America's *Survey of People with Schizophrenia and Providers* (www.mentalhealthamerica.net), the NASMHPD report revealed that people with SMI die on average 25 years earlier than the general population. The major natural causes of death for people with SMI are heart disease, diabetes, respiratory disease and infectious disease. Many of the risk factors for these diseases are modifiable. Beginning June 2008, the state began compiling and comparing data on the number of tobacco users (Table 10) in our state hospitals. Beginning July 2008, the state began compiling and comparing data on the number of consumers who have a diagnosis of diabetes (Table 11).

Table 10 - Tobacco Users on Last Day of Month Civil and Long Term Care

Month	Tobacco Users	CLA	DAN	NOR	TOR	WAR	WER	Civil Total	LTC	System Total
Feb-12	Total Users	128	76	131	93	102	136	666	17	683
	% of Census	59%	45%	63%	47%	59%	51%	54%	13%	42%
May-12	Total Users	124	76	113	107	95	136	651	21	672
	% of Census	57%	44%	59%	54%	54%	51%	53%	15%	42%
Aug-12	Total Users	124	68	98	99	86	122	597	22	619
	% of Census	57%	40%	60%	50%	52%	47%	51%	16%	40%
Nov-12	Total Users	130	70	95	96	94	131	616	22	638
	% of Census	60%	41%	61%	46%	55%	50%	52%	16%	40%

Table 11 - Diabetes

Civil Hospitals								Forensic Centers			A21	LTC	Sys
Nov-12	Cla	Dan	Nor	Tor	War	Wer	Ttl	Nor	Tor	Total	A21	SMRC	
Patient Census	218	169	156	208	172	262	1185	130	91	221	35	141	1582
Count	34	30	28	49	38	65	244	11	9	20	0	45	309
% w/ Diabetes	16%	18%	18%	24%	22%	25%	21%	8%	10%	9%	0%	32%	20%

Table 12 - Reasons for Hospitalizations as the Result of an Incident, All Levels of Care

The Risk Management System requires that an incident report form be completed anytime a person is transported from a state hospital to an acute care hospital. This includes if the person was only seen in the emergency room, received diagnostic tests and/or was actually admitted. It does **not** include hospitalizations for a preplanned procedure, test or surgery.

Primary effect	CLA	DAN	NOR	SMO	TOR	WAR	WER	Count
Asphyxiation							1	1
Body System Illness	1			1		3		5
Bruise/contusion/discoloration					1			1
Death	2							2
Edema/swelling	1					1		2
Emesis	2							2
Epistaxis		1	1	1				3
Fever		1		1			1	3
Fracture			2	1		1		4
Ingestion of foreign body							4	4
Laceration: with steristrips/glue		1						1
Laceration: with sutures/staples	1		1					2
Lethargy		1		1				2
No Injury/NA					1		5	6
Other			2			1	4	7
Pain unspecified					1			1
Pain, Specified		1	3	1	1	3	3	12
Puncture/stab wound					1			1
Respiratory Distress		1	1	3	2			7
Seizure					1			1
Skin Irritation/Rash				1				1
Syncopal episode			1					1
Totals	7	6	11	10	8	9	18	69

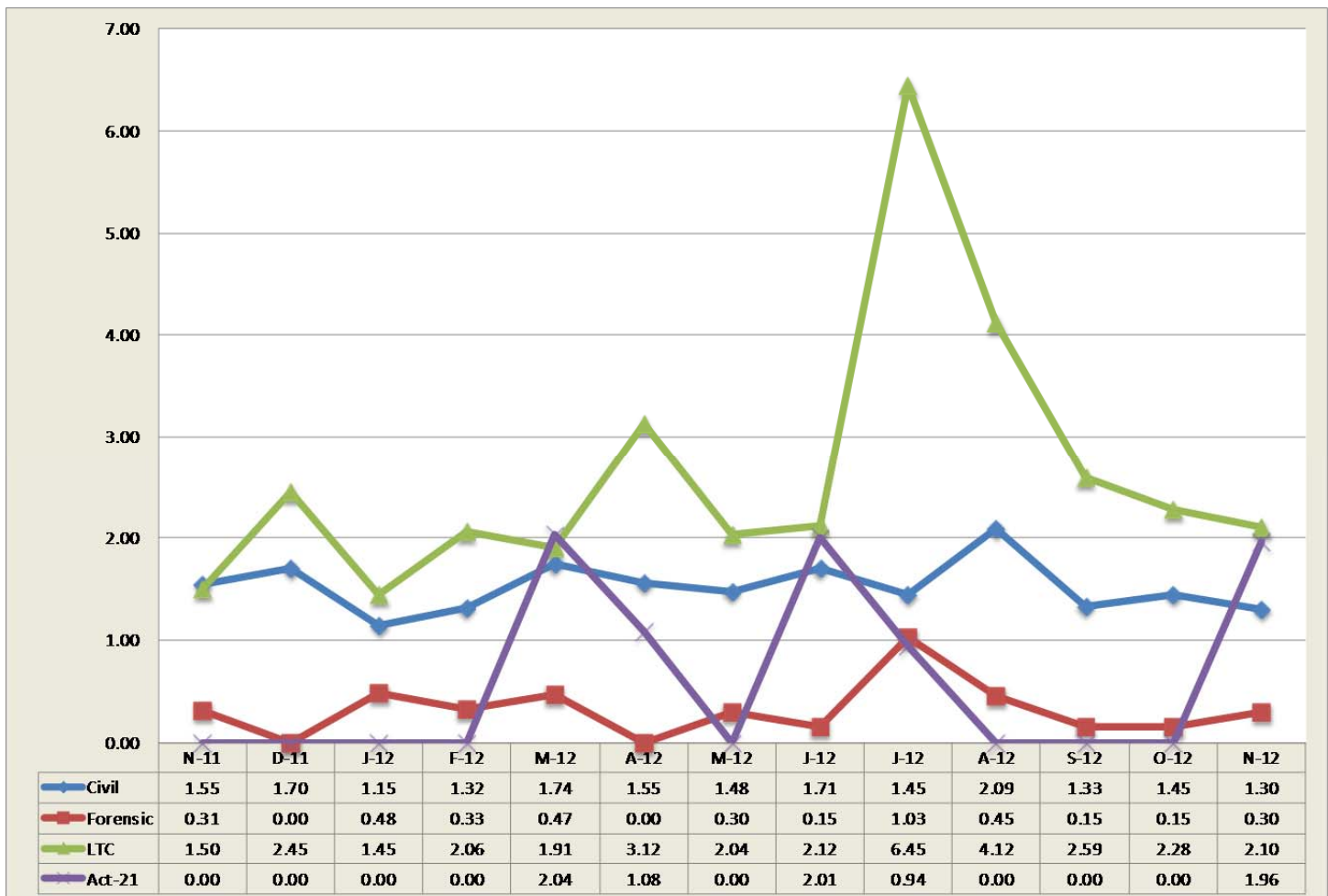
Falls

Falls within the state hospital risk management system are divided into two categories, type 1 and type 2, with the need for medical intervention or lack thereof defining the difference. The following data relates to falls, type 1 which are defined as an involuntary descent to a lower position, excluding seizures, that is witnessed or reported and requires medical intervention.

Table 13 - 13-Month Rate of Type 1 Falls Per 1,000 Days-of-Care

M/Year	Civil Hospital							Forensic			A21	LTC	Sys Avg
	Cla	Dan	Nor	Tor	War	Wer	Ttl	Nor	Tor	Total	A21	SMRC	
Nov-11	2.14	1.54	1.02	2.36	1.03	1.24	1.55	0.00	0.79	0.31	0.00	1.50	1.35
Dec-11	1.77	2.06	1.33	1.52	0.59	2.52	1.70	0.00	0.00	0.00	0.00	2.45	1.35
Jan-12	1.76	1.71	1.03	0.67	0.38	1.20	1.15	0.26	0.84	0.48	0.00	1.45	1.07
Feb-12	1.42	0.82	0.83	2.20	0.99	1.54	1.32	0.54	0.00	0.33	0.00	2.06	1.23
Mar-12	1.63	1.51	1.25	3.03	0.75	2.05	1.74	0.51	0.40	0.47	2.04	1.91	1.59
Apr-12	1.84	3.11	0.66	2.04	0.79	1.11	1.55	0.00	0.00	0.00	1.08	3.12	1.59
May-12	1.78	1.12	0.50	2.98	0.93	1.45	1.48	0.00	0.74	0.30	0.00	2.04	1.59
Jun-12	1.69	1.36	0.89	1.92	2.30	2.01	1.71	0.00	0.36	0.15	2.01	2.12	1.54
Jul-12	1.04	0.76	1.33	2.21	1.51	1.70	1.45	1.23	0.73	1.03	0.94	6.45	1.82
Aug-12	1.78	2.46	1.93	3.37	1.15	1.89	2.09	0.25	0.74	0.45	0.00	4.12	1.82
Sep-12	1.07	0.97	2.30	1.20	1.60	1.14	1.33	0.00	0.39	0.15	0.00	2.59	1.26
Oct-12	1.32	2.82	1.44	1.65	1.14	0.73	1.45	0.25	0.00	0.15	0.00	2.28	1.32
Nov-12	1.22	1.79	2.56	1.01	1.35	0.38	1.30	0.51	0.00	0.30	1.96	2.10	1.23

13-Month Trend of Type 1 Falls by Type of Care per 1,000 Days-of-Care



State Hospital Use of Seclusion

Civil and Forensic

Data on seclusion use for psychiatric reasons includes the civil and forensic populations and is reported for both monthly and yearly totals.

Table 14 - Hours of Seclusion Use, Monthly Totals for Past Year

ABV	Total	Dec_11	Jan_12	Feb_12	Mar_12	Apr_12	May_12	Jun_12	Jul_12	Aug_12	Sep_12	Oct_12	Nov_12
NOR	5.75					5.75							

Table 15 - Number of Seclusion Events, Monthly Totals for Past Year

ABV	Total	Dec_11	Jan_12	Feb_12	Mar_12	Apr_12	May_12	Jun_12	Jul_12	Aug_12	Sep_12	Oct_12	Nov_12
NOR	1	0	0	0	0	1	0	0	0	0	0	0	0

State Hospital Use of Mechanical Restraint

Civil and Forensic

Data on mechanical restraint use for psychiatric reasons includes the forensic and civil populations and is reported for both monthly and yearly totals.

Table 16 - Total Hours of Mechanical Restraint Use by Hospital and Unit In Month

ABV	WARD	Total Hrs
WER	34-4	3.50

Table 17 - Hours of Mechanical Restraint Use, Monthly Totals for Past Year

ABV	Total	Dec_11	Jan_12	Feb_12	Mar_12	Apr_12	May_12	Jun_12	Jul_12	Aug_12	Sep_12	Oct_12	Nov_12
CLA	75.20	73.40	0.00	0.80	0.00	0.00	0.00	1.00	0.00	0.00	0.00	0.00	0.00
NOR	5.12	0.25	0.50	0.00	0.87	0.50	0.00	0.00	0.00	0.50	0.00	2.50	0.00
WER	47.67	2.00	1.00	1.00	0.00	1.23	17.35	7.40	1.67	12.10	0.42	0.00	3.50

Table 18 - Number of Mechanical Restraint Events, Monthly Totals for Past Year

ABV	Total	Dec_11	Jan_12	Feb_12	Mar_12	Apr_12	May_12	Jun_12	Jul_12	Aug_12	Sep_12	Oct_12	Nov_12
CLA	4	1	0	1	0	0	0	2	0	0	0	0	0
NOR	9	1	1	0	1	2	0	0	0	1	0	3	0
WER	28	1	1	1	0	2	10	4	1	6	1	0	1

State Hospital Use of Physical Holds (Physical Restraint)

Civil and Forensic

Data on physical restraint use for psychiatric reasons includes the civil and forensic populations and is reported for both monthly and yearly totals. Physical restraint events lasting less than 60 seconds are reflected as 0.00 hours.

Table 19 - Hours of Physical Holds (Restraint) Used by Hospital & Unit

ABV	WARD	Total	ABV	WARD	Total	ABV	WARD	Total
WER	37-1	0.93	WAR	3SW	0.20	NOR	01A1	0.06
CLA	3	0.88	CLA	9	0.18	CLA	5	0.06
TOR	FB4	0.63	TOR	FC2	0.17	WER	35-2	0.06
DAN	212	0.50	TOR	011	0.17	NOR	51C1	0.05
DAN	210	0.34	WER	34-4	0.11	WAR	3NM	0.05
TOR	014	0.33	WER	37-2	0.09	WAR	3IM	0.05
TOR	061	0.33	TOR	FC1	0.08	NOR	51B1	0.05
TOR	FB3	0.32	NOR	01C1	0.07	WER	35-4	0.03
TOR	023	0.30	CLA	4	0.07	WER	37-3	0.02
NOR	10C2	0.25	CLA	6	0.07	NOR	51A1	0.02
WAR	IBE	0.22	DAN	312	0.07	WER	37-4	0.01
NOR	10A2	0.21	NOR	51A2	0.07			

Table 20 - Hours of Physical Restraint Use, Monthly Totals for Past Year

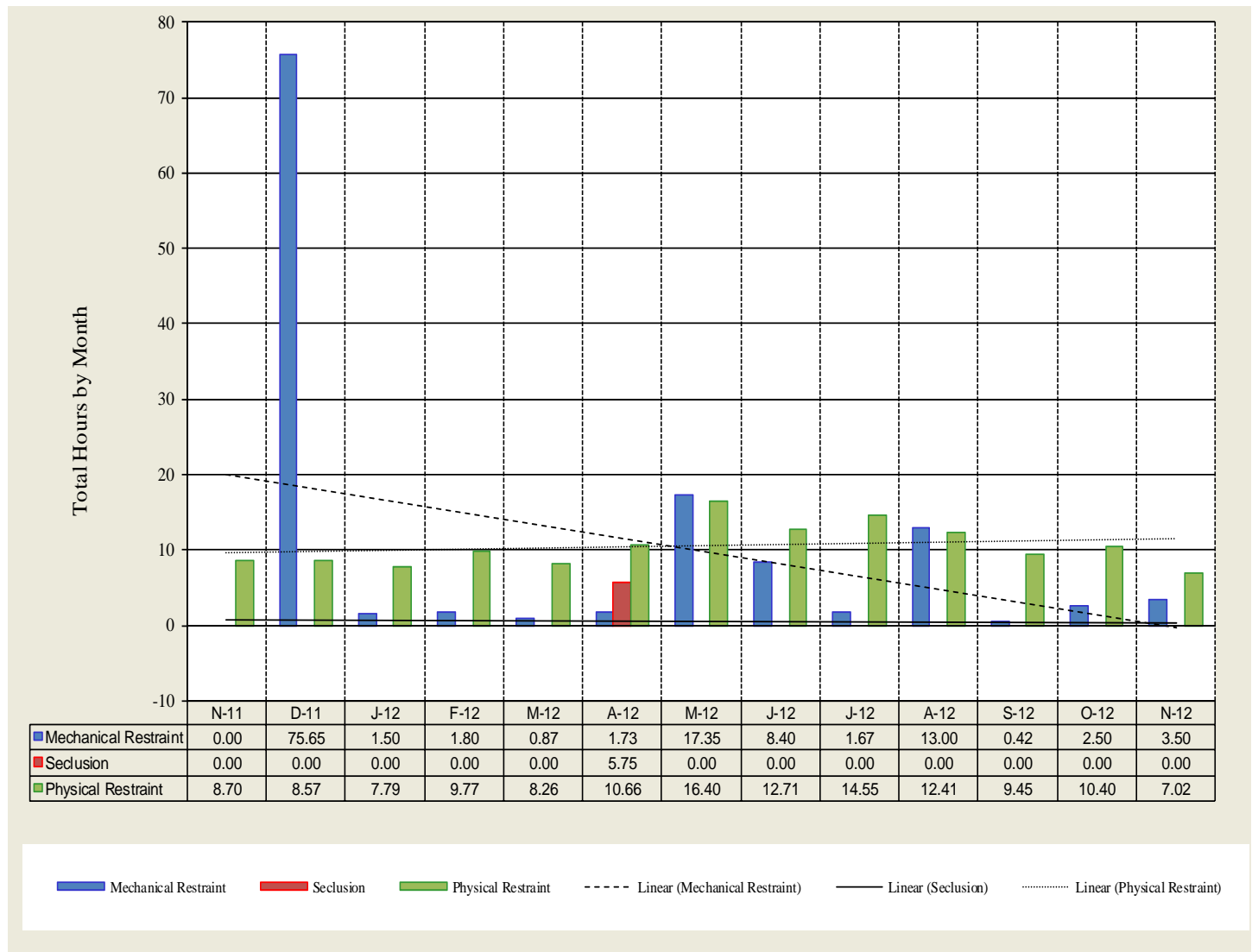
ABV	Total	Dec_11	Jan_12	Feb_12	Mar_12	Apr_12	May_12	Jun_12	Jul_12	Aug_12	Sep_12	Oct_12	Nov_12
CLA	18.00	1.65	1.34	2.38	1.42	1.50	2.05	2.07	0.43	0.70	1.33	1.88	1.25
DAN	17.44	0.88	0.31	2.30	2.76	1.39	1.15	0.76	3.92	1.47	0.50	1.08	0.91
NOR	9.25	0.60	0.39	0.40	0.38	1.83	0.64	0.40	0.89	1.11	0.59	1.25	0.77
TOR	34.63	4.85	4.33	4.08	2.85	1.10	1.45	2.67	1.05	2.74	3.97	3.21	2.33
WAR	15.80	0.00	0.60	0.43	0.13	0.45	4.57	3.72	2.33	0.33	0.57	2.15	0.52
WER	35.28	0.59	1.04	0.46	0.72	4.39	6.58	3.10	6.52	6.09	2.64	1.89	1.24

Table 21 - Number of Physical Restraint Events, Monthly Totals for Past Year

ABV	Total	Dec_11	Jan_12	Feb_12	Mar_12	Apr_12	May_12	Jun_12	Jul_12	Aug_12	Sep_12	Oct_12	Nov_12
CLA	213	13	17	31	16	14	16	27	7	10	20	22	20
DAN	221	12	10	21	30	22	20	10	27	17	12	25	15
NOR	294	17	10	12	18	47	22	24	41	26	17	33	27
TOR	210	30	23	20	21	9	9	10	9	21	16	30	12
WAR	87	0	7	4	1	6	21	14	12	6	4	7	5
WER	247	9	17	13	12	26	33	24	38	27	16	12	20

13-Month Trend of Mechanical Restraint, Physical Restraint and Seclusion Use

The following table represents the total hours of mechanical restraint use, physical restraint use and seclusion use for last 12 month period. This data includes the forensic and civil populations with the data being reported to the second and expressed below as a percentage of an hour.



Medication Measures

Beginning in September 2008 the OMHSAS Bureau of Community and Hospital Operations identified the following three medication measures for inclusion in this monthly report. The table information is compiled from the QS1 pharmacy software and reflects the unique count of the number of people served at each hospital on the last day of the month for each measure.

Table 22 - Benzodiazepines

Measure Definition: *Benzodiazepines refers to the number of unique patients served at each hospital, by level-of-care, who have an active, straight order for any benzodiazepine medication on the last day of each month.*

BZD								Forensic			SRTP	Sys
M/Y	Cla	Dan	Nor	Tor	War	Wer	Total	Nor	Tor	Cnt	Tor	Total
Feb-12	150	104	117	91	98	144	704	39	12	51	6	761
May-12	151	88	111	86	96	149	681	38	10	48	4	733
Aug-12	153	97	97	89	102	151	689	48	16	64	5	758
Nov-12	150	87	92	91	99	151	670	48	13	61	5	736

Table 23 - Multiple Atypicals

Measure Definition: *Multiple Atypicals refers to the number of unique patients served at each hospital, by level-of-care, who have an active, straight order for two or more atypical antipsychotic medications on the last day of each month.*

Multiple Atypicals								Forensic			SRTP	Sys
M/Y	Cla	Dan	Nor	Tor	War	Wer	Total	Nor	Tor	Cnt	Tor	Total
Feb-12	11	44	21	35	43	27	181	4	20	24	0	205
May-12	10	37	25	45	35	22	174	7	9	16	0	190
Aug-12	14	39	15	55	30	25	178	7	7	14	0	192
Nov-12	10	37	14	49	40	23	173	3	3	6	0	179

Table 24 - Typical-Atypical

Measure Definition: *Typical-Atypicals refers to the number of unique patients served at each hospital, by level-of-care, who have an active, straight order for a typical and an atypical antipsychotic medication on the last day of each month.*

Typical - Atypical								Forensic			SRTP	Sys
M/Y	Cla	Dan	Nor	Tor	War	Wer	Total	Nor	Tor	Cnt	Tor	Total
Feb-12	56	36	102	70	49	116	429	24	20	44	0	473
May-12	60	45	97	73	47	121	443	27	12	39	0	482
Aug-12	56	46	88	73	45	119	427	28	14	42	0	469
Nov-12	63	68	88	63	43	120	445	28	18	46	0	491

Assaults

Assaults within the state hospital system are defined as any aggressive act by a patient, involving physical contact that may or may not result in injury. Assaults can be directed at a peer, staff or any other individual. The system was designed to require an incident report (form SI-815) on any patient involved in a physical altercation regardless of who may have started the assault. Therefore, every patient-to-patient altercation will result in at least two incident reports.

Table 25 - Patient-to-Patient Assaults by Unit, All Levels of Care

ABV	WARD	Cnt	ABV	WARD	Cnt	ABV	WARD	Cnt	ABV	WARD	Cnt
NOR	51C1	22	CLA	5	8	CLA	3	4	TOR	FC1	2
NOR	10A2	22	WER	37-4	8	TOR	022	4	TOR	FC2	2
NOR	51B1	19	WER	35-4	8	NOR	51C2	3	WER	37-3	2
NOR	51A2	16	TOR	013	8	CLA	2	3	SMO	6B	1
CLA	4	13	NOR	01A1	7	WER	34-4	3	WAR	3SW	1
WER	37-2	12	WAR	3NM	7	DAN	310	2	WAR	IBE	1
DAN	210	12	CLA	6	6	SMO	5A	2	SMO	6A	1
WER	34-2	12	WER	35-3	6	NOR	10C2	2			
WAR	3IM	12	TOR	023	6	SMO	3A	2			
DAN	312	12	WAR	2SW	5	SMO	3B	2			
NOR	09AF	11	NOR	51A1	5	TOR	011	2			
WER	35-2	9	CLA	9	5	TOR	014	2			
NOR	01C1	9	NOR	51B2	4	TOR	024	2			
DAN	212	8	DAN	211	4	TOR	062	2			

Table 26 - Rate of Patient-to-Patient Assaults Events with Patient Injury per 1,000 Days-of-Care

	Civil							Forensic			S RTP
Pt.-to-Pt. Assault w/ any Injury	Cla	Dan	Nor	Tor	War	Wer	Tot.	Nor	Tor	Tot.	S RTP
Nov-11	1.99	0.77	2.62	2.36	1.03	1.37	1.74	2.26	3.16	2.61	1.24
Dec-11	0.74	2.06	4.28	2.20	0.59	1.68	1.96	4.85	2.39	3.89	0.00
Jan-12	1.62	1.14	5.32	1.33	1.35	1.68	2.14	3.83	0.84	2.71	0.00
Feb-12	2.06	1.65	1.82	1.28	0.99	0.64	1.38	4.57	1.74	3.39	0.00
Mar-12	0.59	3.40	2.51	0.34	0.93	2.53	1.74	5.11	1.21	3.60	2.04
Apr-12	1.53	1.36	1.82	0.51	0.59	1.73	1.31	3.37	0.41	2.23	1.08
May-12	0.59	3.37	3.16	0.99	1.30	1.33	1.72	5.73	1.10	3.86	0.00
Jun-12	1.38	2.13	2.85	1.40	0.77	1.75	1.71	7.93	1.81	5.39	2.04
Jul-12	0.30	1.52	0.57	1.19	0.94	0.85	0.87	8.58	0.36	5.28	0.00
Aug-12	1.04	1.52	2.89	1.18	0.58	1.01	1.32	7.44	2.61	5.51	0.92
Sep-12	1.07	2.52	2.71	1.88	0.60	1.77	1.73	5.89	1.18	4.02	0.00
Oct-12	1.17	1.69	1.85	0.49	0.38	1.46	1.18	7.85	0.39	4.95	0.00
Nov-12	2.90	1.59	2.56	0.67	1.35	1.14	1.67	6.09	0.75	3.93	0.98

Table 27 - Patient-to-Staff Assault Events by Unit, All Levels of Care

ABV	WARD	Cnt	ABV	WARD	Cnt	ABV	WARD	Cnt
NOR	10A2	5	DAN	210	2	NOR	51A2	1
WER	37-4	5	CLA	6	2	TOR	012	1
WAR	3IM	4	CLA	2	2	NOR	51B2	1
NOR	10C2	3	NOR	51B1	2	DAN	212	1
WAR	3NM	3	WAR	3SW	2	WER	35-4	1
NOR	51C1	3	WER	37-2	2	WER	37-1	1
WER	34-2	3	WER	34-4	2	CLA	9	1
DAN	312	3	SMO	6A	2	TOR	011	1
DAN	311	2	TOR	023	2	CLA	4	1
DAN	310	2	TOR	022	1	CLA	3	1
DAN	211	2	TOR	021	1	TOR	FB3	1
NOR	01A1	2	NOR	01C1	1			
NOR	09AF	2	TOR	061	1			

Table 28 - Rate of Patient-to-Staff Assault Events with Injury to Staff per 1,000 Days-of-Care

	Civil							Forensic			S RTP
Pt/Staff Assault w/ Staff Inj per 1K days	Cla	Dan	Nor	Tor	War	Wer	Tot.	Nor	Tor	Tot.	S RTP
Nov-11	0.15	0.58	0.58	0.84	0.00	1.24	0.61	1.50	0.39	1.07	0.00
Dec-11	0.44	0.93	0.59	0.17	0.20	0.72	0.52	1.28	0.40	0.93	1.11
Jan-12	0.15	0.57	0.74	0.17	0.19	0.12	0.31	0.77	0.00	0.48	1.07
Feb-12	0.16	1.44	0.99	0.18	0.79	0.77	0.70	1.08	0.00	0.67	0.00
Mar-12	0.30	2.45	0.16	0.00	0.37	1.57	0.82	1.28	0.81	1.09	0.00
Apr-12	0.46	2.14	0.33	0.34	0.59	0.74	0.74	5.19	0.41	3.34	1.08
May-12	0.59	1.50	0.83	0.99	1.12	1.21	1.03	0.50	0.00	0.30	0.00
Jun-12	0.77	0.19	0.36	1.40	0.19	1.63	0.83	0.51	0.36	0.45	0.00
Jul-12	0.59	0.76	0.57	0.51	0.00	1.95	0.82	1.47	0.36	1.03	0.00
Aug-12	0.44	1.14	0.58	1.35	0.96	2.27	1.18	0.50	0.00	0.30	0.00
Sep-12	0.46	0.97	2.09	1.20	1.60	0.88	1.13	1.02	0.00	0.62	0.95
Oct-12	0.15	0.38	1.65	0.16	0.00	0.85	0.52	2.21	0.77	1.65	0.00
Nov-12	0.31	1.39	1.28	0.51	0.19	0.51	0.68	1.27	0.37	0.91	0.98