



State Hospital Risk Management Summary Report For May 2011

Prepared by: John Deegan, M.S.
William Steinmetz

Contributors:
SMH Chief Improvement Executives & PI Staff
Valerie Minnich, RPh.

E-mail: jdeegan@state.pa.us
PA DPW, Bureau of Community & Hospital Operations
June 24, 2011

On the Internet: <http://www.dpw.state.pa.us/publications/forproviders/statehospitalriskmanagementsummaryreports/index.htm>

Introduction

The State Hospital Risk Management System defines an incident as any patient-related event that has the potential for, or which results in, a negative impact upon the quality of patient care or services, including injury or death of a person served in the state hospital system.

The data dictionary for the measurement system was updated on October 1, 2008, and is available for review as attachments to OMHSAS Bulletin titled Management of Incidents: SI-815 Incident Reporting and Risk Management Policy and Procedural Change. (Available via bulletin search at <http://www.dpw.state.pa.us> .)

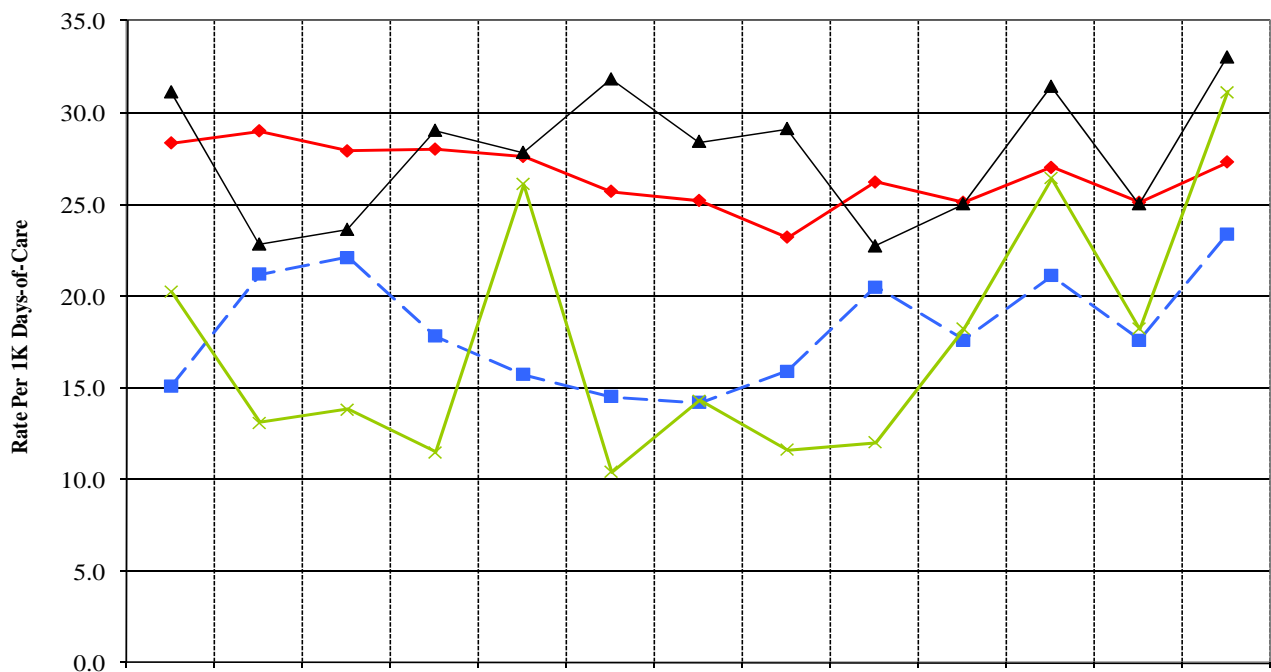
<i>Table of Contents</i>		
<i>Indicator/Measure</i>	<i>Table</i>	<i>Page</i>
<i>Census and Rates of Incidents</i>	<i>1</i>	<i>3</i>
<i>Thirteen-Month Trend of Incidents</i>		<i>3</i>
<i>Six-Month Summary of Selected Events</i>		<i>4</i>
<i>Category or Cause of Incidents: Civil</i>	<i>2</i>	<i>5</i>
<i>Primary Effect of Incidents: Civil</i>	<i>3</i>	<i>6</i>
<i>Category or Cause of Incidents: Forensic</i>	<i>4</i>	<i>7</i>
<i>Effect of Incidents: Forensic</i>	<i>5</i>	<i>7</i>
<i>Cause of Incidents: Long Term Care</i>	<i>6</i>	<i>8</i>
<i>Effect of Incidents: Long Term Care</i>	<i>7</i>	<i>8</i>
<i>Cause of Incidents: SRTP</i>	<i>8</i>	<i>9</i>
<i>Effect of Incidents: SRTP</i>	<i>9</i>	<i>9</i>
<i>Tobacco Users</i>	<i>10</i>	<i>10</i>
<i>Diabetes</i>	<i>11</i>	<i>10</i>
<i>Reasons for Hospitalization as a Result of an Incident</i>	<i>12</i>	<i>10</i>
<i>13-Month Rate of Type 1 Falls per 1,000 Days of Care</i>	<i>13</i>	<i>11</i>
<i>13-Month Trend of Type 1 Falls</i>		<i>11</i>
<i>Hours of Seclusion Use</i>	<i>14</i>	<i>12</i>
<i>Number of Seclusion Events</i>	<i>15</i>	<i>12</i>
<i>Total Hours of Mechanical Restraint by Unit</i>	<i>16</i>	<i>12</i>
<i>Hours of Mechanical Restraint Use: 12 Months</i>	<i>17</i>	<i>12</i>
<i>Number of Mechanical Restraint Events: 12 Months</i>	<i>18</i>	<i>12</i>
<i>Hours of Physical Restraint Use by Unit</i>	<i>19</i>	<i>13</i>
<i>Hours of Physical Restraint Use: 12 Months</i>	<i>20</i>	<i>13</i>
<i>Number of Physical Restraint Events: 12 Months</i>	<i>21</i>	<i>13</i>
<i>24-Month Trend of Restraint and Seclusion Hours</i>		<i>14</i>
<i>Benzodiazepines</i>	<i>22</i>	<i>15</i>
<i>Multiple Atypicals</i>	<i>23</i>	<i>15</i>
<i>Typical-Atypical</i>	<i>24</i>	<i>15</i>
<i>Patient-to-Patient Assaults by Unit</i>	<i>25</i>	<i>16</i>
<i>13-Month Rate of Patient-to-Patient Assault Events with Injury per 1,000 Days-of-Care</i>	<i>26</i>	<i>16</i>
<i>Patient-to-Staff Assaults by Unit</i>	<i>27</i>	<i>17</i>
<i>13-Month Rate of Patient-to-Staff Assaults with Injury to Staff per 1,000 Days-of-Care</i>	<i>28</i>	<i>17</i>

During **May** a total of 1351 incident reports were completed by the state hospital system. Additional records addressing specific categories from the previous month were included on page 4 of this report. Other tables in this report may include additional NRI events regarding these incident reports. The following is a breakdown of incidents by individual facility and type of care:

Table 1 - Number of Incident Reports

Civil	Census 5/31/11	Days Provided	Incidents	Per 1000 Days-of-Care
Clarks Summit	220	6832	110	16.1
Danville	169	5233	137	26.2
Norristown	214	6647	198	29.8
Torrance	209	6173	211	34.2
Warren	167	5233	131	25.0
Wernersville	270	8418	266	31.6
Total Civil	1249	38536	1053	27.3
Forensic				
Norristown	134	4081	108	26.5
Torrance	81	2470	45	18.2
Total Forensic	215	6551	153	23.4
Act 21				
Act 21	27	837	11	13.1
Total Act 21	27	837	11	13.1
Long Term Care				
South Mountain	131	4065	134	33.0
Total L. T. C.	131	4065	134	33.0
Total	1622	49989	1351	27.0

Thirteen-Month Trend of Incidents by Type of Care per 1,000 Days of Care



	May-10	Jun-10	Jul-10	Aug-10	Sep-10	Oct-10	Nov-10	Dec-10	Jan-11	Feb-11	Mar-11	Apr-11	May-11
—◆— Civil	28.3	29	27.9	28	27.6	25.7	25.2	23.2	26.2	25.1	27.0	25.1	27.3
—■— Forensic	15.1	21.2	22.1	17.8	15.7	14.5	14.2	15.9	20.5	17.6	21.1	17.6	23.4
—▲— Long Term Care	31.1	22.8	23.6	29	27.8	31.8	28.4	29.1	22.7	25.0	31.4	25.0	33.0
—x— Act 21	20.2	13.1	13.8	11.5	26.1	10.4	14.3	11.6	12.0	18.2	26.4	18.2	31.1

Number of Incident Reports – Selected Categories – Recent Six Month Period

***Note:** Rules regarding the reporting of incidents involving patient-to-patient assaults require a separate incident report form on each person involved in an altercation. This includes both the aggressor, when known and any other person involved. The numbers reported above reflect the monthly, total number of SI-815 reports coded as Patient-to-Patient Assaults and not the actual number of altercations.

This table is updated/refreshed each month from the most recent data (six month period) available from the State Hospital System RM database.

CATEGORY	Count	Dec_10	Jan_11	Feb_11	Mar_11	Apr_11	May_11
Accident-Injury	244	44	37	44	47	36	36
Adverse Drug Reaction	35	9	7	2	7	4	6
Aggression	968	163	133	126	201	180	165
Aggression Type 2/Early Medication Order	1				1		
Airway Obstruction type 1 Intervention	16		5	1	2	4	4
Airway Obstruction type 2 No Intervention	21	8	3	4	2	2	2
Alleged Nonconsensual Sexual Activity	19	6	2	4	1	4	2
Alleged Pt. Abuse	62	13	8	11	17	6	7
Assault, Pt./Pt	1736	244	321	227	314	274	356
Assault, Pt./Staff	528	93	78	78	100	87	92
AWOL/UA	82	14	4	18	12	13	21
AWOL-Attempt	32	5	6	6	8	1	6
AWOL-Late	54	6	2	7	12	13	14
Change in Medical Status-Stabilized	97	18	17	14	12	15	21
Change in Medical Status-Transferred	399	69	72	64	69	65	60
Charged post admit/crime committed prior to admit	5		1	1	1	1	1
Charged with alleged crime on hospital grounds	14	5	3		3	1	2
Communications Sys. Misuse	16	1	3	5	2	1	4
Community Incident	31	3	8	5	4	6	5
Contraband Possession	116	26	27	7	16	19	21
Fall Type 1-Injury with treatment	435	81	69	59	75	83	68
Fall Type 2-No treatment needed	636	109	122	86	109	107	103
Family Concern	32	9	7	3	3	6	4
Fire Setting	2	2					
Illicit Substance Use/Possession	8	3		3		1	1
Medication Error	184	26	35	38	32	30	23
Missing Property	76	11	13	10	17	13	12
Procedural Treatment Error	35	3	5	5	5	8	9
Property Damage	82	20	14	12	12	15	9
Seizure	31	1	6	6	7	6	5
Self-Injurious behavior	646	109	107	101	98	104	127
Sexual Behavior	131	17	30	31	18	11	24
Smoking Violation	138	46	18	16	14	25	19
Substantiated Nonconsensual Sexual Activity	3	1		2			
Substantiated Patient Abuse	7		3	1	1	2	
Suicide Attempt	12		4	1		1	6
Suicide threat/plan	62	5	9	11	15	13	9
Unsubstantiated Nonconsensual Sexual Activity	8		2		6		
Unsubstantiated Patient Abuse	22	7	6	3	2	4	

Cause and Effect of Incidents in the Civil Hospitals

Table 2 reflects the actual number of incidents by category or cause and facility for people served in the civil hospitals only. Table 3 reflects these same numbers but by incident effect.

Table 2 - Category or Cause of Incidents in the Civil Hospitals

Primary Cat #	CLA	DAN	NOR	TOR	WAR	WER	Count
Accident-Injury	3	2	3	8	2	1	19
Adverse Drug Reaction	2		2			1	5
Aggression	8	7	30	23	28	28	124
Airway Obstruction type 1 Intervention		1	2	1			4
Airway Obstruction type 2 No Intervention		1				1	2
Alcohol Use/Possession/Suspected or Confirmed				1			1
Alleged Nonconsensual Sexual Activity					2		2
Alleged Pt. Abuse	1		3		1	2	7
Assault, Pt./Pt	31	44	58	39	15	52	239
Assault, Pt./Staff	13	11	9	4	12	21	70
AWOL/UA	3		3	5	3	7	21
AWOL-Attempt			1	3		2	6
AWOL-Late		1	1		6	6	14
Change in Medical Status-Stabilized	1		12	3			16
Change in Medical Status-Transferred	5	3	13	11	3	15	50
Charged post admit/crime committed prior to admit	1						1
Charged with alleged crime on hospital grounds		2					2
Communications Sys. Misuse		1		2		1	4
Community Incident	3			1	1		5
Contraband Possession	2	4	1	3	8	3	21
Fall Type 1-Injury with treatment	13	7	10	8	4	13	55
Fall Type 2-No treatment needed	9	11	7	26	8	30	91
Family Concern		1	1	2			4
Illicit Substance Use/Possession					1		1
Indeterminate/Unconfirmed Cause of Injury	6	3	12	3		5	29
Medication Error	1		5			1	7
Missing Property				8	1	3	12
Other	3	3	5	11	13	19	54
Procedural Treatment Error		2		1		4	7
Property Damage	1	4	2				7
Seizure		1				4	5
Self-Injurious behavior	2	20	5	19	11	40	97
Sexual Behavior		2		16	2	2	22
Smoking Violation		1	7	8	3		19
Suicide Attempt		4	1		1		6
Suicide threat/plan	2	1	1	2	1	1	8
Theft			4	3	4	4	15
Unknown					1		1
Totals	110	137	198	211	131	266	1053

Table 3 - Primary Effect of Incidents in the Civil Hospitals

Primary effect	CLA	DAN	NOR	TOR	WAR	WER	Count
Abrasion/scrape/scratch/hematoma	17	21	13	16	4	17	88
Bite-Human	2						2
Bite-Insect			1	1			2
Blister	1		1				2
Body System Illness	1		4	6	2	9	22
Bruise/contusion/discoloration	5	1	7	6	4	12	35
Burn/Scald	2				1		3
Cellulitis				2			2
Damaged or lost tooth		1	1				2
Death				1		3	4
Edema/swelling	3	1	6	4	2		16
Emesis	1		2			1	4
Epistaxis	1			1	1		3
Erythema/redness	2	1	4	11	1	1	20
Fever	1					1	2
Fracture	2	1	1				4
Ingestion of foreign body			1	3		13	17
Laceration: NO sutures/staples/steri-strips	3	1	1	2		2	9
Laceration: with steristrips/glue			1		3		4
Laceration: with sutures/staples			2		2	2	6
Lethargy	1		4	1	1		7
Muscle pull/strain/sprain				2			2
No Injury/NA	62	108	122	146	104	188	730
Other	1	1	5	5	2	5	19
Pain unspecified					1		1
Pain, Specified	2	1	19	2	3	6	33
Respiratory Distress	1		1			2	4
Seizure						4	4
Skin Irritation/Rash			1	1			2
Sunburn	1						1
Unconscious/Unresponsive	1		1	1			3
Totals	110	137	198	211	131	266	1053

Table 4 - Cause and Effect of Incidents in the Forensic Units Category or Cause of Incidents in the Forensic Service by Unit

Primary Cat #	51A1	51A2	51B1	51B2	51C1	51C2	FB3	FB4	FC1	FC2	Count
Accident-Injury		2									2
Adverse Drug Reaction				1							1
Aggression	1	3	3	1	3	8	1	3	1		24
Assault, Pt./Pt	3	2	17	4	27	14		4	4		75
Assault, Pt./Staff	2		3	1	1	1		1	2	2	13
Change in Medical Status-Stabilized	1										1
Change in Medical Status-Transferred	1	1	1						1		4
Fall Type 1-Injury with treatment	1			1					2		4
Fall Type 2-No treatment needed			1								1
Medication Error								1			1
Other	1								1		2
Self-Injurious behavior	1	1			1			20	1		24
Suicide threat/plan									1		1
Totals	11	9	25	8	32	23	1	29	13	2	153

Table 5 - Effect of Incidents in the Forensic Service by Unit

EFFECT	51A1	51A2	51B1	51C1	51C2	51B2	FB3	FB4	FC1	FC2	Count
Abrasion/scrape/scratch/hematoma			1	5				8	3	1	18
Body System Illness	1	1									2
Bruise/contusion/discoloration		1	1		1	1					4
Cellulitis									1		1
Edema/swelling	1		1	2		1		1			6
Emesis								1			1
Erythema/redness		1	1	2	2			1	1		8
Ingestion of foreign body								3			3
Laceration: NO sutures/staples/steri-strips		1		1					1		3
Laceration: with steristrips/glue									1		1
Laceration: with sutures/staples				1							1
No Injury/NA	7	4	19	20	20	5	1	15	5	1	97
Other						1					1
Pain, Specified	2	1	2	1							6
Sunburn									1		1
Totals	11	9	25	32	23	8	1	29	13	2	153

Table 6 -Cause of Incidents in the Long Term Care Facility

Cause	3A	3B	5A	6A	6B	Count
Accident-Injury		4	3	4	2	13
Aggression	5		1	3	2	11
Assault, Pt./Pt	4	10	20		6	40
Assault, Pt./Staff		2	1	2		5
Change in Medical Status-Stabilized		2		1	1	4
Change in Medical Status-Transferred	2	1			1	4
Fall Type 1-Injury with treatment	2		4			6
Fall Type 2-No treatment needed	2		2		4	8
Medication Error	4	4	2	2	3	15
Near Fall		1				1
Other	4	5	5		5	19
Procedural Treatment Error				2		2
Property Damage		1		1		2
Self-Injurious behavior				3	1	4
Totals	23	30	38	18	25	134

Table 7 - Effect of Incidents in the Long Term Care Facility

EFFECT	3A	3B	5A	6A	6B	Count
Abrasion/scrape/scratch/hematoma		5	3	5	4	17
Body System Illness					1	1
Bruise/contusion/discoloration	2	3	5	1	1	12
Death			1		3	4
Edema/swelling		1				1
Erythema/redness		1				1
Laceration: with steristrips/glue			1			1
No Injury/NA	17	19	26	9	16	87
Other			1	1		2
Pain, Specified	4		1			5
Respiratory Distress		1				1
Skin Irritation/Rash				1		1
Unconscious/Unresponsive				1		1
Totals	23	30	38	18	25	134

Act-21-Sexual Responsibility & Treatment Program at Torrance State Hospital

In August 2003, the Pennsylvania Legislature enacted Act 21 for adjudicated youth, aging out of the juvenile justice system who have a "mental abnormality" that renders them unable to control their violent sexual impulses. The Act mandates the state to provide mental health and sex-offense specific treatment to an identified population that had been adjudicated of certain sex crimes, received treatment in a juvenile program, yet remains a significant risk to sexually re-offend after reaching the age of 21, an age when oversight by the juvenile justice system typically ends. The Act requires the referral of such individuals who have committed these specific crimes to the Pennsylvania Sexual Offenders Assessment Board (SOAB) ninety days prior to their 20th birthday for purposes of determining if the individual has "serious difficulty in controlling sexually violent behavior." If so determined, a petition for a mental health hearing will be made for determination of civil commitment to the Sexual Responsibility and Treatment Program (SRTP) on the grounds of Torrance State Hospital. On July 1, 2006 the operation of this program transferred from an independent contractor to the Torrance State Hospital.

Table 8 - Cause of Incidents in the Sexual Responsibility and Treatment Program

Cause	TOR	Count
Accident-Injury	1	1
Aggression	3	3
Assault, Pt./Pt	2	2
Indeterminate/Unconfirmed Cause of Injury	2	2
Self-Injurious behavior	2	2
Sexual Behavior	1	1
Totals	11	11

Table 9 - Effect of Incidents in the Sexual Responsibility and Treatment Program

Primary effect	TOR	Count
Abrasion/scrape/scratch/hematoma	1	1
Bite-Insect	1	1
Edema/swelling	1	1
No Injury/NA	5	5
Pain, Specified	1	1
Skin Irritation/Rash	2	2
Totals	11	11

Physical Health Measures

The National Association of State Mental Health Program Directors (NASMHPD) issued a report in October 2006 about mortality and morbidity in people with serious mental illness (SMI). According to Mental Health America's *Survey of People with Schizophrenia and Providers* (www.mentalhealthamerica.net), the NASMHPD report revealed that people with SMI die on average 25 years earlier than the general population. The major natural causes of death for people with SMI are heart disease, diabetes, respiratory disease and infectious disease. Many of the risk factors for these diseases are modifiable. Beginning June 2008, the state began compiling and comparing data on the number of tobacco users (Table 10) in our state hospitals. Beginning July 2008, the state began compiling and comparing data on the number of consumers who have a diagnosis of diabetes (Table 11).

Table 10 - Tobacco Users on Last Day of Month Civil and Long Term Care

Date	Tobacco Users	CLA	DAN	NOR	TOR	WAR	WER	Civil Total	LTC	System Total
Aug-10	Total Users	139	81	136	97	91	155	699	23	722
	% of Census	63%	46%	60%	48%	55%	59%	53%	17%	50%
Nov-10	Total Users	135	78	145	103	73	153	687	17	704
	% of Census	61%	45%	64%	51%	44%	57%	55%	13%	51%
Feb-11	Total Users	129	68	131	111	85	150	674	18	692
	Census	59%	40%	58%	54%	51%	55%	54%	14%	50%
May-11	Total Users	106	72	135	111	90	143	657	19	676
	% of Census	48%	43%	63%	53%	54%	53%	53%	15%	42%

Table 11 - Diabetes

Civil Hospitals								Forensic Centers			A21	LTC	Sys
May-11	Cla	Dan	Nor	Tor	War	Wer	Ttl	Nor	Tor	Total	A21	SMRC	
Patient Census	220	169	214	209	167	270	1249	134	81	215	27	131	1622
Count	33	31	54	46	30	60	254	7	8	15	0	40	309
% w/ Diabetes	15%	18%	25%	22%	18%	22%	20%	5%	10%	7%	0%	31%	19%

Table 12 - Reasons for Hospitalizations as the Result of an Incident, All Levels of Care

The Risk Management System requires that an incident report form be completed anytime a person is transported from a state hospital to an acute care hospital. This includes if the person was only seen in the emergency room, received diagnostic tests and/or was actually admitted. It does **not** include hospitalizations for a preplanned procedure, test or surgery. Table 12 provides detail on the reasons for an acute care hospitalization during this report period.

Cause	CLA	DAN	NOR	SMO	TOR	WAR	WER	Count
Adverse Drug Reaction	1							1
Alleged Nonconsensual Sexual Activity						1		1
Assault, Pt./Pt			3			2		5
Assault, Pt./Staff						1		1
Change in Medical Status-Transferred	5	1	15	4	9	3	13	50
Community Incident	1							1
Fall Type 1-Injury with treatment			2	2				4
Fall Type 2-No treatment needed							1	1
Indeterminate/Unconfirmed Cause of Injury			1					1
Other					1			1
Seizure							1	1
Self-Injurious behavior			1		3	2	8	14
Unknown						1		1
Totals	7	1	22	6	13	10	23	82

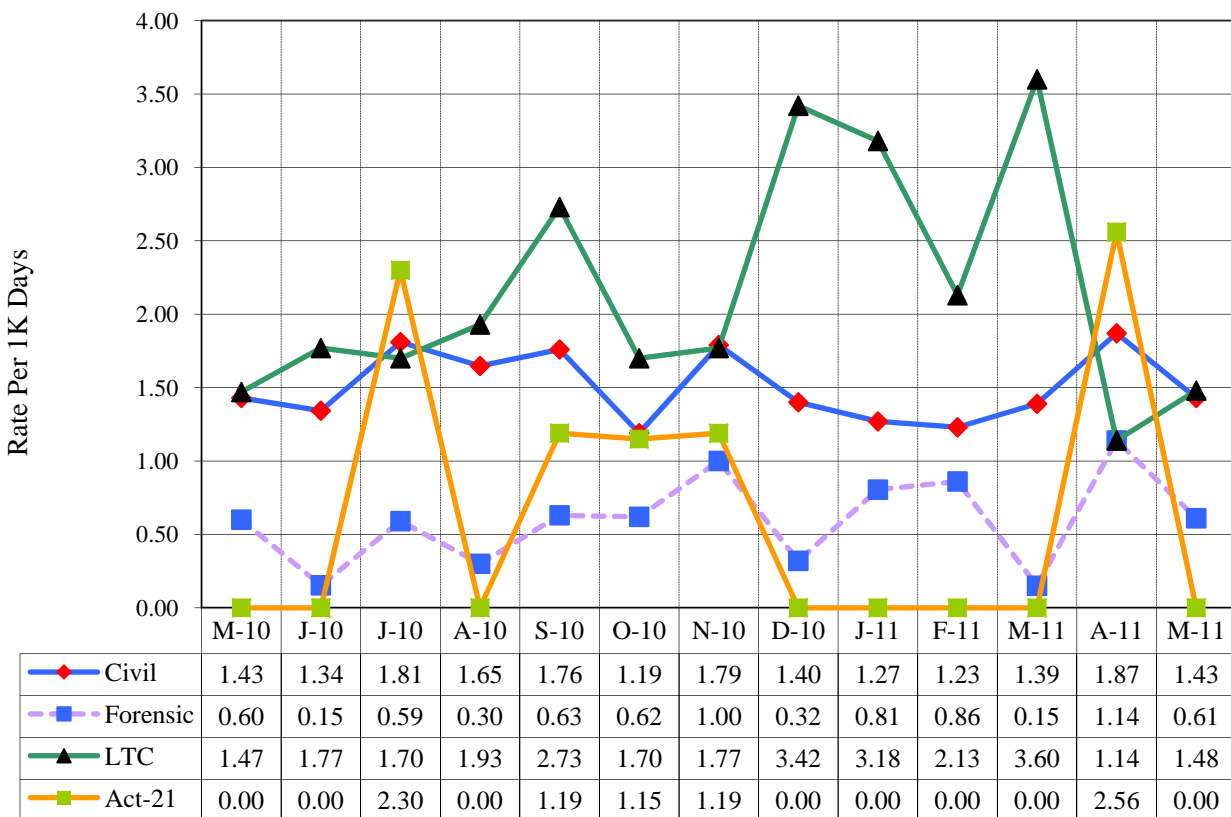
Falls

Falls within the state hospital risk management system are divided into two categories, type 1 and type 2, with the need for medical intervention or lack thereof defining the difference. The following data relates to falls, type 1 which are defined as an involuntary descent to a lower position, excluding seizures, that is witnessed or reported and requires medical intervention.

Table 13 - 13-Month Rate of Type 1 Falls Per 1,000 Days-of-Care

M/Year	Civil Hospital							Forensic Center			A21	LTC	Sys Avg
	Cla	Dan	Nor	Tor	War	Wer	Ttl	Nor	Tor	Total	A21	SMRC	
May-10	1.46	1.32	0.87	2.13	1.42	1.76	1.43	0.49	1.11	0.60	0.00	1.47	1.59
Jun-10	1.81	1.55	1.63	1.75	0.41	1.04	1.34	0.00	0.56	0.15	0.00	1.77	1.65
Jul-10	2.33	1.47	0.87	3.46	1.37	0.99	1.81	0.74	0.00	0.59	2.30	1.70	1.65
Aug-10	1.75	2.18	0.86	3.27	0.59	1.58	1.65	0.49	0.00	0.30	0.00	1.93	1.47
Sep-10	1.66	1.90	1.32	3.07	0.99	1.76	1.76	1.01	0.00	0.63	1.19	2.73	1.67
Oct-10	0.89	1.66	0.71	2.62	0.78	0.85	1.19	0.73	0.47	0.62	1.15	1.70	1.14
Nov-10	0.91	1.72	2.21	2.21	0.78	2.61	1.79	1.54	0.00	1.00	1.19	1.77	1.66
Dec-10	1.18	1.29	0.88	2.15	1.39	1.56	1.40	0.49	0.00	0.32	0.00	3.42	1.41
Jan-11	1.62	1.28	0.72	1.32	1.18	1.45	1.27	0.74	0.93	0.81	0.00	3.18	1.35
Feb-11	1.79	0.41	1.28	1.62	0.86	1.19	1.23	0.27	1.88	0.86	0.00	2.13	1.24
Mar-11	0.89	0.74	1.90	1.13	1.36	2.02	1.39	0.24	0.00	0.15	0.00	3.60	1.39
Apr-11	1.36	0.97	1.85	2.37	0.98	3.06	1.87	0.78	1.74	1.14	2.56	1.14	1.65
May-11	1.90	1.34	1.50	1.30	0.76	1.54	1.43	0.49	0.81	0.61	0.00	1.48	1.30

13-Month Trend of Type 1 Falls by Type of Care per 1,000 Days-of-Care



State Hospital Use of Seclusion

Civil and Forensic

Data on seclusion use for psychiatric reasons includes the civil and forensic populations and is reported for both monthly and yearly totals.

Table 14 - Hours of Seclusion Use, Monthly Totals for Past Year

No Use in State Hospital System from Jun 2010 through May 2011

Table 15 - Number of Seclusion Events, Monthly Totals for Past Year

No Use in State Hospital System from Jun 2010 through May 2011

State Hospital Use of Mechanical Restraint

Civil and Forensic

Data on mechanical restraint use for psychiatric reasons includes the forensic and civil populations and is reported for both monthly and yearly totals.

Table 16 - Total Hours of Mechanical Restraint Use by Hospital and Unit In Month

ABV	WARD	Total Hrs
WER	35-3	0.98

Table 17 - Hours of Mechanical Restraint Use, Monthly Totals for Past Year

ABV	Total	Jun_10	Jul_10	Aug_10	Sep_10	Oct_10	Nov_10	Dec_10	Jan_11	Feb_11	Mar_11	Apr_11	May_11
CLA	0.65	0.40	0.00	0.00	0.25	0.00	0.00	0.00	0.00	0.00	0.00	0.00	0.00
NOR	13.37	5.00	1.75	0.92	0.48	0.00	2.22	0.00	0.42	1.00	0.83	0.75	0.00
WAR	0.78	0.00	0.58	0.00	0.00	0.00	0.20	0.00	0.00	0.00	0.00	0.00	0.00
WER	18.73	0.00	0.75	1.00	0.00	0.40	0.00	0.00	8.43	2.50	1.50	3.17	0.98

Table 18 - Number of Mechanical Restraint Events, Monthly Totals for Past Year

ABV	Total	Jun_10	Jul_10	Aug_10	Sep_10	Oct_10	Nov_10	Dec_10	Jan_11	Feb_11	Mar_11	Apr_11	May_11
CLA	2	1	0	0	1	0	0	0	0	0	0	0	0
NOR	11	1	1	1	1	0	3	0	1	1	1	1	0
WAR	3	0	2	0	0	0	1	0	0	0	0	0	0
WER	20	0	1	1	0	1	0	0	8	2	2	4	1

State Hospital Use of Physical Restraint

Civil and Forensic

Data on physical restraint use for psychiatric reasons includes the civil and forensic populations and is reported for both monthly and yearly totals. Physical restraint events lasting less than 60 seconds are reflected as 0.00 hours.

Table 19 - Hours of Physical Restraint Use by Hospital & Unit

ABV	WARD	Total	ABV	WARD	Total	ABV	WARD	Total
TOR	FB4	1.72	TOR	FB3	0.12	WAR	3IM	0.03
TOR	023	1.53	NOR	10C1	0.09	DAN	311	0.03
CLA	3	1.00	TOR	FC2	0.08	WER	37-2	0.02
WER	35-3	0.90	TOR	062	0.08	WER	34-3	0.02
WER	34-2	0.87	NOR	01A1	0.08	DAN	212	0.01
TOR	FC1	0.83	NOR	51B2	0.05	NOR	51C1	0.01
WAR	3SW	0.75	CLA	6	0.05	NOR	51A2	0.01
TOR	024	0.60	NOR	51C2	0.05			
DAN	312	0.35	NOR	01C1	0.05			
TOR	014	0.33	WER	35-2	0.04			
WAR	IBE	0.17	NOR	51A1	0.03			
WER	34-4	0.14	NOR	51B1	0.03			

Table 20 - Hours of Physical Restraint Use, Monthly Totals for Past Year

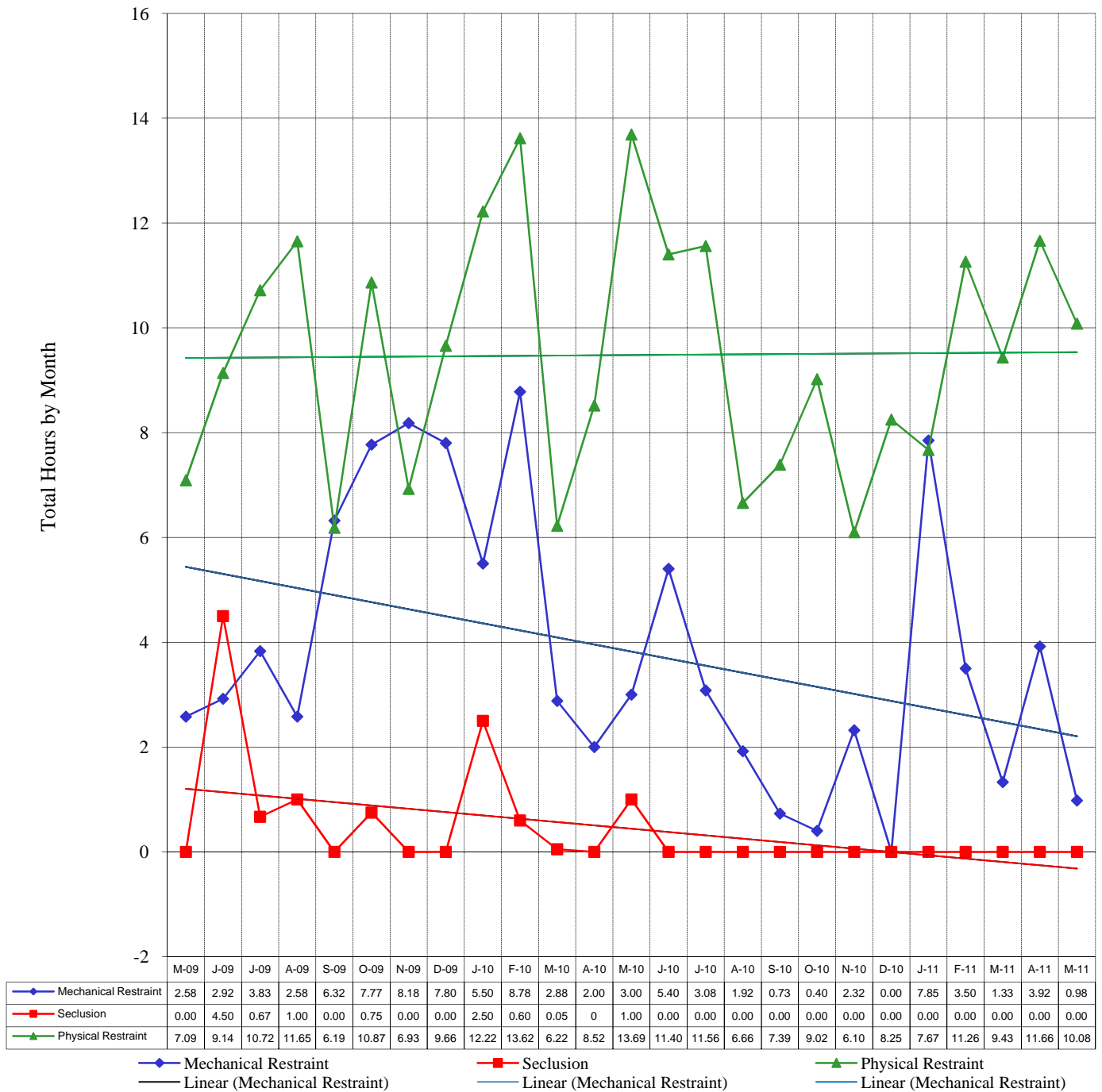
ABV	Total	Jun_10	Jul_10	Aug_10	Sep_10	Oct_10	Nov_10	Dec_10	Jan_11	Feb_11	Mar_11	Apr_11	May_11
CLA	10.65	1.19	0.85	0.31	0.29	0.18	0.62	1.44	0.36	0.19	1.25	2.92	1.05
DAN	20.02	1.15	0.26	0.52	2.17	1.92	0.94	2.35	1.56	2.06	4.96	1.73	0.39
NOR	7.18	1.13	0.67	0.86	0.38	0.59	0.85	0.48	0.45	0.62	0.45	0.28	0.41
TOR	54.72	6.37	8.48	2.38	3.38	4.09	2.02	2.25	2.02	5.93	8.16	4.33	5.30
WAR	7.15	0.35	0.13	0.38	0.75	0.00	1.85	2.25	0.03	0.18	0.17	0.10	0.95
WER	18.32	1.02	1.14	2.26	0.42	1.91	0.71	0.30	2.92	2.25	1.13	2.30	1.98

Table 21 - Number of Physical Restraint Events, Monthly Totals for Past Year

ABV	Total	Jun_10	Jul_10	Aug_10	Sep_10	Oct_10	Nov_10	Dec_10	Jan_11	Feb_11	Mar_11	Apr_11	May_11
CLA	125	16	10	9	7	7	11	10	6	3	11	21	14
DAN	157	10	5	7	14	18	16	17	10	11	19	24	6
NOR	196	25	20	19	9	14	18	20	19	12	15	9	16
TOR	295	40	42	16	20	18	14	15	18	26	38	26	22
WAR	39	4	2	2	3	0	8	4	2	2	2	2	8
WER	170	15	9	24	14	18	15	7	11	7	13	16	21

24-Month Trend of Mechanical Restraint, Physical Restraint and Seclusion Use

The following table represents the total hours of mechanical restraint use, physical restraint use and seclusion use for two years. This data includes the forensic and civil populations with the data being reported to the second and expressed below as a percentage of an hour.



Medication Measures

Beginning in September 2008 the OMHSAS Bureau of Community and Hospital Operations identified the following three medication measures for inclusion in this monthly report. The table information is compiled from the QS1 pharmacy software and reflects the unique count of the number of people served at each hospital on the last day of the month for each measure.

Table 22 - Benzodiazepines

Measure Definition: *Benzodiazepines refers to the number of unique patients served at each hospital, by level-of-care, who have an active, straight order for any benzodiazepine medication on the last day of each month.*

BZD								Forensic			SRTP	Sys
M/Y	Cla	Dan	Nor	Tor	War	Wer	Total	Nor	Tor	Cnt	Tor	Total
Aug-10	153	93	125	85	90	161	707	29	15	44	3	754
Nov-10	149	95	127	94	96	165	726	32	23	55	3	784
Feb-11	143	100	123	95	96	135	692	37	24	61	3	756
May-11	149	96	125	99	94	139	702	33	25	58	4	764

Table 23 - Multiple Atypicals

Measure Definition: *Multiple Atypicals refers to the number of unique patients served at each hospital, by level-of-care, who have an active, straight order for two or more atypical antipsychotic medications on the last day of each month.*

Multiple Atypicals								Forensic			SRTP	Sys
M/Y	Cla	Dan	Nor	Tor	War	Wer	Total	Nor	Tor	Cnt	Tor	Total
Aug-10	16	31	11	48	49	40	195	6	7	13	0	208
Nov-10	20	39	14	49	47	48	217	5	7	12	0	229
Feb-11	9	48	19	63	48	54	241	7	5	12	0	253
May-11	11	51	16	61	54	43	236	9	7	16	0	252

Table 24 - Typical-Atypical

Measure Definition: *Typical-Atypicals refers to the number of unique patients served at each hospital, by level-of-care, who have an active, straight order for a typical and an atypical antipsychotic medication on the last day of each month.*

Typical - Atypical								Forensic			SRTP	Sys
M/Y	Cla	Dan	Nor	Tor	War	Wer	Total	Nor	Tor	Cnt	Tor	Total
Aug-10	63	53	111	44	43	97	411	23	22	45	0	456
Nov-10	58	60	115	47	38	108	426	21	21	42	0	468
Feb-11	52	53	109	50	43	116	423	27	17	44	0	467
May-11	55	58	118	57	43	118	449	26	17	43	0	492

Assaults

Assaults within the state hospital system are defined as any aggressive act by a patient, involving physical contact that may or may not result in injury. Assaults can be directed at a peer, staff or any other individual. The system was designed to require an incident report (form SI-815) on any patient involved in a physical altercation regardless of who may have started the assault. Therefore, every patient-to-patient altercation will result in at least two incident reports.

Table 25 - Patient-to-Patient Assaults by Unit, All Levels of Care

ABV	WARD	Cnt	ABV	WARD	Cnt	ABV	WARD	Cnt	ABV	WARD	Cnt
NOR	51C1	27	SMO	3B	10	NOR	10A1	5	NOR	51A1	3
NOR	01C1	25	WAR	3IM	9	NOR	09CF	5	WER	35-4	2
SMO	5A	20	TOR	024	9	TOR	FB4	4	WAR	3SW	2
CLA	3	17	WER	34-2	9	CLA	7	4	CLA	2	2
NOR	51B1	17	WER	35-2	9	TOR	022	4	DAN	211	2
TOR	013	17	WER	37-1	8	NOR	51B2	4	WER	34-4	2
DAN	310	14	SMO	6B	6	DAN	312	4	TOR	011	2
NOR	51C2	14	WER	37-3	6	SMO	3A	4	CLA	6	2
DAN	210	12	NOR	01A1	6	WAR	3NM	4	TOR	023	2
WER	34-3	11	CLA	4	6	NOR	09AR	4	TOR	062	2
DAN	212	11	WER	37-2	5	TOR	FC1	4	NOR	51A2	2
NOR	10C1	10	TOR	012	5	NOR	09AF	3	DAN	311	1

Table 26 - Rate of Patient-to-Patient Assaults Events with Patient Injury per 1,000 Days-of-Care

	Civil							Forensic			S RTP
Pt.-to-Pt. Assault w/ any Injury	Cla	Dan	Nor	Tor	War	Wer	Tot.	Nor	Tor	Tot.	S RTP
May-10	1.02	1.13	2.32	2.29	1.22	1.76	1.63	1.23	0.00	0.75	0.00
Jun-10	0.91	1.16	2.53	1.23	1.02	1.04	1.32	2.02	0.56	1.53	0.00
Jul-10	1.60	0.37	2.32	2.14	0.98	0.99	1.46	3.94	1.00	2.78	0.00
Aug-10	0.44	0.73	2.88	2.13	0.59	0.97	1.35	2.72	1.03	2.10	1.32
Sep-10	1.81	1.71	1.47	1.37	0.79	2.14	1.58	2.78	2.56	2.51	0.00
Oct-10	1.18	0.92	3.56	1.31	1.16	0.60	1.42	2.43	0.94	1.87	1.15
Nov-10	1.83	1.72	1.92	1.36	0.61	0.37	1.28	2.82	0.48	2.00	1.19
Dec-10	0.88	1.29	1.91	0.50	0.99	0.84	1.07	2.20	0.00	1.46	2.33
Jan-11	3.09	0.55	3.91	1.16	1.57	0.60	1.84	3.95	3.24	3.70	0.00
Feb-11	1.14	0.83	1.92	1.98	0.64	1.19	1.31	2.17	0.94	1.72	1.30
Mar-11	1.48	1.12	2.78	0.81	0.19	1.07	1.29	5.38	2.45	4.29	0.00
Apr-11	0.76	1.16	2.16	1.18	0.59	0.37	1.02	3.91	0.43	2.61	0.00
May-11	1.32	0.96	1.81	1.30	0.57	1.07	1.19	5.15	1.62	3.82	0.00

Table 27 - Patient-to-Staff Assault Events by Unit, All Levels of Care

ABV	WARD	Cnt	ABV	WARD	Cnt	ABV	WARD	Cnt
CLA	3	10	NOR	10C1	2	CLA	4	1
WAR	3SW	5	CLA	5	2	DAN	210	1
WER	34-2	5	NOR	51A1	2	NOR	09AF	1
DAN	211	4	DAN	311	2	NOR	09CF	1
WAR	3NM	4	NOR	01A1	2	NOR	10A1	1
WAR	IBE	4	SMO	6A	2	NOR	51B2	1
WER	35-2	4	NOR	01C1	2	NOR	51C1	1
WER	35-3	3	TOR	022	2	SMO	5A	1
WER	37-3	3	SMO	3B	2	TOR	013	1
NOR	51B1	3	TOR	FC1	2	TOR	024	1
DAN	212	3	TOR	FC2	2	TOR	FB4	1
WER	37-2	3	WER	34-3	2	WER	35-4	1
WAR	3IM	3	DAN	312	1	NOR	51C2	1

Table 28 - Rate of Patient-to-Staff Assault Events with Injury to Staff per 1,000 Days-of-Care

	Civil							Forensic			S RTP
Pt/Staff Assault w/ Staff Inj per 1K days	Cla	Dan	Nor	Tor	War	Wer	Tot.	Nor	Tor	Tot.	S RTP
May-10	0.00	0.94	0.00	0.00	0.00	1.09	0.40	0.00	1.67	0.45	3.57
Jun-10	0.15	0.19	1.19	0.35	0.00	2.35	0.79	0.51	1.11	0.61	1.19
Jul-10	0.44	0.37	0.73	0.16	1.18	0.99	0.61	0.25	0.00	0.15	1.15
Aug-10	0.00	0.91	0.29	0.33	0.99	0.97	0.57	0.99	0.00	0.60	1.15
Sep-10	0.30	0.57	0.15	0.68	0.40	1.13	0.54	0.51	0.00	0.31	1.19
Oct-10	0.00	0.92	0.86	0.66	0.00	1.09	0.65	0.49	0.47	0.47	0.00
Nov-10	0.15	1.34	0.29	0.34	1.02	0.87	0.64	0.51	0.00	0.33	0.00
Dec-10	0.44	1.29	0.59	0.17	0.79	0.12	0.52	1.22	0.00	0.81	0.00
Jan-11	0.59	0.55	1.01	0.66	0.20	1.45	0.80	0.74	0.93	0.81	0.00
Feb-11	0.00	0.62	1.60	0.54	0.00	0.79	0.63	1.09	0.00	0.69	1.30
Mar-11	0.30	1.86	0.88	0.00	0.19	1.55	0.83	0.73	0.41	0.61	0.00
Apr-11	0.30	0.97	0.93	0.68	0.00	0.49	0.56	0.78	0.43	0.65	0.52
May-11	1.17	0.38	0.45	0.49	0.96	1.07	0.78	0.49	0.00	0.31	0.00