

Everything is Better Together! Partnering for Success

Christina Conell

June 20, 2017

Welcome!



OFFICE of
COMMUNITY
FOOD SYSTEMS



The surprising number of American adults who think chocolate milk comes from brown cows

By Caitlin Dewey June 15



Seven percent of American adults believe chocolate milk comes from brown cows, according to a recent online survey commissioned by the Innovation Center of U.S. Dairy. Here are a few other things Americans get wrong. (Elyse Samuels/The Washington Post)



OFFICE of
COMMUNITY
FOOD SYSTEMS

Agenda

- What is a local food system?
- Three ways to make change
 - » Procurement
 - » Education
 - » Partnerships
- Four actions to take



OFFICE of
COMMUNITY
FOOD SYSTEMS

What is a local food system?



OFFICE of
COMMUNITY
FOOD SYSTEMS

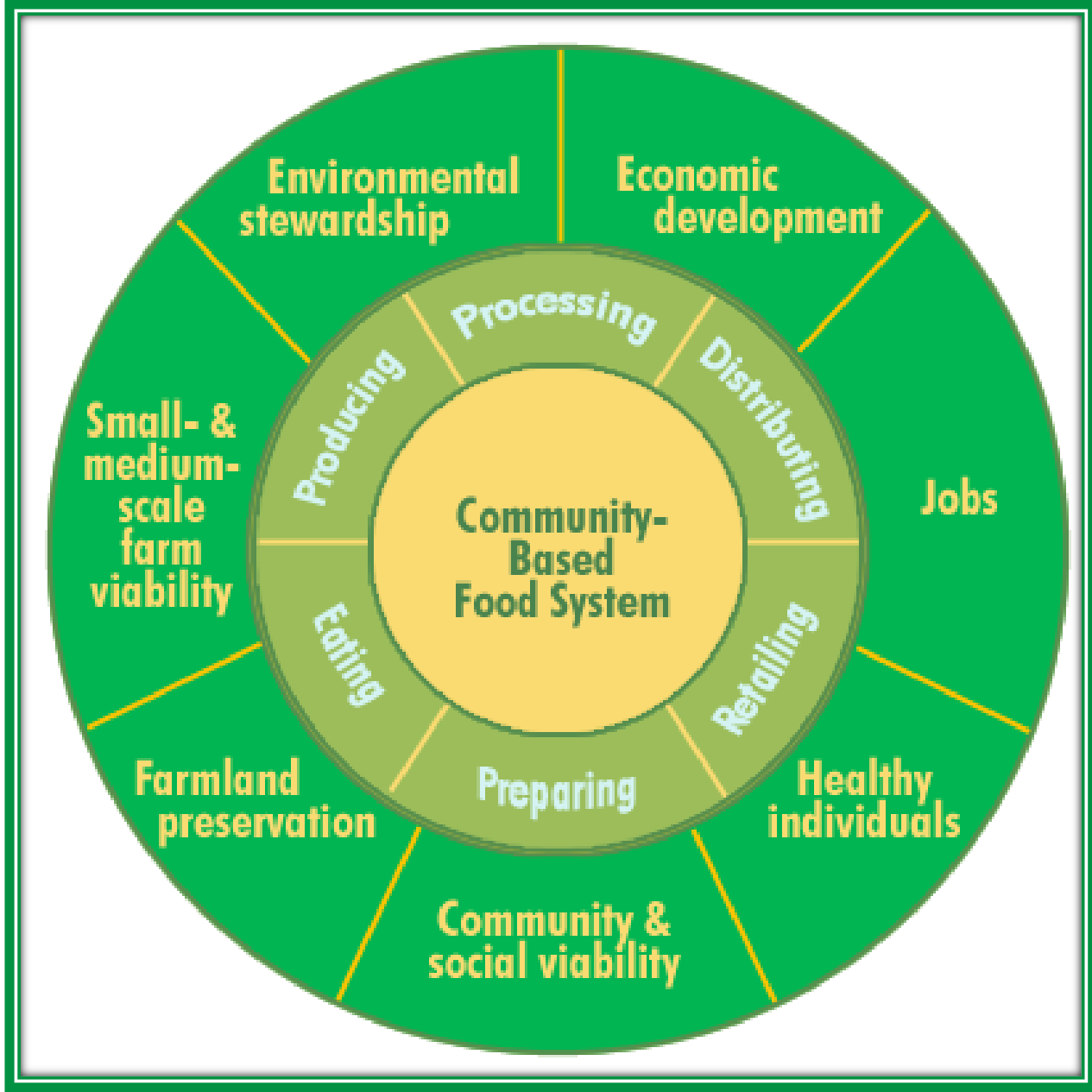
What is a Community Food System?

A food system in which food production, processing, distribution and consumption are integrated to enhance the environmental, economic, social and nutritional health of a particular place. In other words, the goal of the food system is the health (broadly defined) of the community it's situated in.

Four values typically characterize community food systems – food security, sustainability, proximity, and self-reliance.



OFFICE of
COMMUNITY
FOOD SYSTEMS



Food Education



Local Food



OFFICE of
COMMUNITY
FOOD SYSTEMS



School settings



OFFICE of
COMMUNITY
FOOD SYSTEMS



OFFICE of
COMMUNITY
FOOD SYSTEMS



OFFICE of
COMMUNITY
FOOD SYSTEMS



OFFICE of
COMMUNITY
FOOD SYSTEMS



OFFICE of
COMMUNITY
FOOD SYSTEMS



Local in Summer



OFFICE of
COMMUNITY
FOOD SYSTEMS

Local in Preschool



OFFICE of
COMMUNITY
FOOD SYSTEMS



2015 Farm to School Census tell us...

76% of respondents (3,002 out of 3,954 districts) experienced at least one of the following benefits:

- reduced food waste (18%)
- lower school meal program costs (21%)
- greater acceptance of the new meal pattern (28%)
- increased participation (17%)
- greater community support (39%)



Procurement



OFFICE *of*
COMMUNITY
FOOD SYSTEMS



Schools spend
more than
\$12 billion
on food



OFFICE of
COMMUNITY
FOOD SYSTEMS



USDA's Farm to School Census
shows schools invest

\$790 MILLION
in local communities.

That's a **105% increase**
over previous results!

USDA The United States Department of Agriculture
Food and Nutrition Service

<https://farmtoschoolcensus.fns.usda.gov>



THE
FARM to SCHOOL
PROGRAM

Purchasing with values



OFFICE of
COMMUNITY
FOOD SYSTEMS



OFFICE of
COMMUNITY
FOOD SYSTEMS

Education



OFFICE of
COMMUNITY
FOOD SYSTEMS



OFFICE of
COMMUNITY
FOOD SYSTEMS

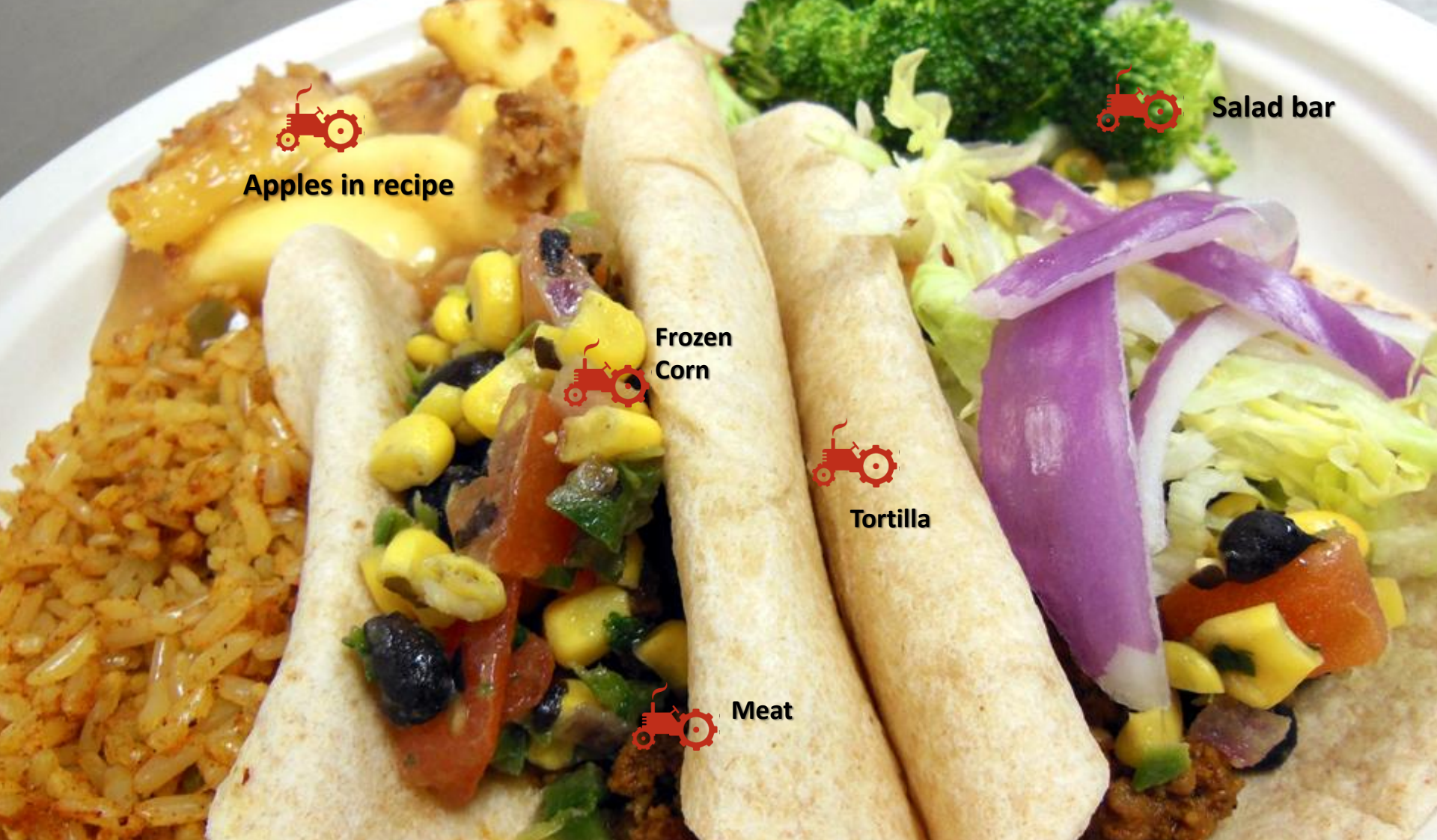
Partnerships



OFFICE *of*
COMMUNITY
FOOD SYSTEMS



OFFICE of
COMMUNITY
FOOD SYSTEMS



 Apples in recipe

 Salad bar

 Frozen Corn

 Tortilla

 Meat

Themed Menu – Minnesota Thursday



OFFICE of
COMMUNITY
FOOD SYSTEMS

OCT 2, 2014

MN
THURSDAYS

MENU

Roasted Turkey Breast
Mashed Potatoes & Gravy
Butternut Squash Bake
Apple Kale Salad
Local Apple, French Bread

**FOOD
MAP!**

SEED TO SEED
Kale

YOUTH FARM
Butternut Squash

MINNESOTA HARVEST ORCHARD
Apples

SPPS
French Bread

FERRISDALE MARKET
Turkey

L&R POULTRY & PRODUCE
Butternut Squash

FAIRVIEW FARM
Potatoes

#MNThurs



@MPS_TRUEFOOD

Lunch on the first Thursday of every month will feature seasonal, Minnesota-grown ingredients. It's just another way we support local food and offer you fresh, delicious options!



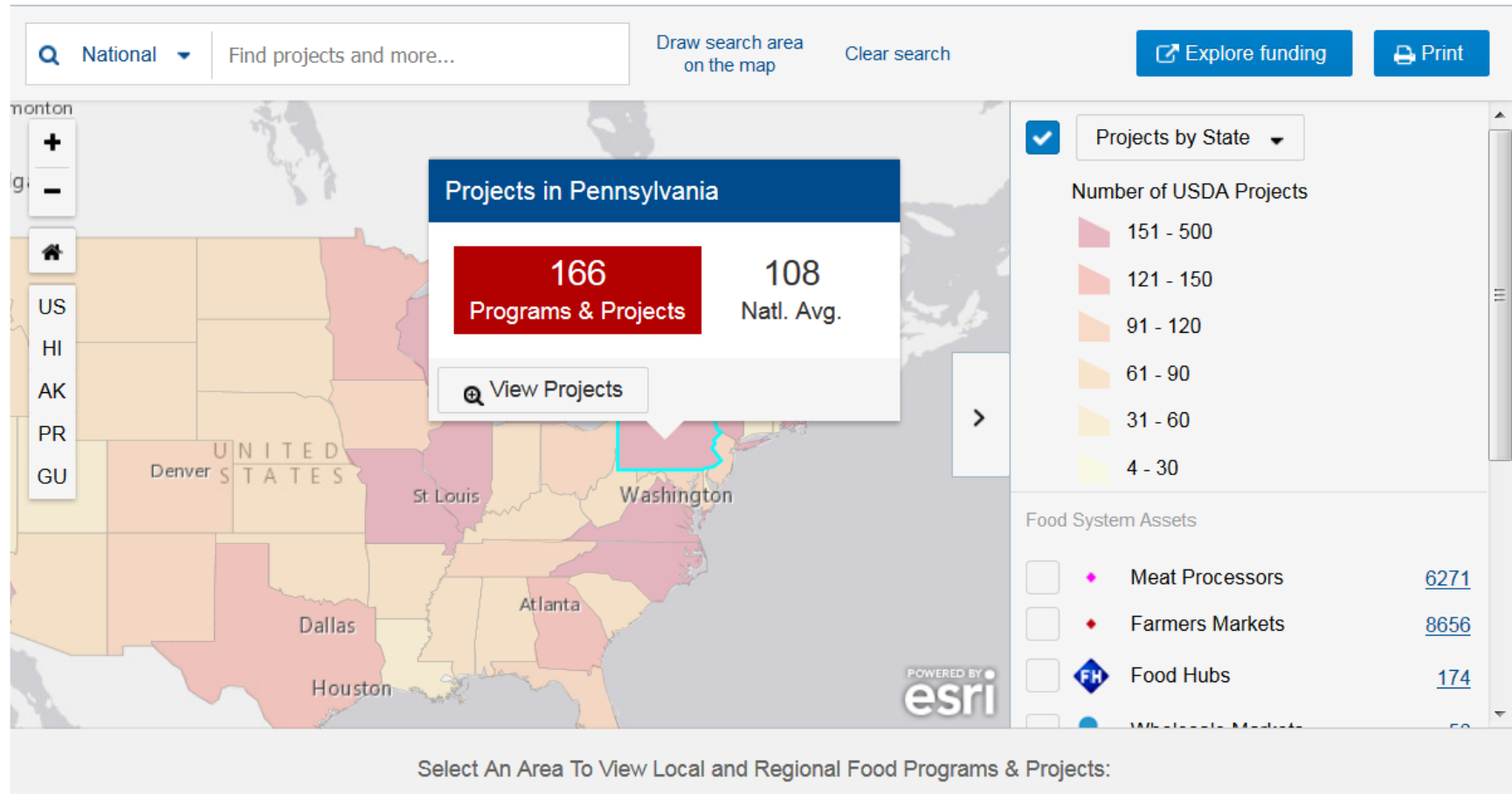
Take Four Actions



OFFICE *of*
COMMUNITY
FOOD SYSTEMS

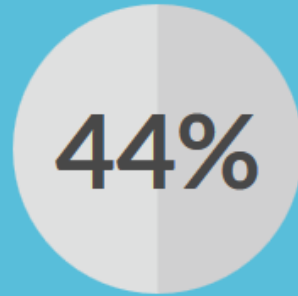
1) Explore the Local Food Compass Map.

The map below shows USDA and other federal investments in local and regional food systems since 2009, along with data such as farmers markets, food hubs, and meat processors. Scroll down to explore the map to see what's happening in your own community or learn how others are using federal support to build local food systems.



OFFICE of
COMMUNITY
FOOD SYSTEMS

2) Visit the USDA Farm to School Census www.farmentoschoolcensus.fns.usda.gov



OF PENNSYLVANIA SCHOOL DISTRICTS

surveyed by USDA say they participate in farm to school activities.



THAT'S
268
DISTRICTS



WITH
1,116
SCHOOLS



AND
612,687
STUDENTS

Another **18%** of districts surveyed plan to start farm to school activities in the future.

(Note: of the 940 school districts in Pennsylvania, 64% completed the USDA Farm to School Census.)



OFFICE of
COMMUNITY
FOOD SYSTEMS



\$18,059,700
INVESTED IN LOCAL FOOD
IN PENNSYLVANIA

WITH THE AVERAGE SCHOOL DISTRICT SPENDING
16% OF THEIR BUDGET ON LOCAL PRODUCTS.

SEE NATIONAL RESULTS ►



OFFICE *of*
COMMUNITY
FOOD SYSTEMS

3) Subscribe to our E-letter, The Dirt!

Delivered every other Tuesday, chock full of updates, webinar info, relevant news, and field notes! More than 26,000 subscribers.

Subscribe at:
www.usda.gov/farmtoschool



United States Department of Agriculture

Volume 1, Issue 2, October 20, 2015

The Dirt

News and Notes from FNS's Office of Community Food Systems



OFFICE of
COMMUNITY
FOOD SYSTEMS

4) Share a success + a challenge.



OFFICE of
COMMUNITY
FOOD SYSTEMS



OFFICE of
COMMUNITY
FOOD SYSTEMS