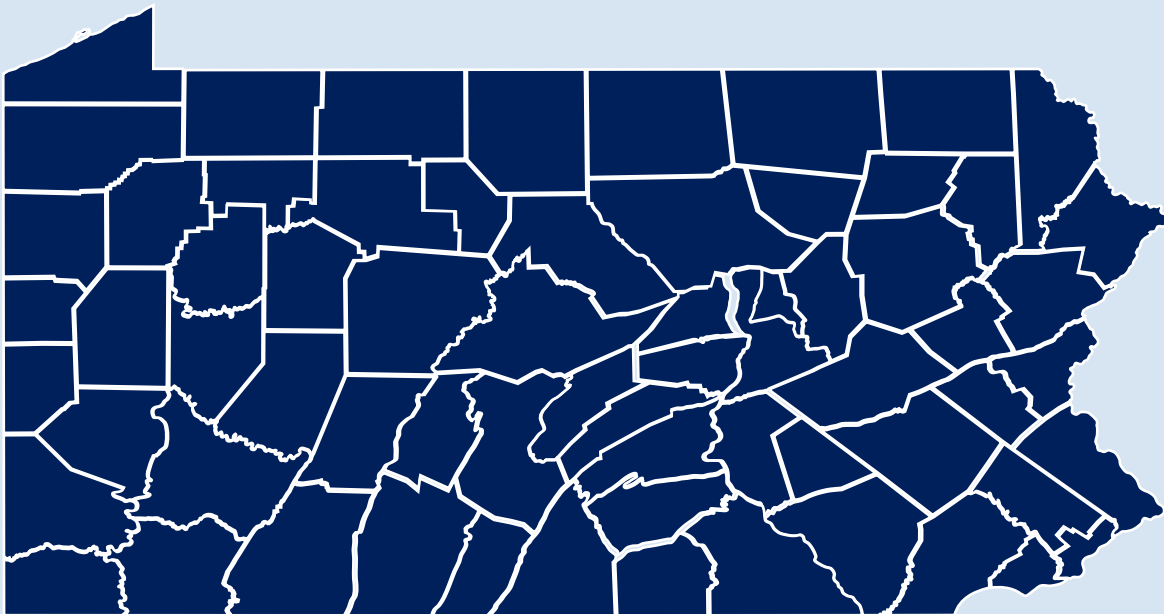




pennsylvania
DEPARTMENT OF HUMAN SERVICES



MONTHLY DATA REPORT

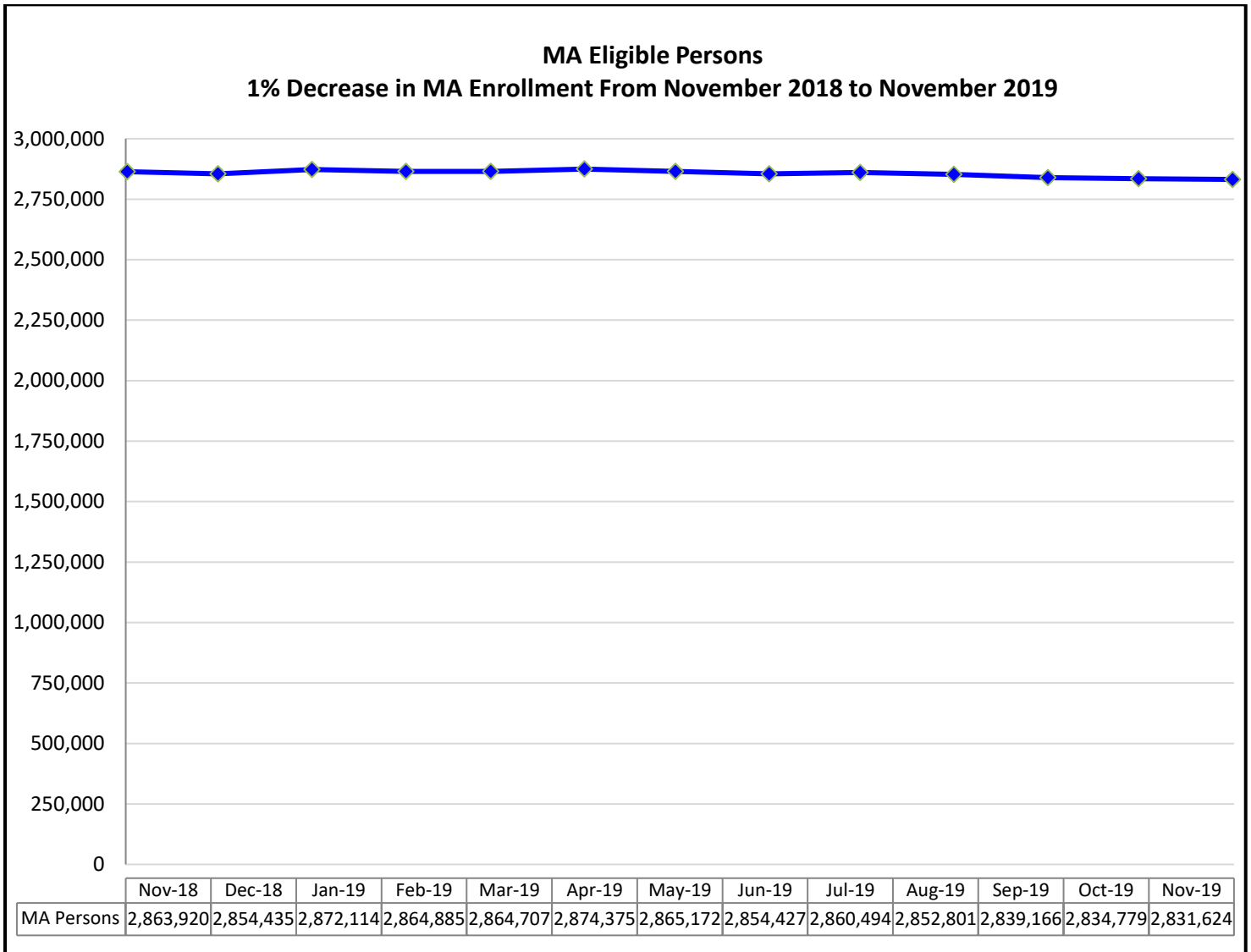
NOVEMBER 2019

TABLE OF CONTENTS

CTRL+Click on one of the major headings below will link you to that section.

MEDICAL ASSISTANCE AND OTHER HEALTH CARE SERVICES.....	2
MA Eligible Persons.....	2
MA Children and CHIP.....	3
State Hospital Admissions/Census.....	4
BENEFIT ASSISTANCE PROGRAMS FOR CHILDREN AND FAMILIES.....	5
TANF Individuals.....	5
Number and Percent: Non-disabled TANF Adults Working.....	6
Number and Percent: Non-disabled TANF Adults Working/Training 20 or More Hours/Week.....	6
TANF Workforce Participation Rates.....	7
TANF Budgets Leaving for Employment.....	8
Individuals on TANF by Length of Time.....	9
SNAP Eligible Persons.....	10
Non-disabled SNAP Adults Working.....	11
SSI Adults and Children.....	12
Child Support Measures.....	12
CHILD WELFARE SERVICES.....	13
Monthly YDC Admissions.....	13
Children in Out-of-Home Care - More or Less than 12 Months.....	13
Children Entering/Re-entering Out-of-Home Care.....	13-14
Adoption/ Discharges to Guardianship.....	14
Settings of Children in Care.....	15
Months from Removal from Home to Permanency.....	16
Child Abuse - Cases and Rates.....	16
CHILD CARE AND EARLY LEARNING SERVICES.....	17
Child Care Subsidies-Enrollment-Waiting List.....	17
Regulated Child Care Usage.....	17
Subsidized Child Care: Regulated vs. Unregulated Settings.....	18
Children in STARS 3 or 4.....	19
ITF Waiver and EI: Enrollment.....	19
LONG TERM SUPPORTS FOR PERSONS WITH DISABILITIES AND OLDER PENNSYLVANIANS	19
Waiver Enrollments (OLTL):	
Attendant Care (Waiver and Act 150).....	19
Aging and Independence.....	20
COMMCARE and OBRA.....	21
LIFE.....	21
Community Health Choices.....	22
Wavier Enrollments (ODP):	
Consolidated and Adult Autism.....	23
P/FDS and Community Living.....	24
Intermediate Care Facilities: Enrollments.....	25
Nursing Home Population.....	25
OTHER METRICS.....	26

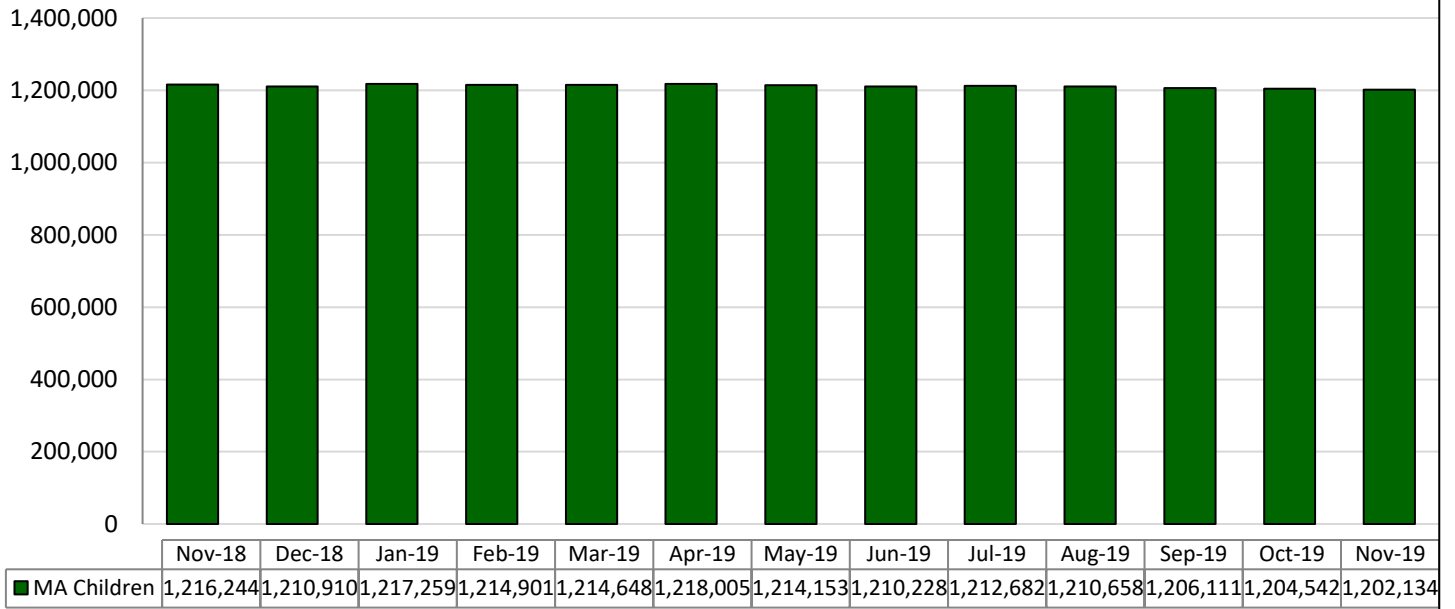
MEDICAL ASSISTANCE AND OTHER HEALTH CARE SERVICES



Data Source: DHS ListServ

NOTE: MA numbers now reflect data pulled on the second Tuesday of the month after the reported month. Previous months are not updated to show retroactive eligibility.

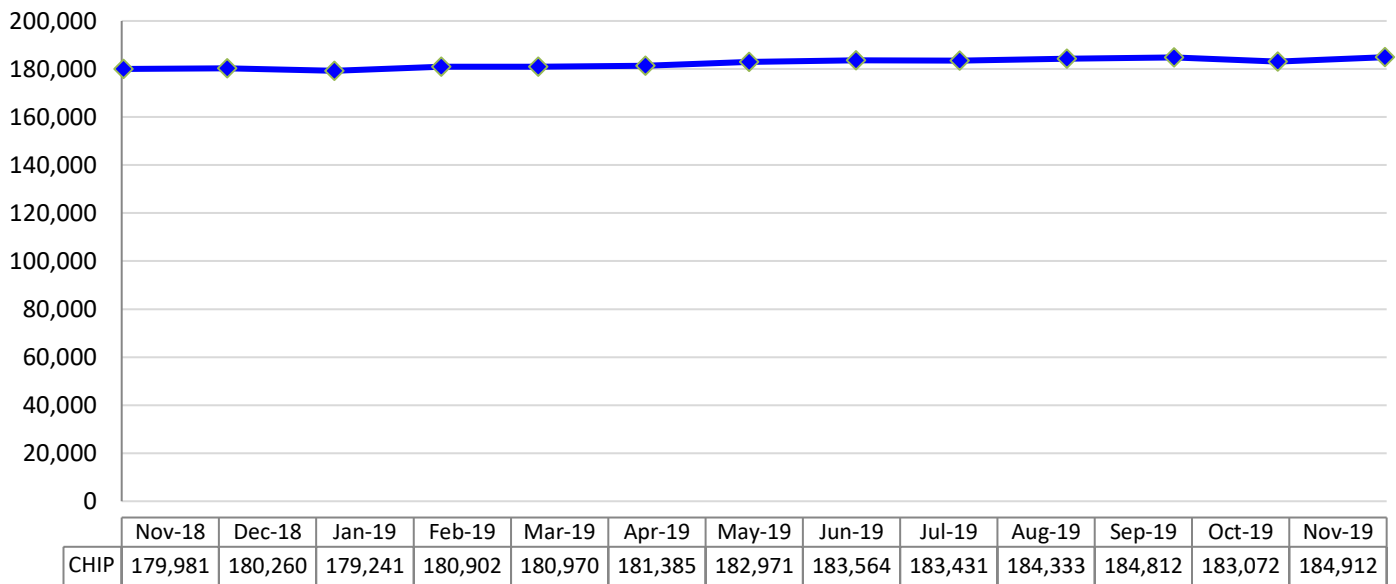
MA Children Preliminary Estimates ("children" can include persons up to 21 years old)



Data Source: DHS Data Enterprise Warehouse

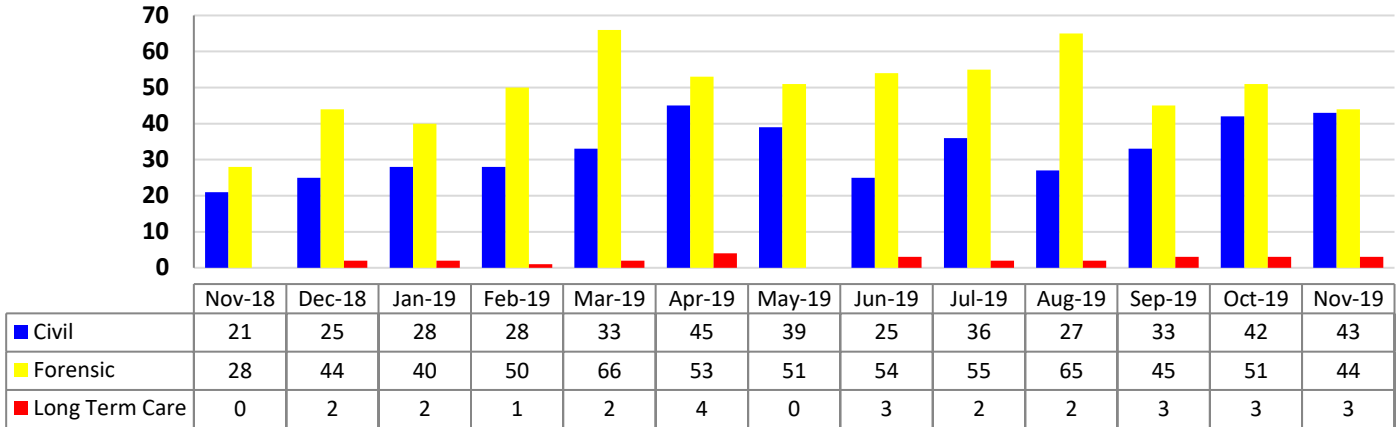
Note: Children are those recipients under the age of 21. (EC (eligible child) is no longer used for determining MA children).

Children's Health Insurance Program (CHIP) Enrollment 3% Increase in CHIP Enrollment From November 2018 to November 2019



Data Source: DHS Data Enterprise Warehouse

State Hospital Admissions
84% Increase in State Hospital Admissions from
November 2018 to November 2019



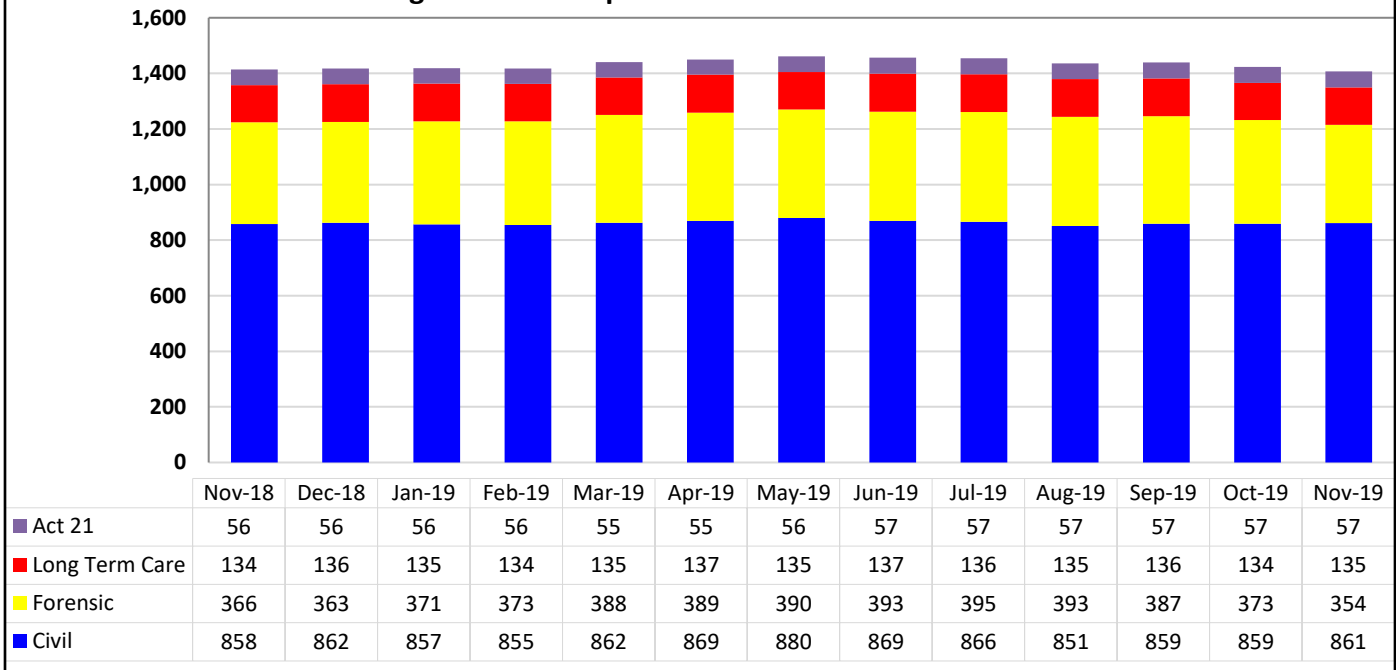
Data Source: Patient Census Information System

Civil: Unduplicated count of civil admissions of patients during the reporting month to: Clarks Summit State Hospital, Danville State Hospital, Norristown State Hospital, Torrance State Hospital, Warren State Hospital and Wernersville State Hospital.

Forensic: Unduplicated count of forensic admissions of patients during the reporting month to: Norristown State Hospital and Torrance State Hospital forensic units.

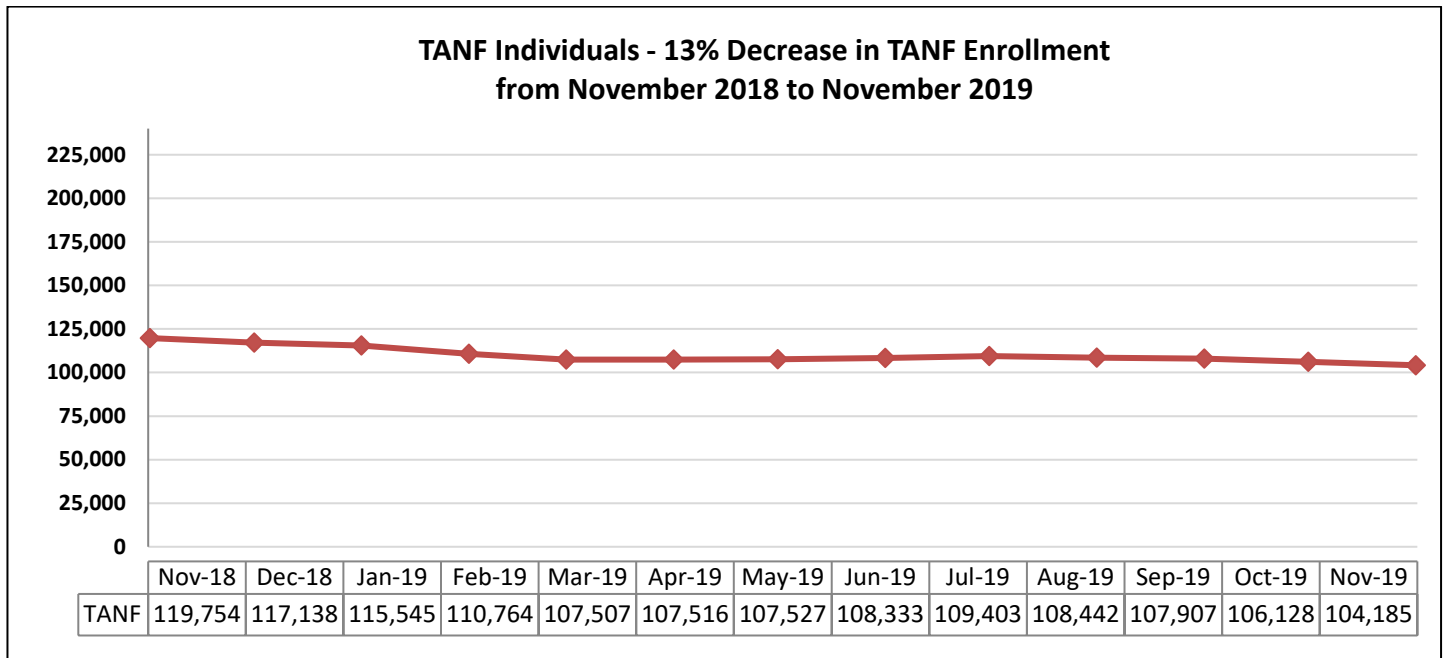
Long Term Care: Unduplicated count of admissions of patients during the reporting period to: South Mountain Restoration Center.

State Hospitals Census
0% Change in State Hospital Census from November 2018 - November 2019



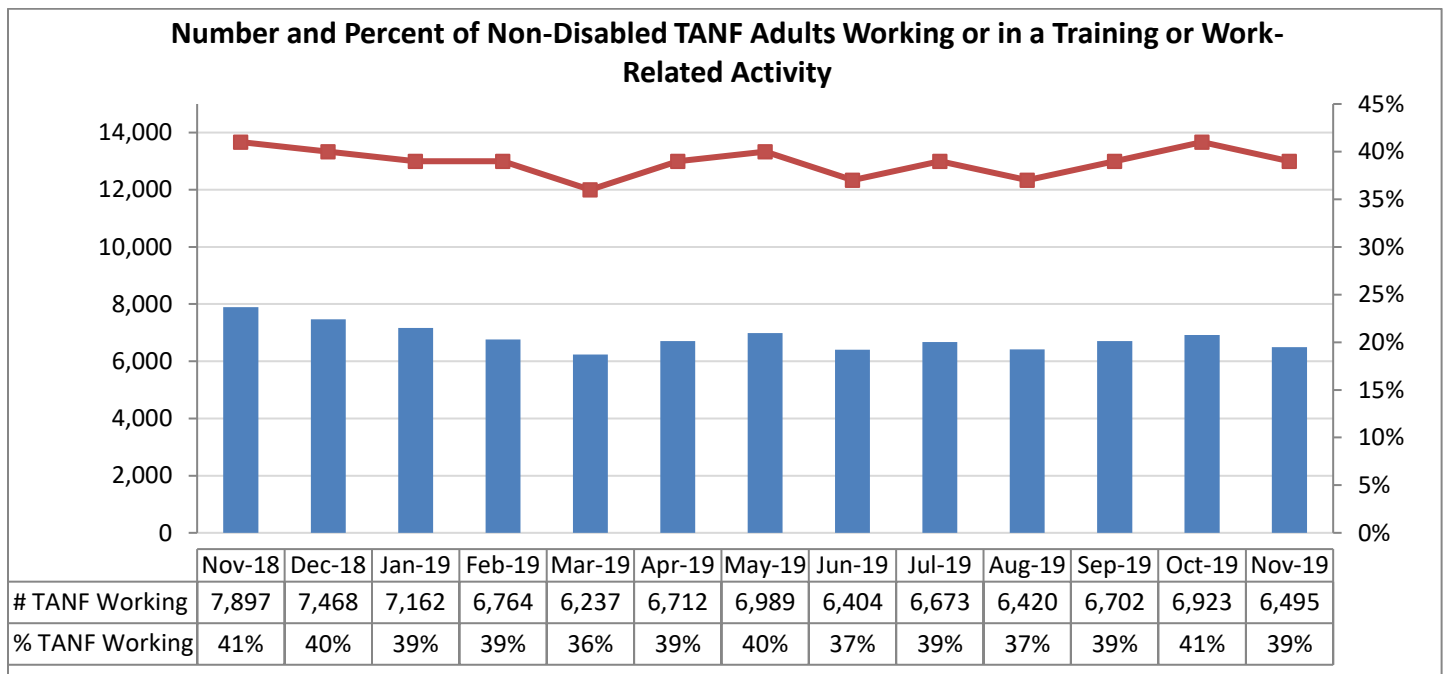
Data Source: Patient Census Information System

BENEFIT ASSISTANCE PROGRAMS FOR CHILDREN AND FAMILIES



Data Source: DHS ListServ/EDW

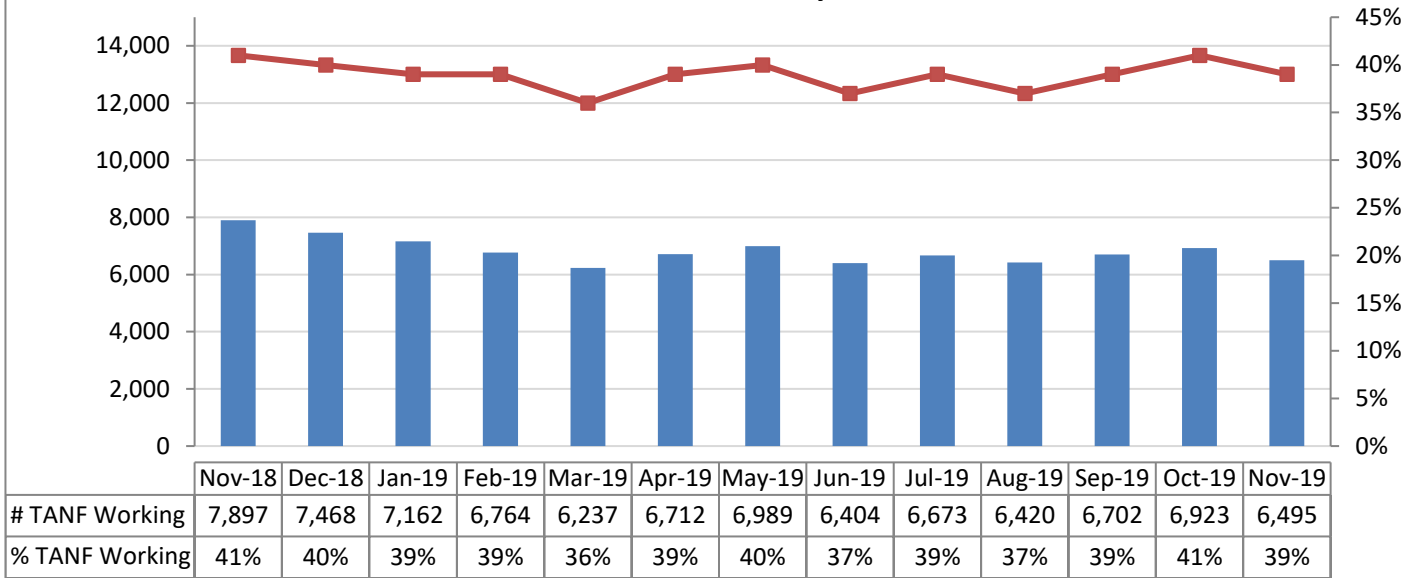
NOTE: TANF numbers now reflect data pulled on the second Tuesday of the month after the reported month.
Starting in July 2014, TANF data is calculated using a new methodology that eliminates duplication of persons moving from county to county in a reported month.



Data Source: AIS32W Report

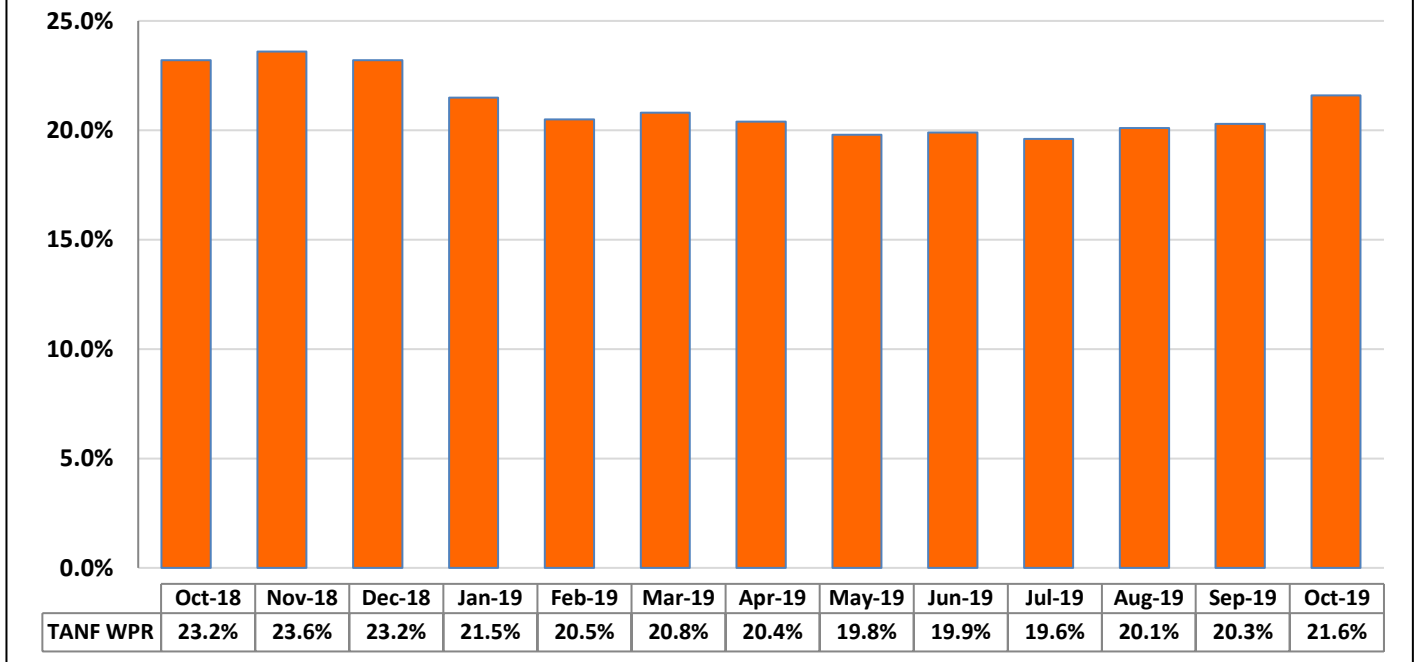
*Data has been updated to count only those with open cases

Number and Percent of Non-Disabled TANF Adults Working or in a Training or Work-Related Activity



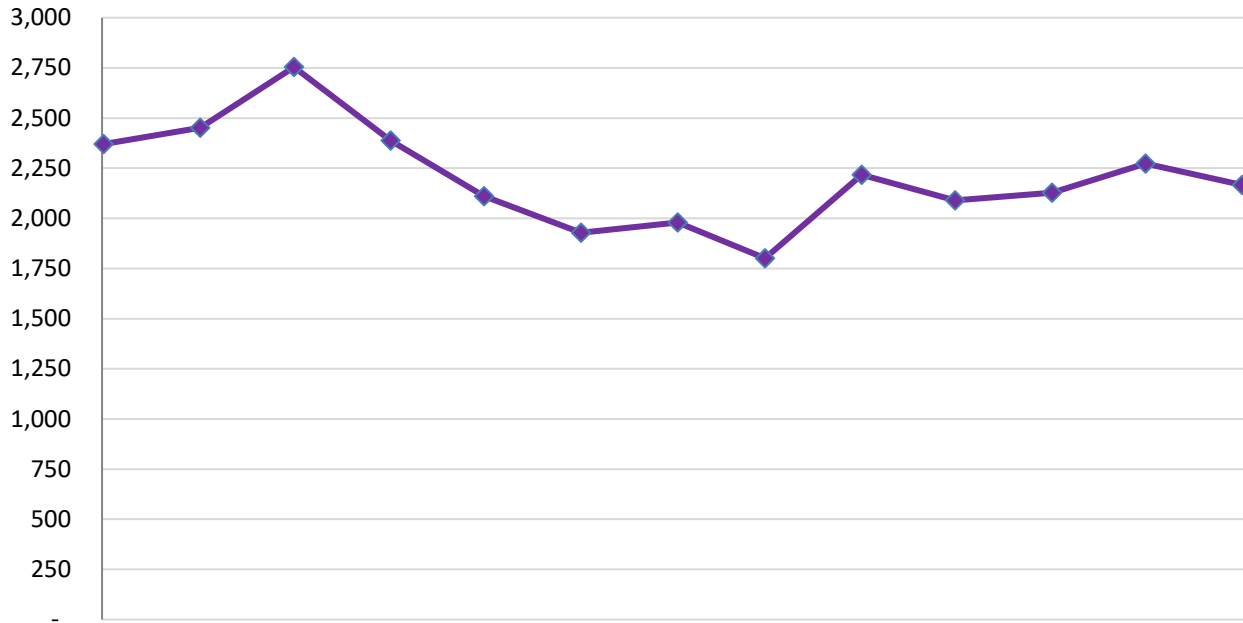
Data Source: AIS32W Report

Pennsylvania Estimated TANF Workforce Participation Rate



Data Source: TNF22 Report

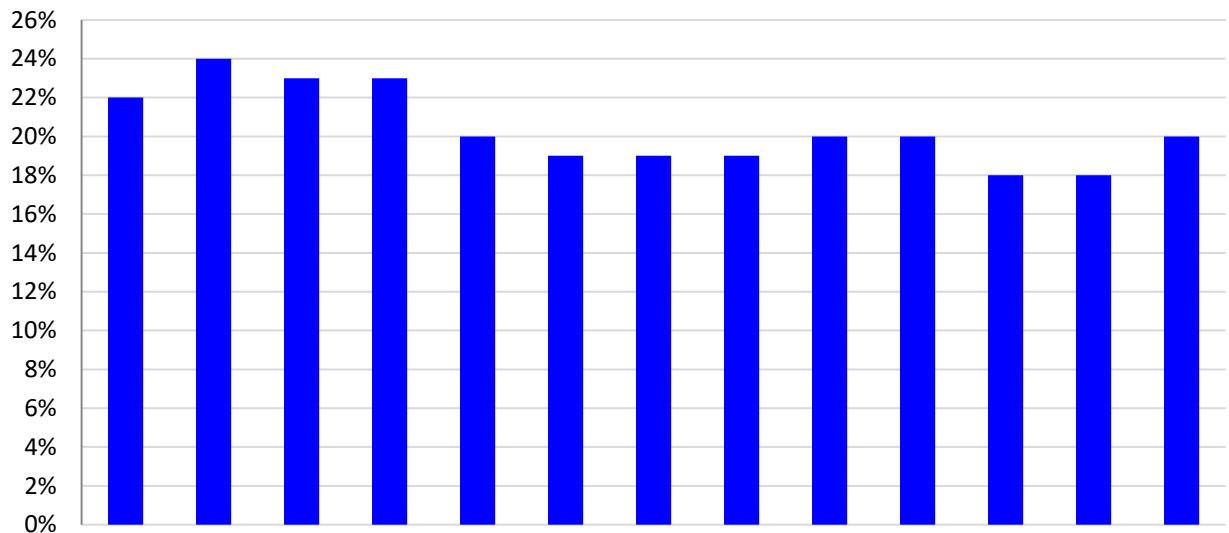
TANF Individuals that Obtain Employment
9% Decrease from August 2018 to August 2019



DHS Data Enterprise Warehouse

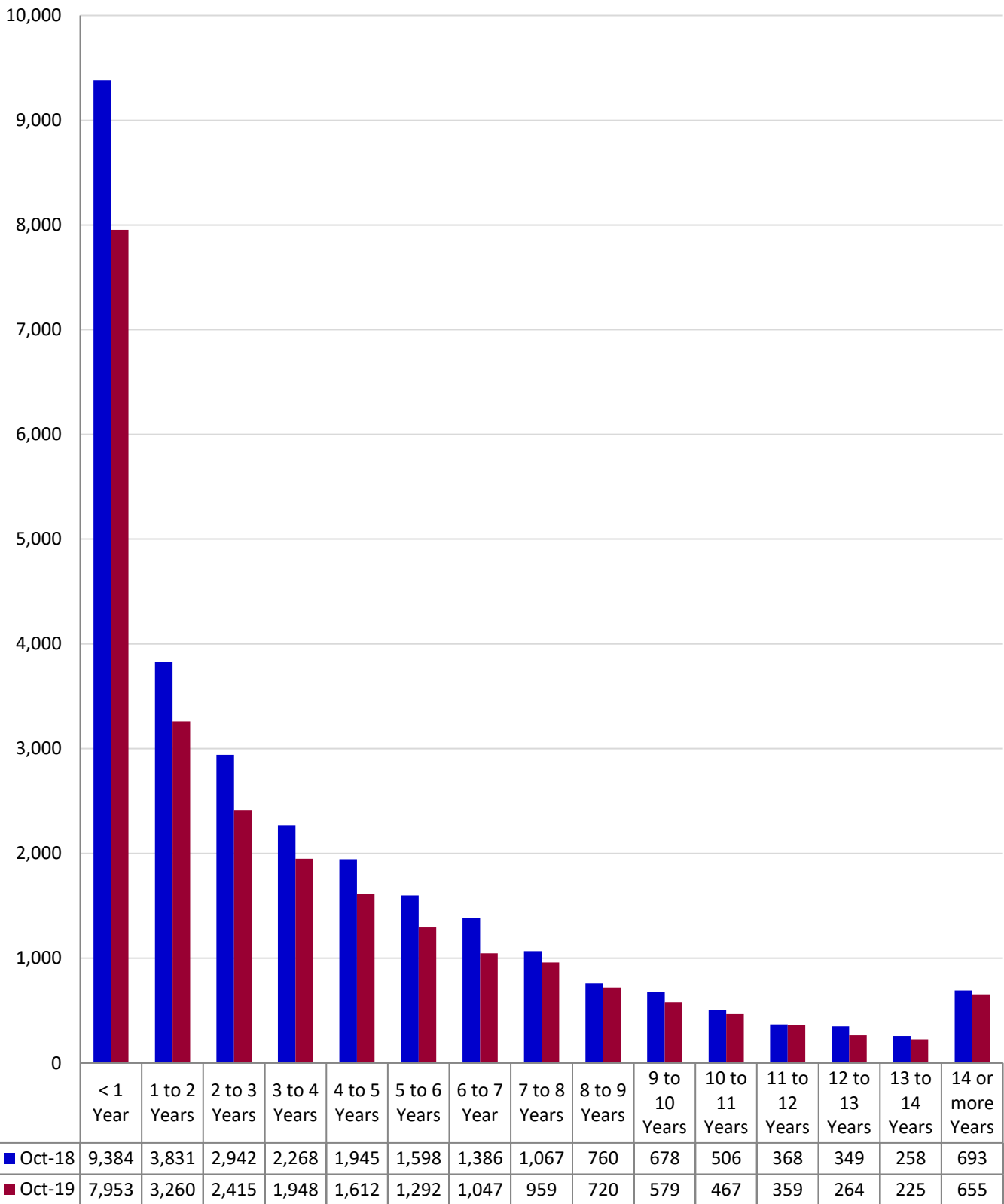
A budget is one or more related or unrelated individuals who occupy a common residence or would occupy a common residence if they were not homeless, and whose needs are considered together in determining eligibility for assistance are considered together in determining eligibility for assistance under one category of assistance.

TANF Budgets Leaving for Employment as Percent of All Budgets that Left TANF



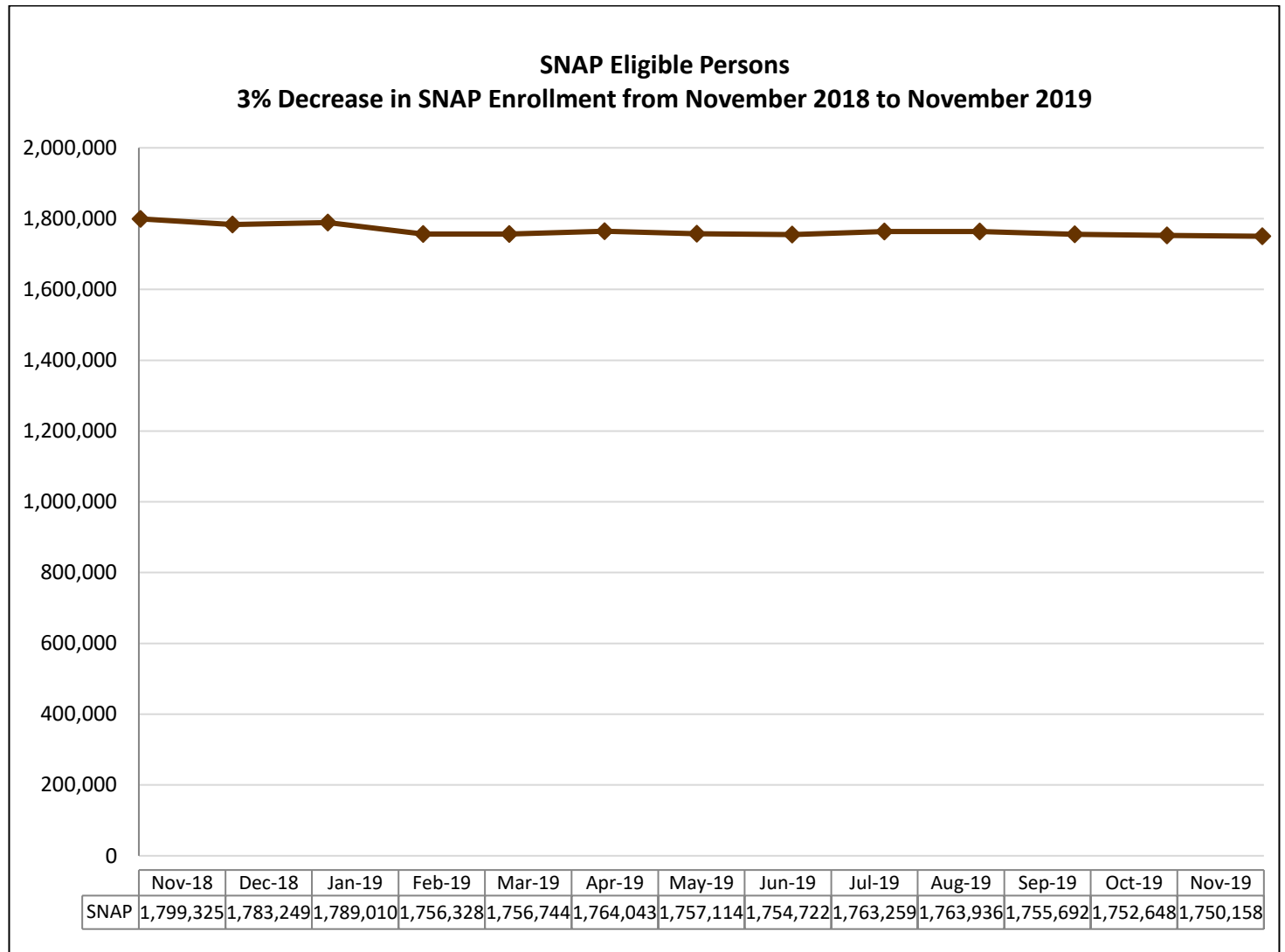
DHS Data Enterprise Warehouse

Adults on TANF by Length of Time



Data Source: AIS32W File

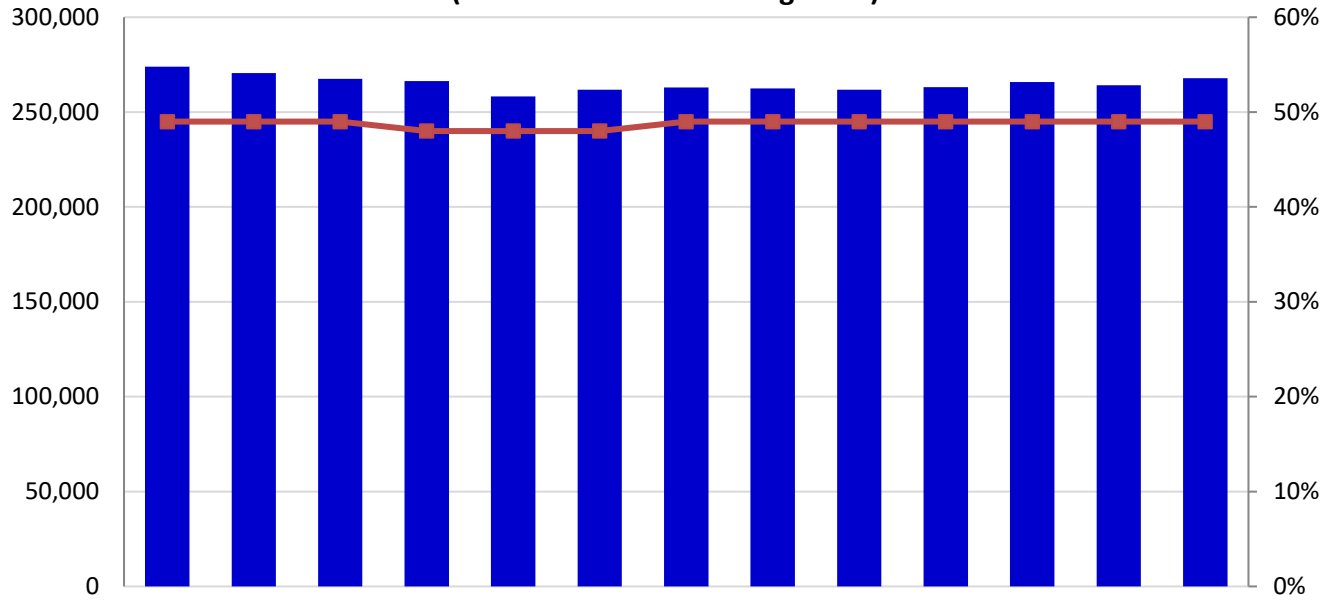
Note: Total time on TANF is cumulative, not subsequent (i.e., as a person moves on and off TANF, each time they are on will add to their total), and also includes time spent on TANF as a child.



Data Source: DHS ListServ/EDW

NOTE: SNAP numbers now reflect data pulled on the second Tuesday of the month after the reported month.

Number and Percent of Non-disabled SNAP Adults Working (Excludes Those Receiving TANF)*

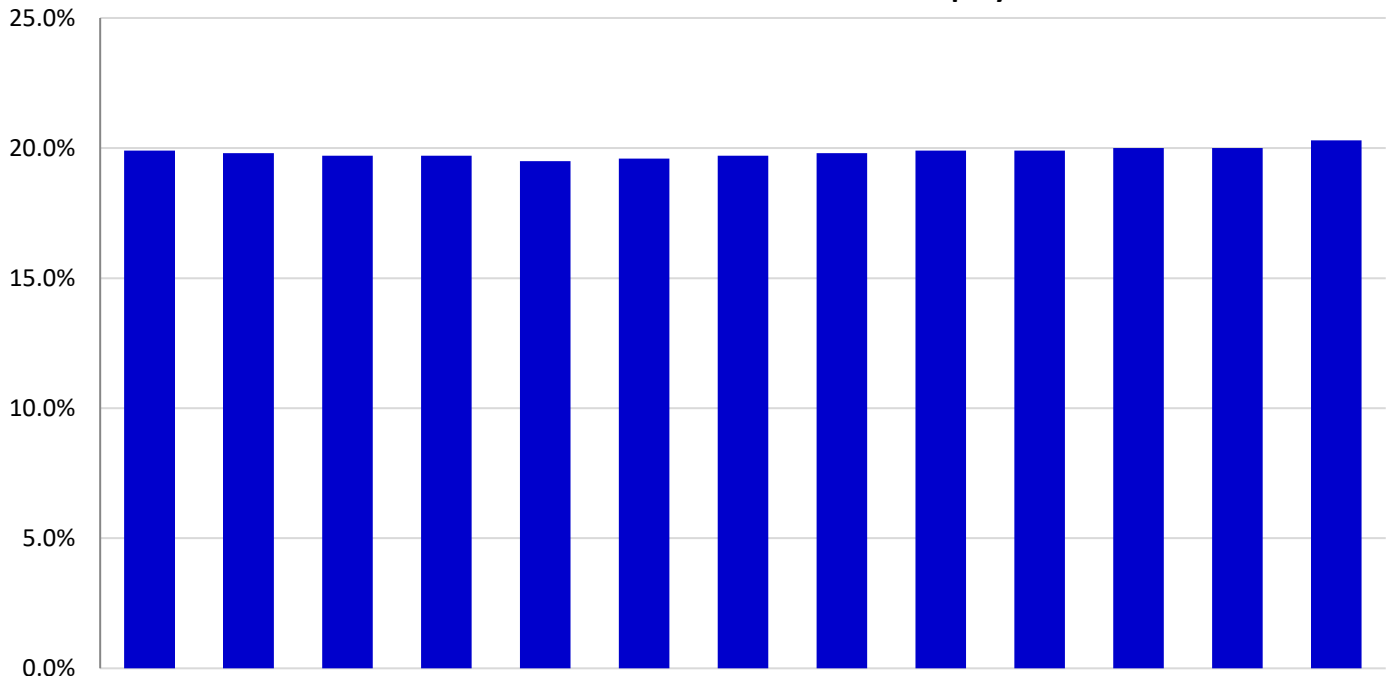


	Oct-18	Nov-18	Dec-18	Jan-19	Feb-19	Mar-19	Apr-19	May-19	Jun-19	Jul-19	Aug-19	Sep-19	Oct-19
# SNAP Working	273,897	270,612	267,527	266,282	258,297	261,822	262,902	262,384	261,787	263,090	265,811	264,131	267,871
% SNAP Working	49%	49%	49%	48%	48%	48%	49%	49%	49%	49%	49%	49%	49%

*Beginning in Jan 2018, SNAP Adults working includes non-elderly only.

Data Source: DHS Enterprise Data Warehouse

Percent of Non-disabled SNAP Adults with Full-time Employment*

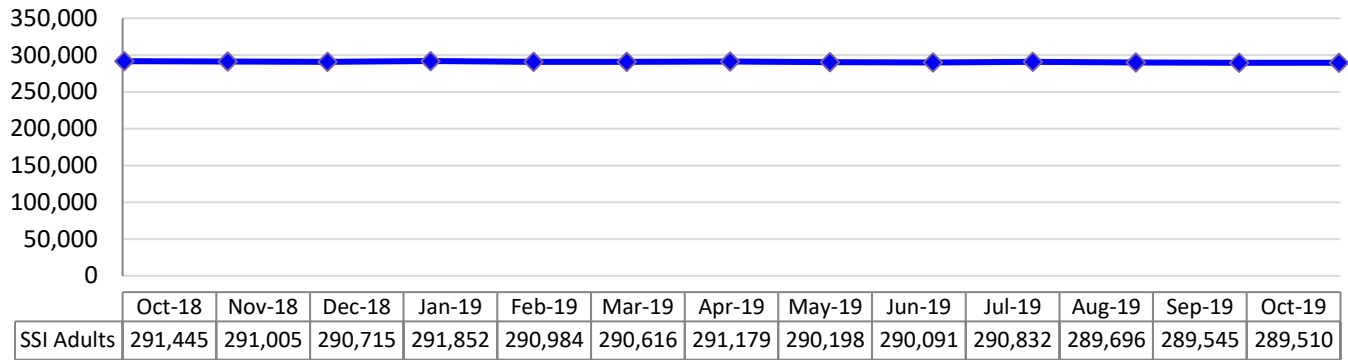


	Oct-18	Nov-18	Dec-18	Jan-19	Feb-19	Mar-19	Apr-19	May-19	Jun-19	Jul-19	Aug-19	Sep-19	Oct-19
% SNAP Working	19.9%	19.8%	19.7%	19.7%	19.5%	19.6%	19.7%	19.8%	19.9%	19.9%	20.0%	20.0%	20.3%

*Full-time status according to CIS Employment Status Code

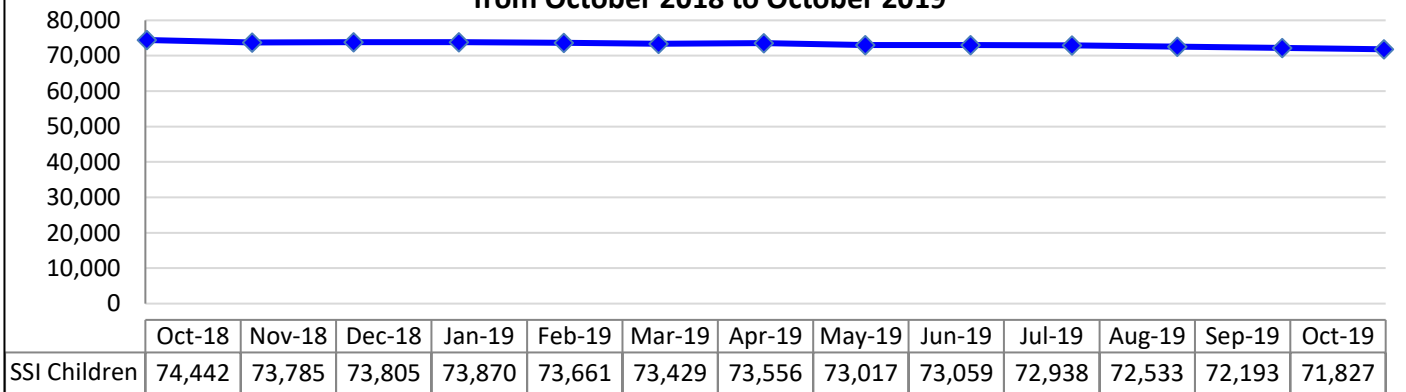
Data Source: DHS Enterprise Data Warehouse

**SSI Adults -- 0.6% Decrease in Total Adult SSI Enrollment
from October 2018 to October 2019**



Data Source: DHS Enterprise Data Warehouse

**SSI Children -- 4% Decrease in Total Child SSI Enrollment
from October 2018 to October 2019**



Data Source: DHS Enterprise Data Warehouse

Child Support Measures

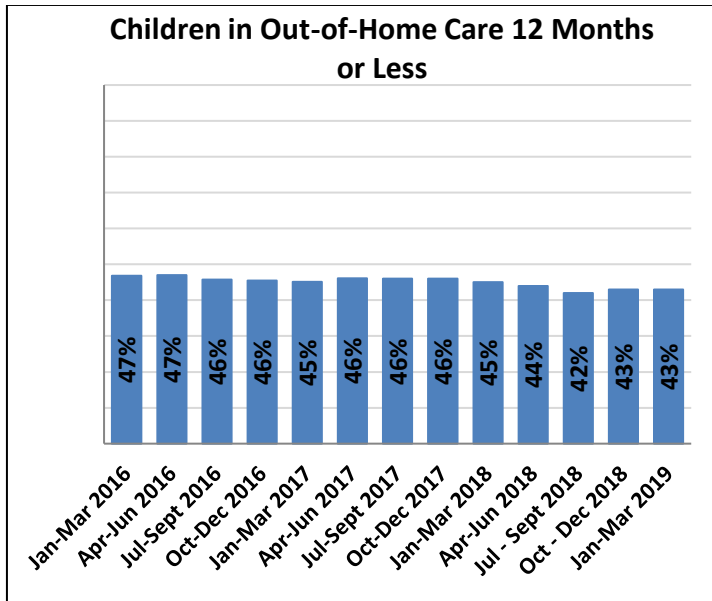
Child Support	Federal Target	Pennsylvania Rate												
		Oct 2018*	Nov 2018	Dec 2018	Jan 2019	Feb 2019	Mar 2019	Apr 2019	May 2019	Jun 2019	July 2019	Aug 2019	Sept 2019	Oct 2019*
Child Support - Cases with Paternity Establishments**	80%	94% *	95%	96%	98%	99%	100%	101%	102%	104%	105%	107%	108%	94% *
Child Support - Current Supports Collected	80%	85% *	85%	85%	84%	84%	84%	84%	84%	84%	84%	84%	84%	85% *
Child Support - Percent of Cases Paying Arrears	80%	52% *	62%	67%	71%	73%	78%	80%	82%	83%	83%	84%	85%	48% *
Cases with Orders	80%	90% *	91%	91%	91%	91%	91%	91%	91%	90%	90%	90%	90%	90% *
Cost Effectiveness (FFY)	\$5.00	FFY 2014-15: \$5.48			FFY 2015-16: \$5.10			FFY 2016-17: \$5.43			FFY 2017-18: \$5.02			FFY 2018-19: \$4.78

*Drop from September to October due to starting of new Federal Fiscal Year (compare with previous year) Data Source: OCSE Reports

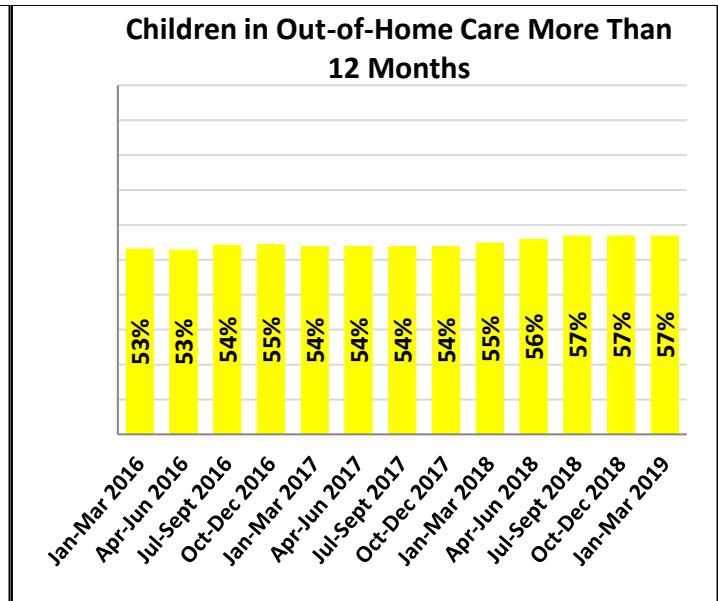
CHILD WELFARE SERVICES

Category: YDC/YFC's	Current	Average
Monthly Admissions	40 (November 2019)	Rolling Year Average 44 (Dec 2018 – Nov 2019)
Level of Improvement in Life Skills from Intake to Discharge for all YDC/YFC participants completing program	6% (November 2019)	Rolling Year Average 8% (Dec 2018 – Nov 2019)

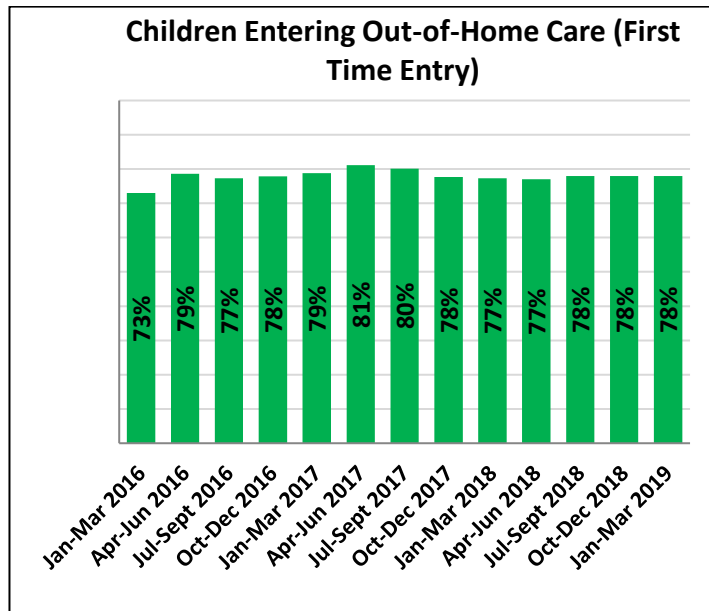
Data Source: Automatic Intake and Incident Reporting System (admissions); Ansell-Casey Life Skills Assessment (life skills)



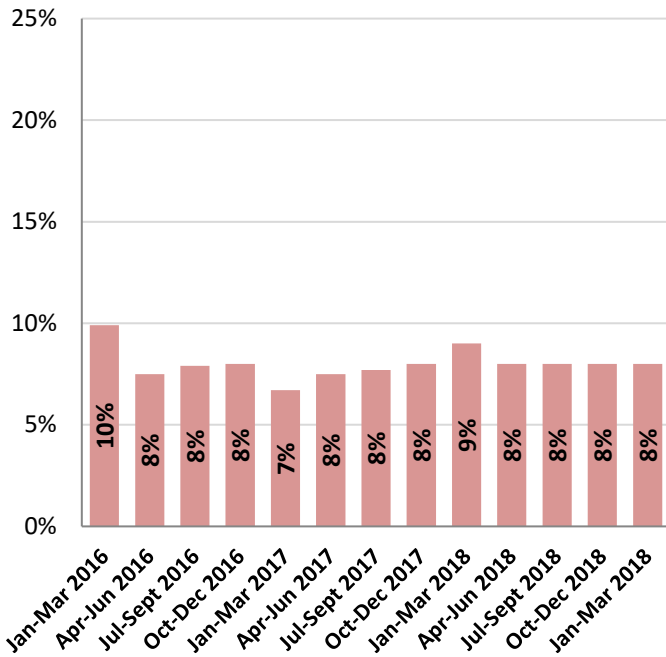
Data Source: AFCARS



Data Source: AFCARS

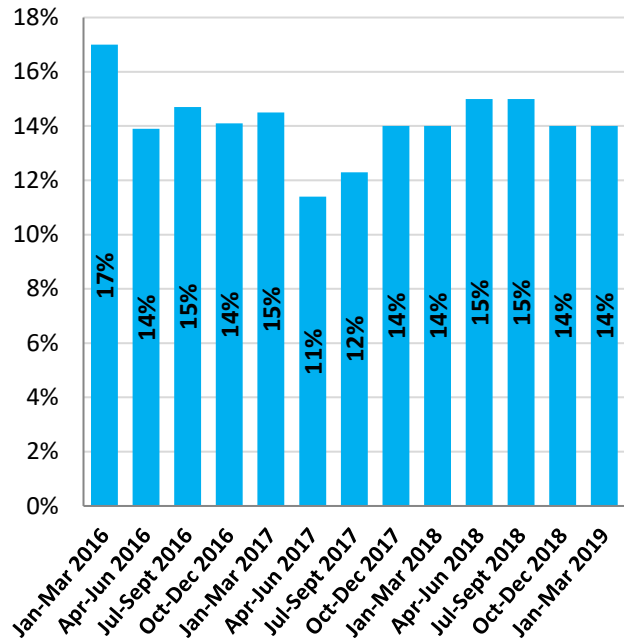


**Children Re-entering Out-of-Home Care:
>12 Months Since Discharge**



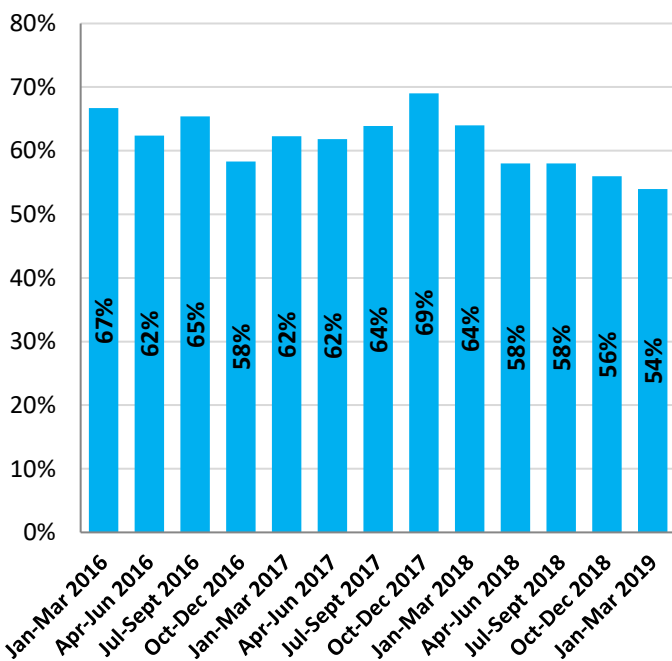
Data Source: AFCARS

**Children Re-entering Out-of-Home Care:
<12 Months Since Discharge**



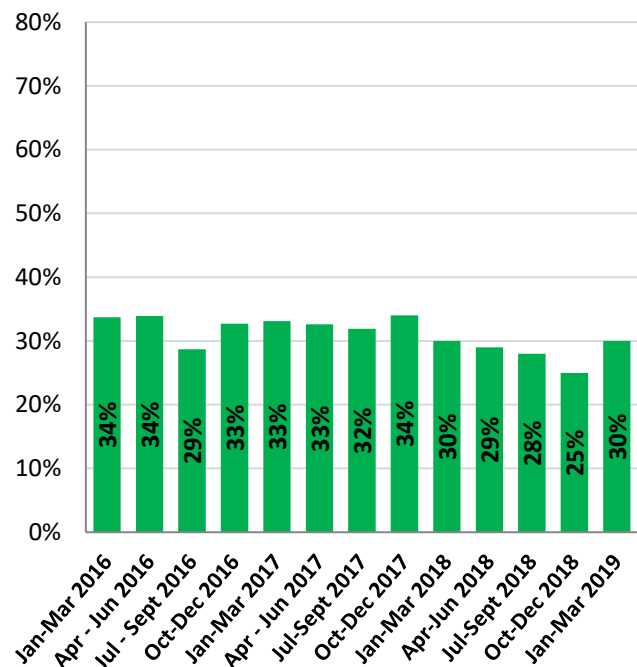
Data Source: AFCARS

Discharges to Guardianship in 24 Months or Less



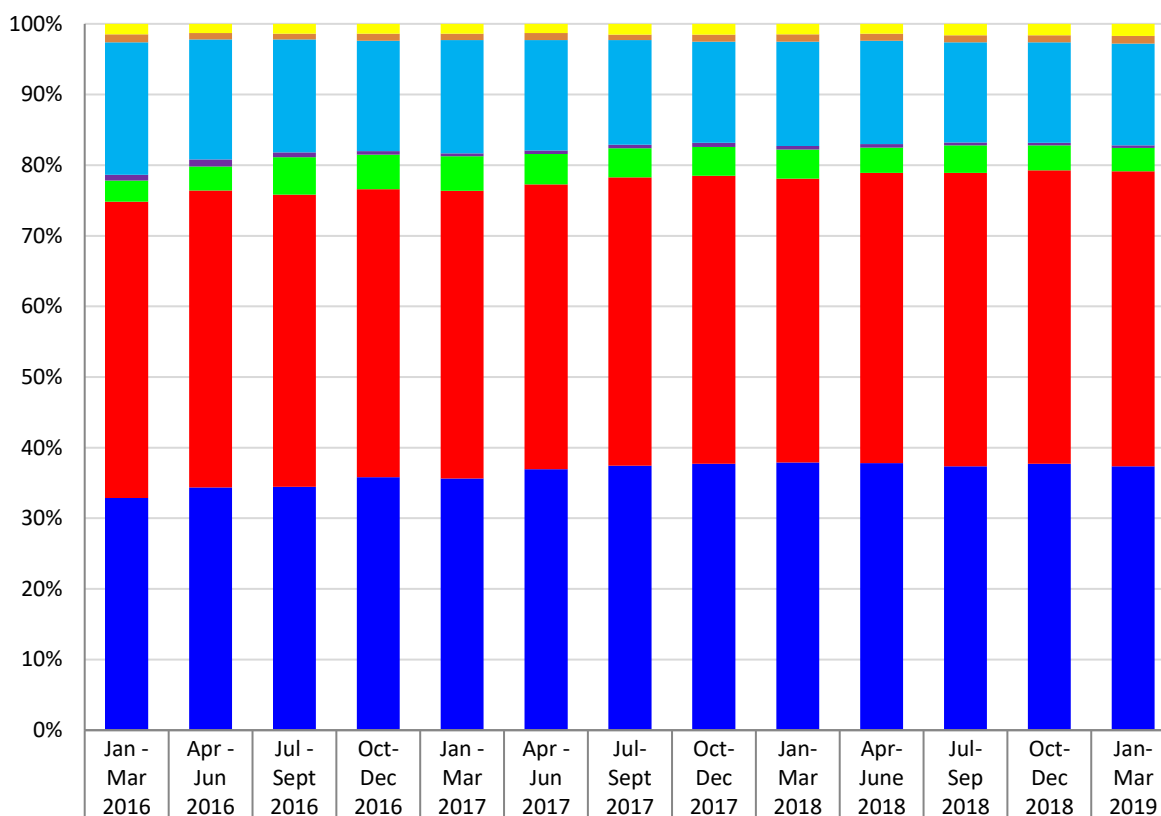
Data Source: AFCARS

Adoption: 24 Months or Less



Data Source: AFCARS

Child Welfare: Settings of Children in Care



"Supervised Independent Living" = those in an alternative transitional living arrangement where the child is under the supervision of the agency but without 24 hour adult supervision, is receiving financial support from the child welfare agency, and is in a setting which provides the opportunity for increased responsibility for self care.

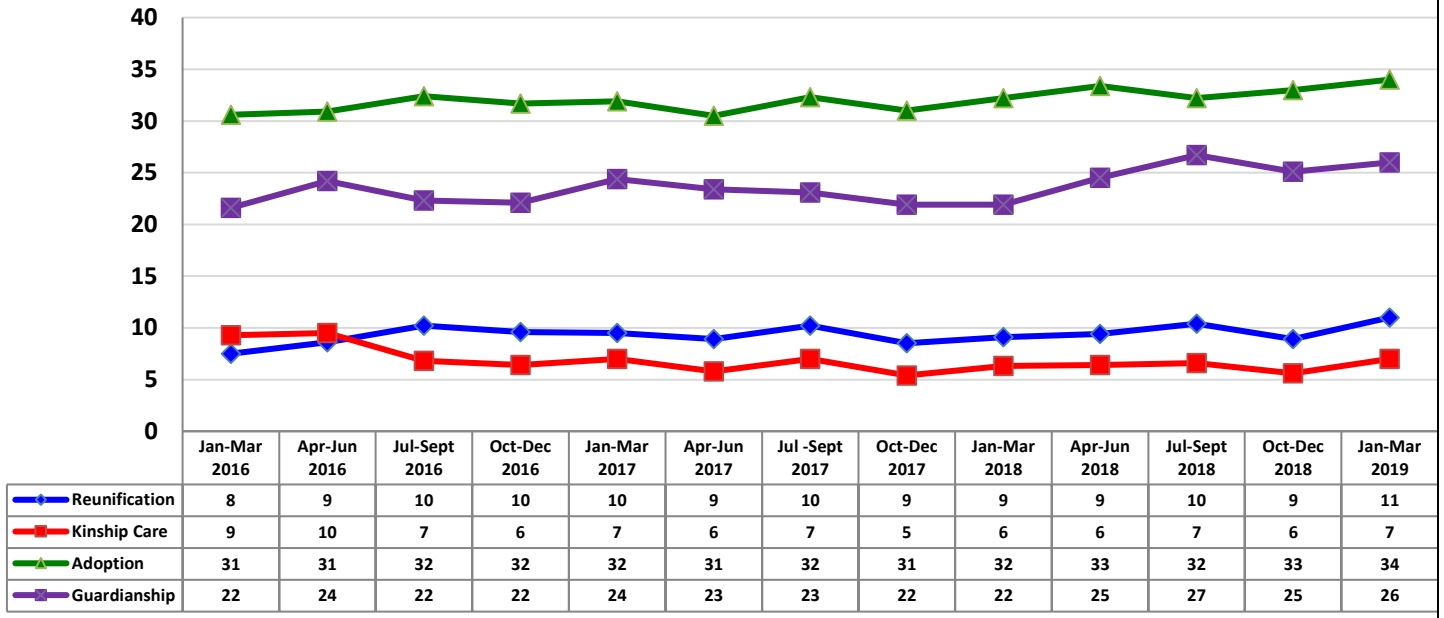
"Runaway" = those who have run away from the foster care setting.

"Residential Setting" = those placed in a group home or institution

"Home Setting" = those placed in pre-adoptive homes, Family Foster Home-relative, Family Foster Home-non-relative and trial home visits.

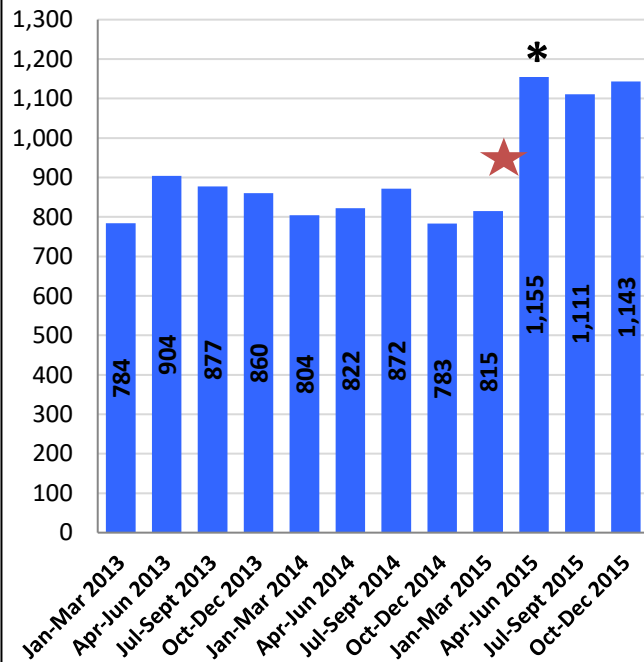
Data Source: AFCARS

**Average Number of Months from Latest Removal from Home
to Permanency Category**



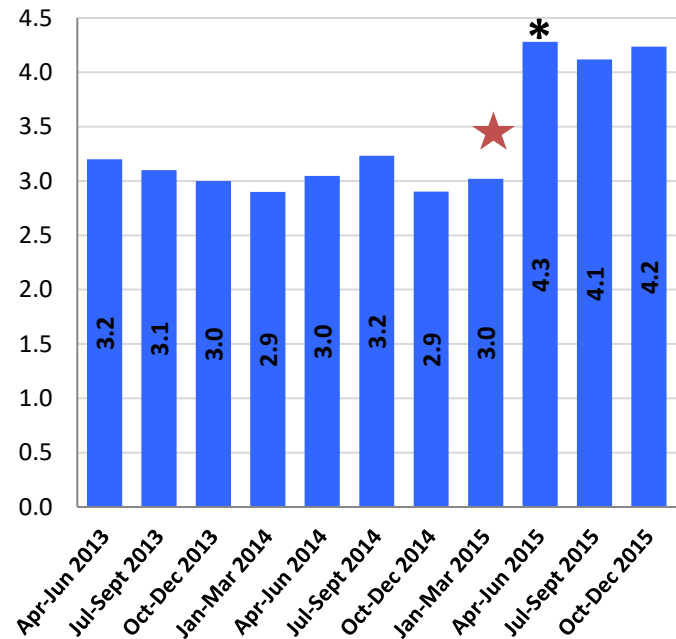
Data Source: AFCARS

**Substantiated Reports of Child Abuse/
Neglect in PA**



Data Source: Childline

**Rate per 10,000 Children of Substantiated
Reports of Child Abuse/Neglect in PA**



Data Source: Childline

* Increase due to new statutes requiring County Child Welfare agencies to complete an investigation and submit outcomes within 60 days.

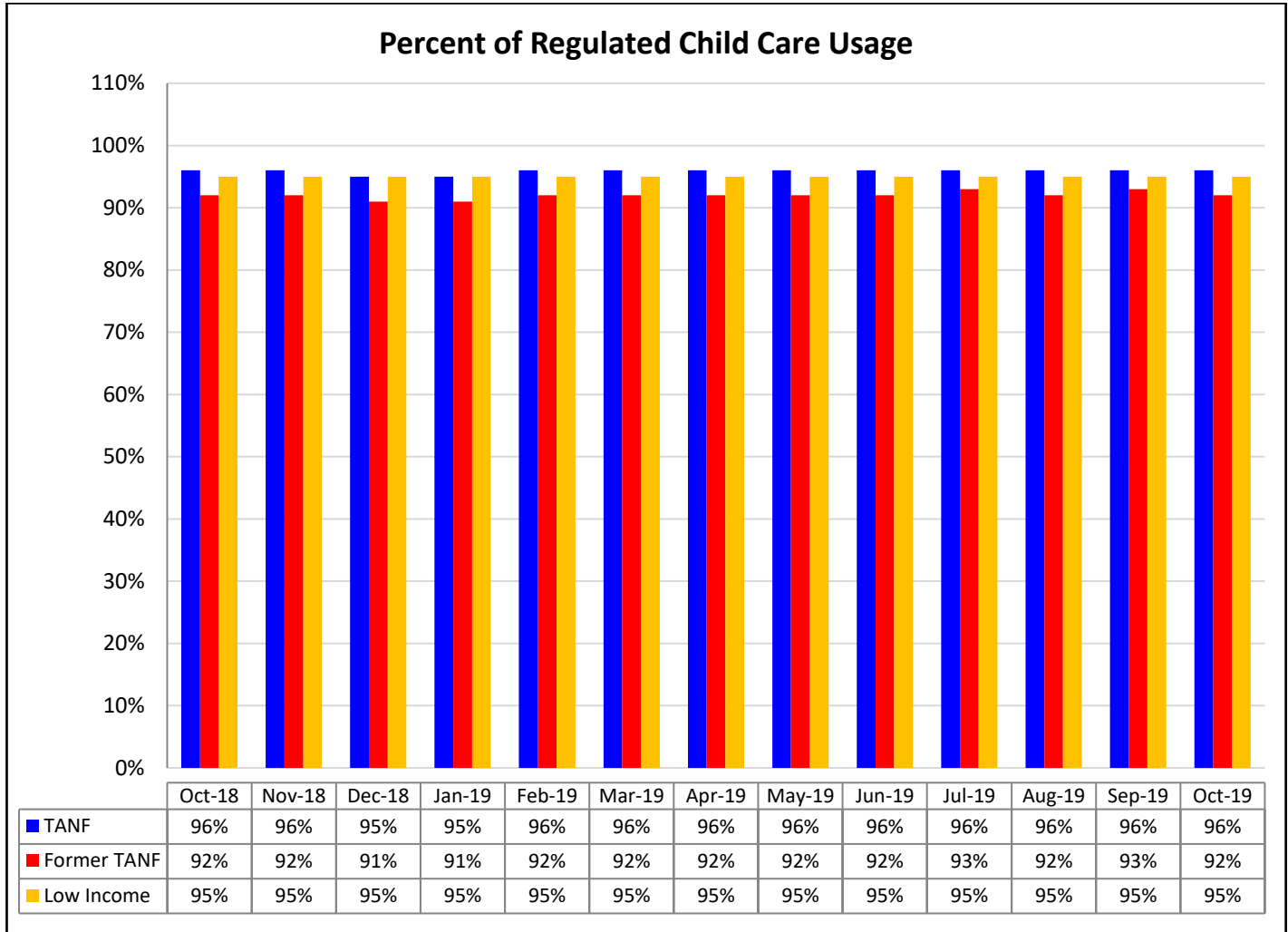
★ Data for January-March quarter is incomplete due to data conversion to new system

CHILD CARE AND EARLY LEARNING SERVICES

Child Care Subsidies	Number of Children Receiving* (October 2019)	Encumbrance (October 2019)	# on Waiting List (October 2019)
TANF	10,619	97%	0
Former TANF	33,381	102%	0
Low Income	69,681	103%	5,662

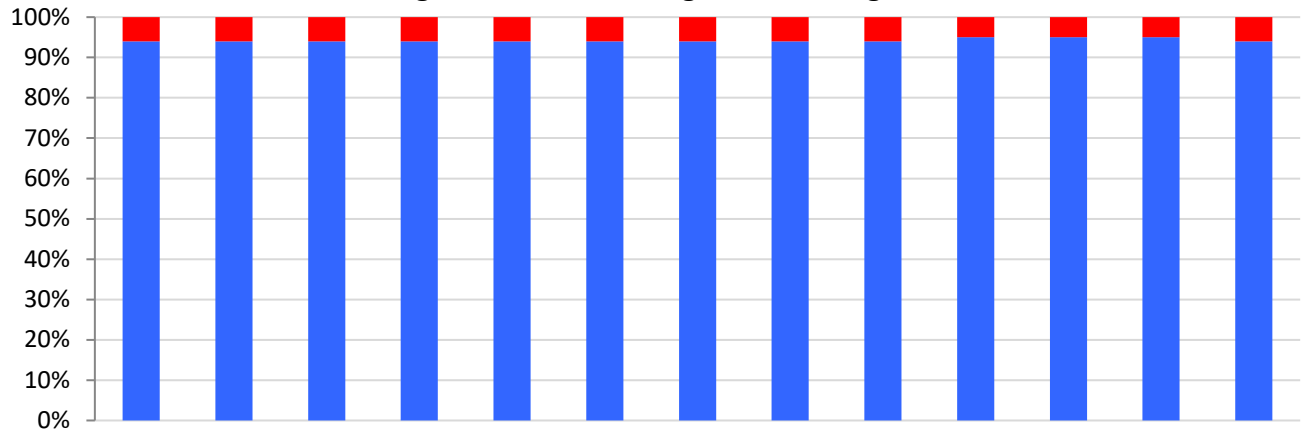
Data Sources: PELICAN CCW and PELICAN Child Care DW

*Preliminary Number – final number will be determined as additional data becomes available.



Data Source: PELICAN CCW

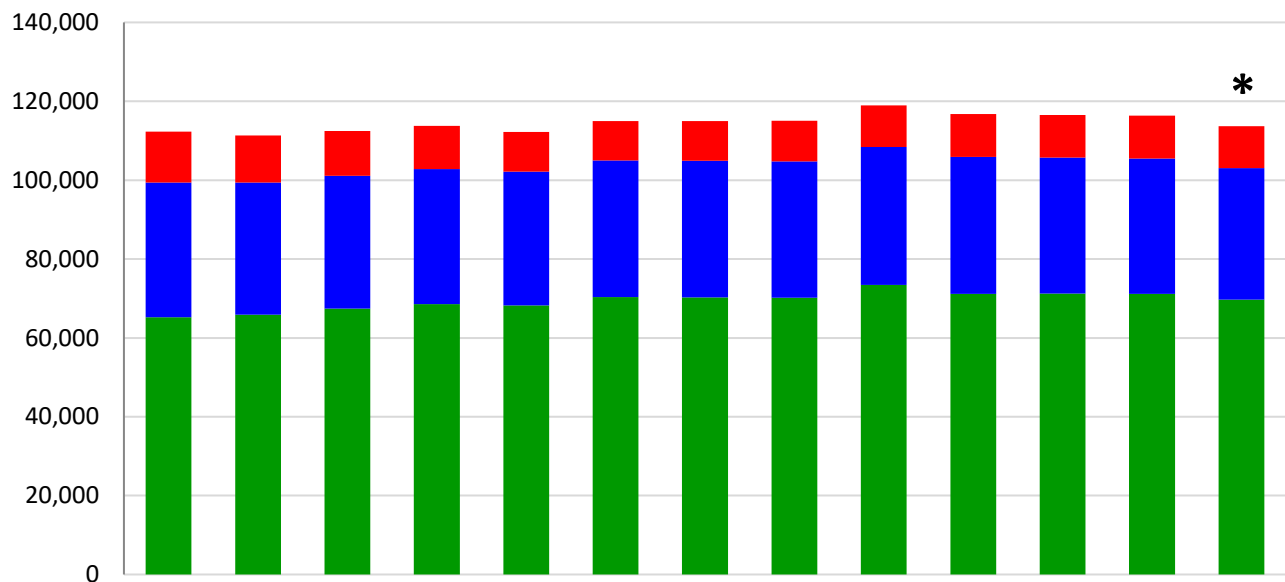
Percent of Children Receiving Subsidized Child Care in Regulated Versus Unregulated Settings



	Oct-18	Nov-18	Dec-18	Jan-19	Feb-19	Mar-19	Apr-19	May-19	Jun-19	Jul-19	Aug-19	Sep-19	Oct-19
■ Unregulated	6%	6%	6%	6%	6%	6%	6%	6%	6%	5%	5%	5%	6%
■ Regulated	94%	94%	94%	94%	94%	94%	94%	94%	94%	95%	95%	95%	94%

Data Source: PELICAN CCW

Children Receiving Subsidized Child Care



	Oct-18	Nov-18	Dec-18	Jan-19	Feb-19	Mar-19	Apr-19	May-19	Jun-19	Jul-19	Aug-19	Sep-19	Oct-19
■ TANF	12,861	11,967	11,359	10,954	10,074	9,965	10,051	10,284	10,623	10,871	10,740	10,857	10,619
■ Former TANF	34,179	33,510	33,664	34,212	33,913	34,638	34,647	34,586	34,929	34,680	34,560	34,310	33,381
■ Low Income	65,239	65,850	67,405	68,600	68,270	70,354	70,282	70,170	73,437	71,198	71,206	71,188	69,681

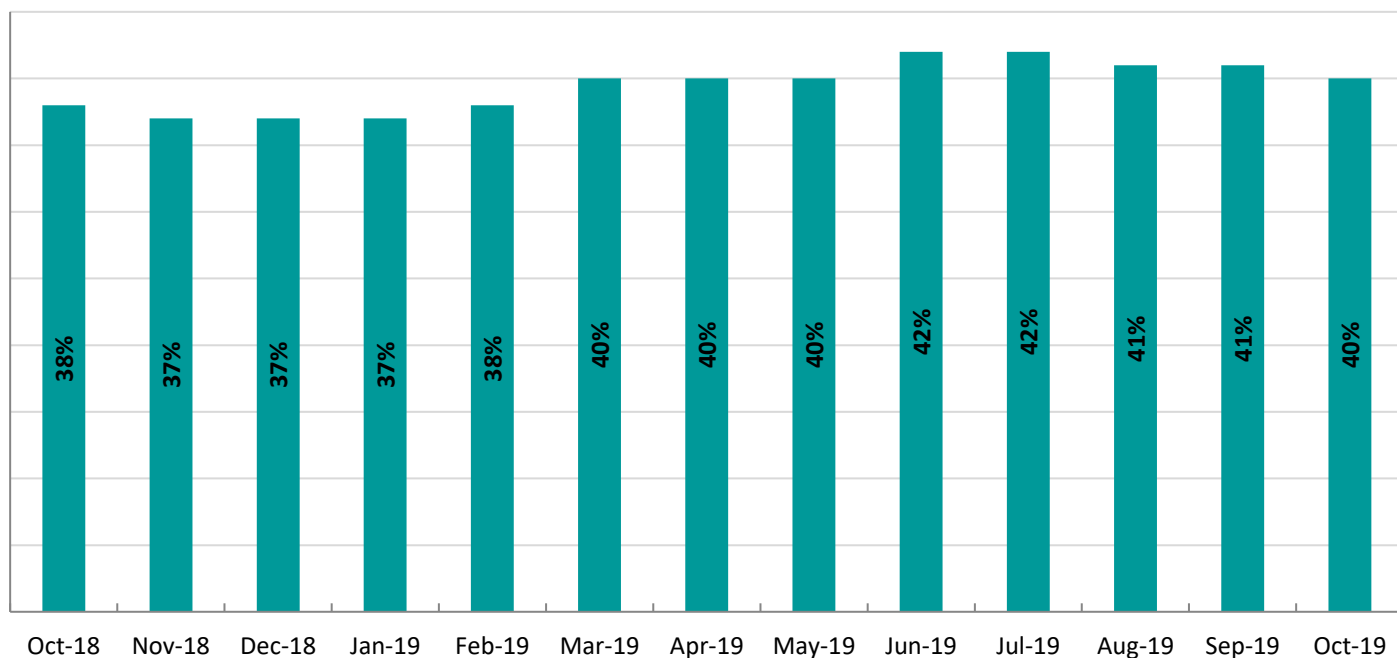
*Preliminary Numbers – final numbers will be determined as additional data becomes available Data Source: PELICAN CCW

NOTE: Beginning July 2012, number of children being served has decreased due to correction of a contractor error where children on the waiting list were being counted as receiving services.

Keystone STARS	Current	Historical
% of Keystone STARS Providers at STAR 3 or STAR 4	26% (October 2019)	26% (September 2019)

Data Source: PELICAN KTQ

Percent of PA Children in STARS 3 or 4 Providers



Data Source: PELICAN CCW

Infants, Toddlers, and Families Waiver and Early Intervention (0-3)	Current	Historical
Early Intervention Enrollment (1-day Count)	27,548 (Oct 2019)	27,372 (Sept 2019)
Early Intervention Enrollment (Unduplicated Total)	31,145 (Sept 2019)	20,078 (Aug 2019)
Waiver (Monthly Average)	3,422 (Oct 2019)	3,524 (Sept 2019)
Children Who Met EI Goals Prior to 3 rd Birthday	326 (13%) (Oct 2019)	408 (15%) (Sept 2019)

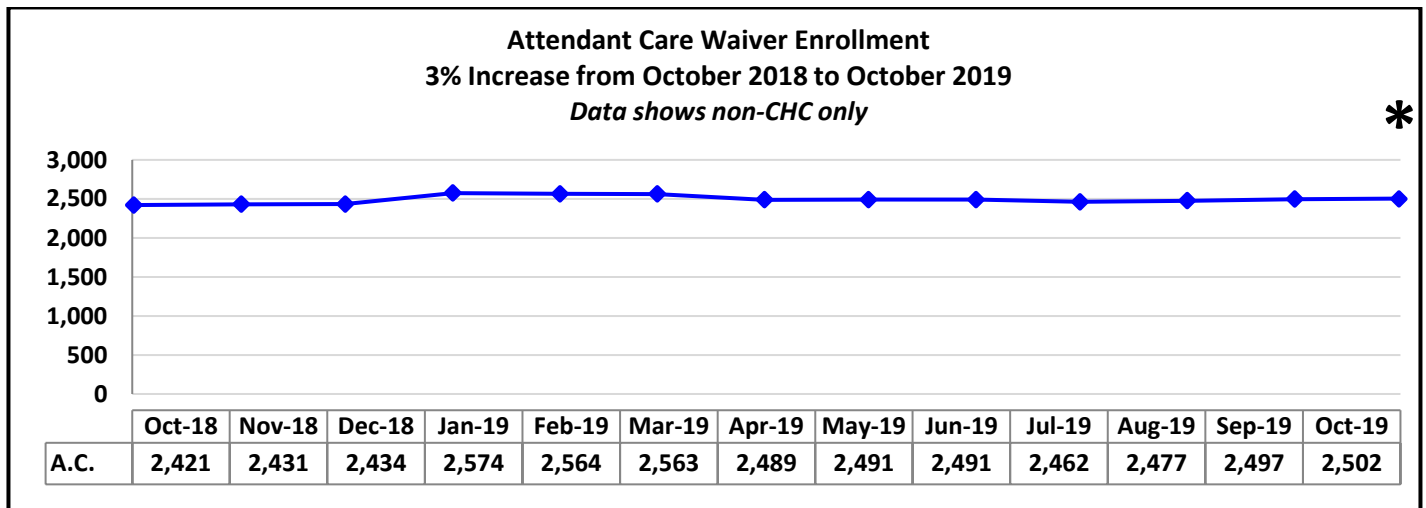
Data Sources: HCSIS DW, EI Ad Hoc Reporting Tool

Early Intervention Enrollment – The total number of children currently receiving services and supports through the EI program. The count of children (birth to three) who have a 25% delay in one or more of the following areas: cognitive development; physical development including vision and hearing; communication development; social or emotional development; or adaptive development.

ITF Waiver Enrollment – The total number of children currently receiving services and supports through the Infants, Toddlers, and Families Waiver. The count of children (birth to three) who are eligible for Medical Assistance, have a 50% delay in one area or 33% delay in two areas, and receive services in the home or a community setting.

Early Intervention Children Who Met EI Goals Prior to 3rd Birthday – Of children receiving early intervention services between the ages of zero and three, the number who meet their developmental goals by their 3rd birthday.

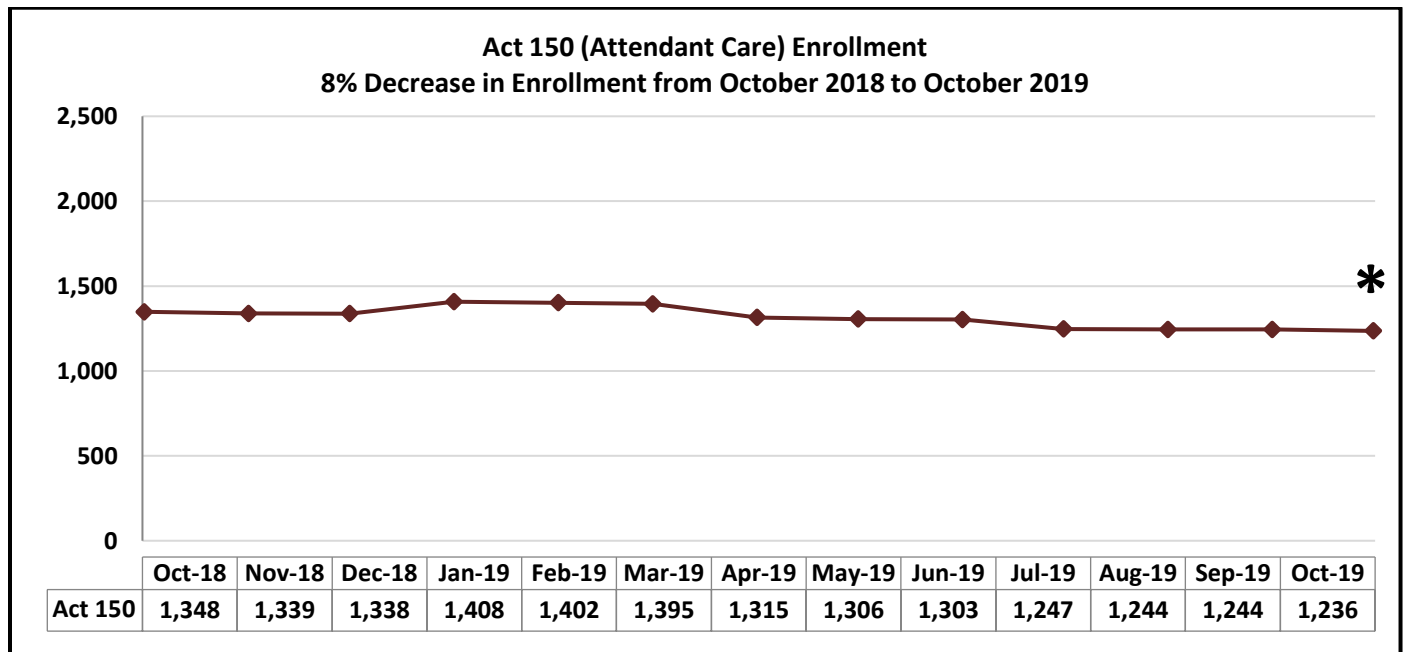
LONG TERM SUPPORTS FOR PERSONS WITH DISABILITIES AND OLDER PENNSYLVANIANS



Source: DHS Enterprise Data Warehouse

***Preliminary Number – will be updated as additional data becomes available**

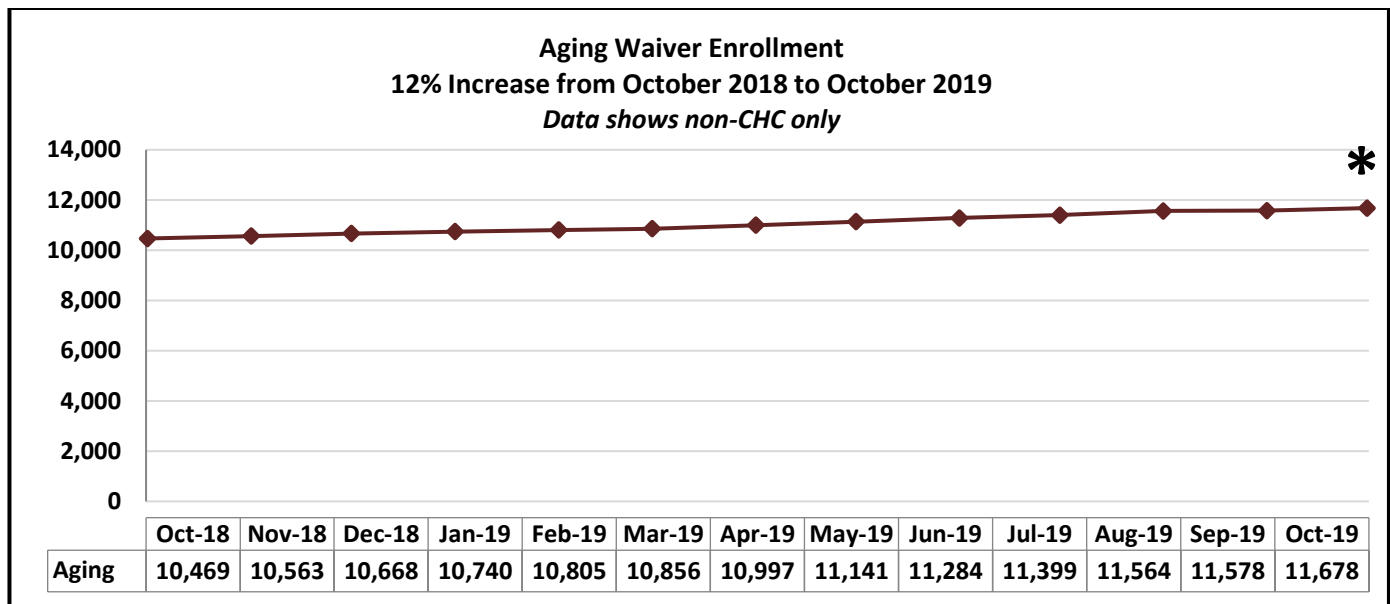
This data is for those in the T Region Fee for Service enrollment (Lehigh, CAP, Northeast, and Northwest)
Point-in-time (last day of month) count of unduplicated participants with an Approved Service Plan in DHS's case management system.
This waiver provides service coordination, personal assistance and personal emergency response system to individuals with physical disabilities, age 18 through 59, who are mentally alert. This waiver also provides community transition services. Participants must be Nursing Facility Clinically Eligible (NFCE).



Source: DHS Enterprise Data Warehouse

***Preliminary Number – will be updated as additional data becomes available**

Data is for statewide Fee for Service enrollment only.
Point-in-time (last day of month) count of unduplicated participants with an Approved Service Plan in DHS's case management system.
The Act 150 provides service coordination, personal assistance and personal emergency response system to individuals with physical disabilities, age 18 through 59, who are mentally alert. This waiver also provides community transition services. This is a state funded program. Participants must be NFCE but are not financially eligible for Medicaid.



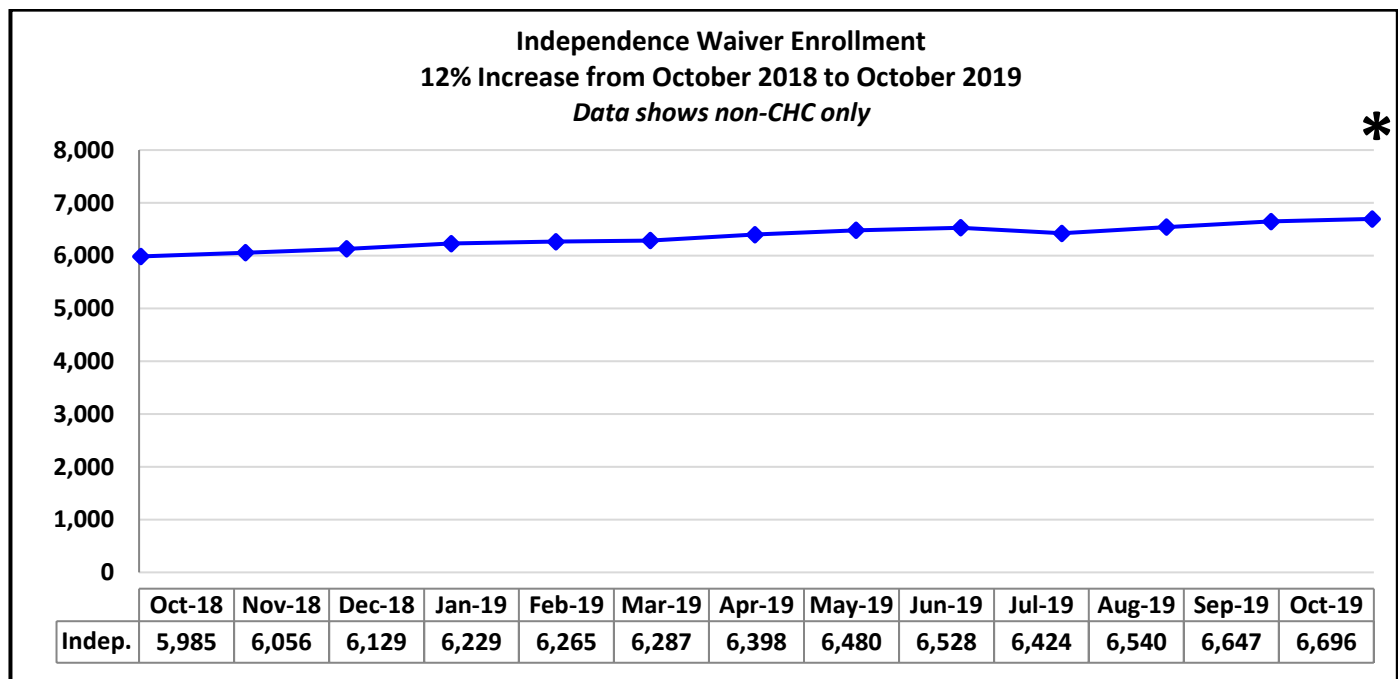
Source: DHS Enterprise Data Warehouse

***Preliminary Number – will be updated as additional data becomes available**

This data is for those in the T Region Fee for Service enrollment (Lehigh, CAP, Northeast, and Northwest)

Point-in-time (last day of month) count of unduplicated participants with an Approved Service Plan in DHS's case management system.

This waiver provides Home and community-based services for individuals 60 years of age or over who are NFCE.



Source: DHS Enterprise Data Warehouse

***Preliminary Number – will be updated as additional data becomes available**

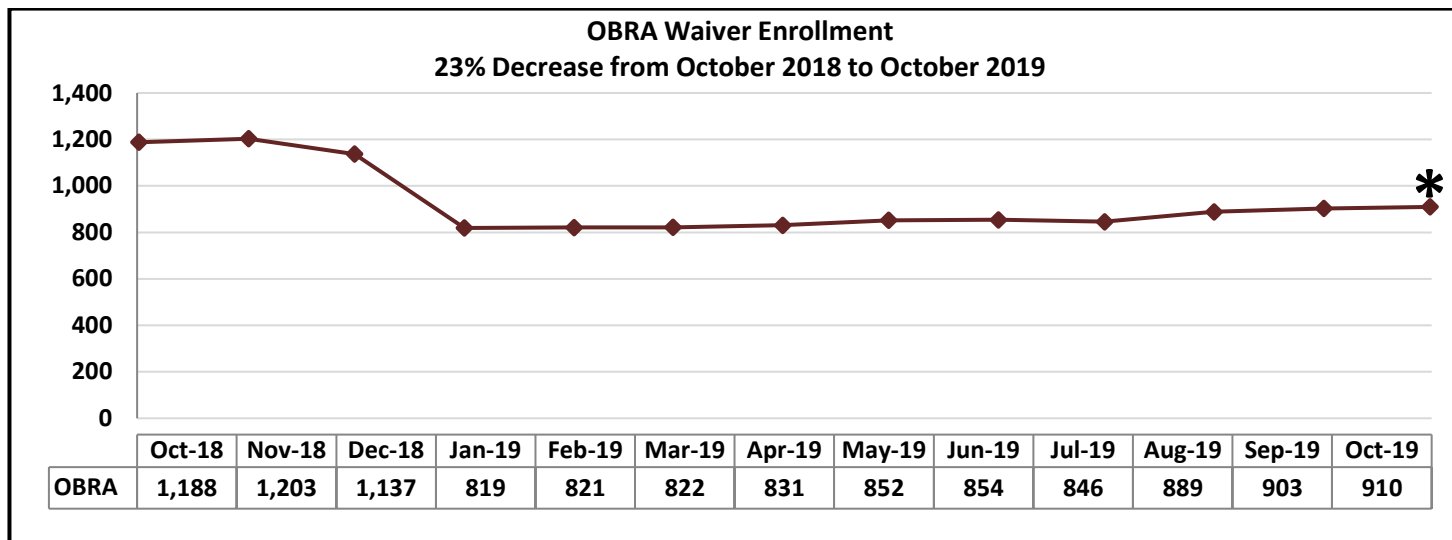
This data is for those in the T Region Fee for Service enrollment (Lehigh, CAP, Northeast, and Northwest)

Point-in-time (last day of month) count of unduplicated participants with an Approved Service Plan in DHS's case management system.

This waiver provides services to disabled adults age 18 through 60, who are NFCE. The individual's disability must result in at least three substantial functional limitations and expected to continue indefinitely.

Point-in-time (last day of month) count of unduplicated participants with an Approved Service Plan in DHS's case management system.

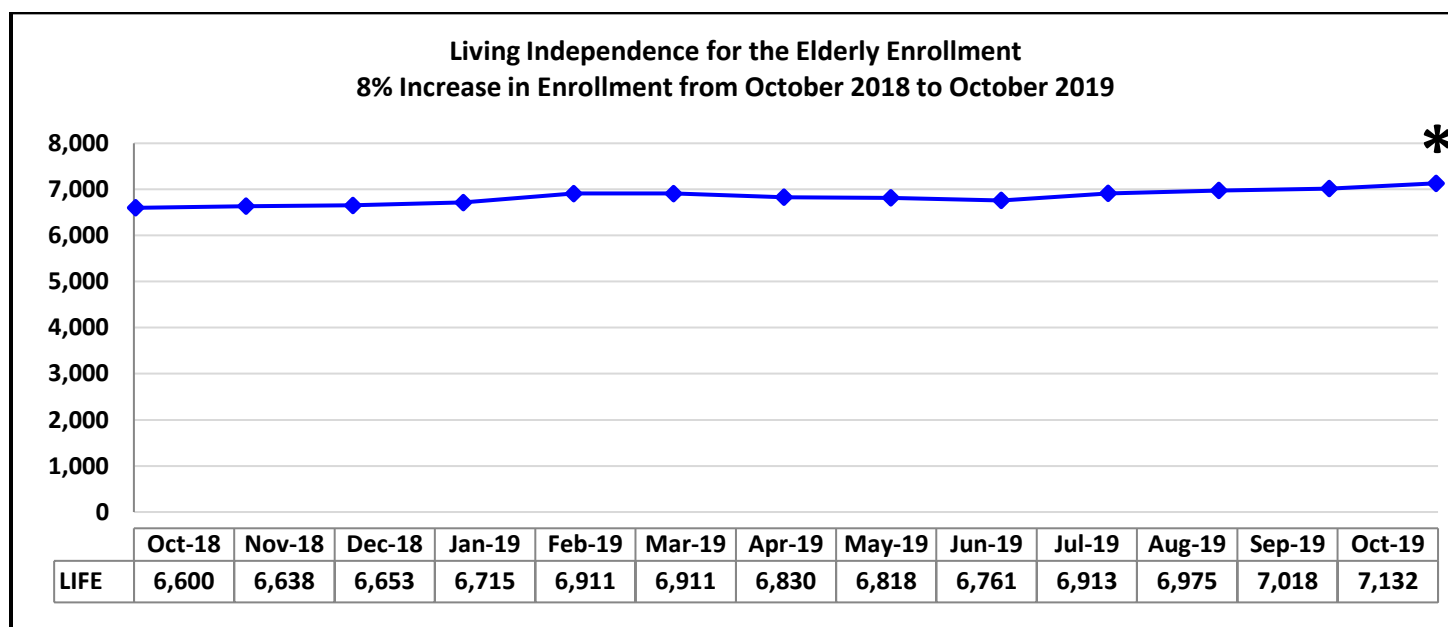
This waiver provides services to disabled adults age 18 through 60, who are NFCE. The individual's disability must result in at least three substantial functional limitations and expected to continue indefinitely.



Source: DHS Enterprise Data Warehouse

***Preliminary Number – will be updated as additional data becomes available**

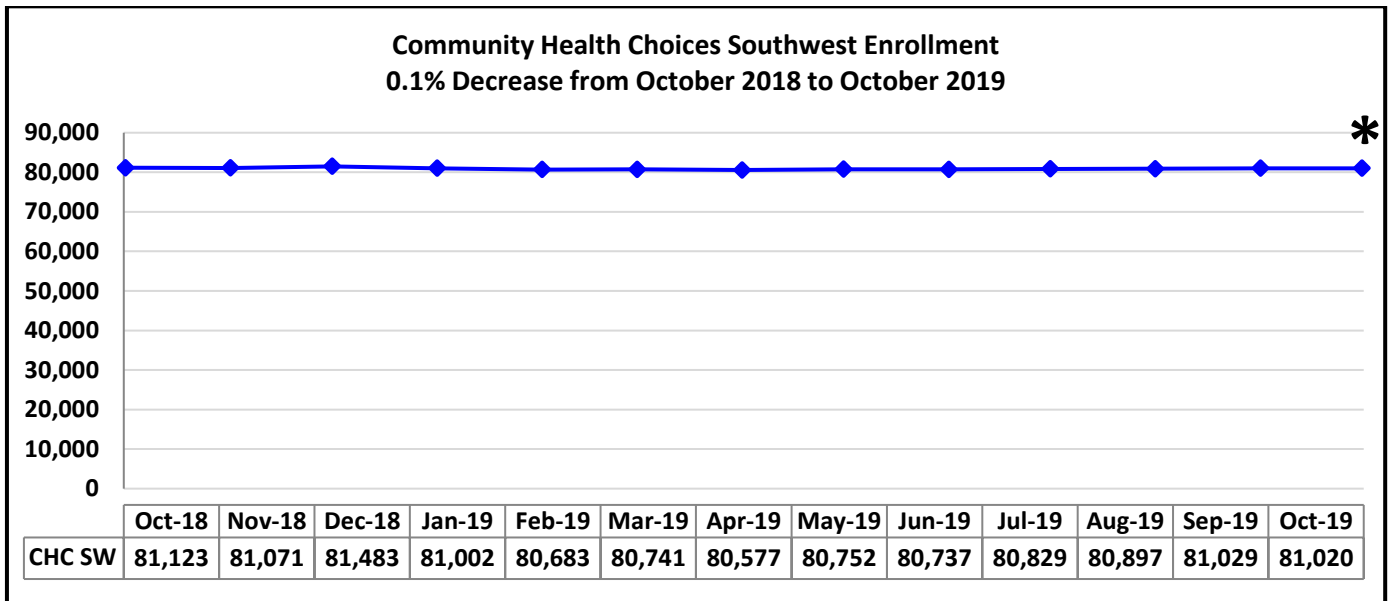
Starting in January 2019, individuals in this waiver were moved into the Community Health Choices Waiver in the Southeast. Point-in-time (last day of month) count of unduplicated participants with an Approved Service Plan in DHS's case management system. This waiver provides services to recipients who have developmental physical disabilities which results in at least three substantial functional limitations, age 18 through 59; disability manifested prior to age 22, and the disability is expected to continue indefinitely; requires ICF/ORC level of care.



Source: DHS Enterprise Data Warehouse

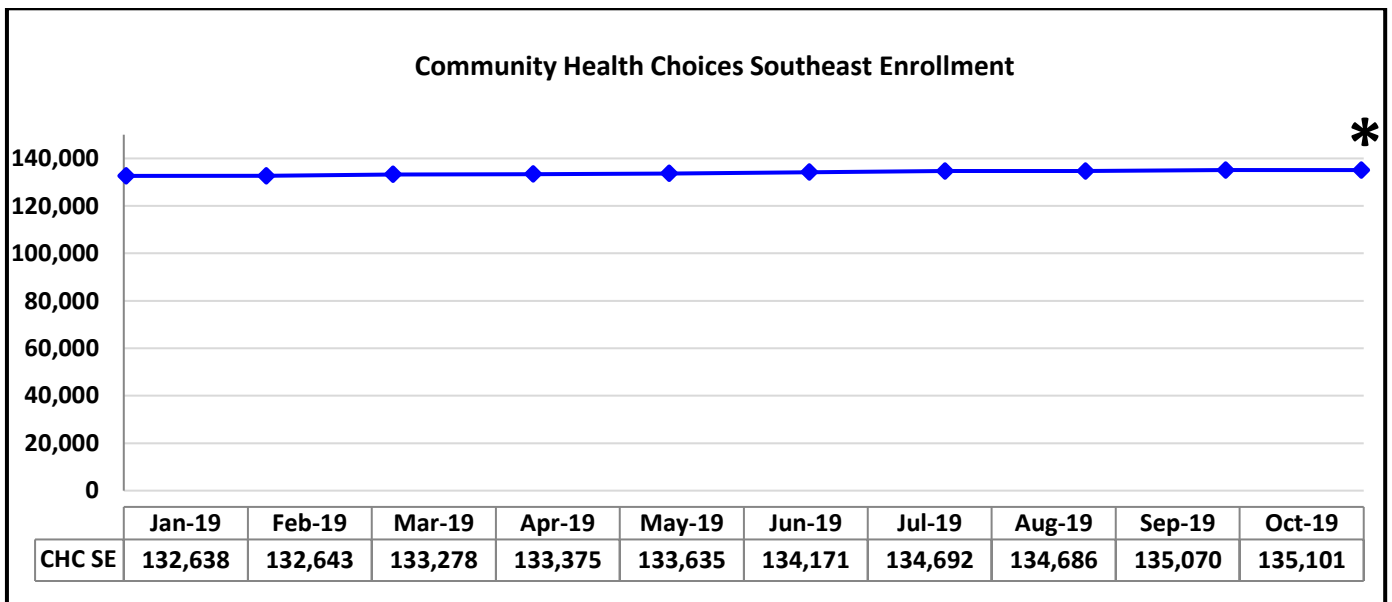
***Preliminary Number – will be updated as additional data becomes available.**

Unduplicated count of recipients which had claims in the month requested. LIFE is a managed care program and provides a comprehensive all-inclusive package of services for Pennsylvanians age 55 or older who meet the level of care needs for a Skilled Nursing Facility or a Special Rehabilitation Facility to enable them to maintain independence in their homes for as long as possible. Be age 55 or older, meet NFCE or a special rehabilitation facility, reside in an area served by a LIFE provider and be able to be safely served in the community as determined by a LIFE provider.



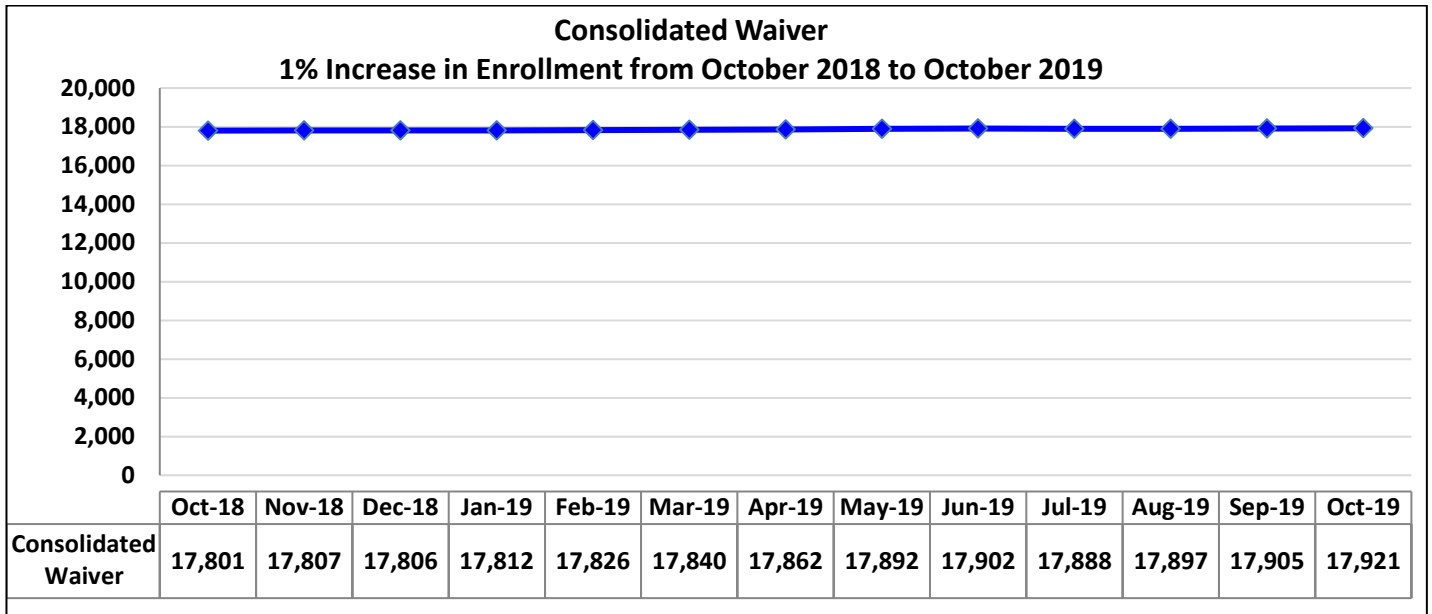
***Preliminary Number – will be updated as additional data becomes available**

CHC includes individuals who are 21 years of age or older and dually eligible for Medicare and Medicaid, and Individuals who are 21 years of age or older and eligible for Medicaid (LTSS) because they need the level of care provided by a nursing facility.



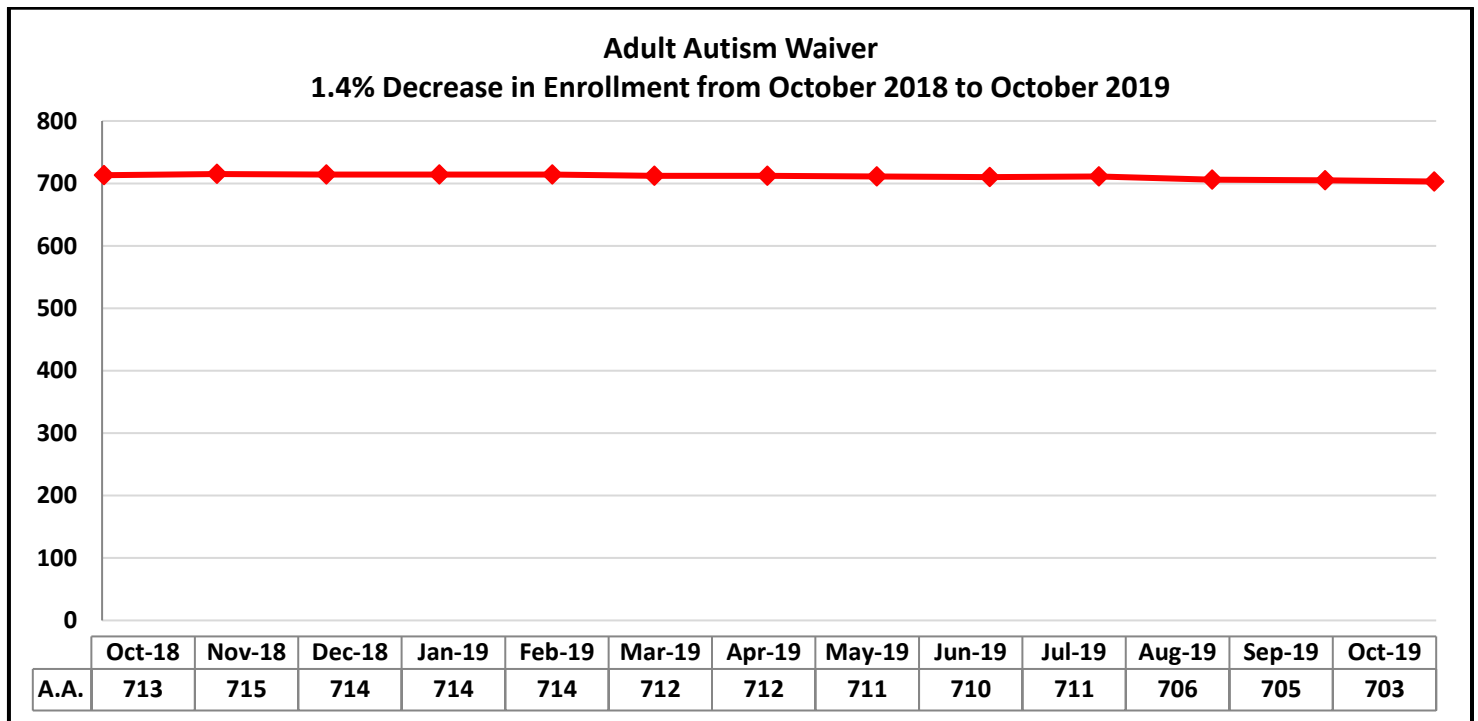
***Preliminary Number – will be updated as additional data becomes available**

CHC includes individuals who are 21 years of age or older and dually eligible for Medicare and Medicaid, and Individuals who are 21 years of age or older and eligible for Medicaid (LTSS) because they need the level of care provided by a nursing facility.



Source: DHS Enterprise Data Warehouse

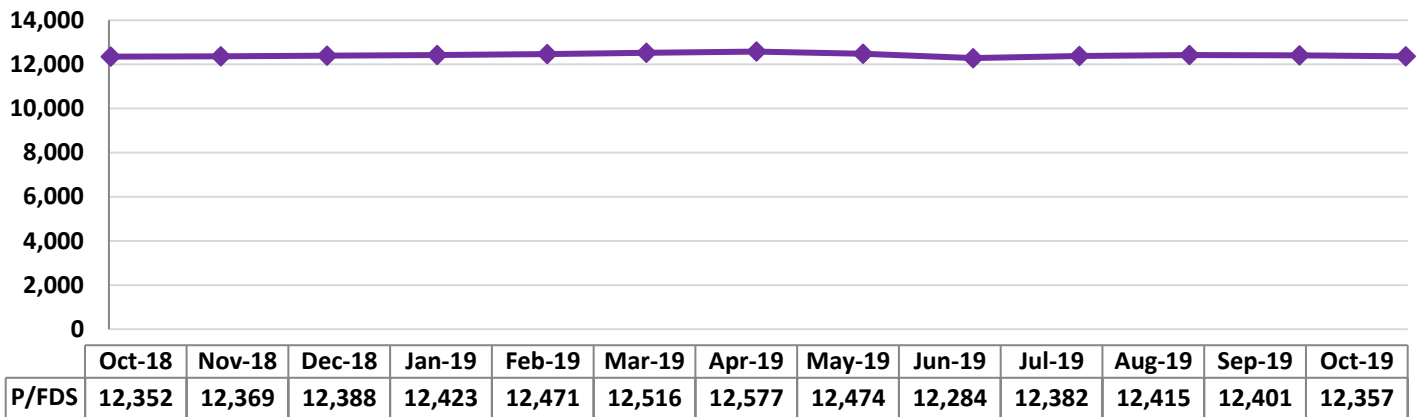
Provides home and community services, including supports coordination and environmental accessibility adaptations, for individuals with intellectual disabilities who require an intermediate care facility level of care.



Source: DHS Enterprise Data Warehouse

Provides home and community services to persons, age 21 and over, with autism spectrum disorder to help them participate in their communities.

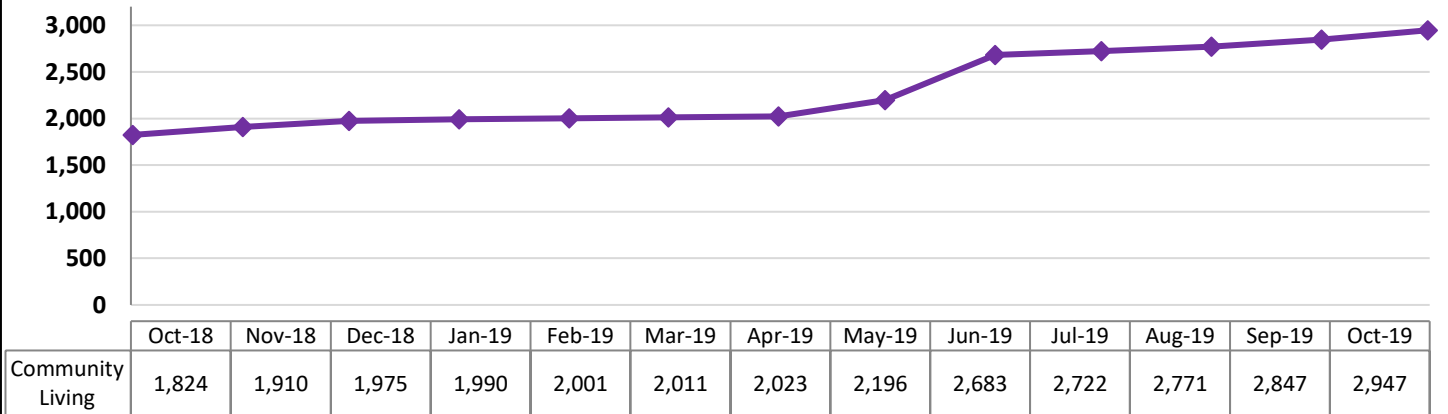
Person/Family Directed Support Waiver
0% Change in Enrollment from October 2018 to October 2019



Source: DHS Enterprise Data Warehouse

Provides a limited array of services and supports, such as therapy and nursing and personal support, to individuals with intellectual disabilities who require an intermediate care facility level of care. Aimed primarily at those residing in their homes or with family members.

Community Living Waiver
62% Increase in Enrollment from October 2018 to October 2019



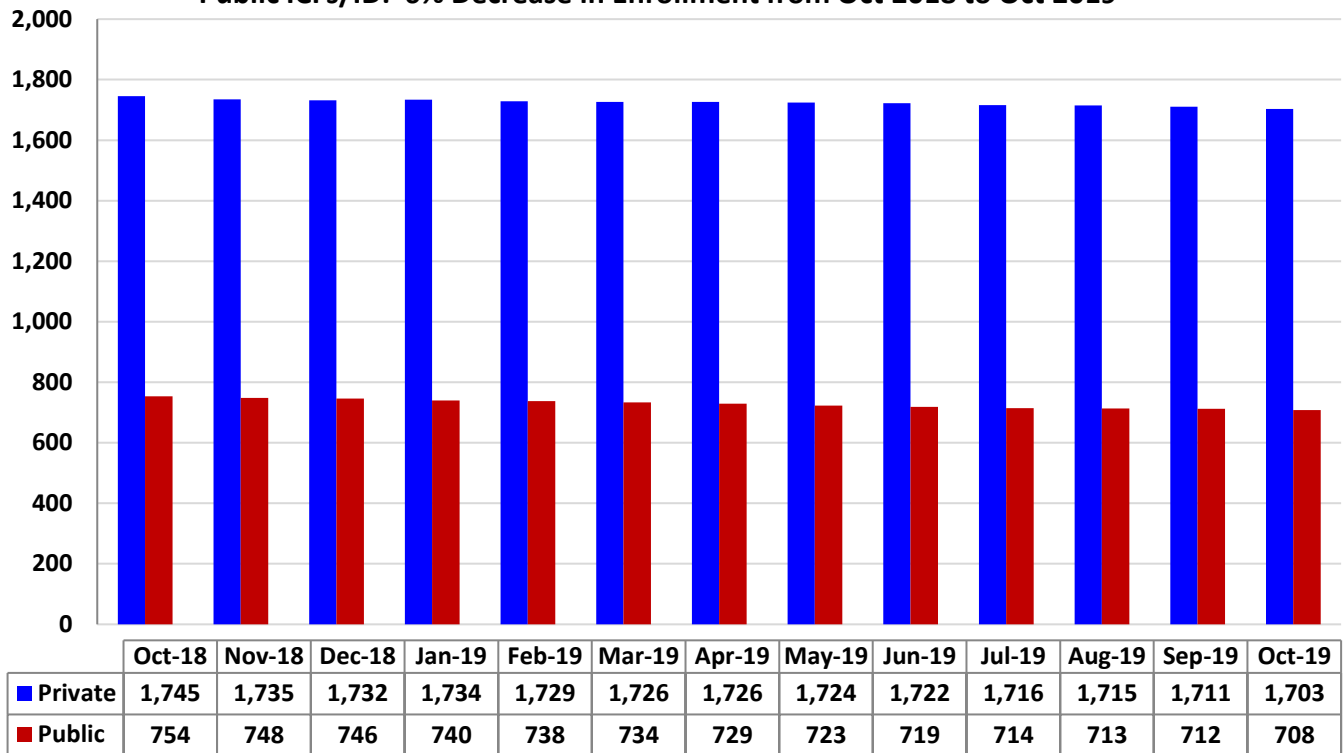
Source: DHS Enterprise Data Warehouse

The Community Living Waiver is a new waiver that became effective in January 2018. It will support individuals to live more independently in their homes and communities through the provision of a variety of services that promote community living, employment, communication, self-direction, choice and control.

**Residents in Intermediate Care Facilities for Persons with Intellectual Disabilities
(Last Day of Month)**

Private ICFs/ID: 2% Decrease in Enrollment from Oct 2018 to Oct 2019

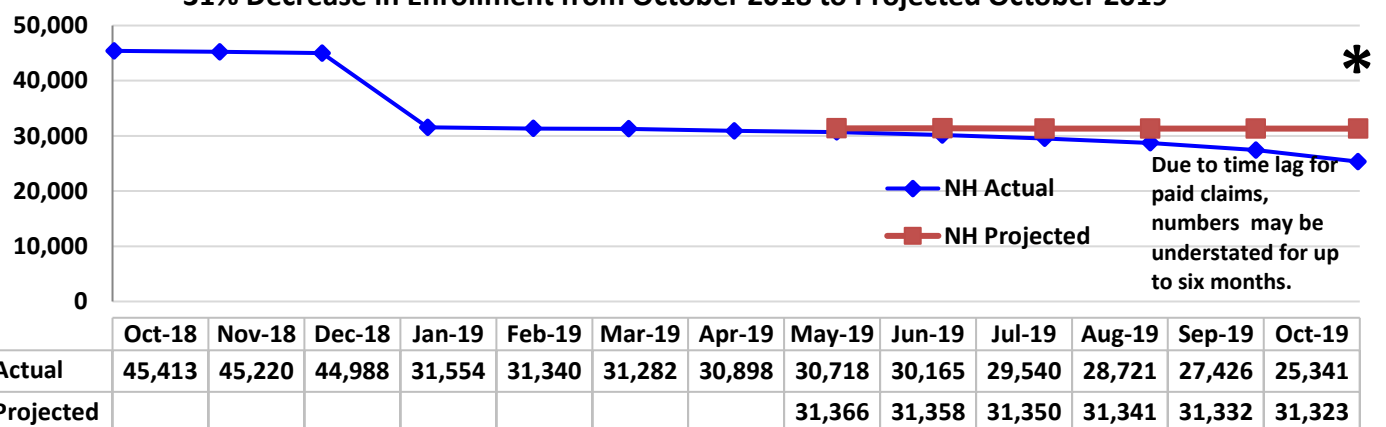
Public ICFs/ID: 6% Decrease in Enrollment from Oct 2018 to Oct 2019



Source: DHS Enterprise Data Warehouse and Mapper/FACT system

**Nursing Home Population in Fee for Service
Does not include CHC***

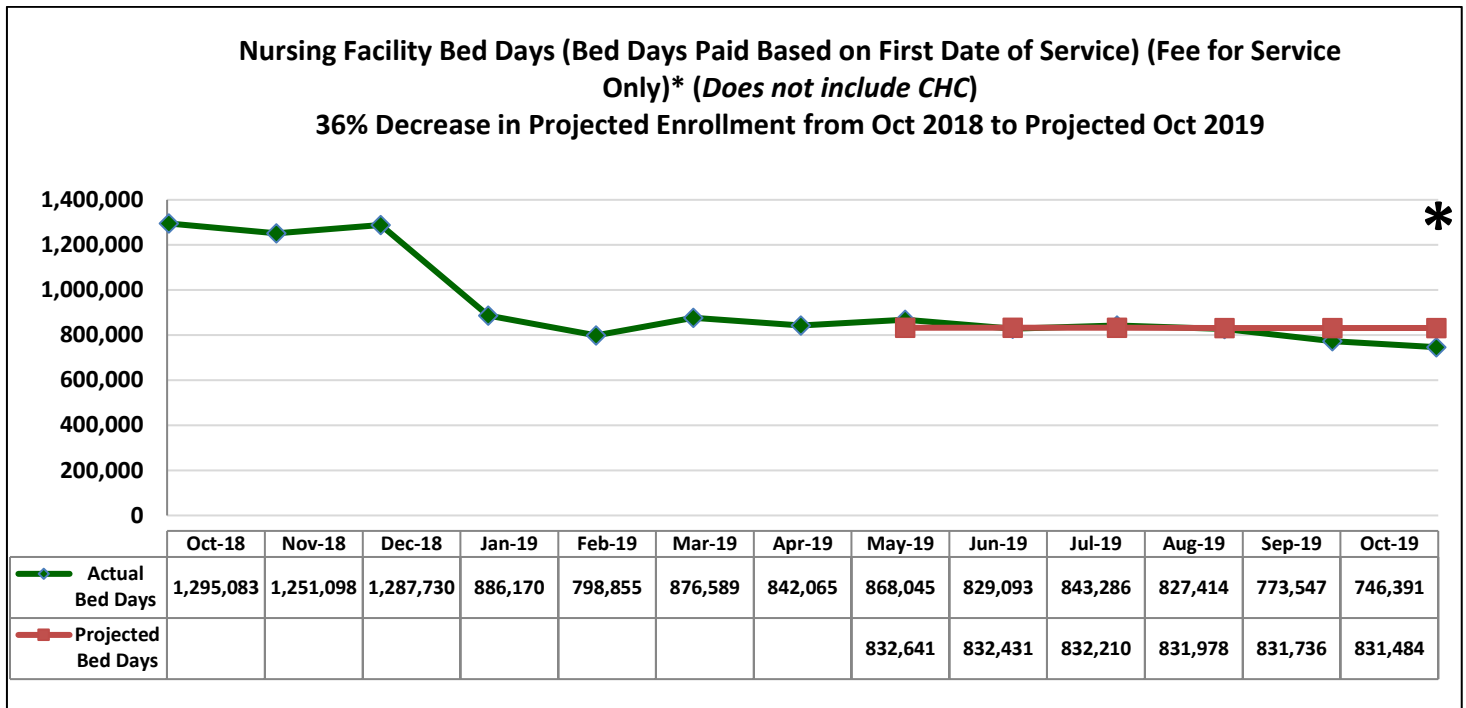
31% Decrease in Enrollment from October 2018 to Projected October 2019



Source: EDW PROMISE Claims

*Based upon paid claims data with a first date of service within the reporting period (i.e. numbers show persons actually receiving services during that month). Lower numbers are due, in part, to a time lag for paid claims; providers have up to six months to bill. Numbers may, therefore, be understated for a period of six months.

Starting in January 2019, individuals in this waiver were moved into the Community Health Choices Waiver in the Southeast.



Source: EDW PROMISE Claims

*Facility Bed Days are calculated as facility days + leave days + 1/3 hospital days. Based on paid claims first date of service. Due to the 6 month billing lag, this number is not mature yet. This number will continue to increase as data is refreshed each month.

Starting in January 2019, individuals in this waiver were moved into the Community Health Choices Waiver in the Southeast.

OTHER METRICS

Third Party Liability

	Previous Month	Current Month	FYTD
Recoveries (Casualty, Estate, Health Insurance and HMS)	\$12,645,626 (July 2019)	\$18,115,766 (August 2019)	\$30,761,392
Cost Avoidance (HIPP and Health Insurance)	\$26,017,767 (July 2019)	\$22,625,257 (August 2019)	\$48,643,024

Data Source: TPL Financial Accounting System

Bureau of Program Integrity

	Current Month	FYTD
Provider Review Overpayment Recoveries	\$633,342 (August 2019)	\$1,441,937
Audit Contractor (RAC-CGI) Provider Review Recoveries	N/A (August 2019)	N/A
Recipient Restriction Cost Avoidance*	\$1,901,700 (August 2019)	\$3,831,300

Data Source: DHS Executive Dashboard