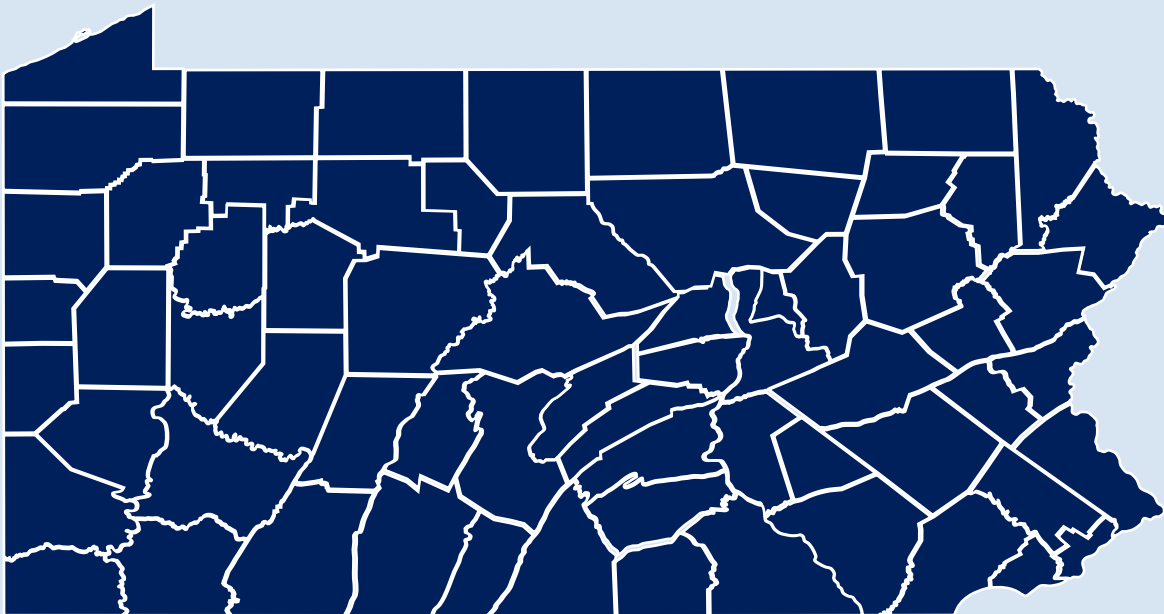




pennsylvania
DEPARTMENT OF HUMAN SERVICES



MONTHLY DATA REPORT

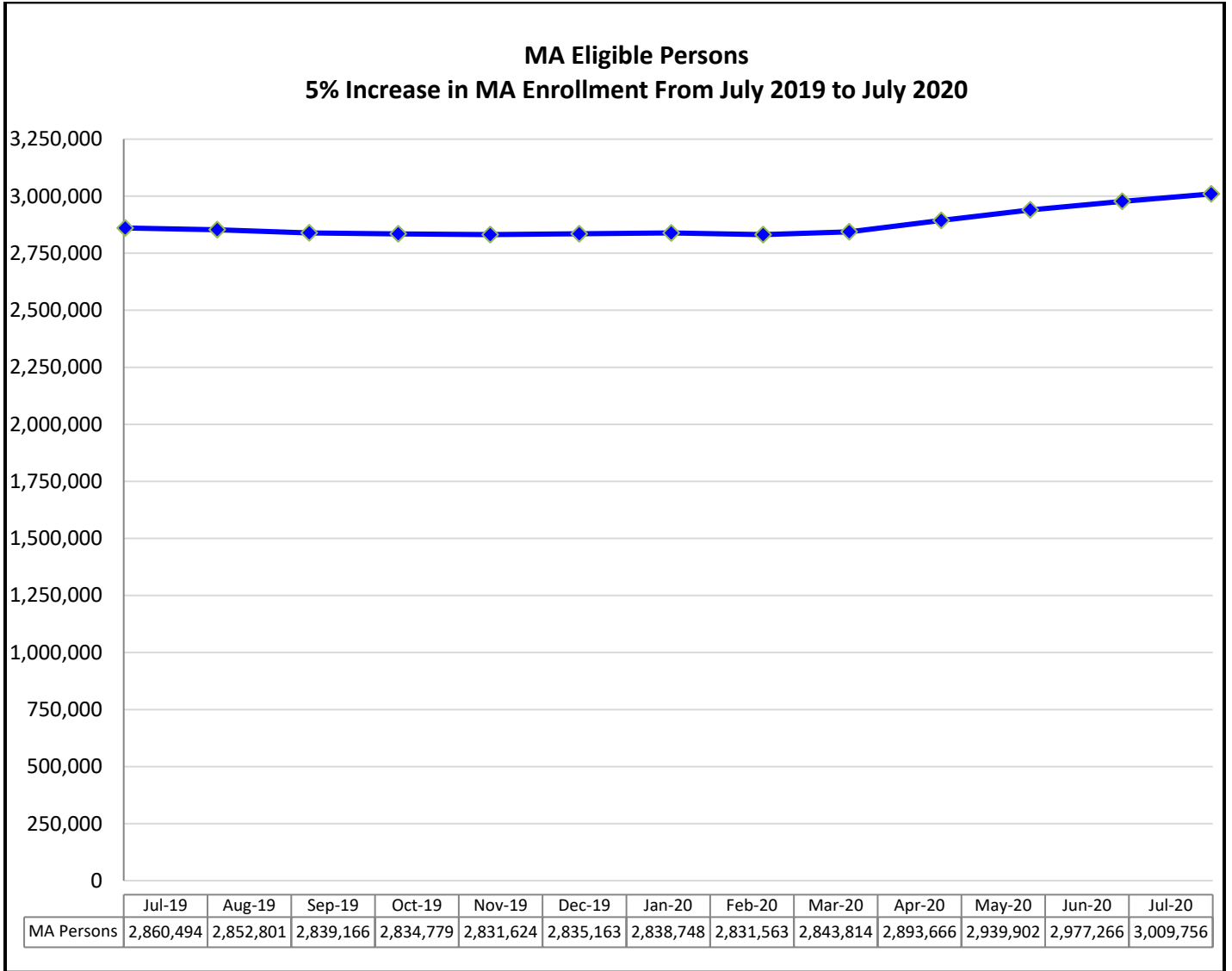
JULY 2020

TABLE OF CONTENTS

CTRL+Click on one of the major headings below will link you to that section.

MEDICAL ASSISTANCE AND OTHER HEALTH CARE SERVICES.....	2
MA Eligible Persons	2
MA Children and CHIP	3
State Hospital Admissions/Census	4
BENEFIT ASSISTANCE PROGRAMS FOR CHILDREN AND FAMILIES	5
TANF Individuals	5
Number and Percent: Non-disabled TANF Adults Working	6
Number and Percent: Non-disabled TANF Adults Working/Training 20 or More Hours/Week	6
TANF Workforce Participation Rates	7
TANF Budgets Leaving for Employment	8
Individuals on TANF by Length of Time	9
SNAP Eligible Persons	10
Non-disabled SNAP Adults Working	11
SSI Adults and Children.....	12
Child Support Measures	12
CHILD WELFARE SERVICES.....	13
Monthly YDC Admissions.....	13
Children in Out-of-Home Care - More or Less than 12 Months.....	13
Children Entering/Re-entering Out-of-Home Care	13-14
Adoption/ Discharges to Guardianship	14
Settings of Children in Care	15
Months from Removal from Home to Permanency	16
Child Abuse - Cases and Rates	16
CHILD CARE AND EARLY LEARNING SERVICES	17
Child Care Subsidies-Enrollment-Waiting List.....	17
Regulated Child Care Usage.....	17
Subsidized Child Care: Regulated vs. Unregulated Settings.....	18
Children in STARS 3 or 4.....	19
ITF Waiver and EI: Enrollment	19
LONG TERM SUPPORTS FOR PERSONS WITH DISABILITIES AND OLDER PENNSYLVANIANS	19
Waiver Enrollments (OLTL):	
Act 150	19
OBRA	19
LIFE.....	20
Community Health Choices.....	20
Wavier Enrollments (ODP):	
Consolidated and Adult Autism.....	22
P/FDS and Community Living	23
Intermediate Care Facilities: Enrollments	24
OTHER METRICS	24

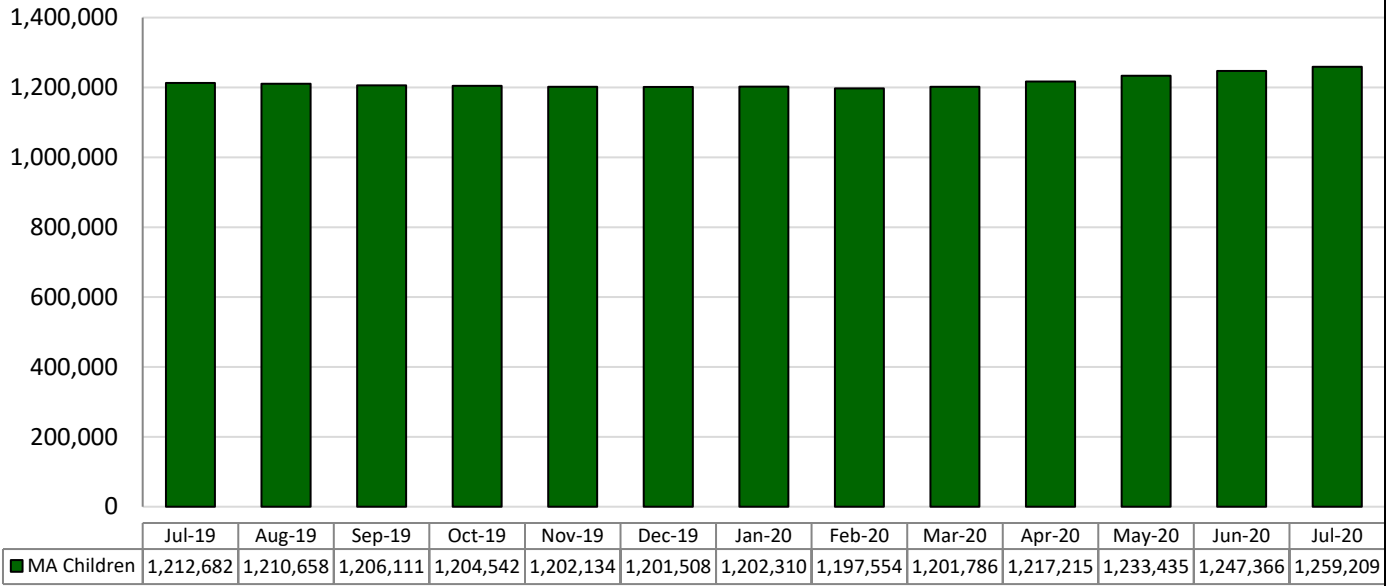
MEDICAL ASSISTANCE AND OTHER HEALTH CARE SERVICES



Data Source: DHS ListServ

NOTE: MA numbers now reflect data pulled on the second Tuesday of the month after the reported month. Previous months are not updated to show retroactive eligibility.

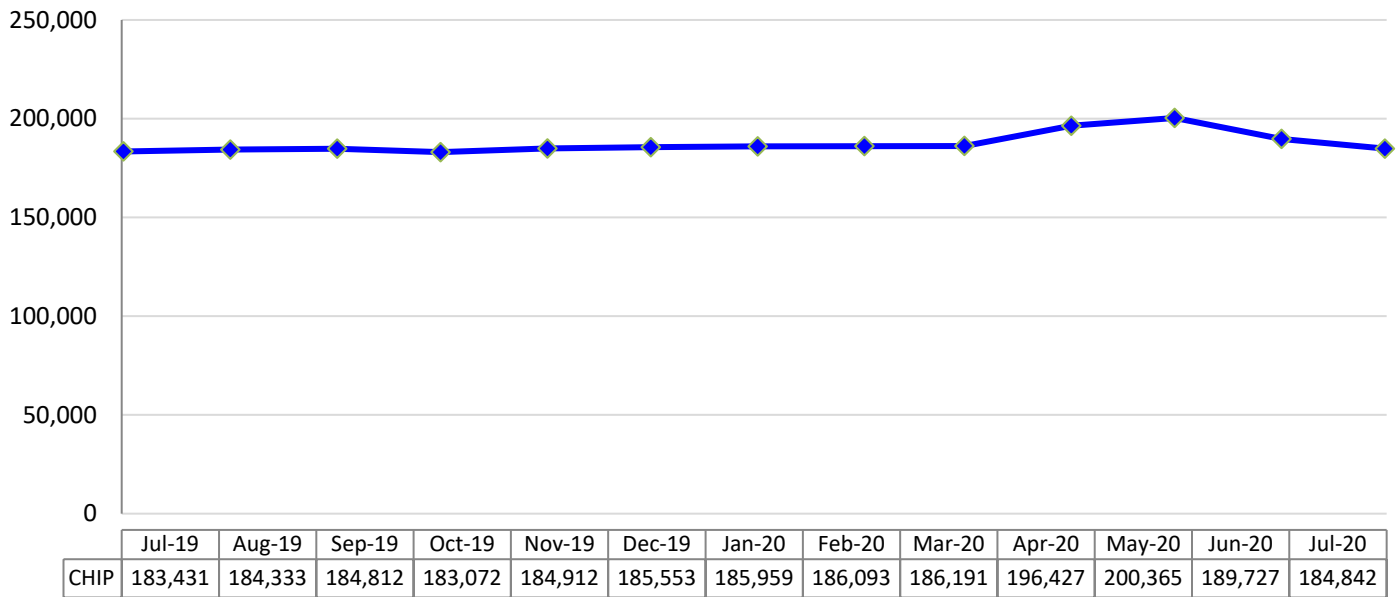
MA Children Preliminary Estimates ("children" can include persons up to 21 years old)



Data Source: DHS Data Enterprise Warehouse

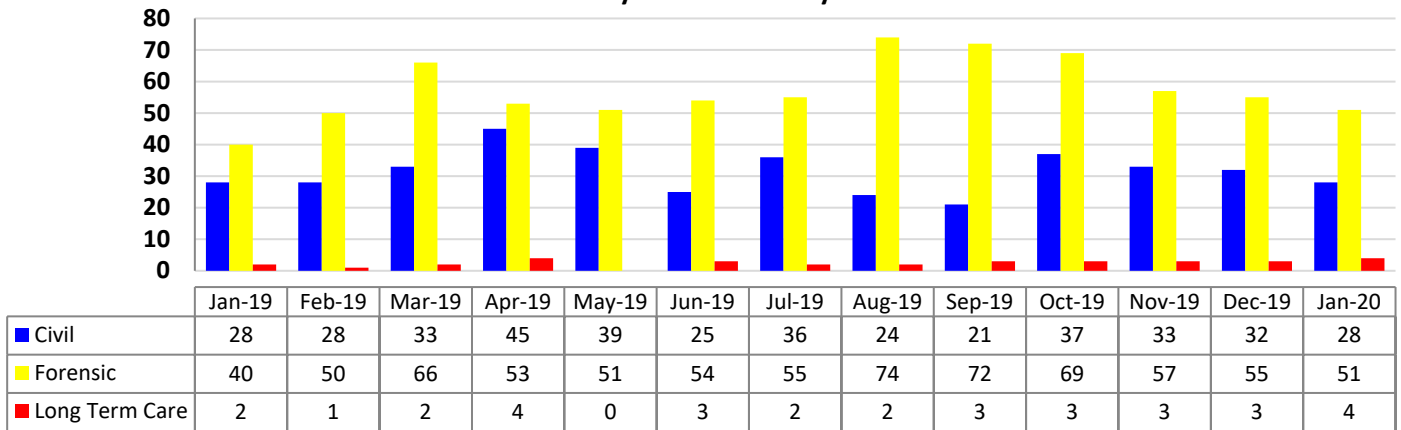
Note: Children are those recipients under the age of 21. (EC (eligible child) is no longer used for determining MA children).

Children's Health Insurance Program (CHIP) Enrollment 1% Increase in CHIP Enrollment From July 2019 to July 2020



Data Source: DHS Data Enterprise Warehouse

State Hospital Admissions
19% Increase in State Hospital Admissions from
January 2019 to January 2020



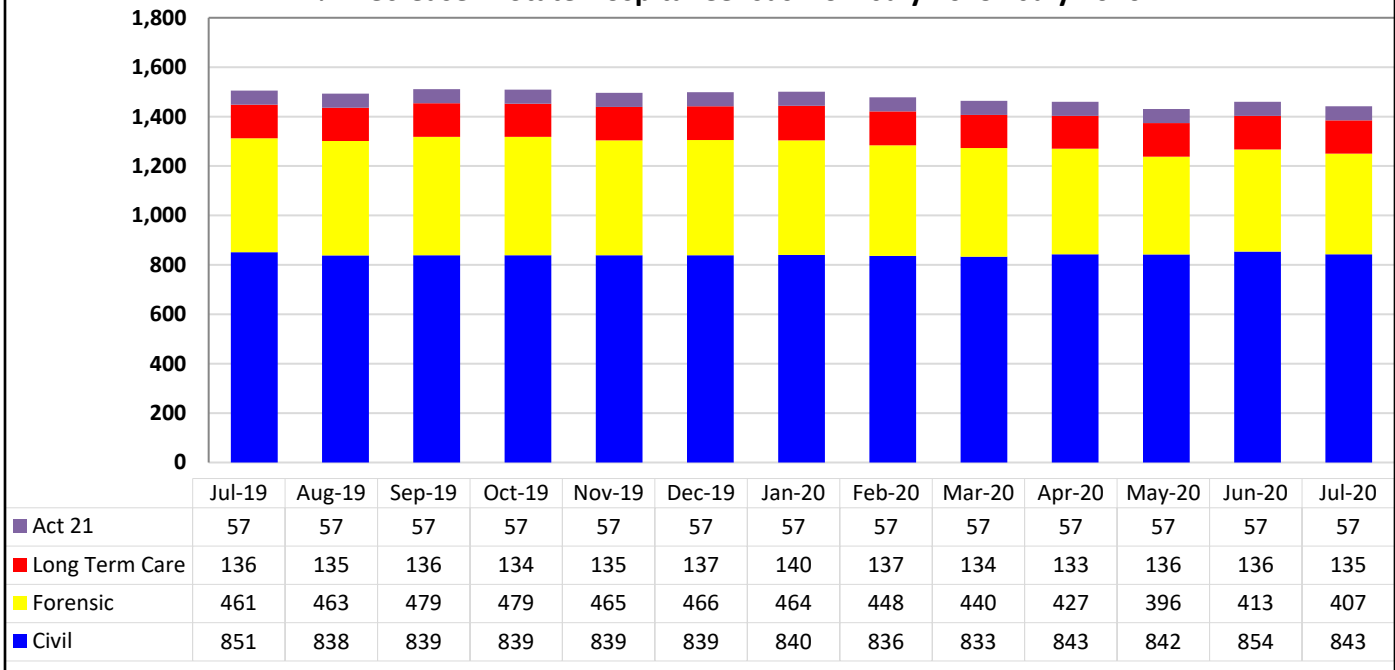
Data Source: Patient Census Information System

Civil: Unduplicated count of civil admissions of patients during the reporting month to: Clarks Summit State Hospital, Danville State Hospital, Norristown State Hospital, Torrance State Hospital, Warren State Hospital and Wernersville State Hospital.

Forensic: Unduplicated count of forensic admissions of patients during the reporting month to: Norristown State Hospital and Torrance State Hospital forensic units.

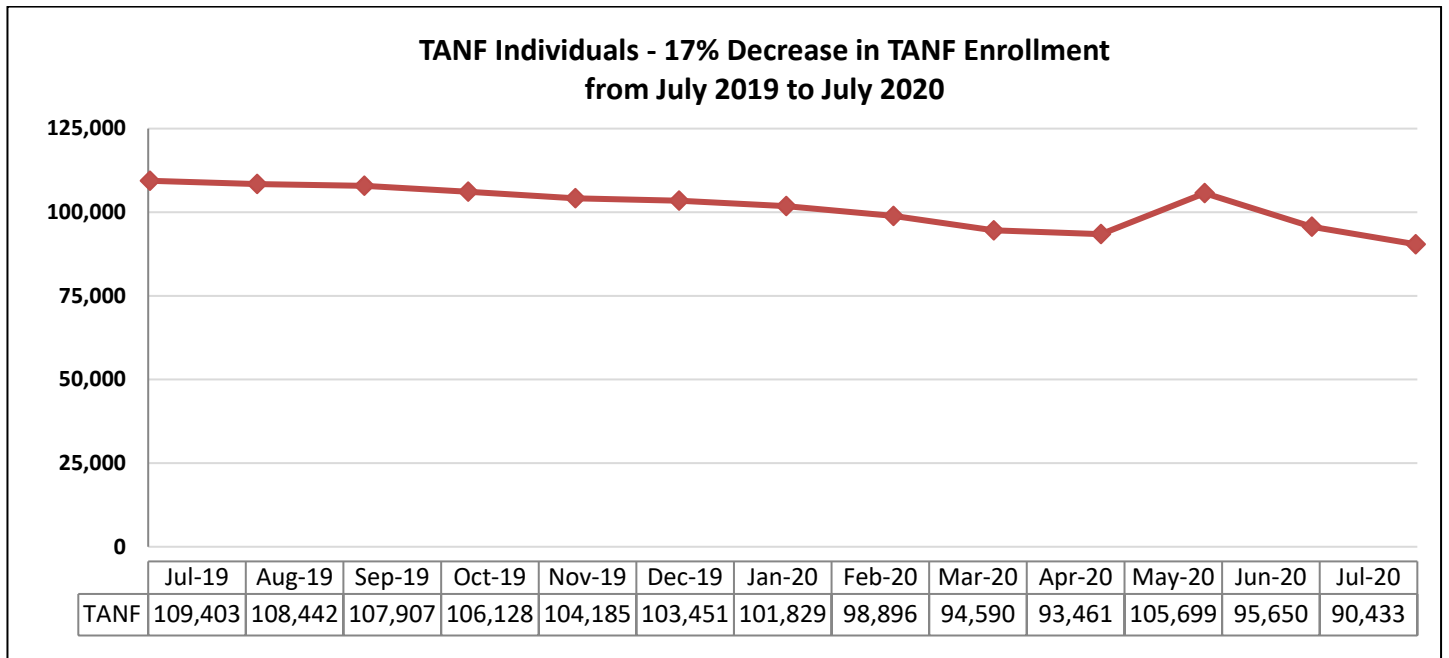
Long Term Care: Unduplicated count of admissions of patients during the reporting period to: South Mountain Restoration Center.

State Hospitals Census
4% Decrease in State Hospital Census from July 2019 - July 2020



Data Source: Patient Census Information System

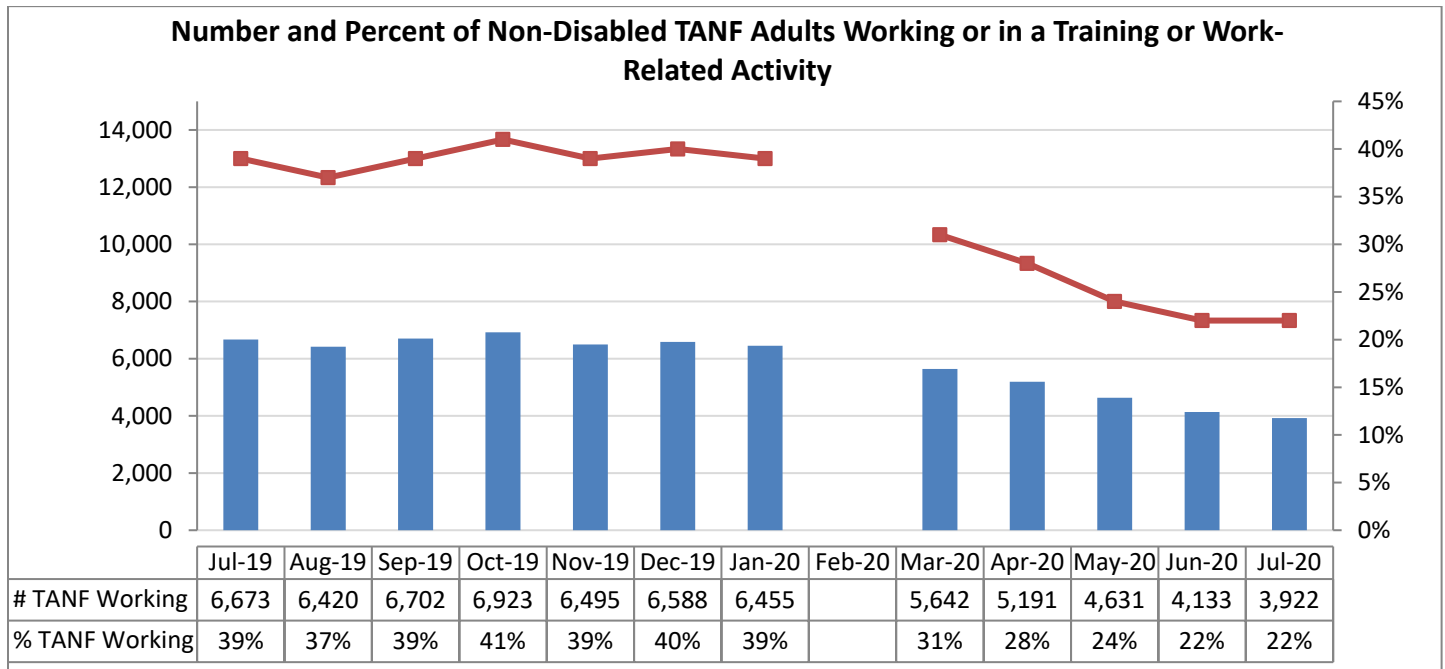
BENEFIT ASSISTANCE PROGRAMS FOR CHILDREN AND FAMILIES



Data Source: DHS ListServ/EDW

NOTE: TANF numbers now reflect data pulled on the second Tuesday of the month after the reported month.

*Increase in May 2020 of 10,493 persons are from the EAP. (Emergency Assistance Program). June 2020 includes 2,644 persons from EAP.

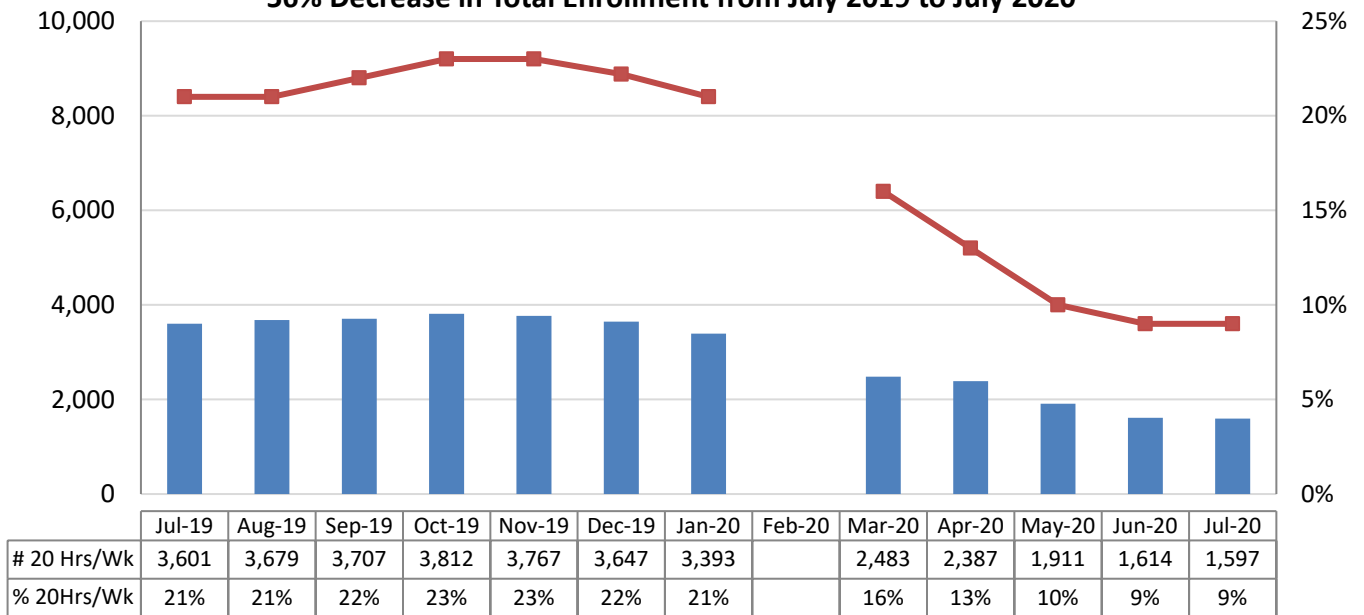


Data Source: AIS32W Report

*Data has been updated to count only those with open cases

*February 2020 data missing due to system update.

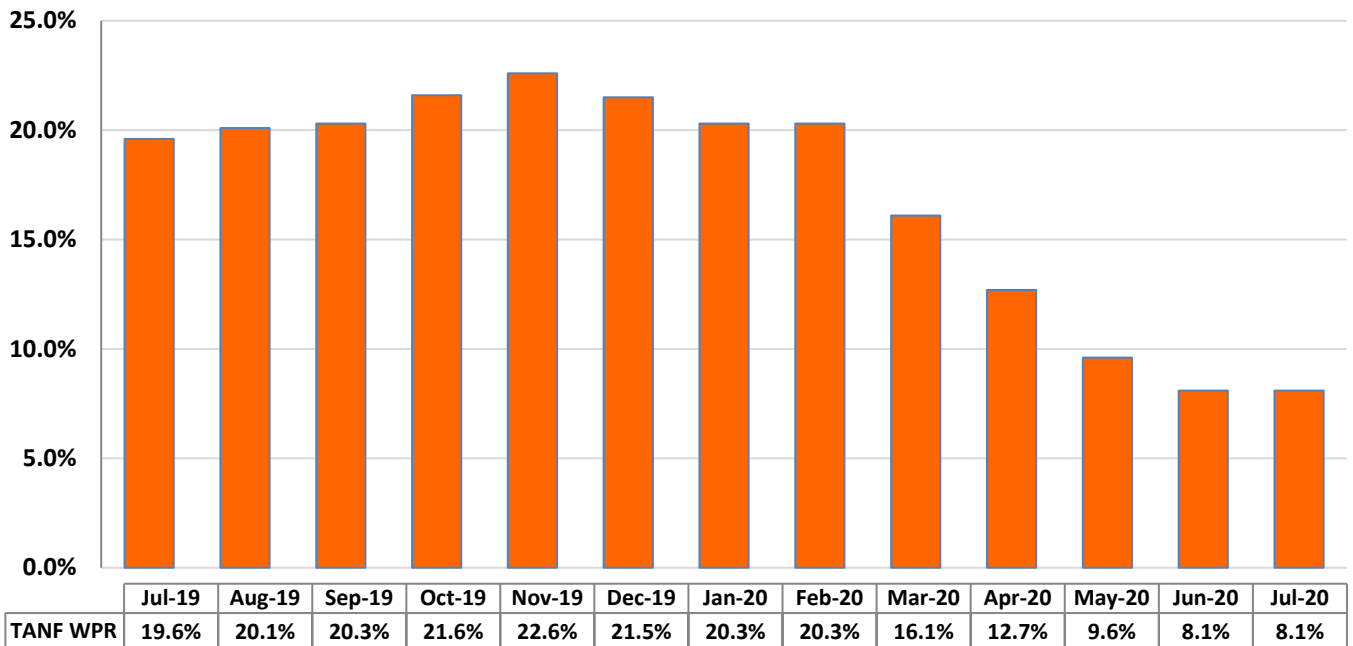
**Number of Non-disabled TANF Adults Working or in a Training Activity or Work-related Activity 20 Hours or More per Week -
56% Decrease in Total Enrollment from July 2019 to July 2020**



*February 2020 data missing due to system update. Will be updated at a later date

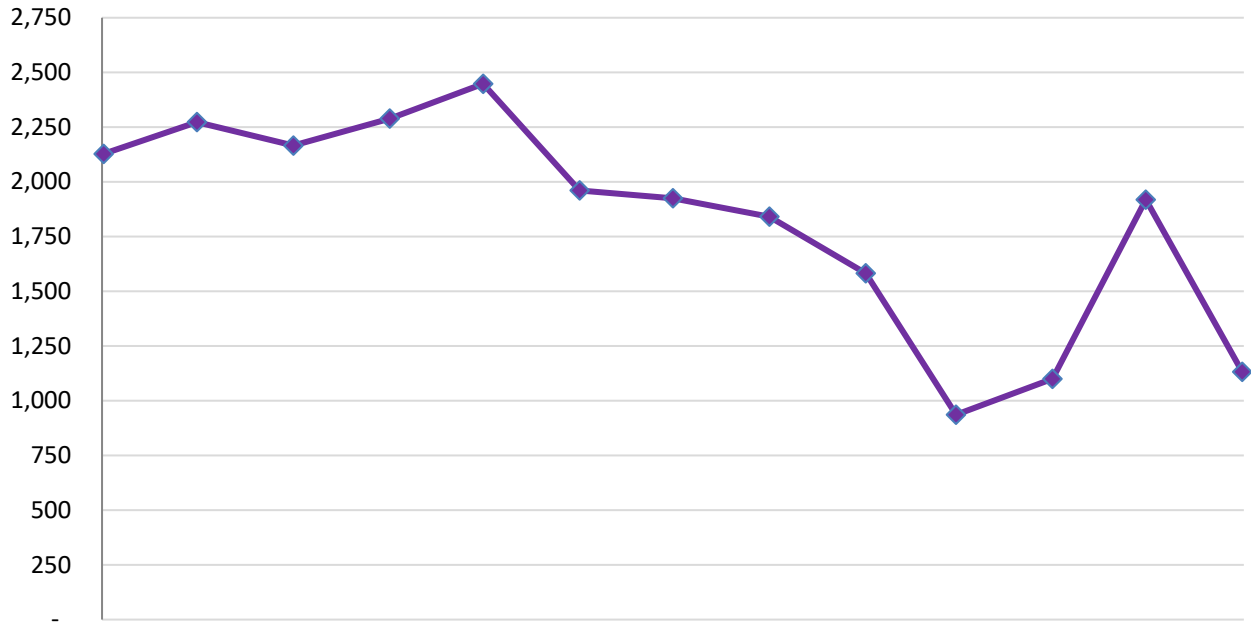
Data Source: AIS32W Report

Pennsylvania Estimated TANF Workforce Participation Rate



Data Source: TNF22 Report

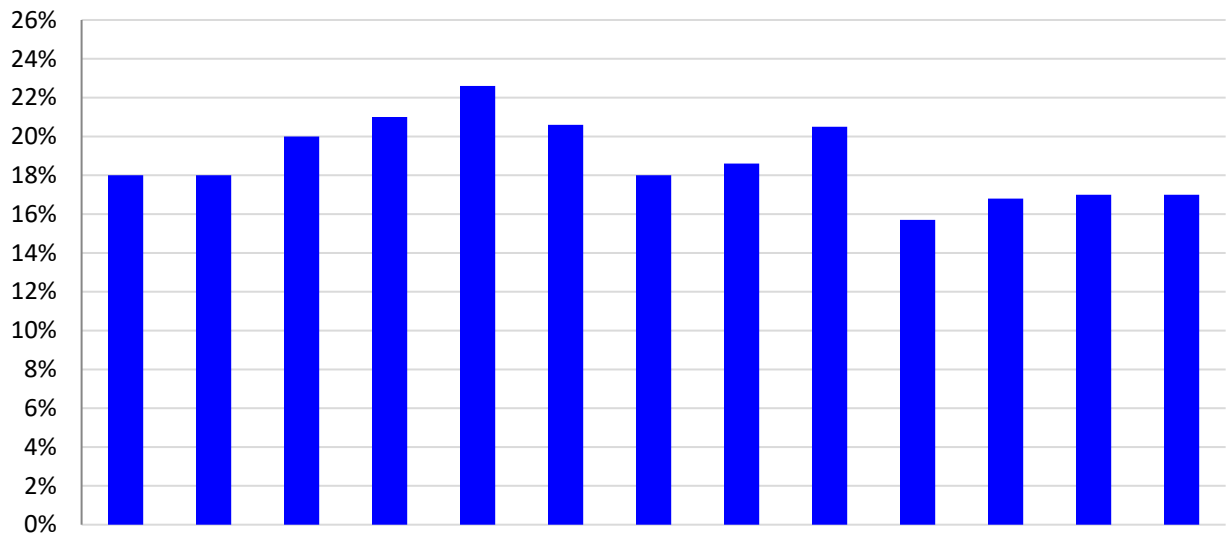
TANF Individuals that Obtain Employment
47% Decrease from June 2019 to June 2020



DHS Data Enterprise Warehouse

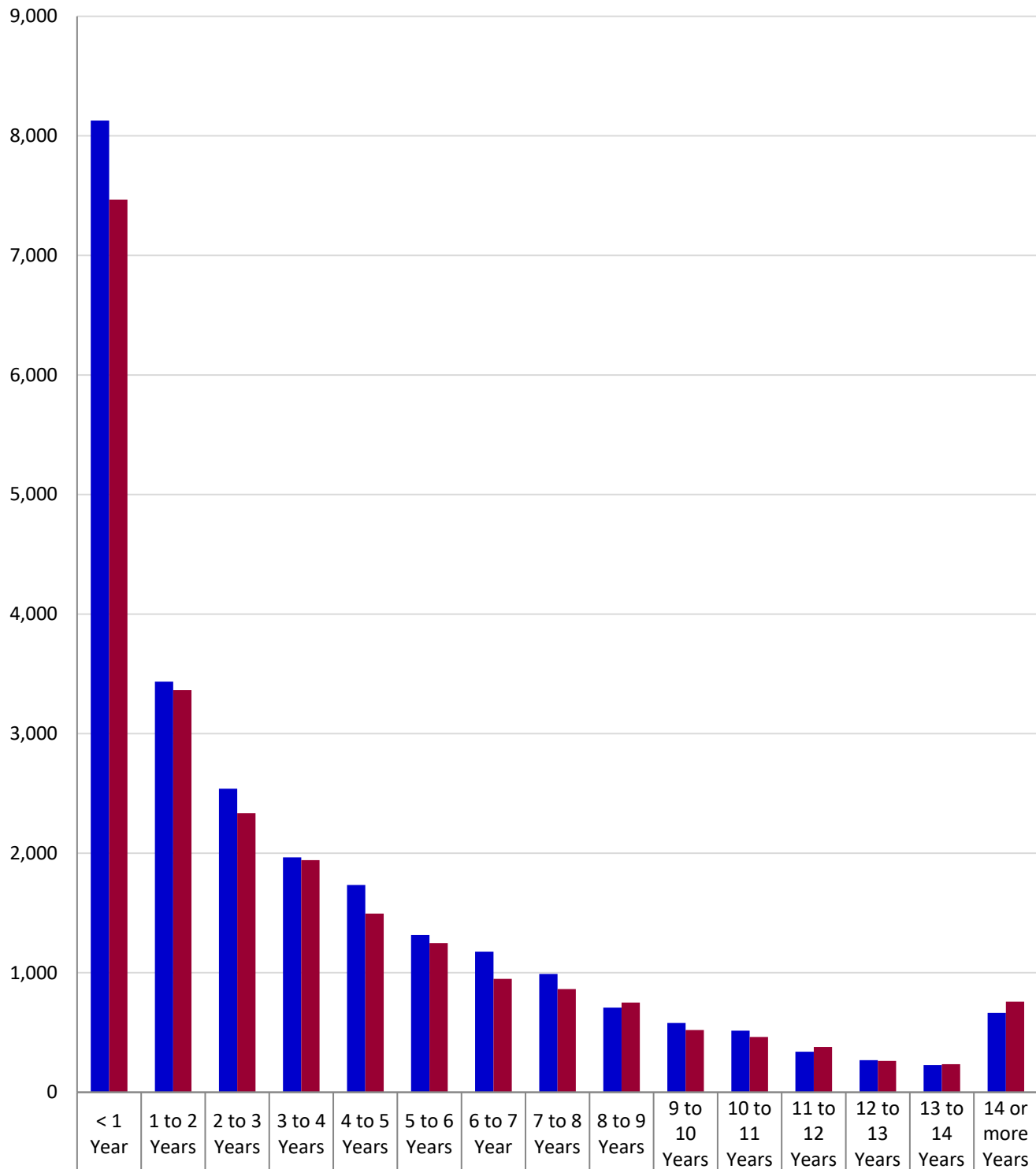
A budget is one or more related or unrelated individuals who occupy a common residence or would occupy a common residence if they were not homeless, and whose needs are considered together in determining eligibility for assistance are considered together in determining eligibility for assistance under one category of assistance.

TANF Budgets Leaving for Employment as Percent of All Budgets that Left TANF



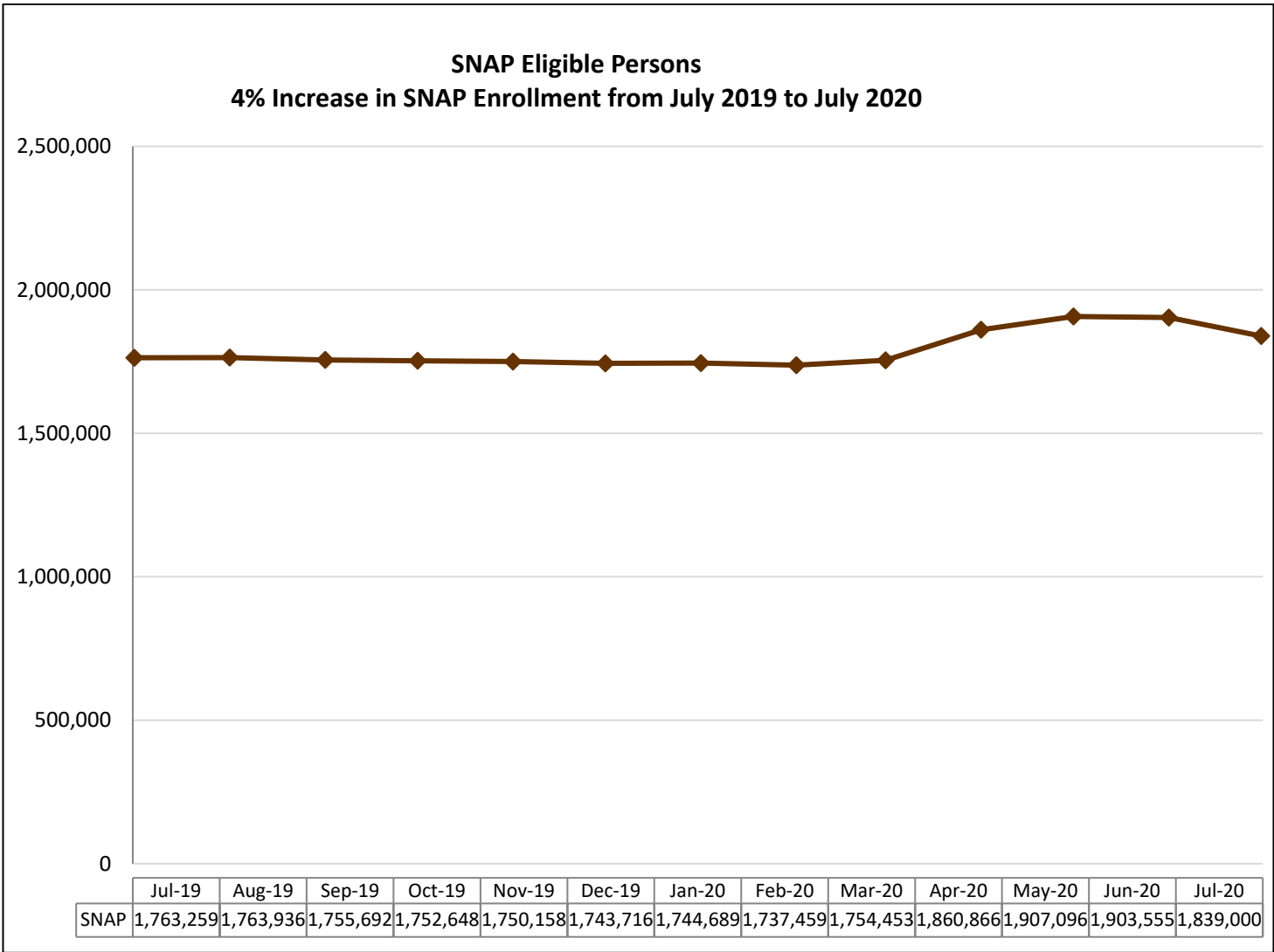
DHS Data Enterprise Warehouse

Adults on TANF by Length of Time



Data Source: AIS32W File

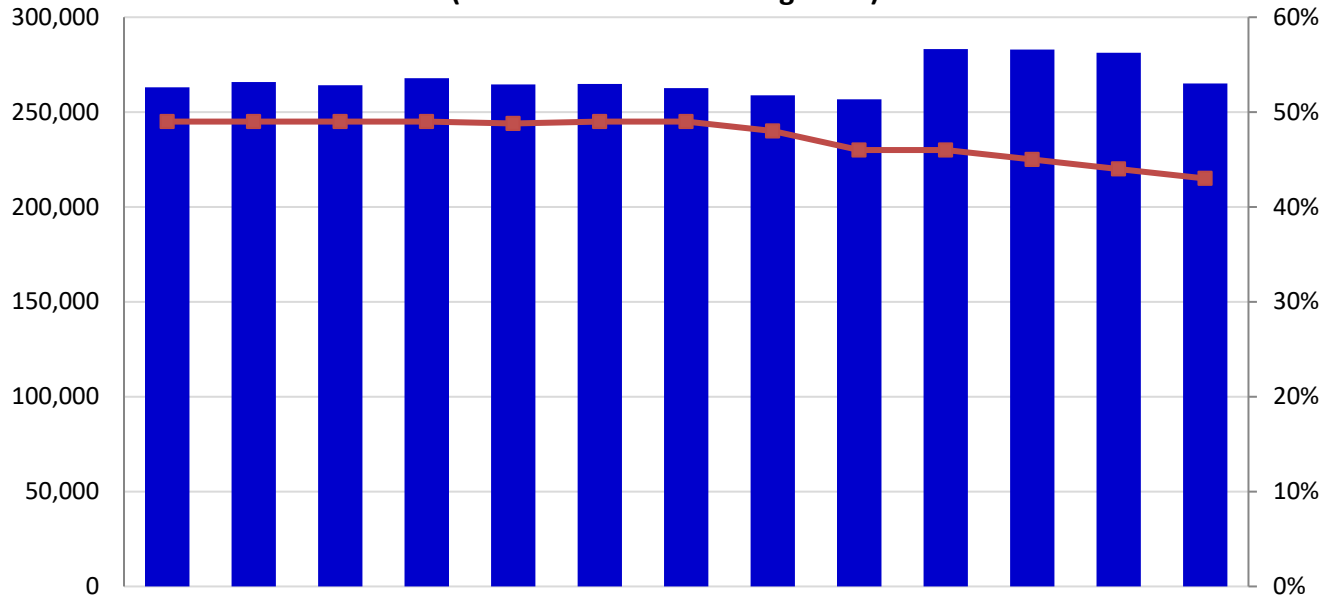
Note: Total time on TANF is cumulative, not subsequent (i.e., as a person moves on and off TANF, each time they are on will add to their total), and also includes time spent on TANF as a child.



Data Source: DHS ListServ/EDW

NOTE: SNAP numbers now reflect data pulled on the second Tuesday of the month after the reported month.

Number and Percent of Non-disabled SNAP Adults Working (Excludes Those Receiving TANF)*

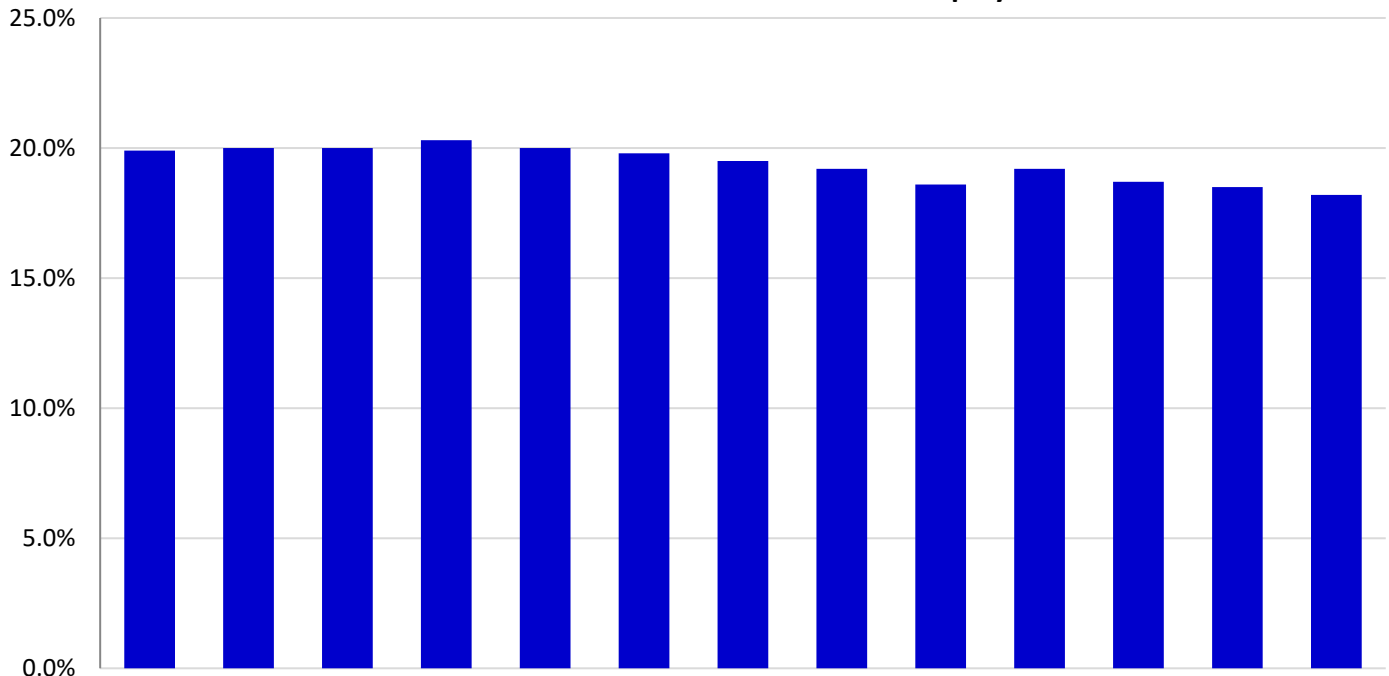


	Jul-19	Aug-19	Sep-19	Oct-19	Nov-19	Dec-19	Jan-20	Feb-20	Mar-20	Apr-20	May-20	Jun-20	Jul-20
# SNAP Working	263,090	265,811	264,131	267,871	264,584	264,789	262,650	258,808	256,741	283,241	282,966	281,288	265,113
% SNAP Working	49%	49%	49%	49%	49%	49%	49%	48%	46%	46%	45%	44%	43%

*Beginning in Jan 2018, SNAP Adults working includes non-elderly only.

Data Source: DHS Enterprise Data Warehouse

Percent of Non-disabled SNAP Adults with Full-time Employment*

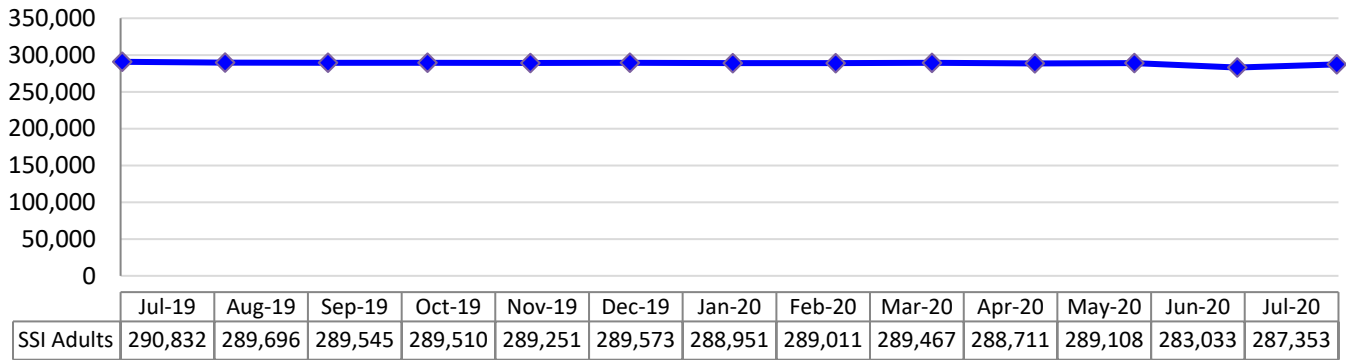


	Jul-19	Aug-19	Sep-19	Oct-19	Nov-19	Dec-19	Jan-20	Feb-20	Mar-20	Apr-20	May-20	Jun-20	Jul-20
% SNAP Working	19.9%	20.0%	20.0%	20.3%	20.0%	19.8%	19.5%	19.2%	18.6%	19.2%	18.7%	18.5%	18.2%

*Full-time status according to CIS Employment Status Code

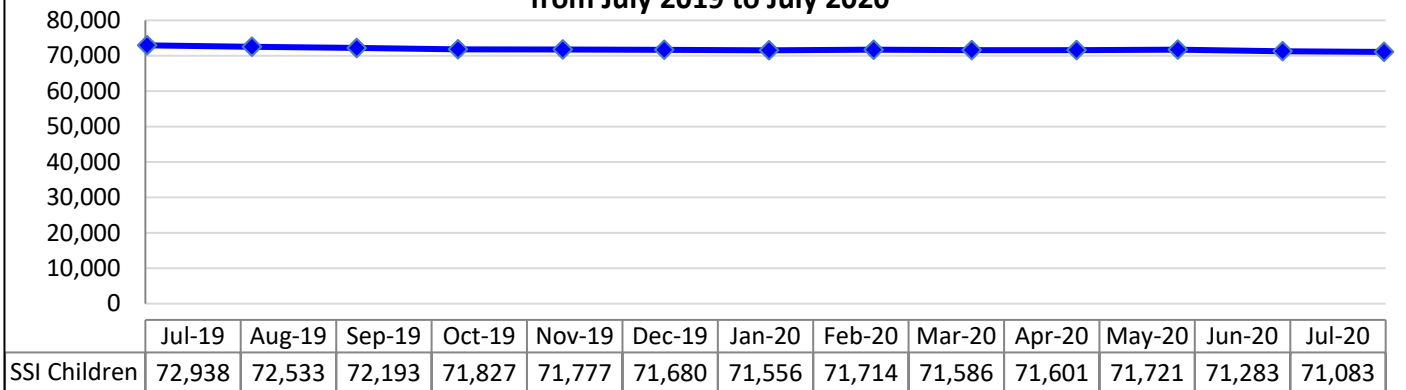
Data Source: DHS Enterprise Data Warehouse

**SSI Adults -- 1.2% Decrease in Total Adult SSI Enrollment
from July 2019 to July 2020**



Data Source: DHS Enterprise Data Warehouse

**SSI Children -- 2.5% Decrease in Total Child SSI Enrollment
from July 2019 to July 2020**



Data Source: DHS Enterprise Data Warehouse

Child Support Measures

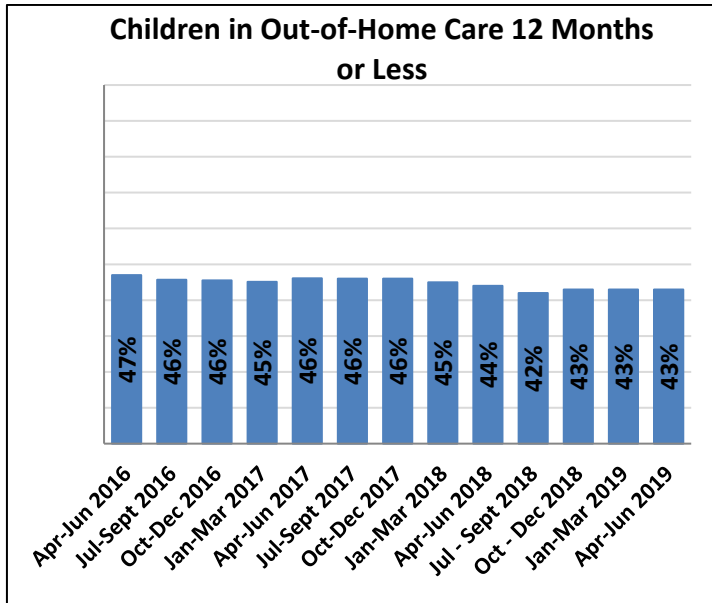
Child Support	Federal Target	Pennsylvania Rate												
		July 2019	Aug 2019	Sept 2019	Oct 2019*	Nov 2019	Dec 2019	Jan 2020	Feb 2020	Mar 2020	Apr 2020	May 2020	July 2020	July 2019
Child Support - Cases with Paternity Establishments**	80%	105%	107%	108%	94%*	95%	96%	98%	98%	100%	100%	101%	101%	105%
Child Support - Current Supports Collected	80%	84%	84%	84%	85%*	85%	85%	84%	84%	84%	83%	83%	83%	84%
Child Support - Percent of Cases Paying Arrears	80%	83%	84%	85%	48%*	62%	67%	72%	74%	78%	79%	83%	85%	83%
Cases with Orders	80%	90%	90%	90%	90%*	90%	90%	90%	90%	90%	91%	90%	90%	90%
Cost Effectiveness (FFY)	\$5.00	FFY 2015-16: \$5.10			FFY 2016-17: \$5.43		FFY 2017-18: \$5.02		FFY 2018-19: \$4.78		FFY 2019-20: \$4.49			

*Drop from September to October due to starting of new Federal Fiscal Year (compare with previous year) Data Source: OCSE Reports

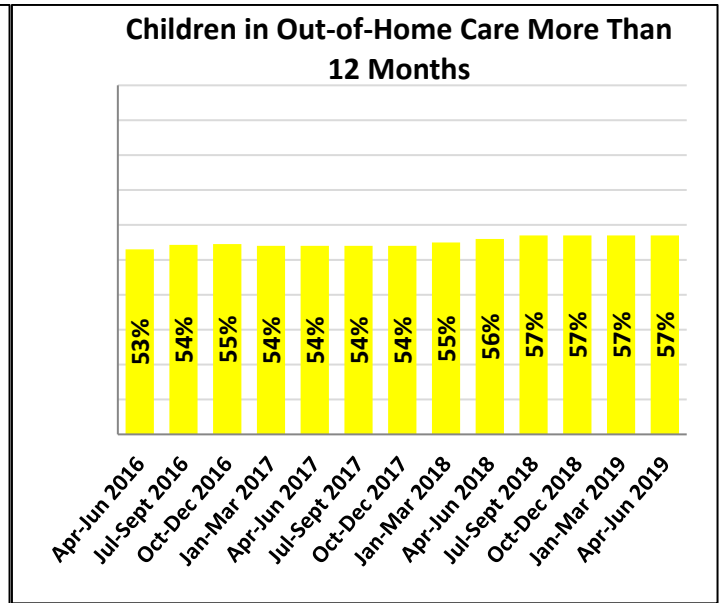
CHILD WELFARE SERVICES

Category: YDC/YFC's	Current	Average
Monthly Admissions	29 (July 2020)	Rolling Year Average 35 (Aug 2019 – Jul 2020)
Level of Improvement in Life Skills from Intake to Discharge for all YDC/YFC participants completing program	10% (July 2020)	Rolling Year Average 7% (August 2019 – Jul 2020)

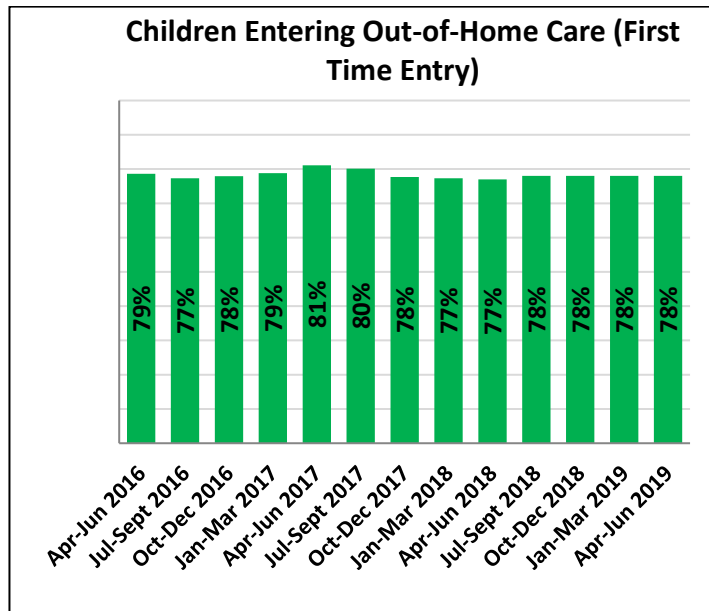
Data Source: Automatic Intake and Incident Reporting System (admissions); Ansell-Casey Life Skills Assessment (life skills)



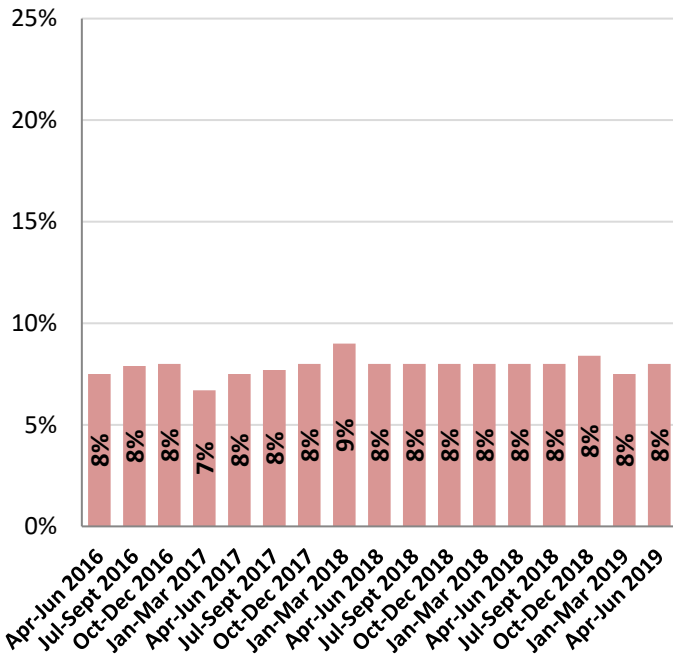
Data Source: AFCARS



Data Source: AFCARS

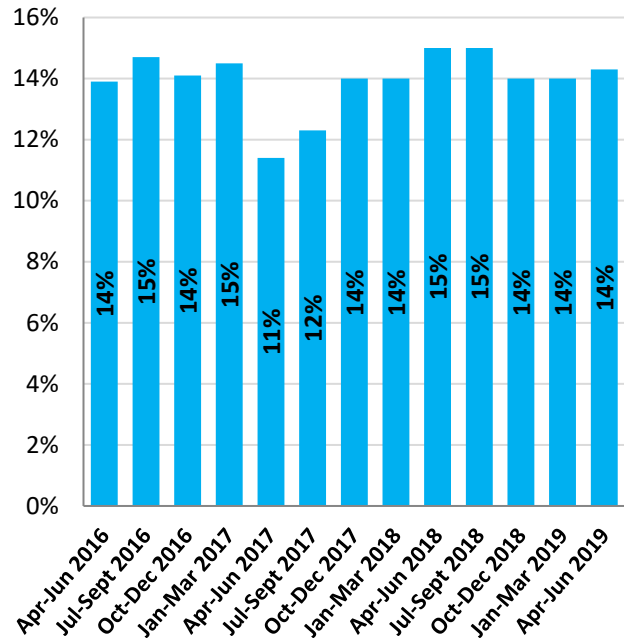


**Children Re-entering Out-of-Home Care:
>12 Months Since Discharge**



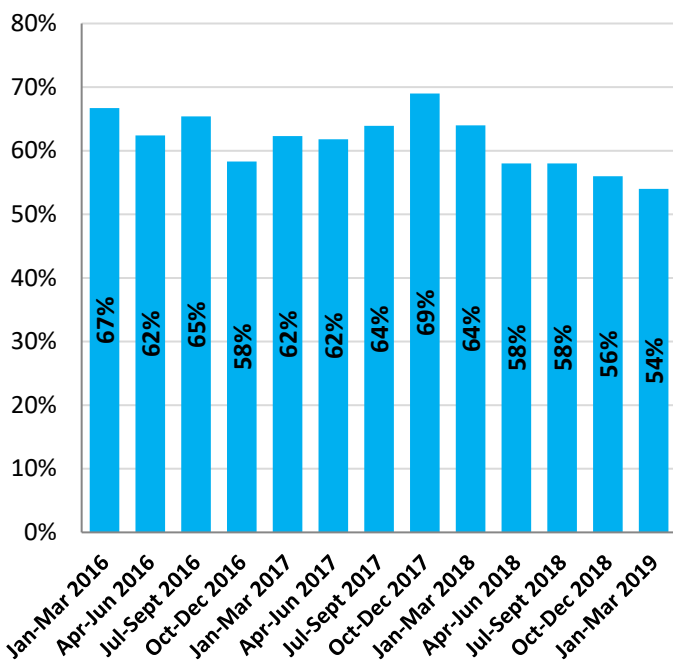
Data Source: AFCARS

**Children Re-entering Out-of-Home Care:
<12 Months Since Discharge**



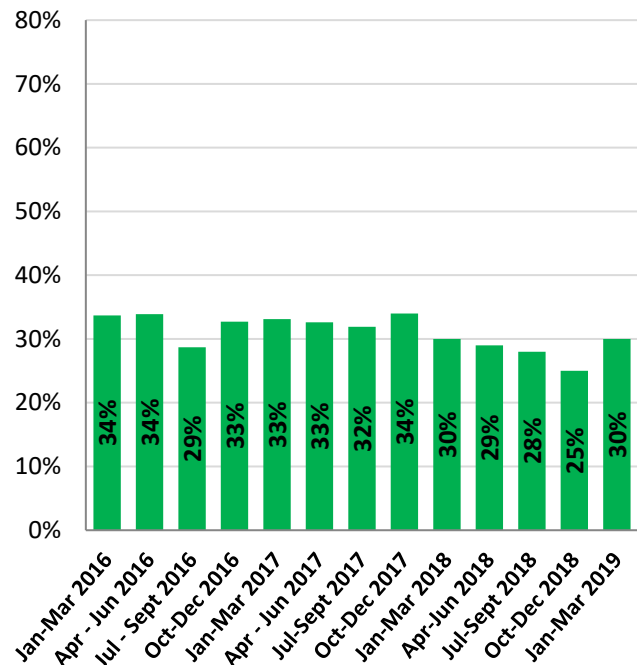
Data Source: AFCARS

Discharges to Guardianship in 24 Months or Less



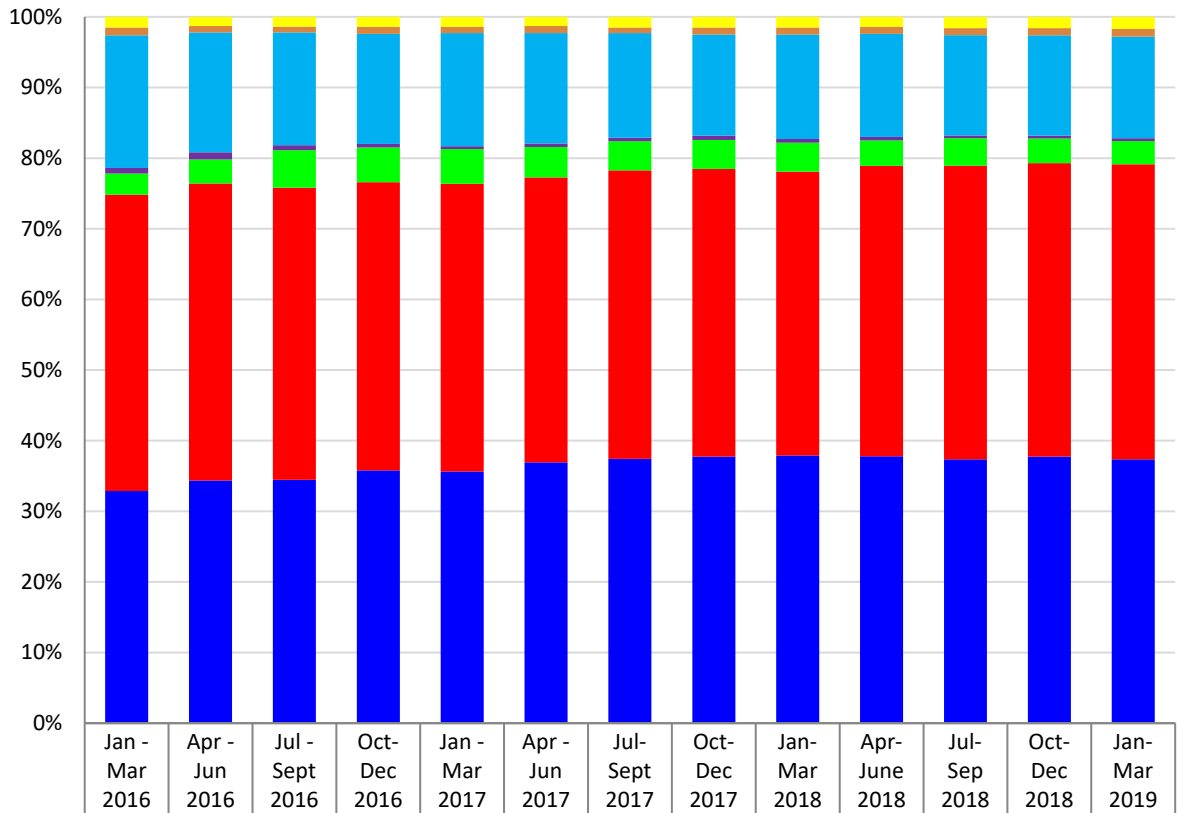
Data Source: AFCARS

Adoption: 24 Months or Less



Data Source: AFCARS

Child Welfare: Settings of Children in Care



"Supervised Independent Living" = those in an alternative transitional living arrangement where the child is under the supervision of the agency but without 24 hour adult supervision, is receiving financial support from the child welfare agency, and is in a setting which provides the opportunity for increased responsibility for self care.

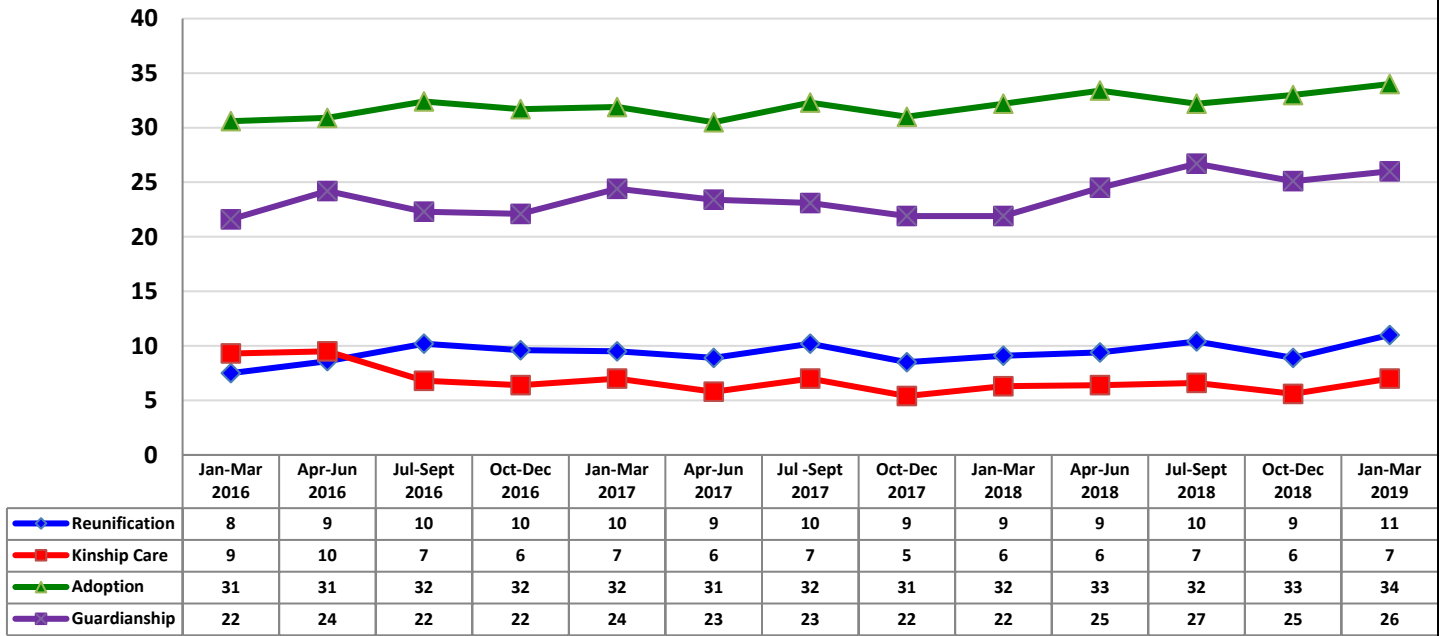
"Runaway" = those who have run away from the foster care setting.

"Residential Setting" = those placed in a group home or institution

"Home Setting" = those placed in pre-adoptive homes, Family Foster Home-relative, Family Foster Home-non-relative and trial home visits.

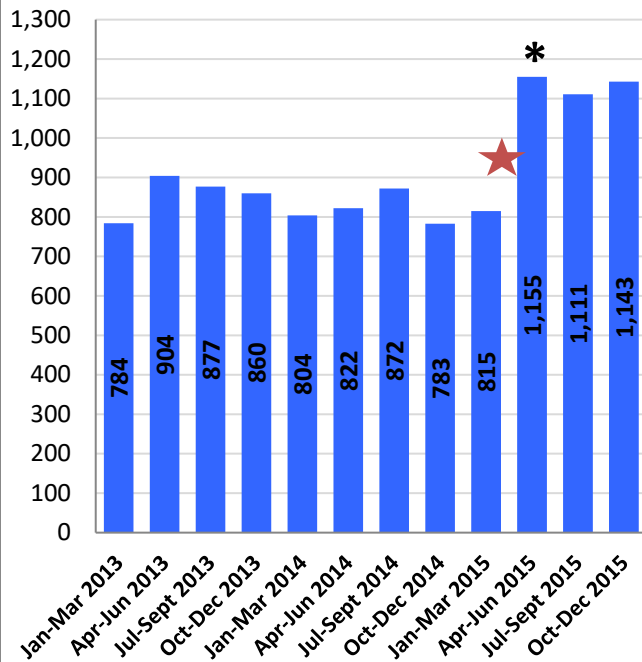
Data Source: AFCARS

**Average Number of Months from Latest Removal from Home
to Permanency Category**



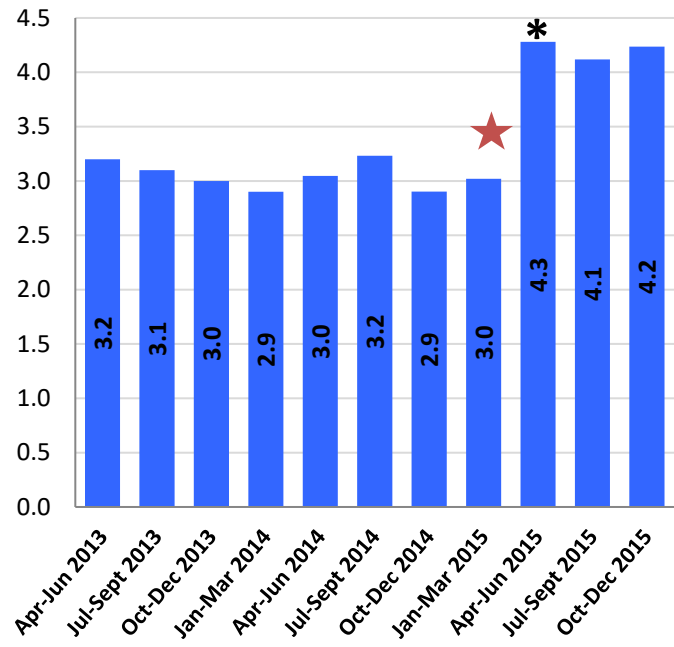
Data Source: AFCARS

**Substantiated Reports of Child Abuse/
Neglect in PA**



Data Source: Childline

**Rate per 10,000 Children of Substantiated
Reports of Child Abuse/Neglect in PA**



Data Source: Childline

* Increase due to new statutes requiring County Child Welfare agencies to complete an investigation and submit outcomes within 60 days.

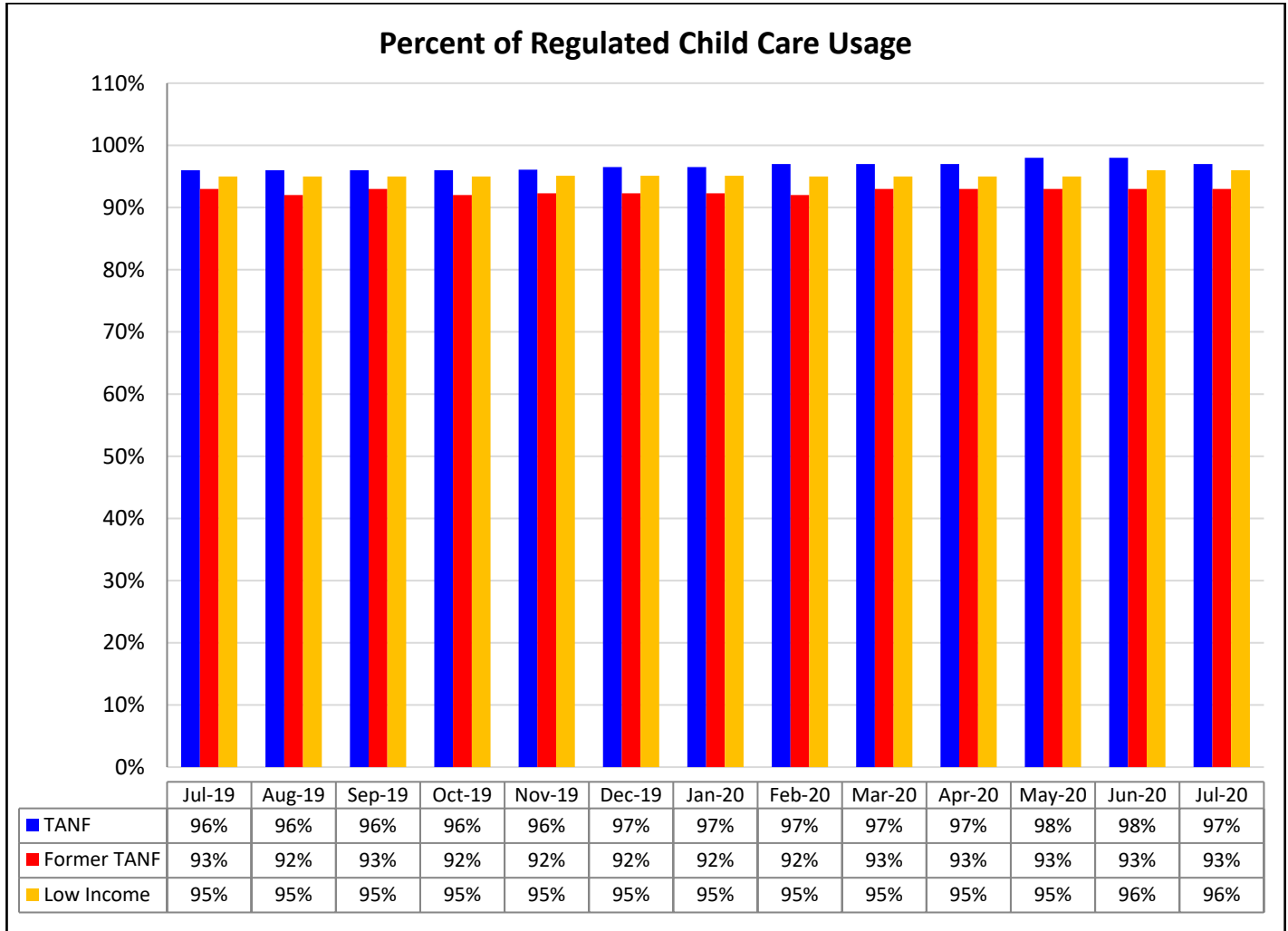
★ Data for January-March quarter is incomplete due to data conversion to new system

CHILD CARE AND EARLY LEARNING SERVICES

Child Care Subsidies	Number of Children Receiving* (July 2020)	Encumbrance (July 2020)	# on Waiting List (July 2020)
TANF	5,097	90%	0
Former TANF	32,949	104%	0
Low Income	71,883	99%	1,221

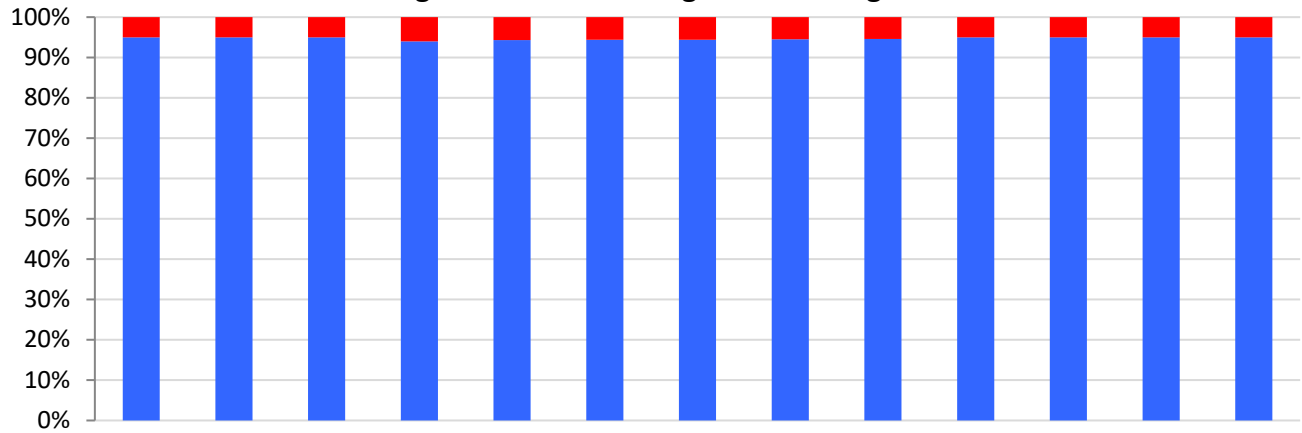
Data Sources: PELICAN CCW and PELICAN Child Care DW

*Preliminary Number – final number will be determined as additional data becomes available.



Data Source: PELICAN CCW

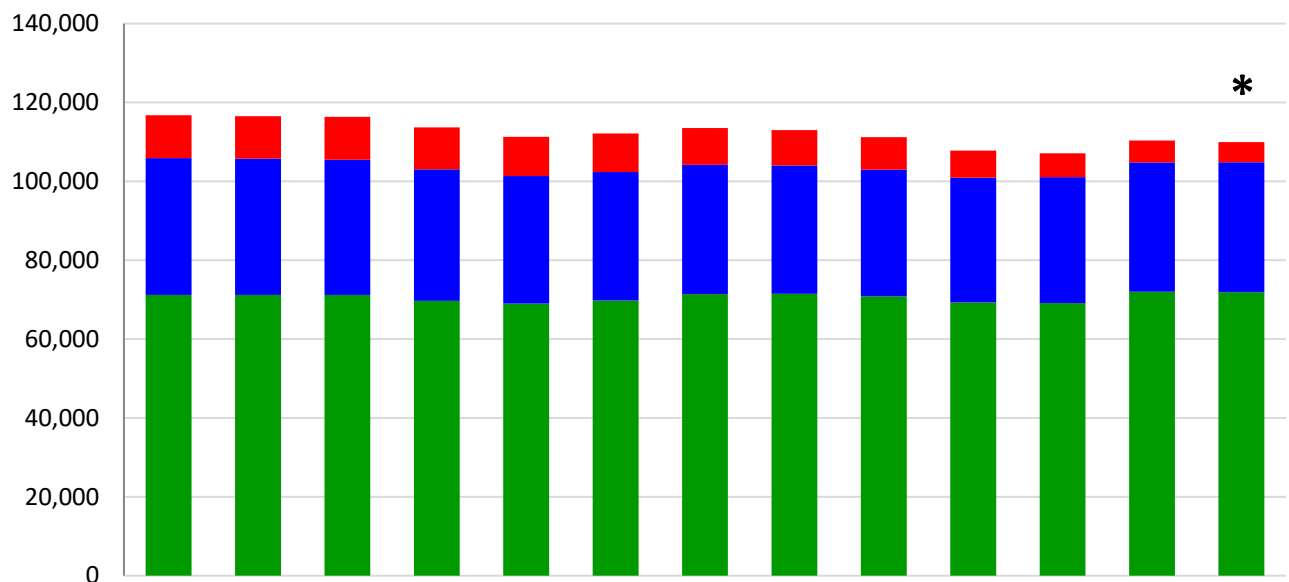
Percent of Children Receiving Subsidized Child Care in Regulated Versus Unregulated Settings



	Jul-19	Aug-19	Sep-19	Oct-19	Nov-19	Dec-19	Jan-20	Feb-20	Mar-20	Apr-20	May-20	Jun-20	Jul-20
Unregulated	5%	5%	5%	6%	6%	6%	6%	6%	5%	5%	5%	5%	5%
Regulated	95%	95%	95%	94%	94%	94%	94%	95%	95%	95%	95%	95%	95%

Data Source: PELICAN CCW

Children Receiving Subsidized Child Care



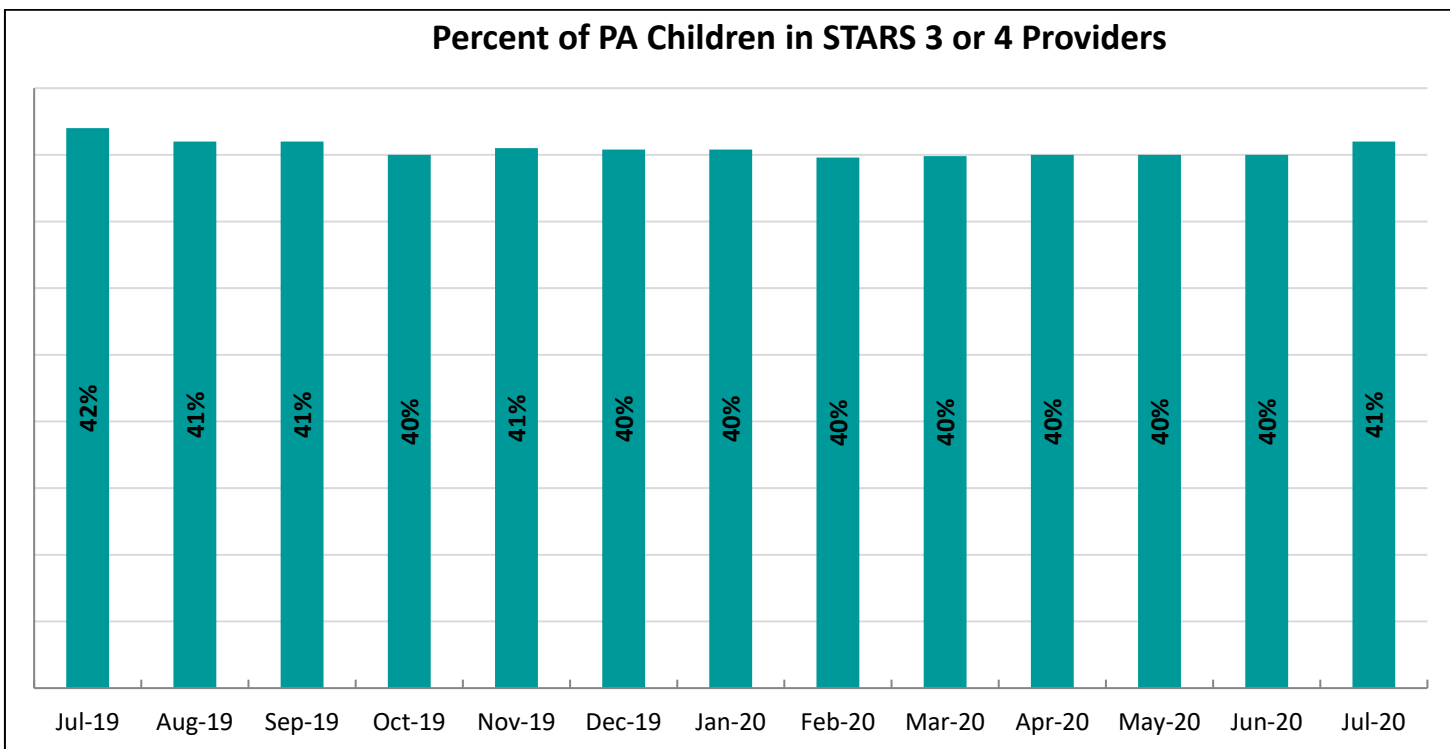
	Jul-19	Aug-19	Sep-19	Oct-19	Nov-19	Dec-19	Jan-20	Feb-20	Mar-20	Apr-20	May-20	Jun-20	Jul-20
TANF	10,871	10,740	10,857	10,619	9,944	9,781	9,343	8,993	8,256	6,875	6,048	5,553	5,097
Former TANF	34,680	34,560	34,310	33,381	32,322	32,566	32,768	32,505	32,114	31,655	31,931	32,788	32,949
Low Income	71,198	71,206	71,188	69,681	69,005	69,786	71,400	71,500	70,851	69,278	69,130	72,023	71,883

*Preliminary Numbers – final numbers will be determined as additional data becomes available Data Source: PELICAN CCW

NOTE: Beginning July 2012, number of children being served has decreased due to correction of a contractor error where children on the waiting list were being counted as receiving services.

Keystone STARS	Current	Historical
% of Keystone STARS Providers at STAR 3 or STAR 4	26% (July 2020)	26% (June 2020)

Data Source: PELICAN KTQ



Data Source: PELICAN CCW

Infants, Toddlers, and Families Waiver and Early Intervention (0-3)	Current	Historical
Early Intervention Enrollment (1-day Count)	23,083 (July 2020)	22,759 (June 2020)
Early Intervention Enrollment (Unduplicated Total)	23,083 (July 2020)	25,175 (June 2020)
Waiver (Monthly Average)	4,073 (July 2020)	2,789 (June 2020)
Children Who Met EI Goals Prior to 3 rd Birthday	283 (23%) (July 2020)	257 (14%) (June 2020)

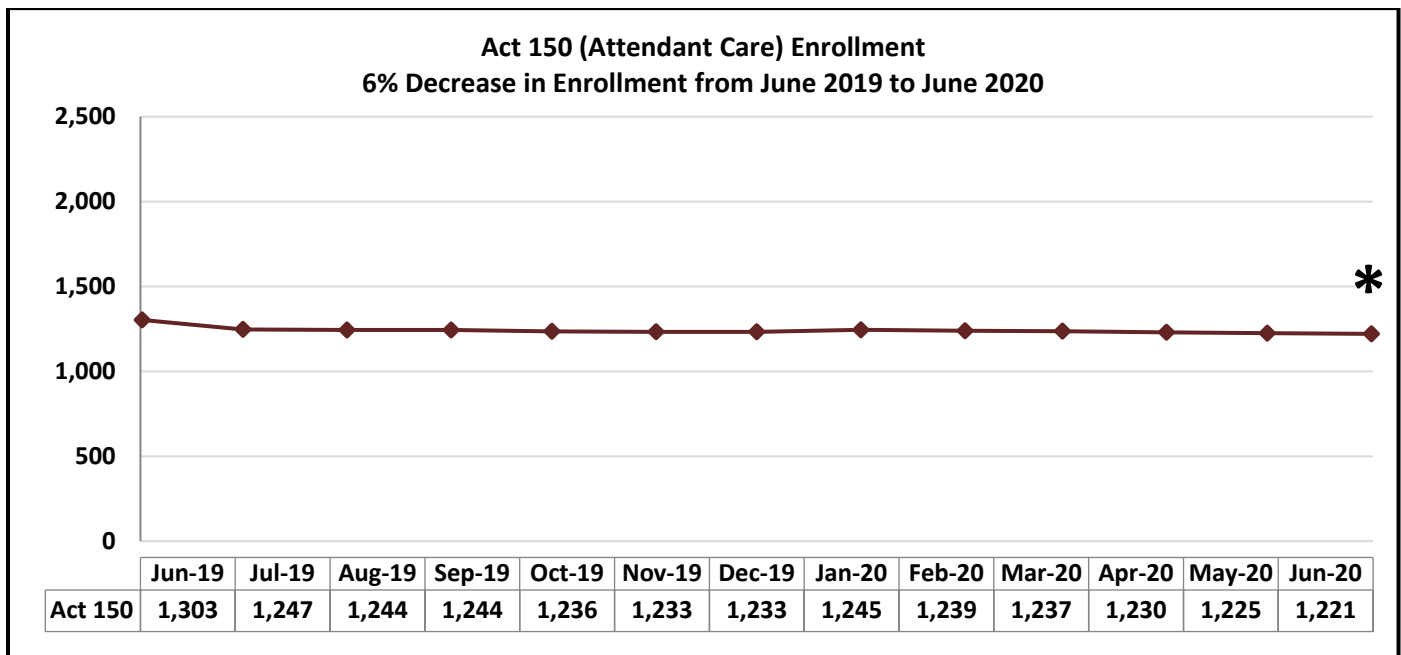
Data Sources: HCSIS DW, EI Ad Hoc Reporting Tool

Early Intervention Enrollment – The total number of children currently receiving services and supports through the EI program. The count of children (birth to three) who have a 25% delay in one or more of the following areas: cognitive development; physical development including vision and hearing; communication development; social or emotional development; or adaptive development.

ITF Waiver Enrollment – The total number of children currently receiving services and supports through the Infants, Toddlers, and Families Waiver. The count of children (birth to three) who are eligible for Medical Assistance, have a 50% delay in one area or 33% delay in two areas, and receive services in the home or a community setting.

Early Intervention Children Who Met EI Goals Prior to 3rd Birthday – Of children receiving early intervention services between the ages of zero and three, the number who meet their developmental goals by their 3rd birthday.

LONG TERM SUPPORTS FOR PERSONS WITH DISABILITIES AND OLDER PENNSYLVANIANS

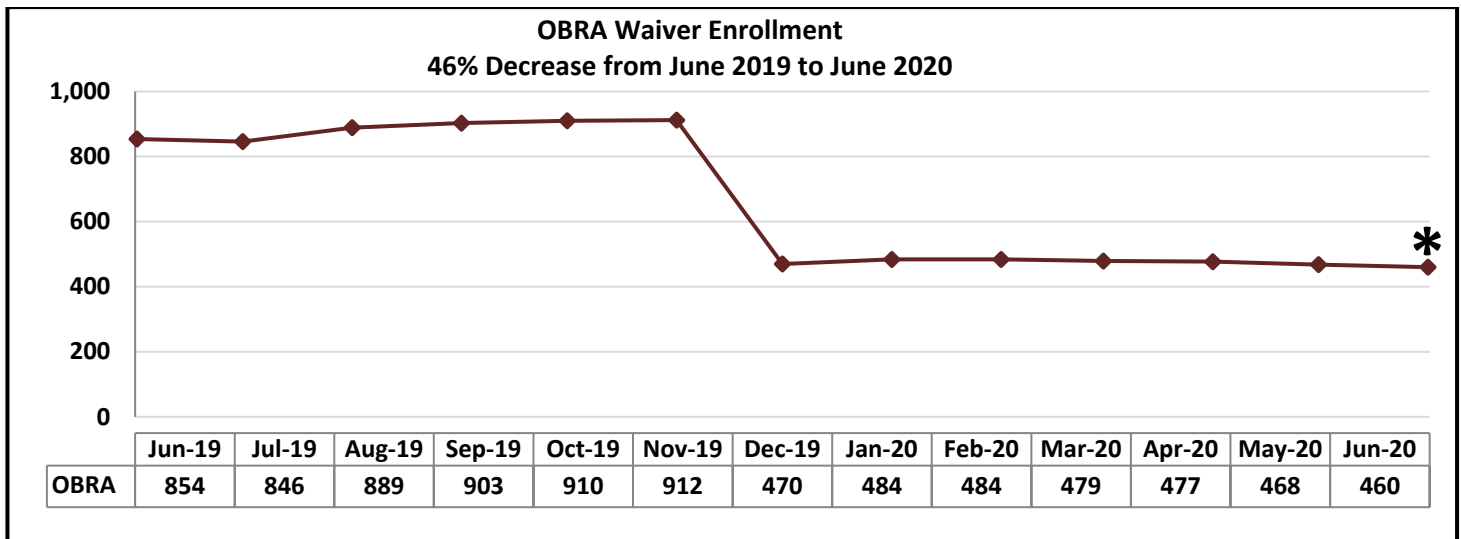


Source: DHS Enterprise Data Warehouse

***Preliminary Number – will be updated as additional data becomes available**

Data is for statewide Fee for Service enrollment only.

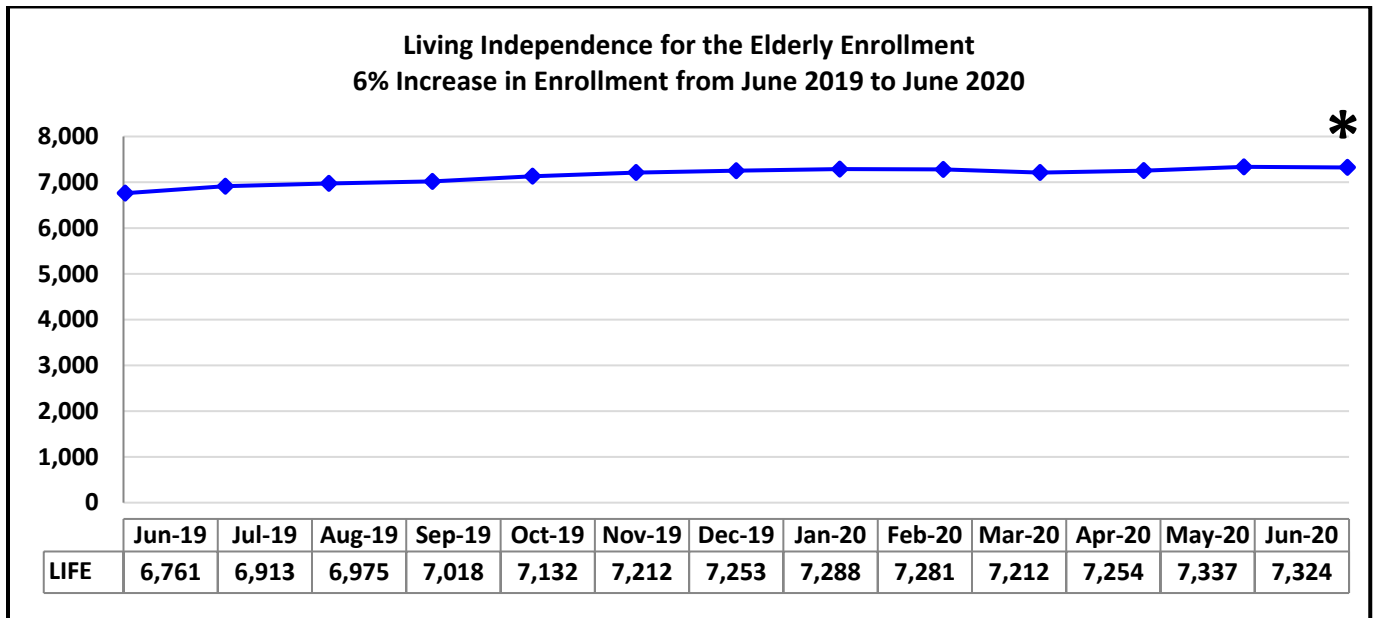
Point-in-time (last day of month) count of unduplicated participants with an Approved Service Plan in DHS's case management system. The Act 150 provides service coordination, personal assistance and personal emergency response system to individuals with physical disabilities, age 18 through 59, who are mentally alert. This waiver also provides community transition services. This is a state funded program. Participants must be NFCE but are not financially eligible for Medicaid.



Source: DHS Enterprise Data Warehouse

***Preliminary Number – will be updated as additional data becomes available**

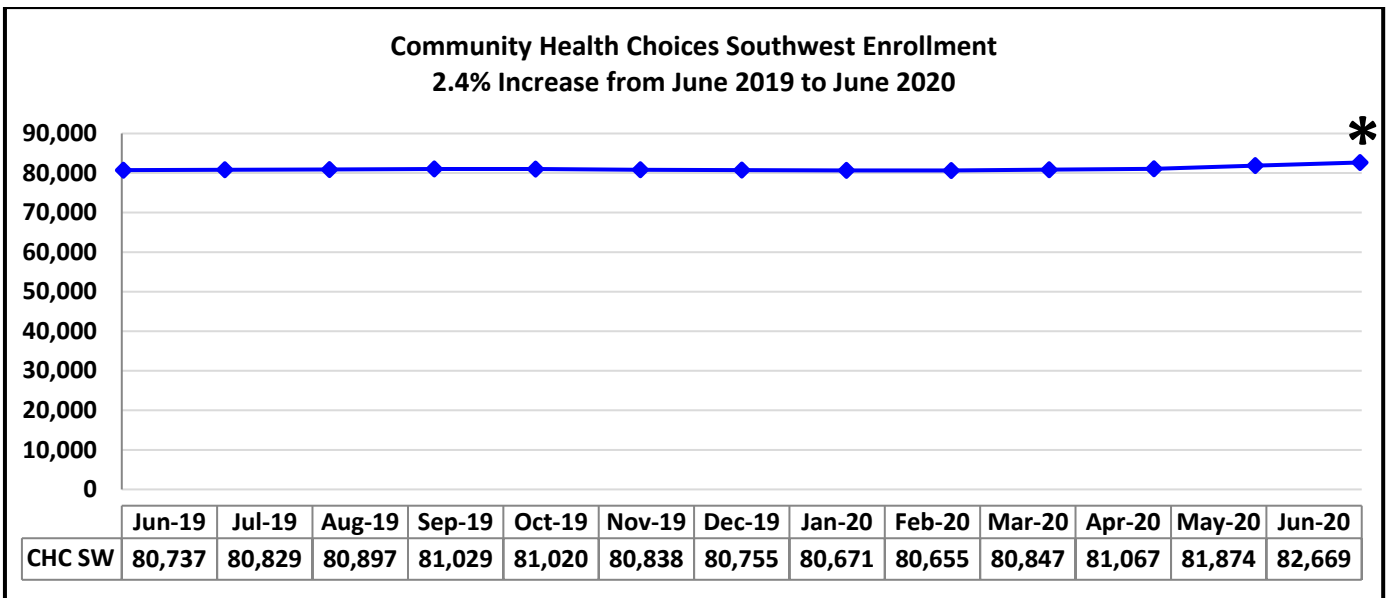
In December 2019, individuals in this waiver were reassessed and some were moved into the Community Health Choices Waiver. Point-in-time (last day of month) count of unduplicated participants with an Approved Service Plan in DHS's case management system. This waiver provides services to recipients who have developmental physical disabilities which results in at least three substantial functional limitations, age 18 through 59; disability manifested prior to age 22, and the disability is expected to continue indefinitely; requires ICF/ORC level of care.



Source: DHS Enterprise Data Warehouse

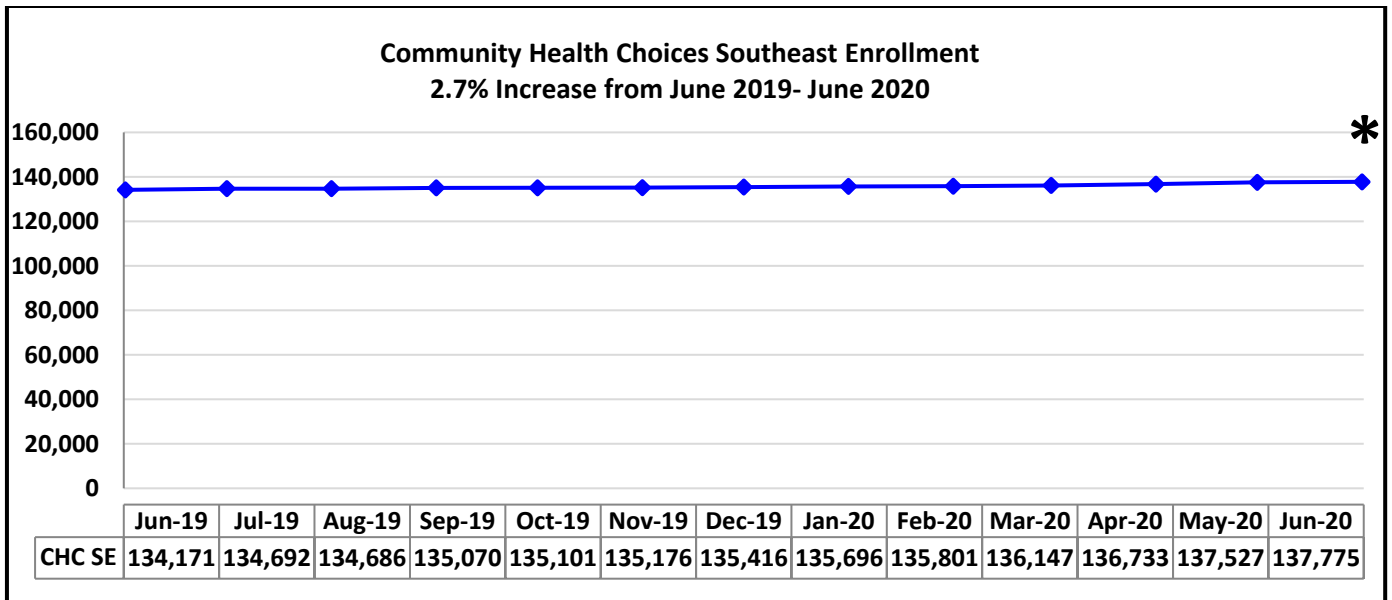
***Preliminary Number – will be updated as additional data becomes available.**

Unduplicated count of recipients which had claims in the month requested. LIFE is a managed care program and provides a comprehensive all-inclusive package of services for Pennsylvanians age 55 or older who meet the level of care needs for a Skilled Nursing Facility or a Special Rehabilitation Facility to enable them to maintain independence in their homes for as long as possible. Be age 55 or older, meet NFCE or a special rehabilitation facility, reside in an area served by a LIFE provider and be able to be safely served in the community as determined by a LIFE provider.



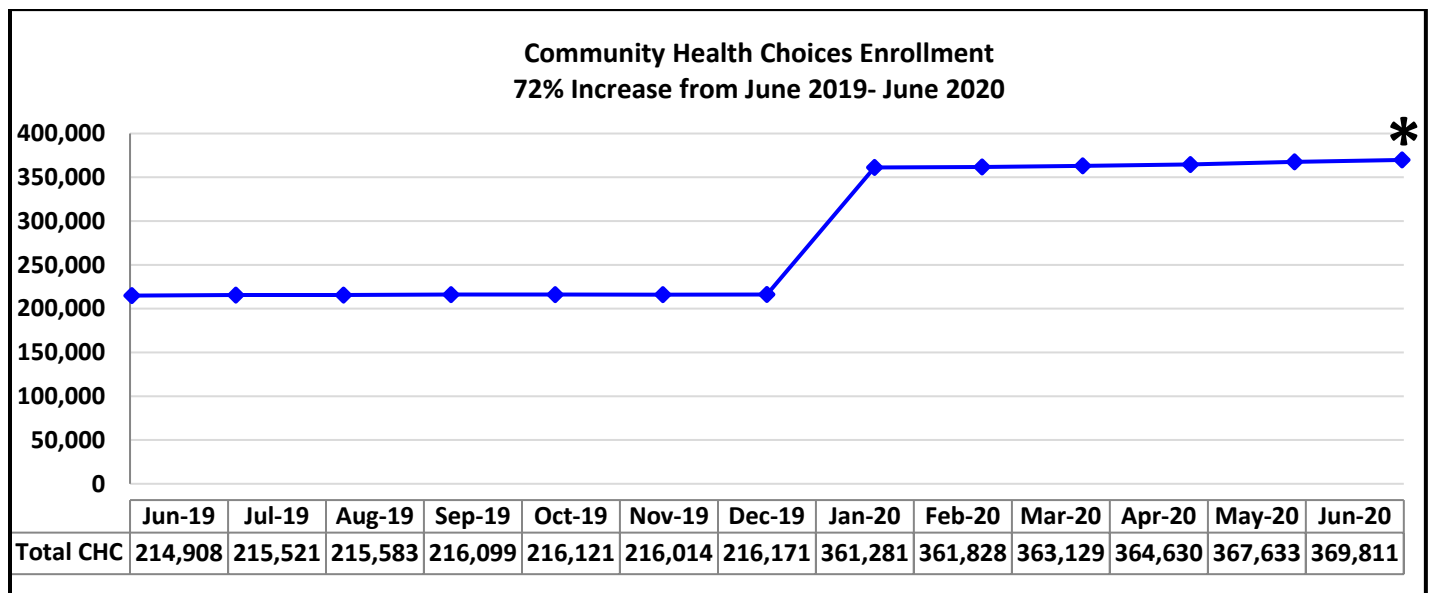
***Preliminary Number – will be updated as additional data becomes available**

CHC includes individuals who are 21 years of age or older and dually eligible for Medicare and Medicaid, and Individuals who are 21 years of age or older and eligible for Medicaid (LTSS) because they need the level of care provided by a nursing facility.



***Preliminary Number – will be updated as additional data becomes available**

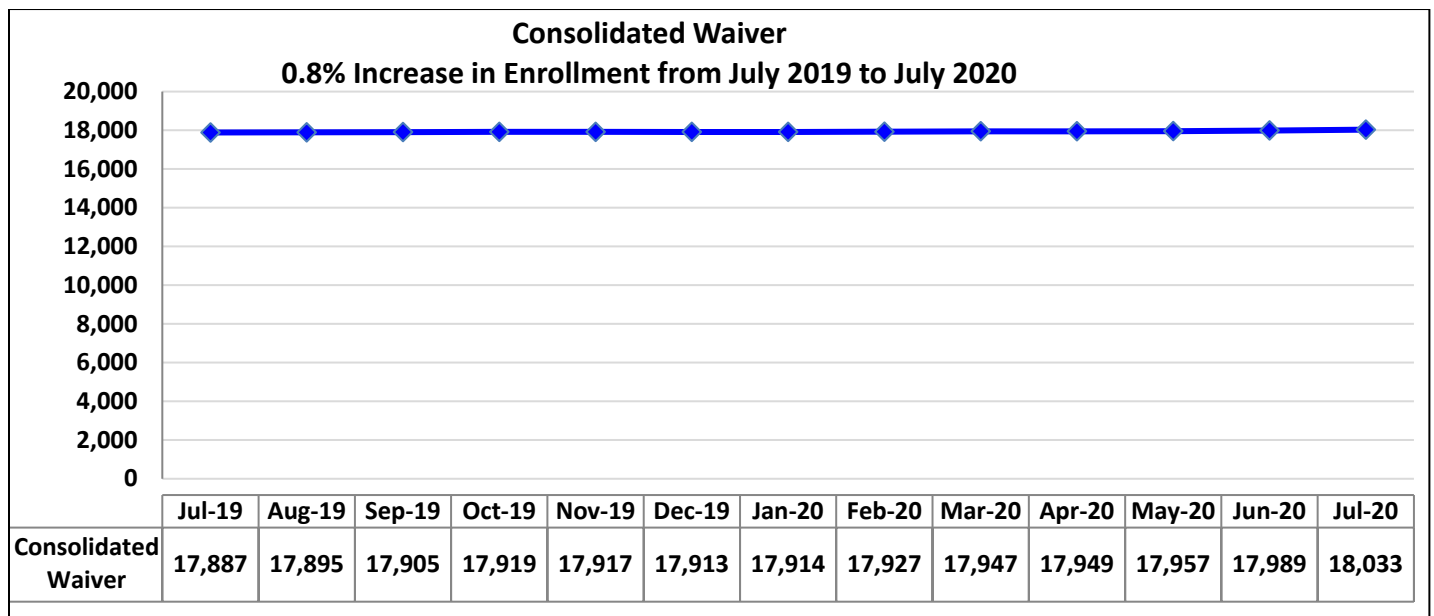
CHC includes individuals who are 21 years of age or older and dually eligible for Medicare and Medicaid, and Individuals who are 21 years of age or older and eligible for Medicaid (LTSS) because they need the level of care provided by a nursing facility.



***Preliminary Number – will be updated as additional data becomes available**

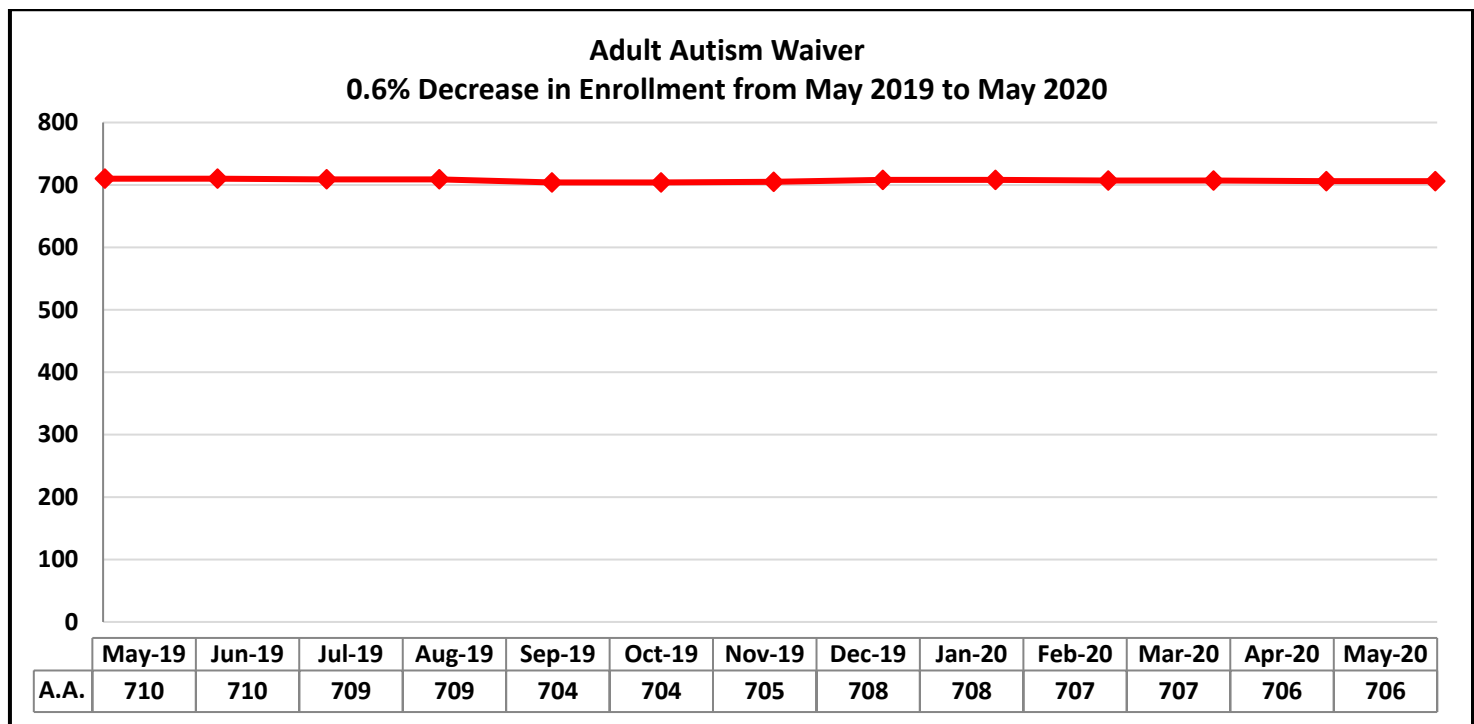
In January 2020, all counties were moved into CHC

CHC includes individuals who are 21 years of age or older and dually eligible for Medicare and Medicaid, and Individuals who are 21 years of age or older and eligible for Medicaid (LTSS) because they need the level of care provided by a nursing facility.



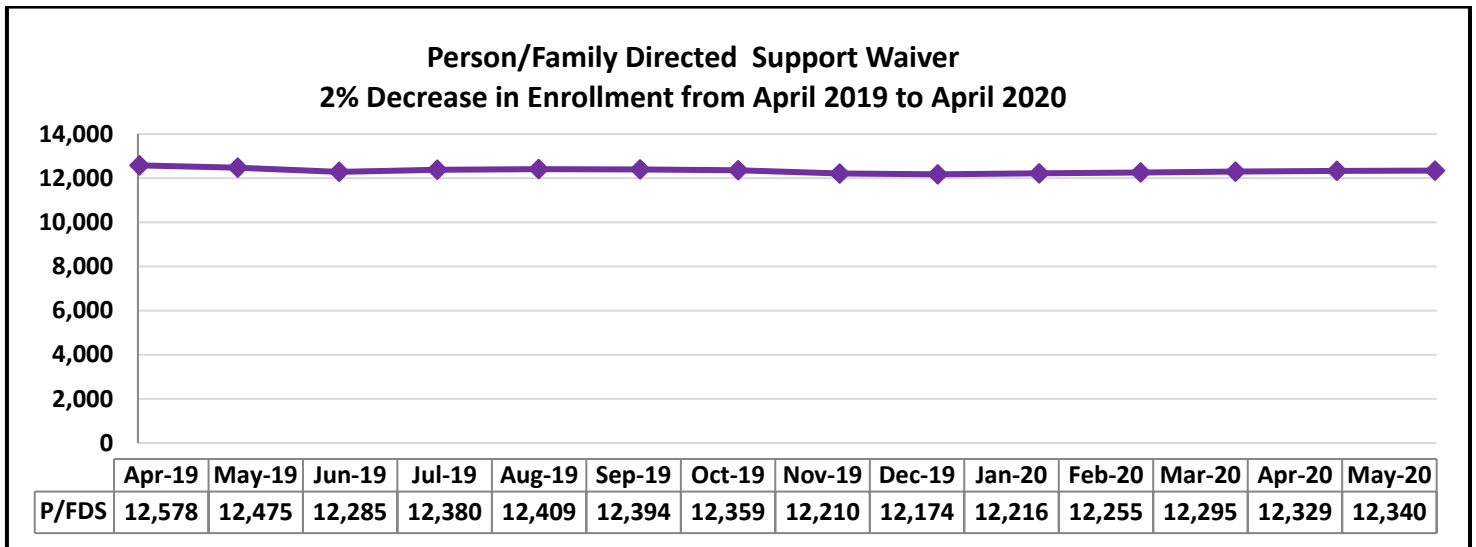
Source: DHS Enterprise Data Warehouse

Provides home and community services, including supports coordination and environmental accessibility adaptations, for individuals with intellectual disabilities who require an intermediate care facility level of care.



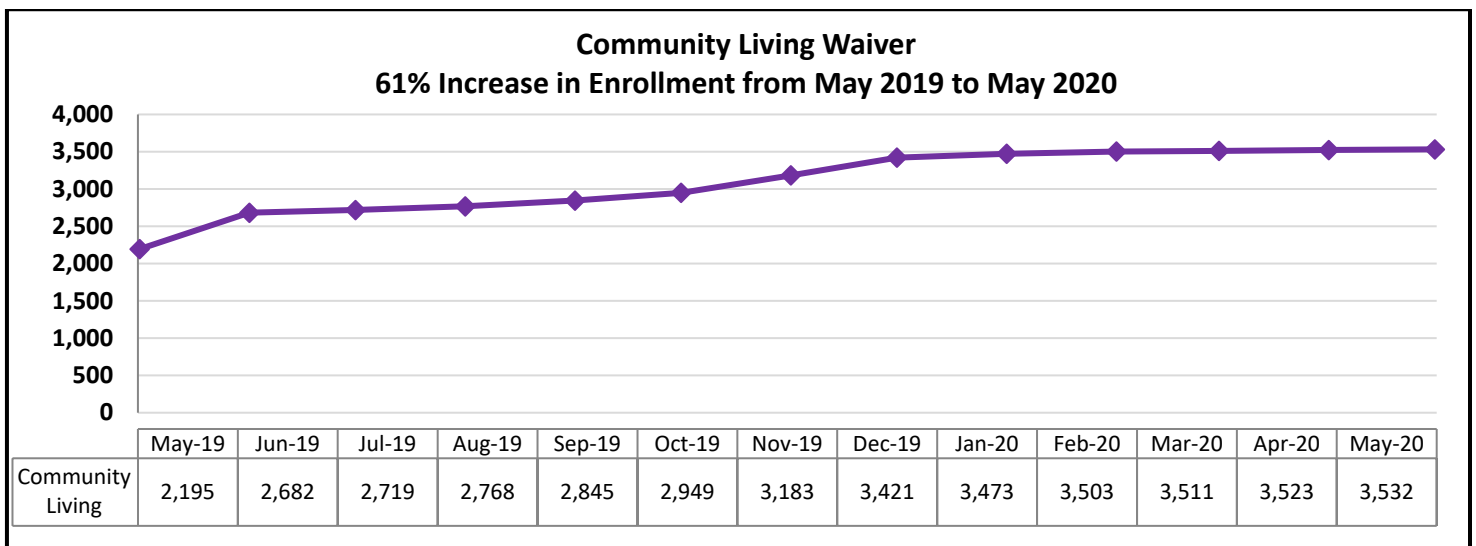
Source: DHS Enterprise Data Warehouse

Provides home and community services to persons, age 21 and over, with autism spectrum disorder to help them participate in their communities.



Source: DHS Enterprise Data Warehouse

Provides a limited array of services and supports, such as therapy and nursing and personal support, to individuals with intellectual disabilities who require an intermediate care facility level of care. Aimed primarily at those residing in their homes or with family members.



Source: DHS Enterprise Data Warehouse

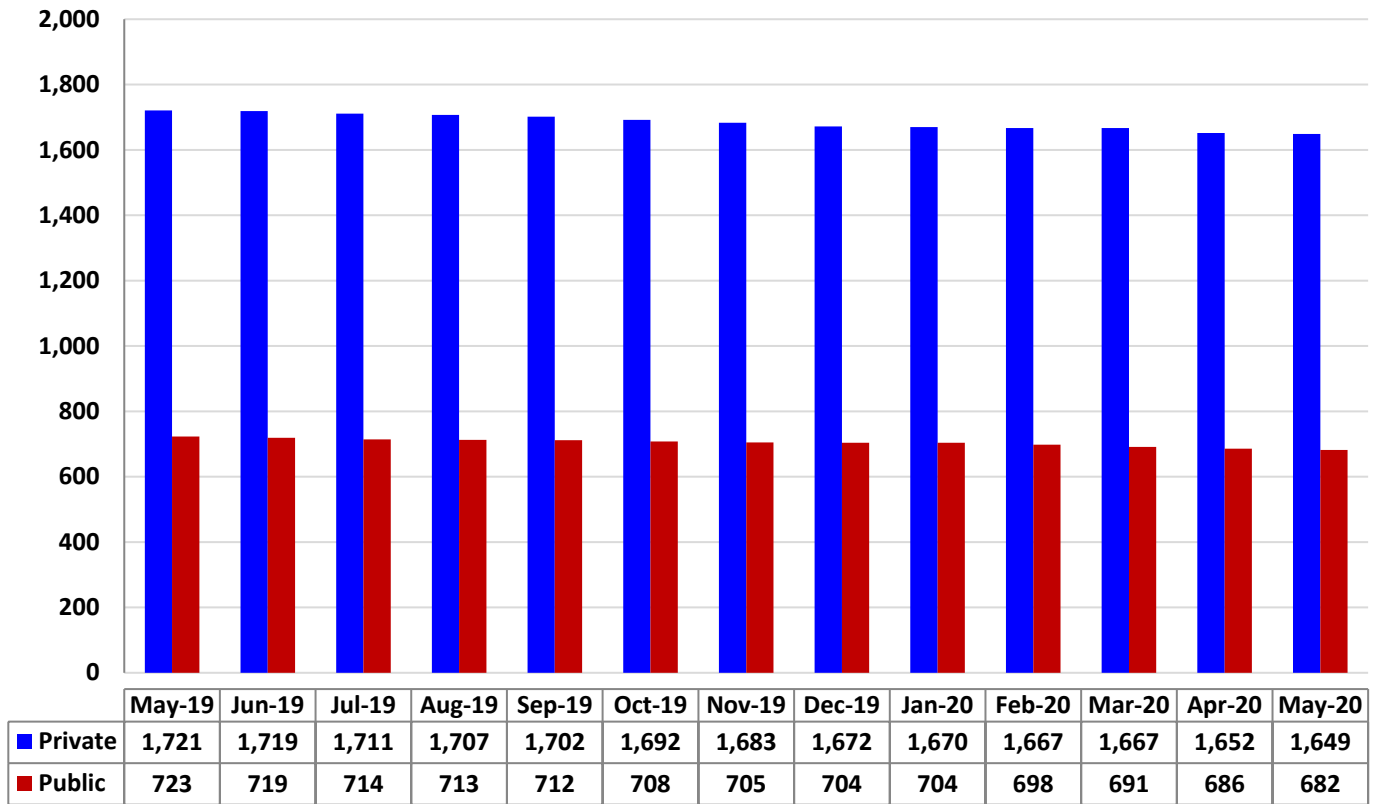
The Community Living Waiver is a new waiver that became effective in January 2018. It will support individuals to live more independently in their homes and communities through the provision of a variety of services that promote community living, employment, communication, self-direction, choice and control.

Residents in Intermediate Care Facilities for Persons with Intellectual Disabilities

(Last Day of Month)

Private ICFs/ID: 4% Decrease in Enrollment from May 2019 to May 2020

Public ICFs/ID: 6% Decrease in Enrollment from May 2019 to May 2020



Source: DHS Enterprise Data Warehouse and Mapper/FACT system

OTHER METRICS

Third Party Liability

	Previous Month	Current Month	FYTD
Recoveries (Casualty, Estate, Health Insurance and HMS)	\$22,091,832 (June 2020)	\$16,487,108 (July 2020)	\$16,487,108
Cost Avoidance (HIPP and Health Insurance)	\$15,661,178 (June 2020)	\$13,726,930 (July 2020)	\$13,726,930

Data Source: TPL Financial Accounting System

Bureau of Program Integrity

	Current Month	FYTD
Provider Review Overpayment Recoveries	\$439,953 (July 2020)	\$439,953
Recipient Restriction Cost Avoidance*	\$1,548,900 (July 2020)	\$1,548,900

Data Source: DHS Executive Dashboard