



**pennsylvania**  
DEPARTMENT OF HUMAN SERVICES

## **Monthly Data Report**

**June 2023**

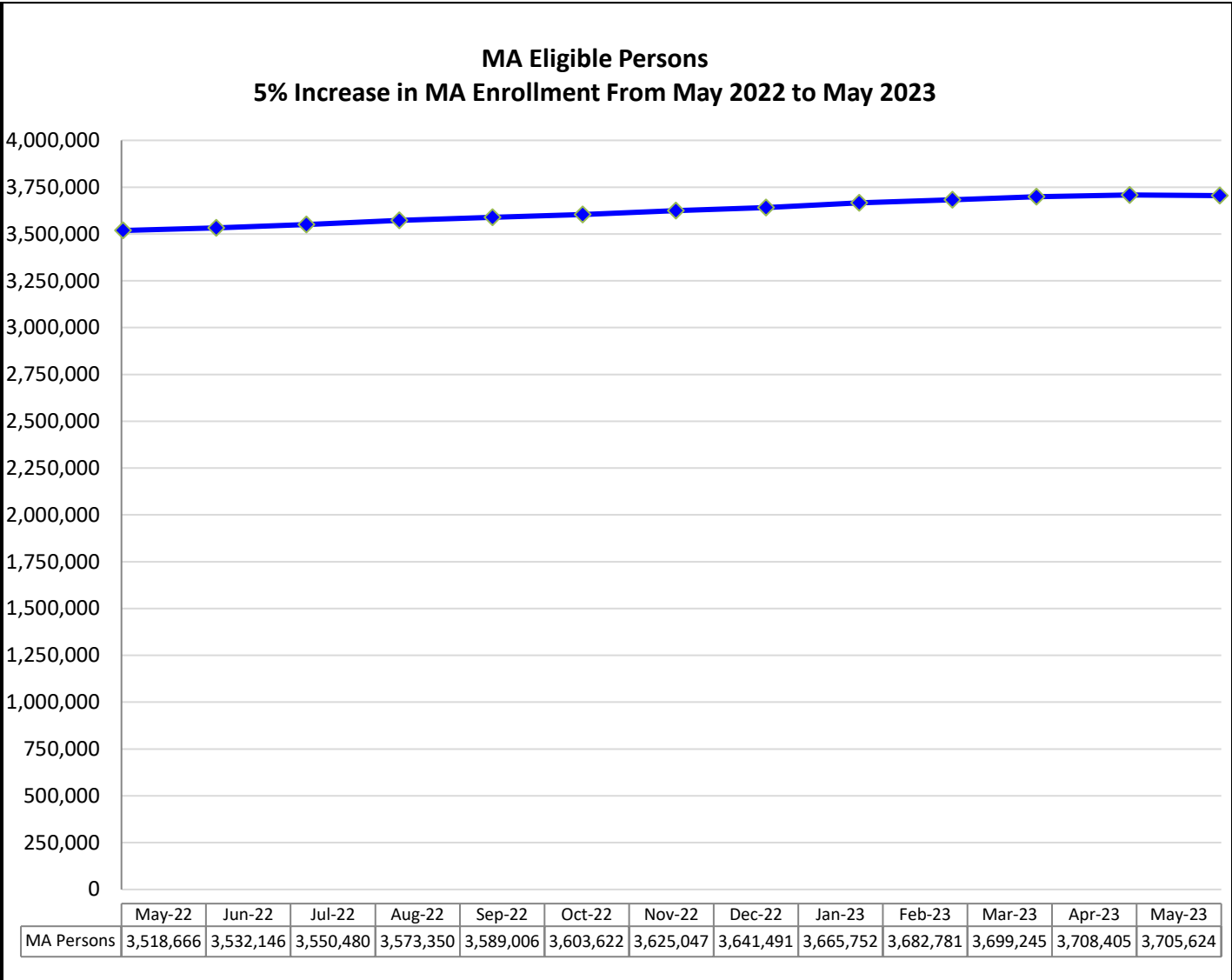
Contact David Chu ([dchu@pa.gov](mailto:dchu@pa.gov)) for questions on report

# **TABLE OF CONTENTS**

*CTRL+Click on one of the major headings below will link you to that section.*

MEDICAL ASSISTANCE AND OTHER HEALTH CARE SERVICES.....	2
MA Eligible Persons.....	2
MA Children and CHIP .....	3
State Hospital Admissions/Census .....	4
BENEFIT ASSISTANCE PROGRAMS FOR CHILDREN AND FAMILIES.....	5
TANF Individuals.....	5
Number and Percent: Non-disabled TANF Adults Working .....	5
Number and Percent: Non-disabled TANF Adults Working/Training 20 or More Hours/Week .....	5
TANF Workforce Participation Rates.....	6
TANF Budgets Leaving for Employment.....	7
Individuals on TANF by Length of Time .....	8
SNAP Eligible Persons .....	9
Non-disabled SNAP Adults Working .....	10
SSI Adults and Children.....	11
Child Support Measures .....	11
CHILD WELFARE SERVICES.....	12
Monthly YDC Admissions.....	12
CHILD CARE AND EARLY LEARNING SERVICES .....	12
Child Care Subsidies-Enrollment-Waiting List.....	12
Regulated Child Care Usage.....	12
Subsidized Child Care: Regulated vs. Unregulated Settings.....	13
Children in STARS 3 or 4.....	14
ITF Waiver and EI: Enrollment .....	14
LONG TERM SUPPORTS FOR PERSONS WITH DISABILITIES AND OLDER PENNSYLVANIANS	15
Waiver Enrollments (OLTL):	
Act 150 .....	15
OBRA .....	15
LIFE.....	16
Community Health Choices.....	16
Wavier Enrollments (ODP):	
Consolidated and Adult Autism.....	17
P/FDS and Community Living .....	18
Community Living Waiver .....	18
Intermediate Care Facilities: Enrollments.....	19
OTHER METRICS .....	19

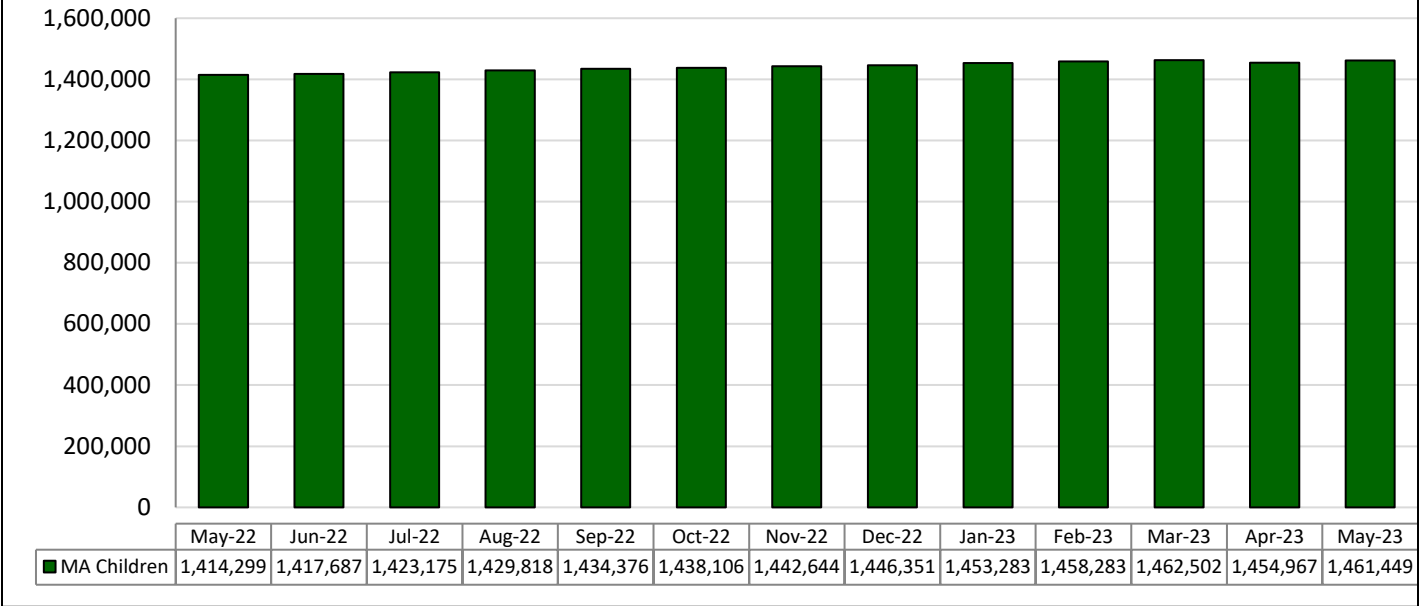
**MEDICAL ASSISTANCE AND OTHER HEALTH CARE SERVICES**



Data Source: DHS ListServ

NOTE: MA numbers now reflect data pulled on the second Tuesday of the month after the reported month. Previous months are not updated to show retroactive eligibility.

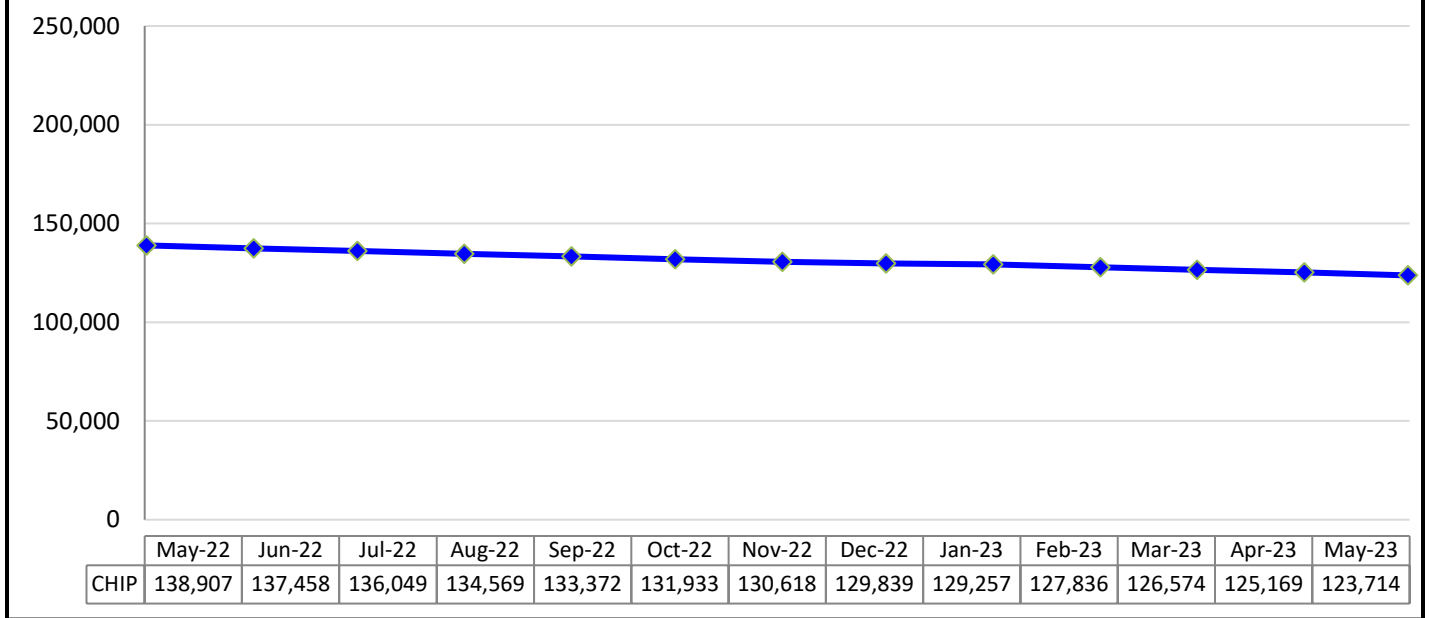
### MA Children Preliminary Estimates ("children" can include persons up to 21 years old)



Data Source: DHS Data Enterprise Warehouse

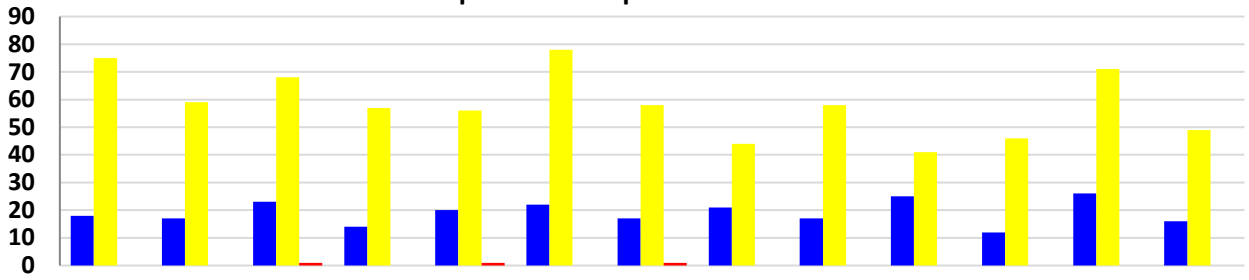
Note: Children are those recipients under the age of 21. (EC (eligible child) is no longer used for determining MA children).

### Children's Health Insurance Program (CHIP) Enrollment 11% Decrease in CHIP Enrollment From May 2022 to May 2023



Data Source: DHS Data Enterprise Warehouse

**State Hospital Admissions**  
**29% Decrease in State Hospital Admissions from**  
**April 2022 to April 2023**



	Apr-22	May-22	Jun-22	Jul-22	Aug-22	Sep-22	Oct-22	Nov-22	Dec-22	Jan-23	Feb-23	Mar-23	Apr-23
■ Civil	18	17	23	14	20	22	17	21	17	25	12	26	16
■ Forensic	75	59	68	57	56	78	58	44	58	41	46	71	49
■ Long Term Care	0	0	<11	0	<11	0	<11	0	0	0	0	0	0

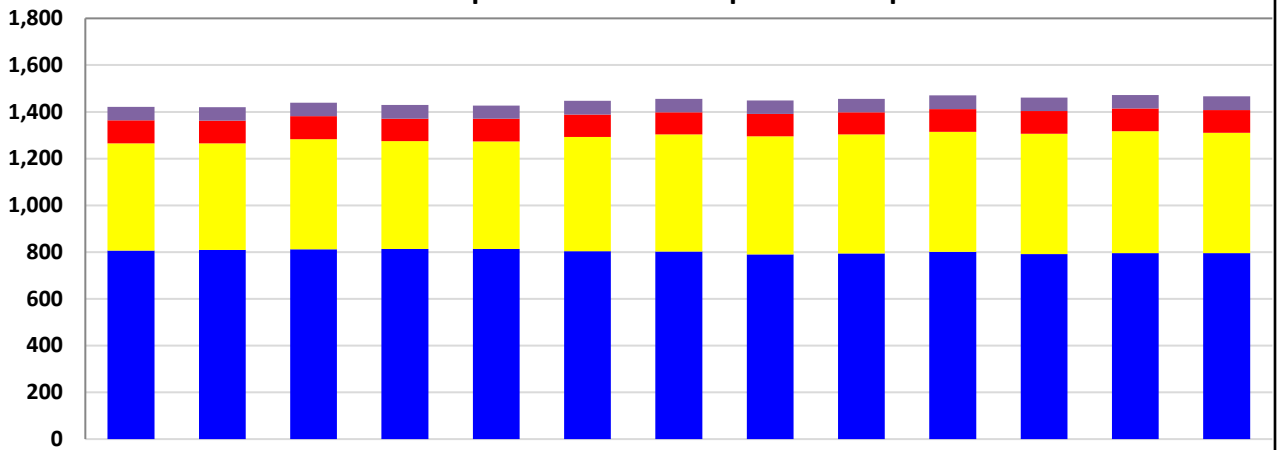
Data Source: Patient Census Information System

**Civil:** Unduplicated count of civil admissions of patients during the reporting month to: Clarks Summit State Hospital, Danville State Hospital, Norristown State Hospital, Torrance State Hospital, Warren State Hospital and Wernersville State Hospital.

**Forensic:** Unduplicated count of forensic admissions of patients during the reporting month to: Norristown State Hospital and Torrance State Hospital forensic units.

**Long Term Care:** Unduplicated count of admissions of patients during the reporting period to: South Mountain Restoration Center.

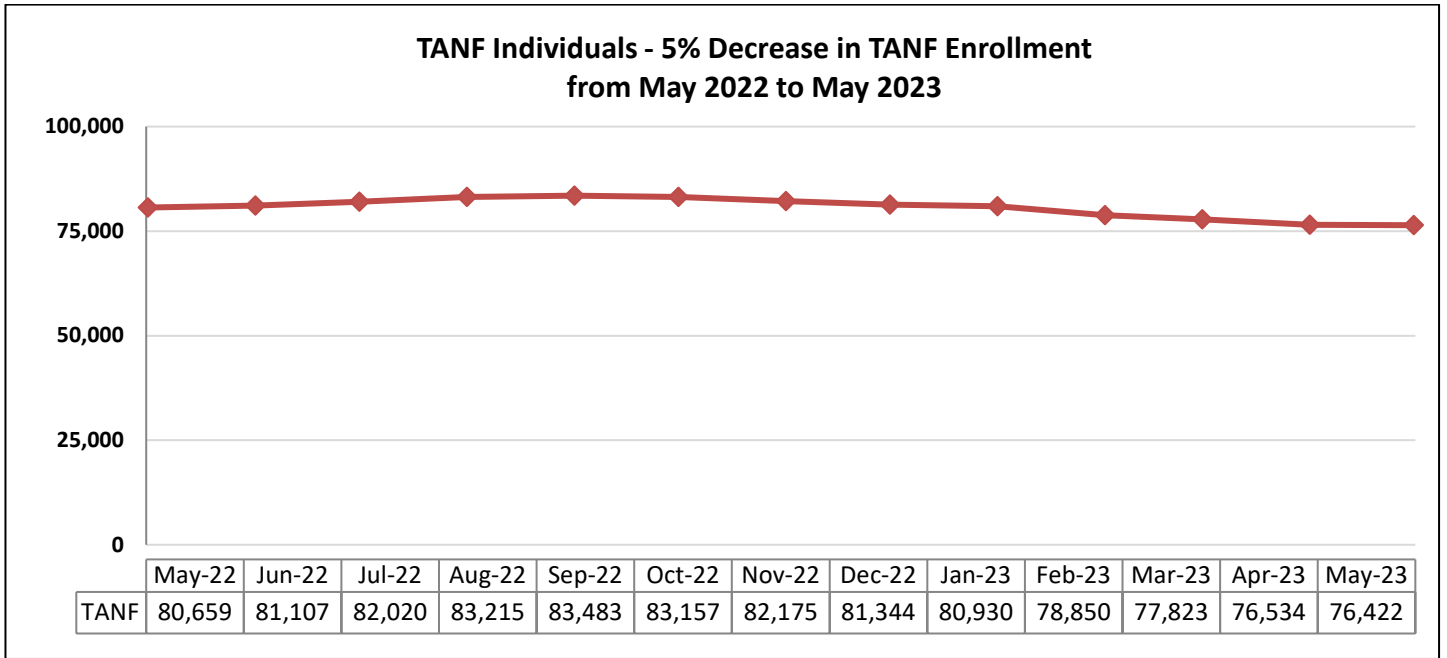
**State Hospitals Census**  
**3.2% Increase in State Hospital Census from April 2022 - April 2023**



	Apr-22	May-22	Jun-22	Jul-22	Aug-22	Sep-22	Oct-22	Nov-22	Dec-22	Jan-23	Feb-23	Mar-23	Apr-23
■ Act 21	57	57	58	58	57	58	58	58	58	58	58	58	58
■ Long Term Care	99	98	98	96	97	97	95	96	95	97	96	97	97
■ Forensic	458	456	471	462	460	488	500	505	509	514	515	521	515
■ Civil	807	809	812	813	813	804	803	790	794	801	792	796	796

Data Source: Patient Census Information System

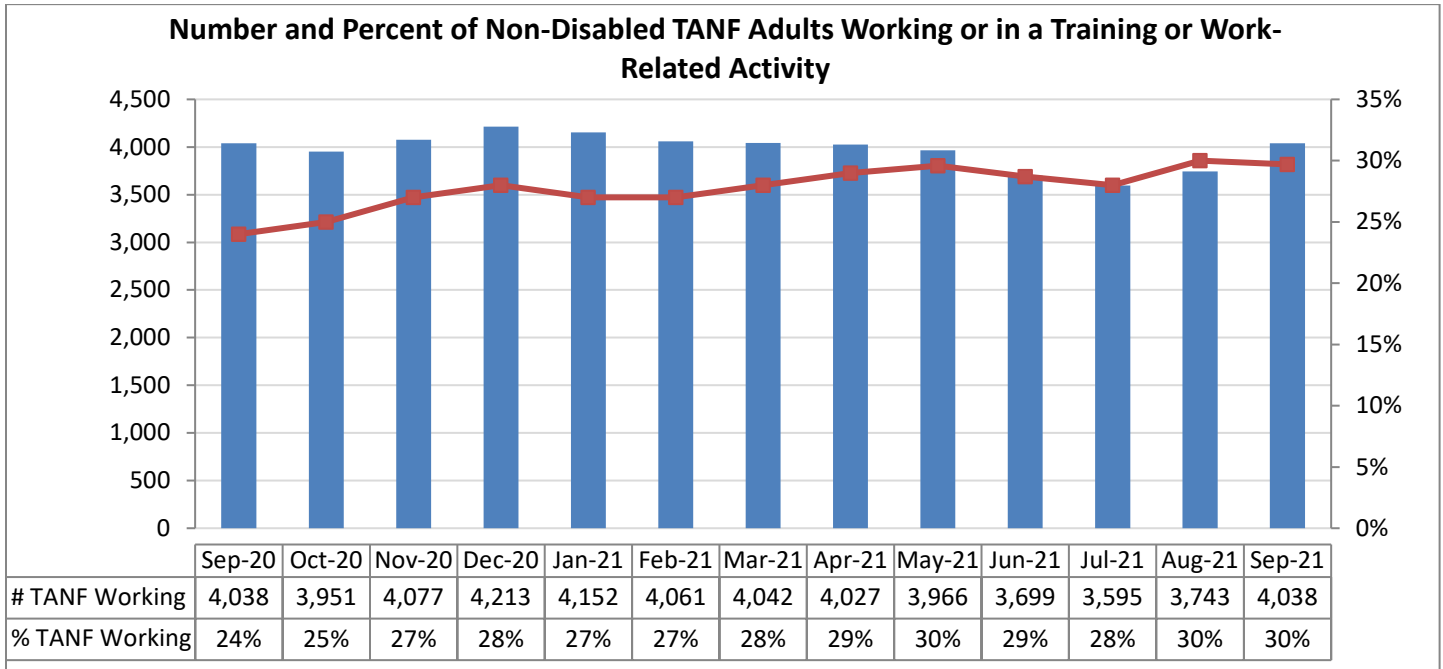
## BENEFIT ASSISTANCE PROGRAMS FOR CHILDREN AND FAMILIES



Data Source: DHS ListServ/EDW

NOTE: TANF numbers now reflect data pulled on the second Tuesday of the month after the reported month.

\*Increase in May 2020 of 10,493 persons are from the EAP. (Emergency Assistance Program). June 2020 includes 2,644 persons from EAP.

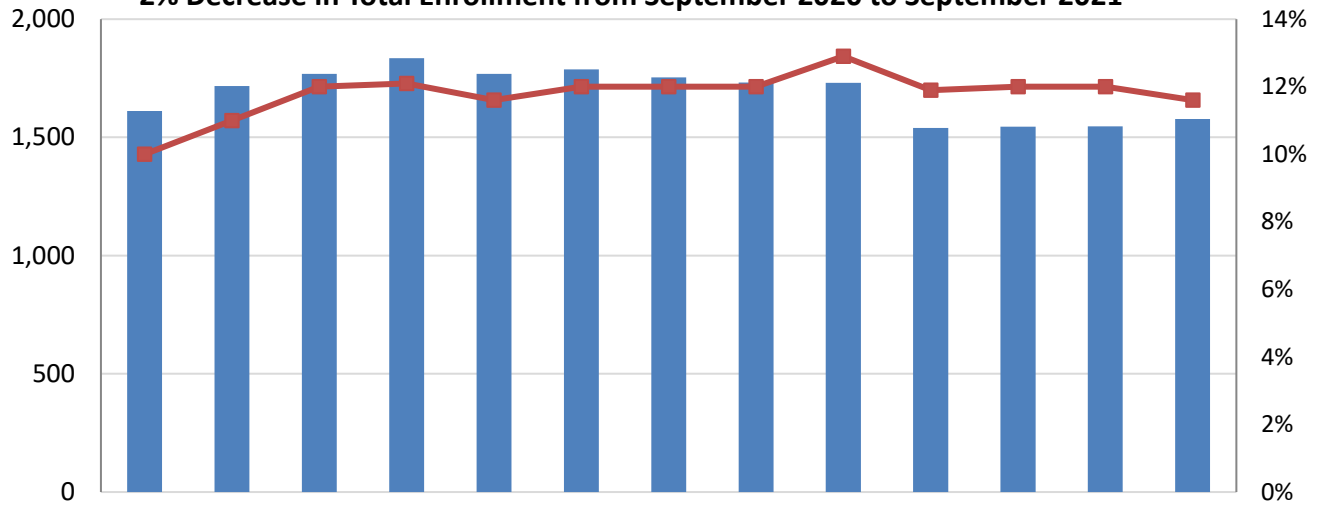


Data Source: AIS32W Report

\*Data has been updated to count only those with open cases

\*February 2020 data missing due to system update.

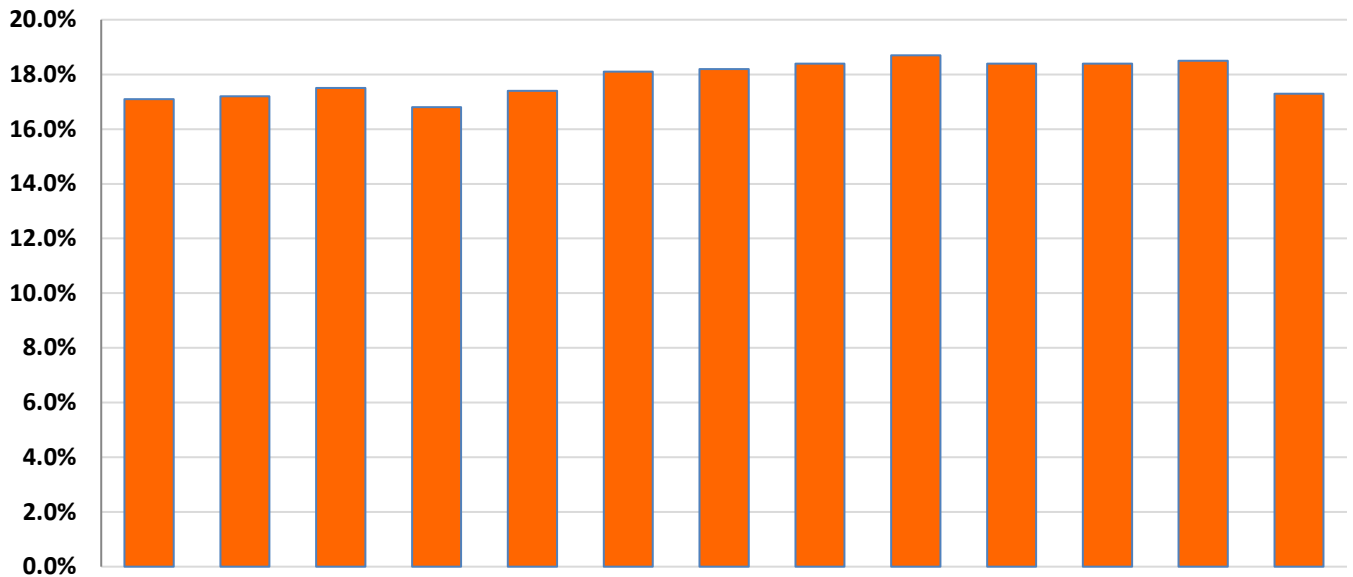
**Number of Non-disabled TANF Adults Working or in a Training Activity or Work-related Activity 20 Hours or More per Week -  
2% Decrease in Total Enrollment from September 2020 to September 2021**



	Sep-20	Oct-20	Nov-20	Dec-20	Jan-21	Feb-21	Mar-21	Apr-21	May-21	Jun-21	Jul-21	Aug-21	Sep-21
# 20 Hrs/Wk	1,612	1,717	1,768	1,835	1,769	1,788	1,754	1,732	1,731	1,540	1,545	1,547	1,578
% 20Hrs/Wk	10%	11%	12%	12%	12%	12%	12%	12%	13%	12%	12%	12%	12%

Data Source: AIS32W Report

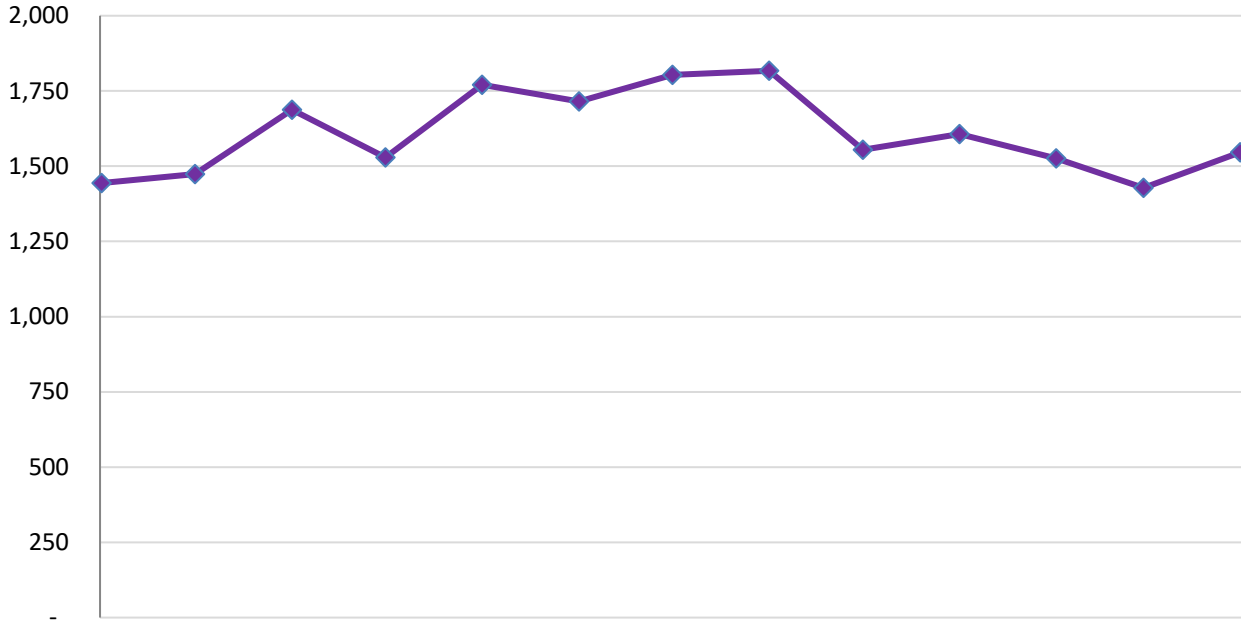
**Pennsylvania Estimated TANF Workforce Participation Rate**



	May-22	Jun-22	Jul-22	Aug-22	Sep-22	Oct-22	Nov-22	Dec-22	Jan-23	Feb-23	Mar-23	Apr-23	May-23
TANF WPR	17.1%	17.2%	17.5%	16.8%	17.4%	18.1%	18.2%	18.4%	18.7%	18.4%	18.4%	18.5%	17.3%

Data Source: TNF22 Report

**TANF Individuals that Obtain Employment  
7% Increase from April 2022 to April 2023**

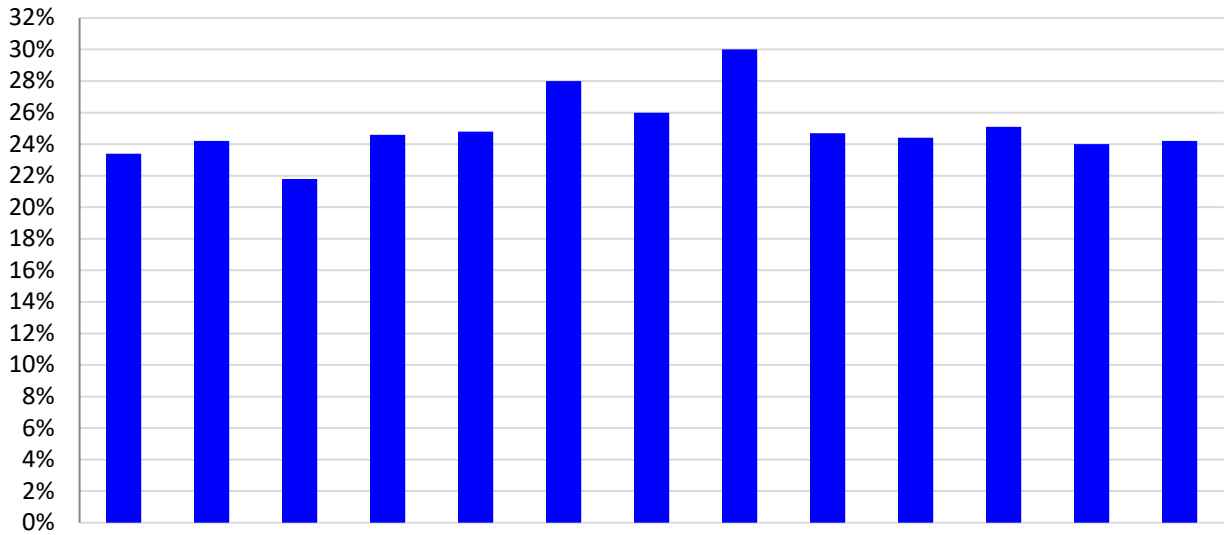


	Apr-22	May-22	Jun-22	Jul-22	Aug-22	Sep-22	Oct-22	Nov-22	Dec-22	Jan-23	Feb-23	Mar-23	Apr-23
TANF Employment	1,444	1,474	1,688	1,529	1,771	1,715	1,804	1,817	1,555	1,607	1,526	1,428	1,546

DHS Data Enterprise Warehouse

A budget is one or more related or unrelated individuals who occupy a common residence or would occupy a common residence if they were not homeless, and whose needs are considered together in determining eligibility for assistance are considered together in determining eligibility for assistance under one category of assistance.

**TANF Budgets Leaving for Employment as Percent of All Budgets that Left TANF**

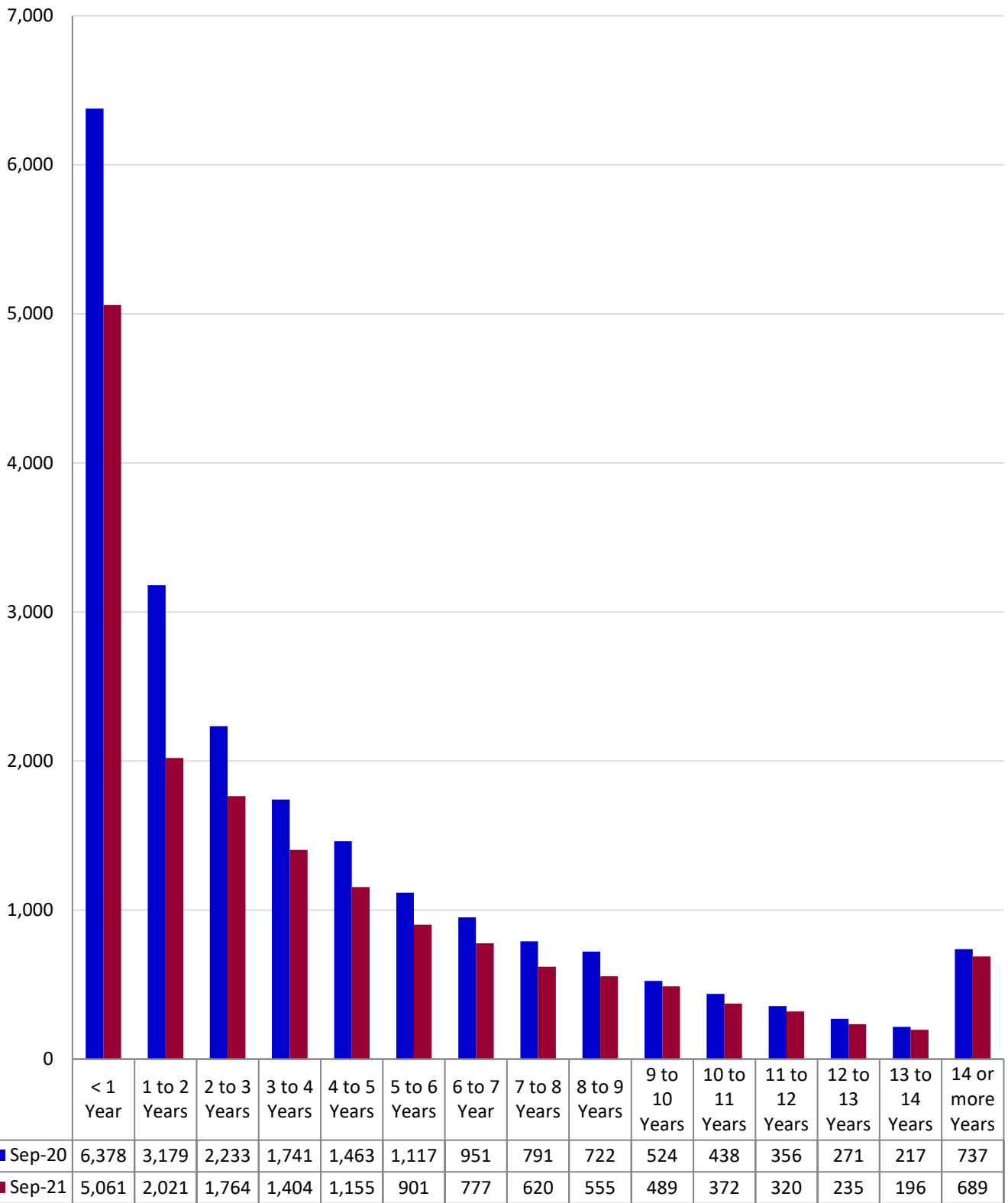


	May-22	Jun-22	Jul-22	Aug-22	Sep-22	Oct-22	Nov-22	Dec-22	Jan-23	Feb-23	Mar-23	Apr-23	May-23
TANF Employment	23%	24%	22%	25%	25%	28%	26%	30%	25%	24%	25%	24%	24%

DHS Data Enterprise Warehouse



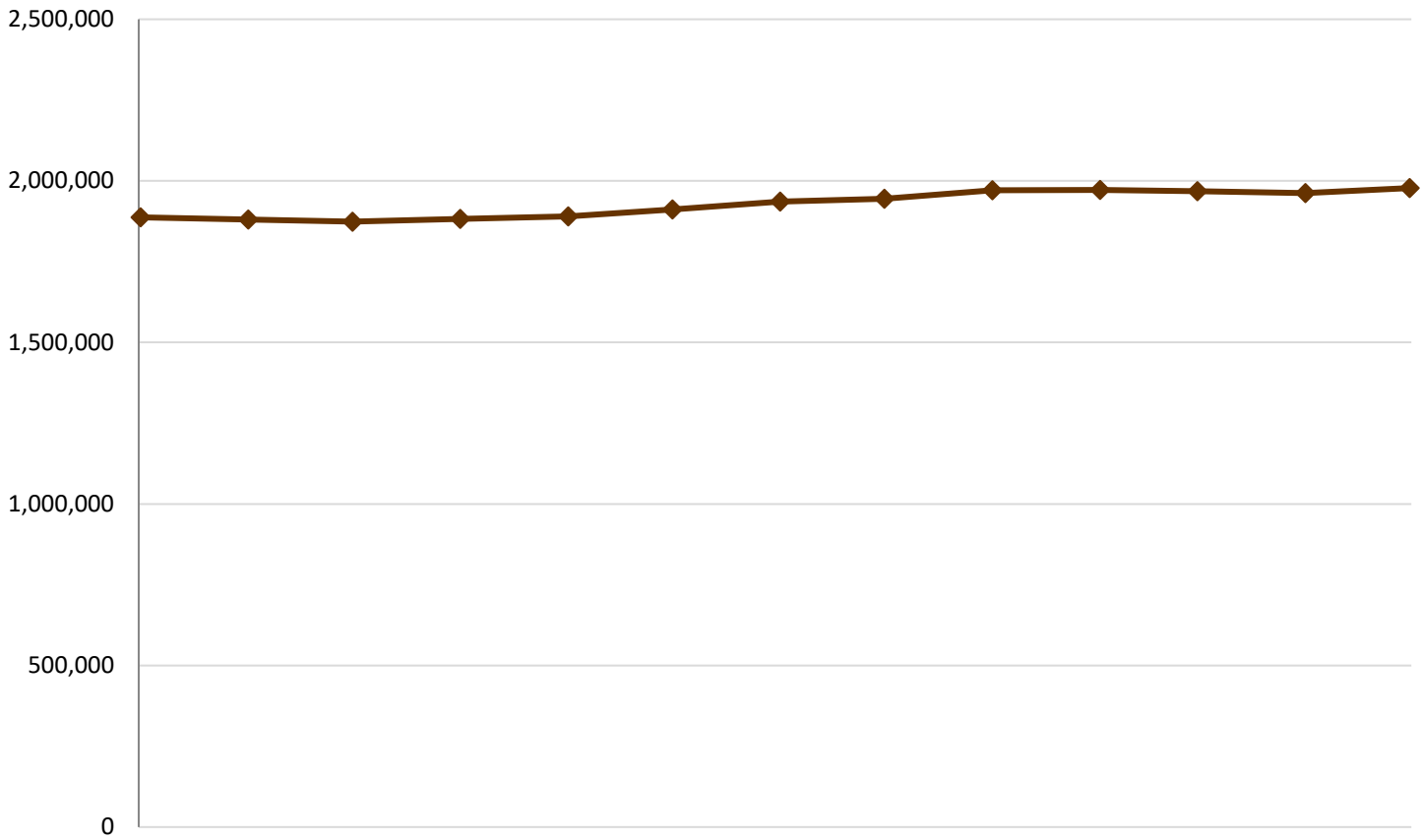
### Adults on TANF by Length of Time



Data Source: AIS32W File

Note: Total time on TANF is cumulative, not subsequent (i.e., as a person moves on and off TANF, each time they are on will add to their total), and also includes time spent on TANF as a child.

**SNAP Eligible Persons**  
**4.8% Increase in SNAP Enrollment from May 2022 to May 2023**

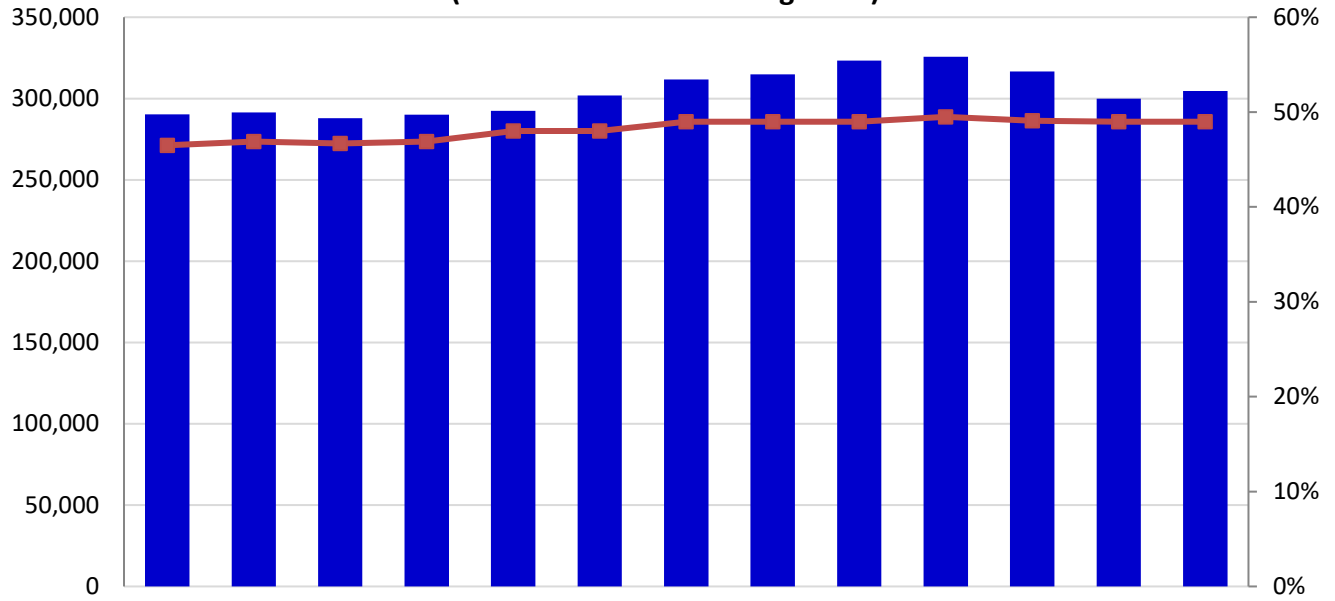


	May-22	Jun-22	Jul-22	Aug-22	Sep-22	Oct-22	Nov-22	Dec-22	Jan-23	Feb-23	Mar-23	Apr-23	May-23
SNAP	1,886,660	1,880,071	1,873,811	1,882,586	1,889,596	1,911,694	1,935,925	1,944,776	1,970,724	1,971,952	1,968,141	1,962,483	1,977,625

Data Source: DHS ListServ/EDW

NOTE: SNAP numbers now reflect data pulled on the second Tuesday of the month after the reported month.

### Number and Percent of Non-disabled SNAP Adults Working (Excludes Those Receiving TANF)\*

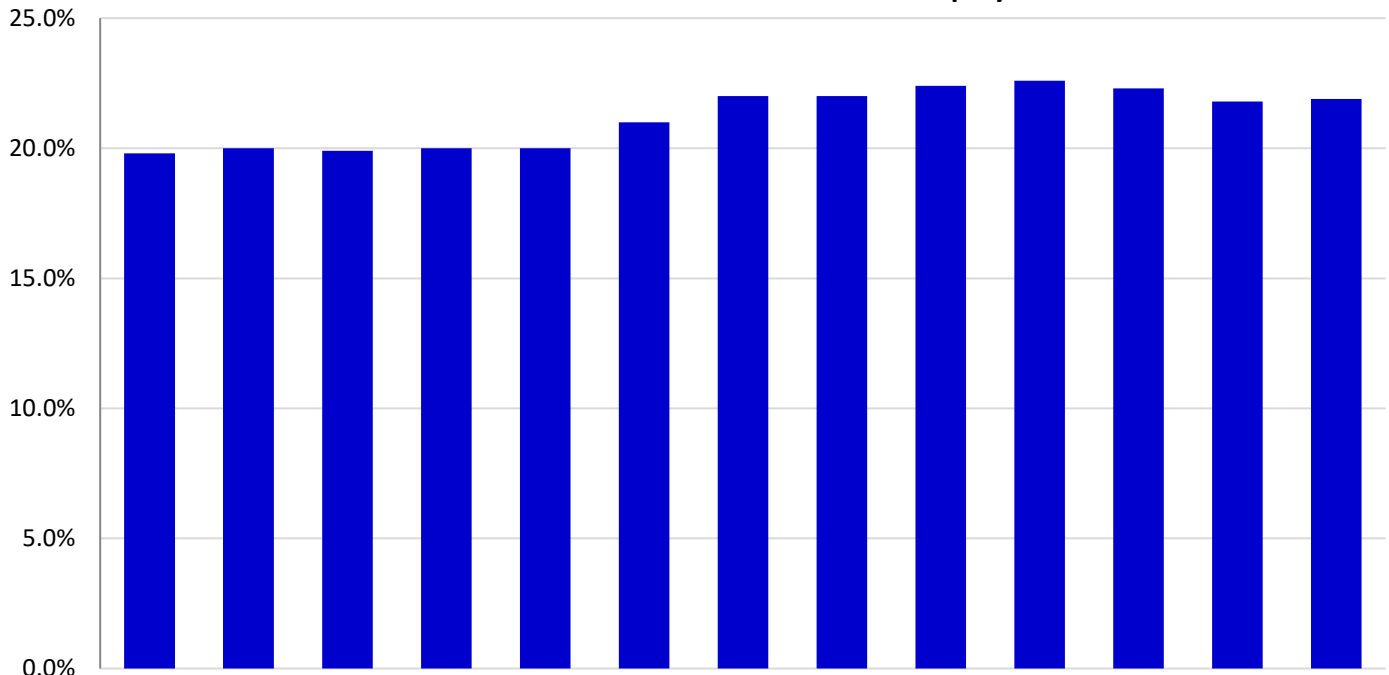


	May-22	Jun-22	Jul-22	Aug-22	Sep-22	Oct-22	Nov-22	Dec-22	Jan-23	Feb-23	Mar-23	Apr-23	May-23
# SNAP Working	290,258	291,511	287,850	290,147	292,397	301,864	311,680	314,900	323,410	325,672	316,596	299,847	304,724
% SNAP Working	47%	47%	47%	47%	48%	48%	49%	49%	49%	50%	49%	49%	49%

\*Beginning in Jan 2018, SNAP Adults working includes non-elderly only.

Data Source: DHS Enterprise Data Warehouse

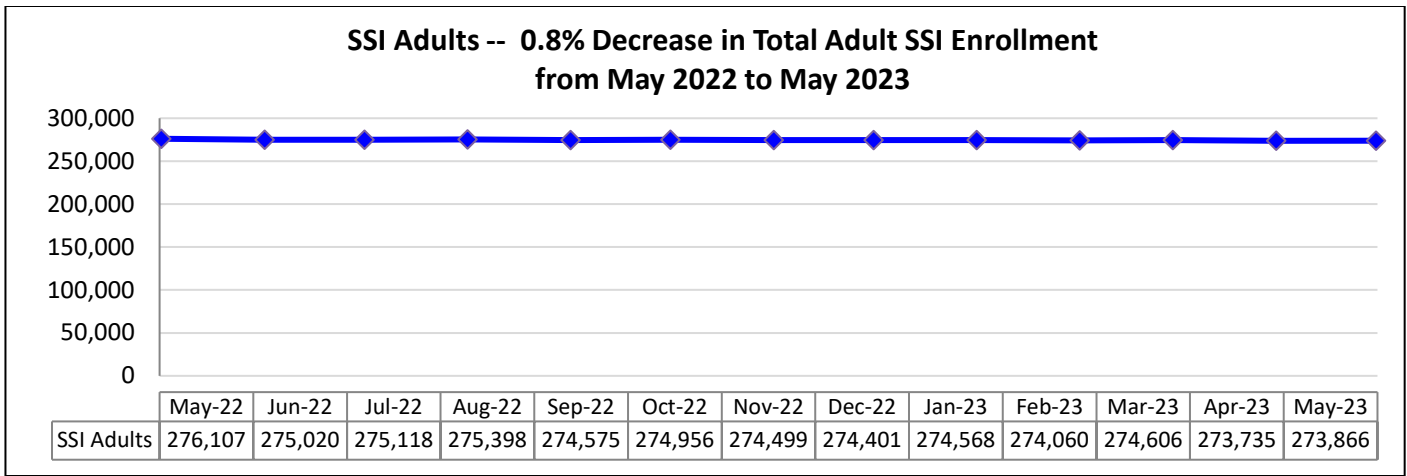
### Percent of Non-disabled SNAP Adults with Full-time Employment\*



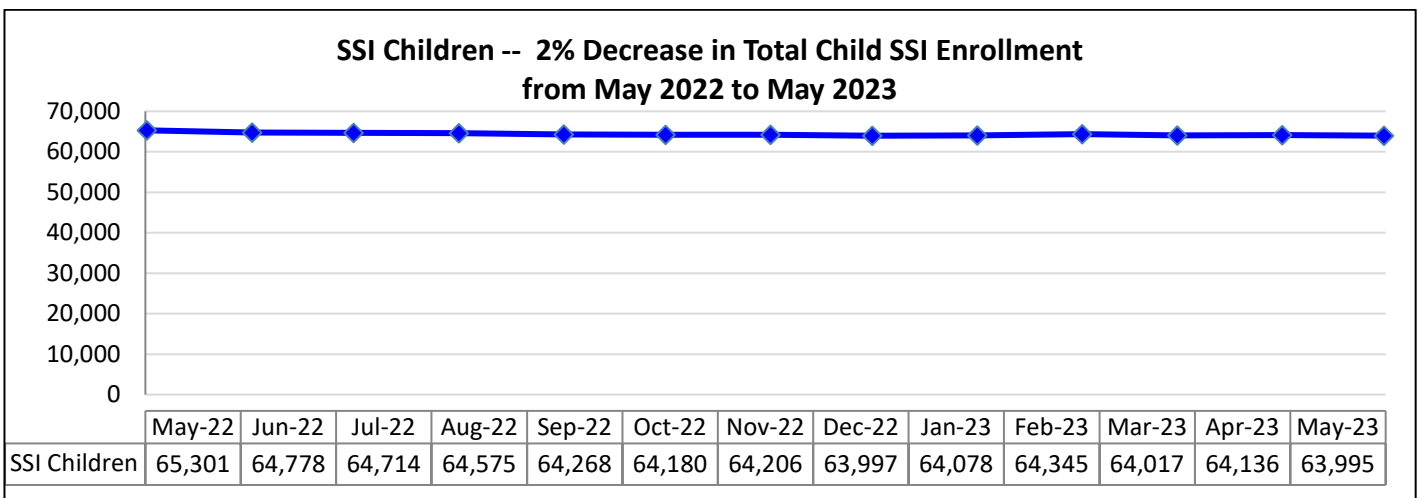
	May-22	Jun-22	Jul-22	Aug-22	Sep-22	Oct-22	Nov-22	Dec-22	Jan-23	Feb-23	Mar-23	Apr-23	May-23
% SNAP Working	19.8%	20.0%	19.9%	20.0%	20.0%	21.0%	22.0%	22.0%	22.4%	22.6%	22.3%	21.8%	21.9%

\*Full-time status according to CIS Employment Status Code

Data Source: DHS Enterprise Data Warehouse



Data Source: DHS Enterprise Data Warehouse



Data Source: DHS Enterprise Data Warehouse

### Child Support Measures

Child Support	Federal Target	Pennsylvania Rate												
		May 2022	Jun 2022	Jul 2022	Aug 2022	Sept 2022	Oct 2022	Nov 2022	Dec 2022	Jan 2023	Feb 2023	Mar 2023	Apr 2023	May 2023
Child Support - Cases with Paternity Establishments**	80%	102%	104%	105%	106%	107%	94%	96%	97%	98%	99%	101%	102%	105%
Child Support - Current Supports Collected	80%	82%	82%	82%	82%	82%	82%	82%	82%	82%	82%	82%	82%	82%
Child Support - Percent of Cases Paying Arrears	80%	78%	80%	81%	82%	83%	45%	54%	63%	68%	70%	76%	77%	80%
Cases with Orders	80%	90%	90%	90%	90%	90%	90%	90%	90%	90%	90%	90%	91%	92%
Cost Effectiveness (FFY)	\$5.00	FFY 2018-19: \$4.78			FFY 2019-20: \$4.49			FFY 2020-21: \$5.13			FFY 2021-22: \$4.80		FFY 2022-23: \$4.31	

\*Drop from September to October due to starting of new Federal Fiscal Year (compare with previous year) Data Source: OCSE Reports

## CHILD WELFARE SERVICES

Category: YDC/YFC's	Current	Average
Monthly Admissions	34 (May 2023)	<b>Rolling Year Average</b> 26 (Jun 2022 – May 2023)
Level of Improvement in Life Skills from Intake to Discharge for all YDC/YFC participants completing program	18.4% (May 2023)	<b>Rolling Year Average</b> 8.9 % (Jun 2022 – May 2023)

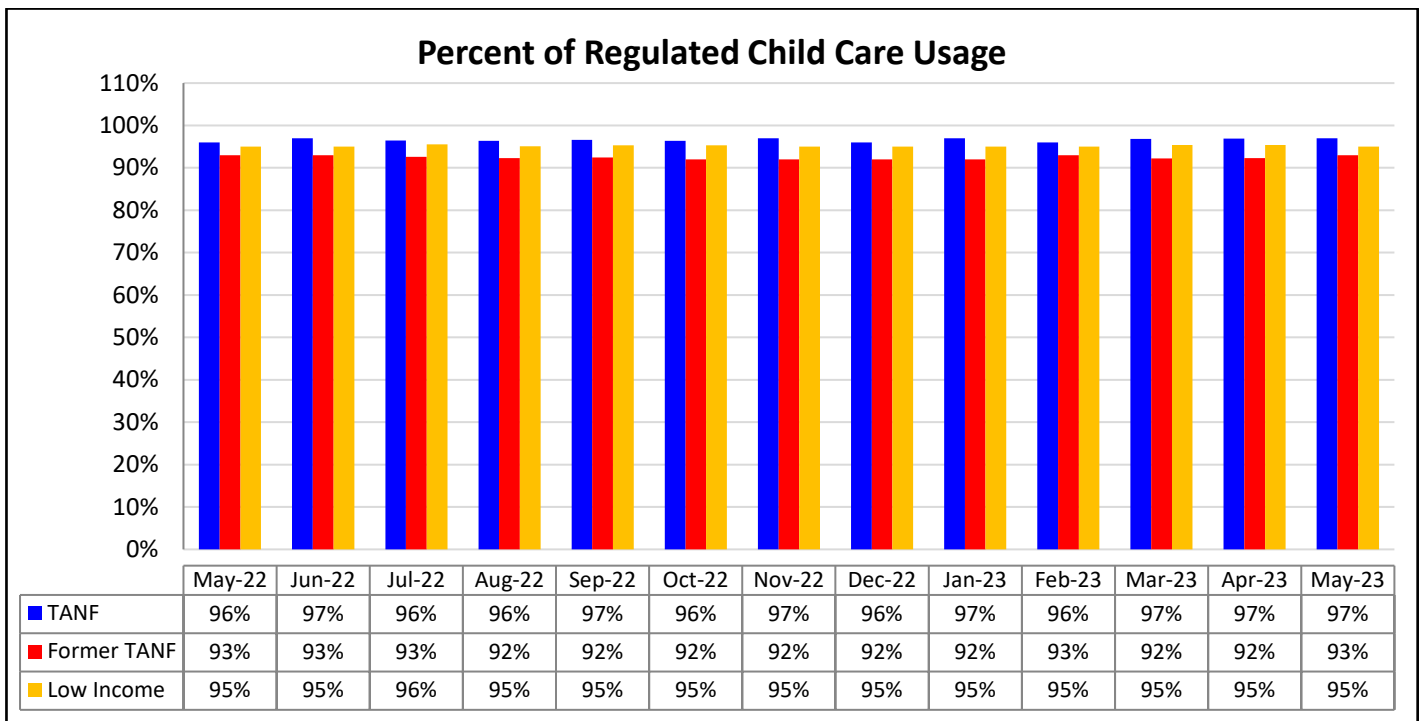
Data Source: Automatic Intake and Incident Reporting System (admissions); Ansell-Casey Life Skills Assessment (life skills)

## CHILD CARE AND EARLY LEARNING SERVICES

Child Care Subsidies	Number of Children Receiving* (May 2023)	Encumbrance (May 2023)	# on Waiting List (May 2023)
TANF	4,546	90.6%	0
Former TANF	14,308	47.7%	0
Low Income	70,338	86.3%	1

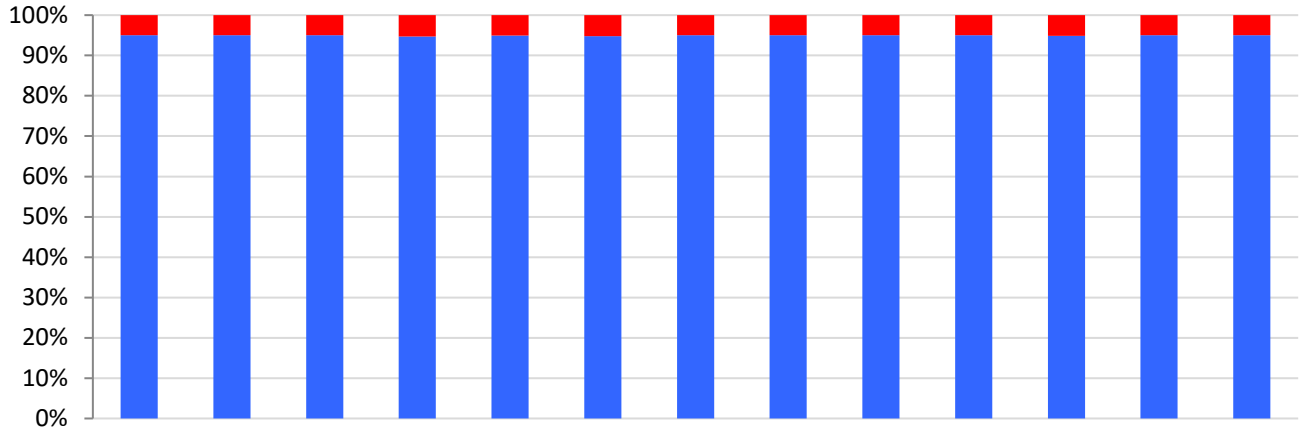
Data Sources: PELICAN CCW and PELICAN Child Care DW

\*Preliminary Number – final number will be determined as additional data becomes available.



Data Source: PELICAN CCW

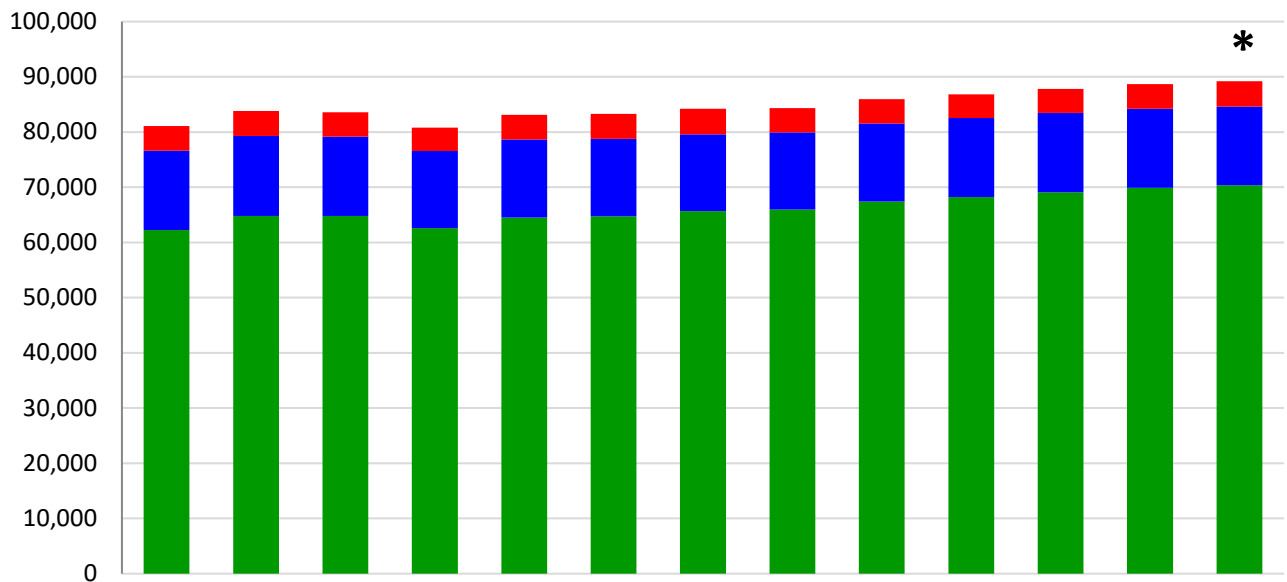
### Percent of Children Receiving Subsidized Child Care in Regulated Versus Unregulated Settings



	May-22	Jun-22	Jul-22	Aug-22	Sep-22	Oct-22	Nov-22	Dec-22	Jan-23	Feb-23	Mar-23	Apr-23	May-23
■ Unregulated	5%	5%	5%	5%	5%	5%	5%	5%	5%	5%	5%	5%	5%
■ Regulated	95%	95%	95%	95%	95%	95%	95%	95%	95%	95%	95%	95%	95%

Data Source: PELICAN CCW

### Children Receiving Subsidized Child Care

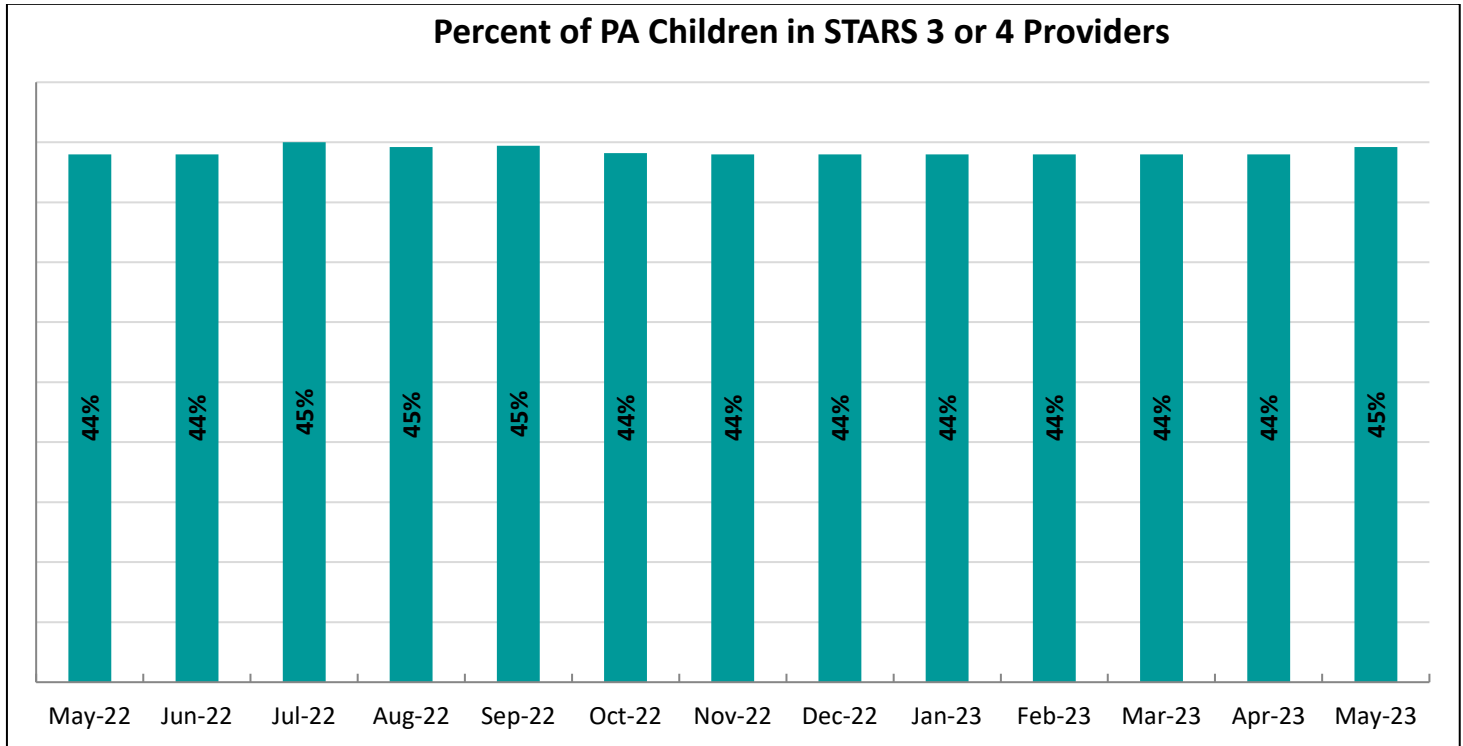


	May-22	Jun-22	Jul-22	Aug-22	Sep-22	Oct-22	Nov-22	Dec-22	Jan-23	Feb-23	Mar-23	Apr-23	May-23
■ TANF	4,461	4,542	4,380	4,239	4,455	4,570	4,622	4,396	4,403	4,319	4,346	4,439	4,546
■ Former TANF	14,370	14,457	14,381	13,993	14,149	13,976	13,931	13,964	14,145	14,318	14,359	14,322	14,308
■ Low Income	62,243	64,804	64,798	62,574	64,510	64,768	65,642	65,975	67,428	68,194	69,111	69,894	70,338

\*Preliminary Numbers – final numbers will be determined as additional data becomes available Data Source: PELICAN CCW  
 NOTE: Beginning July 2012, number of children being served has decreased due to correction of a contractor error where children on the waiting list were being counted as receiving services.

Keystone STARS	Current	Historical
% of Keystone STARS Providers at STAR 3 or STAR 4	30% (May 2023)	30% (April 2023)

Data Source: PELICAN KTQ



Data Source: PELICAN CCW

Infants, Toddlers, and Families Waiver and Early Intervention (0-3)	Current	Historical
Early Intervention Enrollment (1-day Count)	27,674 (May 2023)	27,208 (Apr 2023)
Early Intervention Enrollment (Unduplicated Total)	27,655 (May 2023)	27,208 (Apr 2023)
Waiver (Monthly Average)	2,615 (May 2023)	2,456 (Apr 2023)
Children Who Met EI Goals Prior to 3 <sup>rd</sup> Birthday	276 (26%) (May 2023)	238 (23%) (Apr 2023)

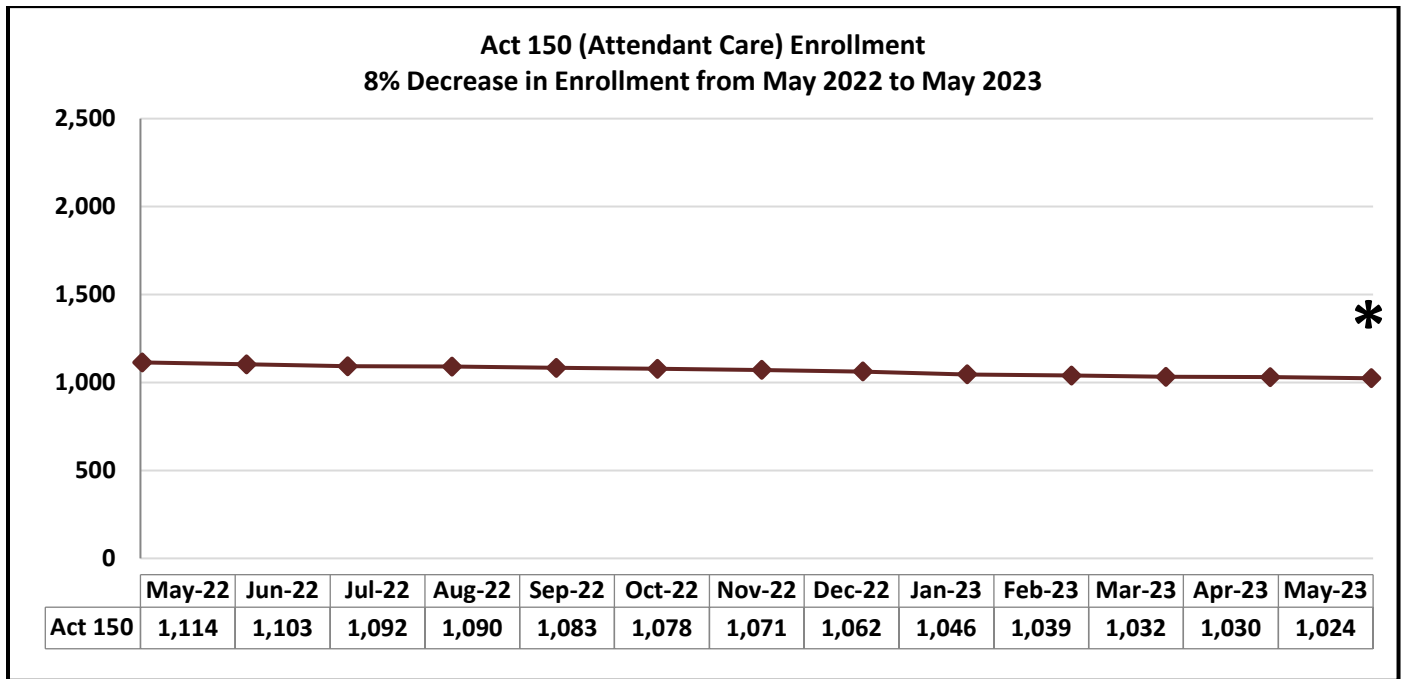
Data Sources: HCSIS DW, EI Ad Hoc Reporting Tool

**Early Intervention Enrollment** – The total number of children currently receiving services and supports through the EI program. The count of children (birth to three) who have a 25% delay in one or more of the following areas: cognitive development; physical development including vision and hearing; communication development; social or emotional development; or adaptive development.

**ITF Waiver Enrollment** – The total number of children currently receiving services and supports through the Infants, Toddlers, and Families Waiver. The count of children (birth to three) who are eligible for Medical Assistance, have a 50% delay in one area or 33% delay in two areas, and receive services in the home or a community setting.

**Early Intervention Children Who Met EI Goals Prior to 3<sup>rd</sup> Birthday** – Of children receiving early intervention services between the ages of zero and three, the number who meet their developmental goals by their 3<sup>rd</sup> birthday.

## LONG TERM SUPPORTS FOR PERSONS WITH DISABILITIES AND OLDER PENNSYLVANIANS

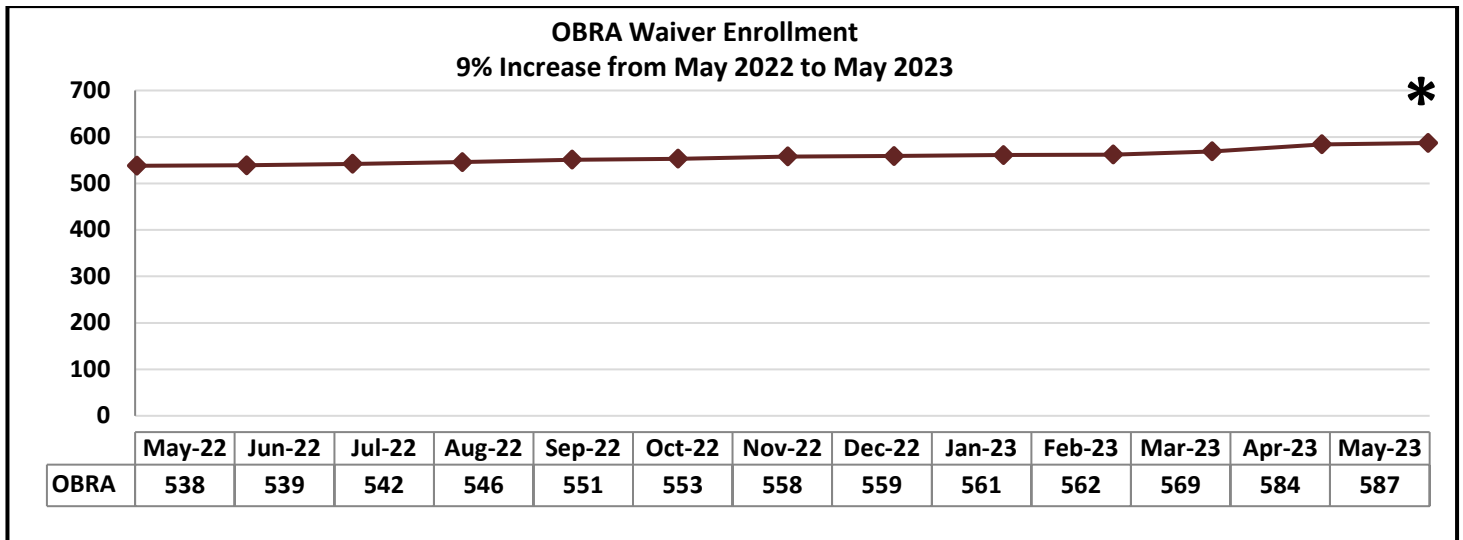


Source: DHS Enterprise Data Warehouse

**\*Preliminary Number – will be updated as additional data becomes available**

Data is for statewide Fee for Service enrollment only.

Point-in-time (last day of month) count of unduplicated participants with an Approved Service Plan in DHS’s case management system. The Act 150 provides service coordination, personal assistance and personal emergency response system to individuals with physical disabilities, age 18 through 59, who are mentally alert. This waiver also provides community transition services. This is a state funded program. Participants must be NFCE but are not financially eligible for Medicaid.

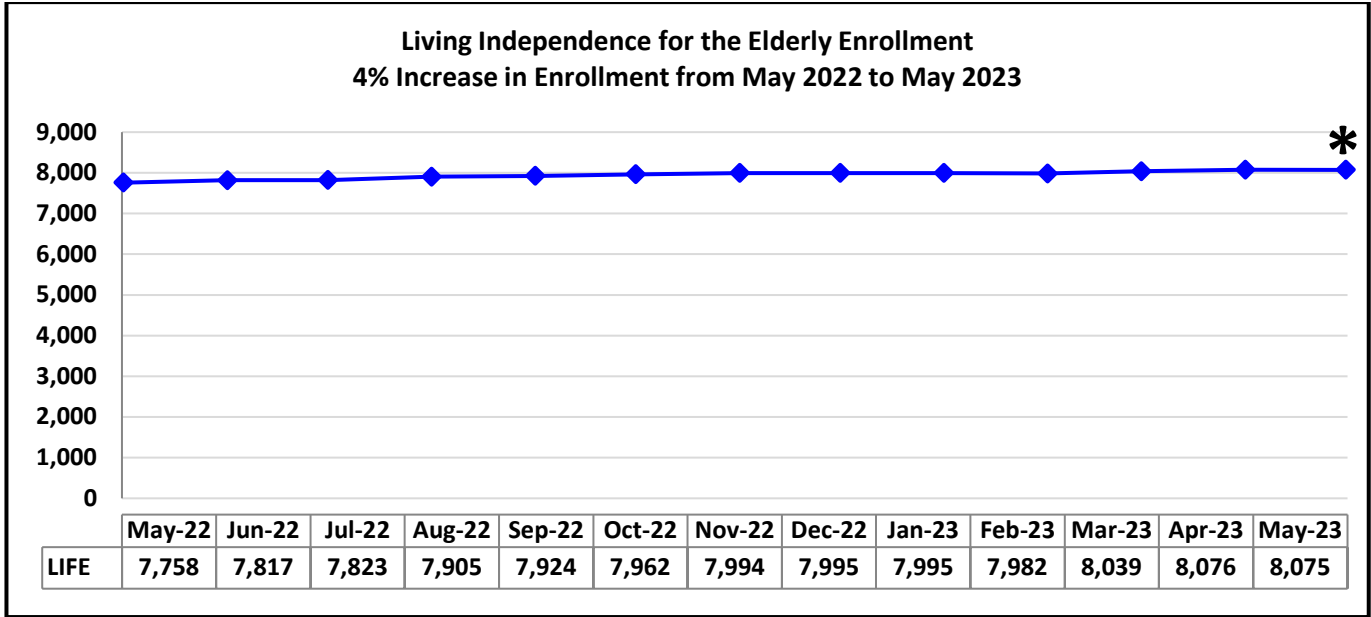


Source: DHS Enterprise Data Warehouse

**\*Preliminary Number – will be updated as additional data becomes available**

In December 2019, individuals in this waiver were reassessed and some were moved into the Community Health Choices Waiver. Point-in-time (last day of month) count of unduplicated participants with an Approved Service Plan in DHS’s case management system. This waiver provides services to recipients who have developmental physical disabilities which results in at least three substantial functional limitations, age 18 through 59; disability manifested prior to age 22, and the disability is expected to continue indefinitely; requires ICF/ORC level of care.

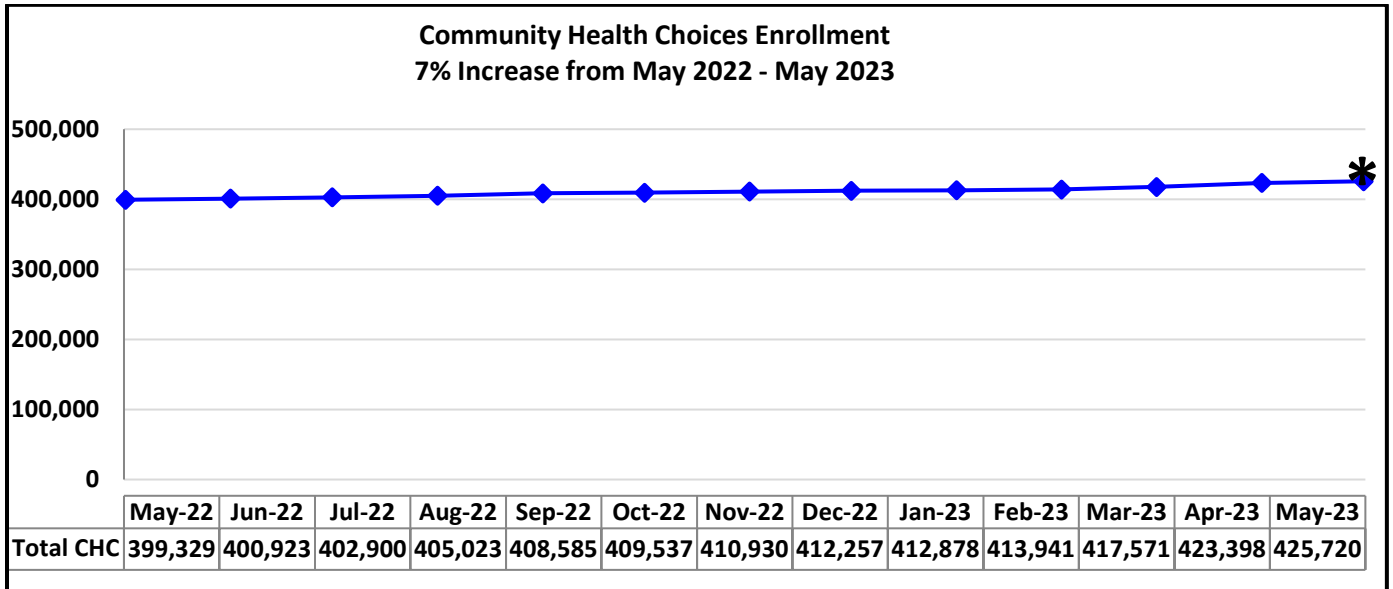




Source: DHS Enterprise Data Warehouse

**\*Preliminary Number – will be updated as additional data becomes available.**

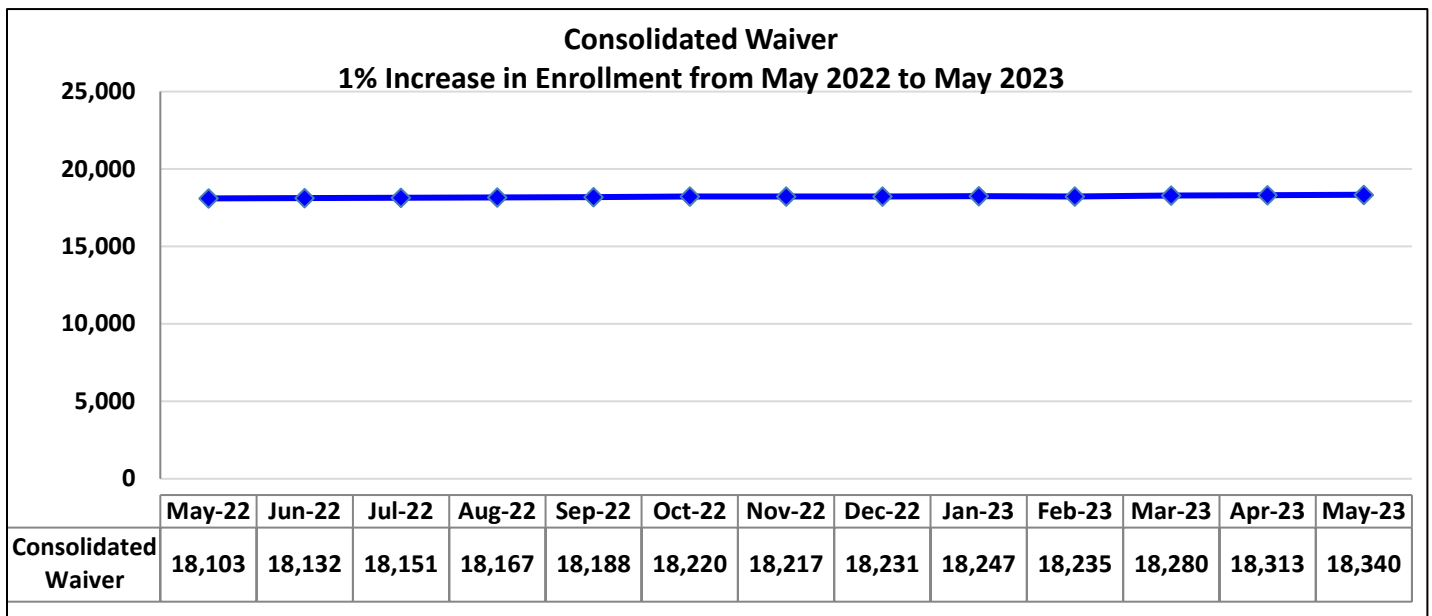
Unduplicated count of recipients which had claims in the month requested. LIFE is a managed care program and provides a comprehensive all-inclusive package of services for Pennsylvanians age 55 or older who meet the level of care needs for a Skilled Nursing Facility or a Special Rehabilitation Facility to enable them to maintain independence in their homes for as long as possible. Be age 55 or older, meet NFCE or a special rehabilitation facility, reside in an area served by a LIFE provider and be able to be safely served in the community as determined by a LIFE provider.



**\*Preliminary Number – will be updated as additional data becomes available**

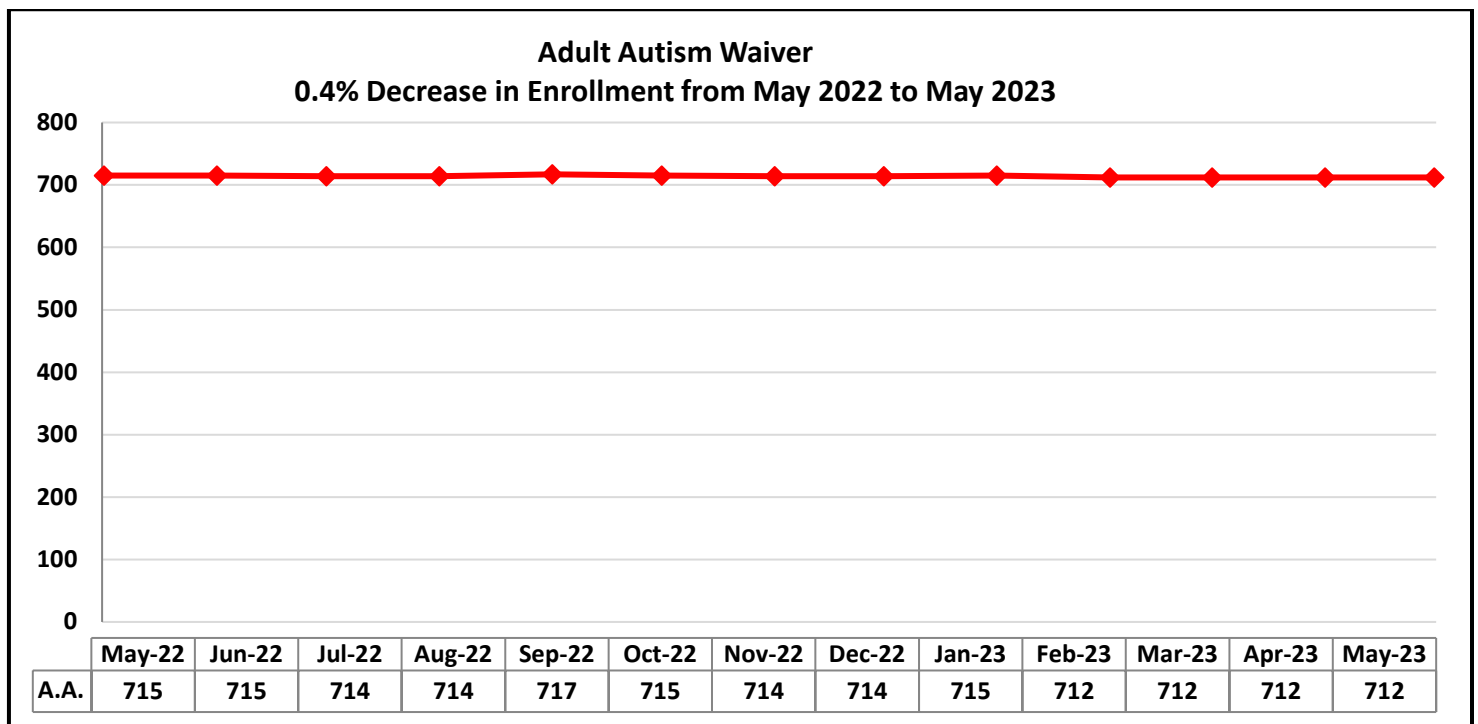
**In January 2020, all counties were moved into CHC**

CHC includes individuals who are 21 years of age or older and dually eligible for Medicare and Medicaid, and Individuals who are 21 years of age or older and eligible for Medicaid (LTSS) because they need the level of care provided by a nursing facility.



Source: DHS Enterprise Data Warehouse

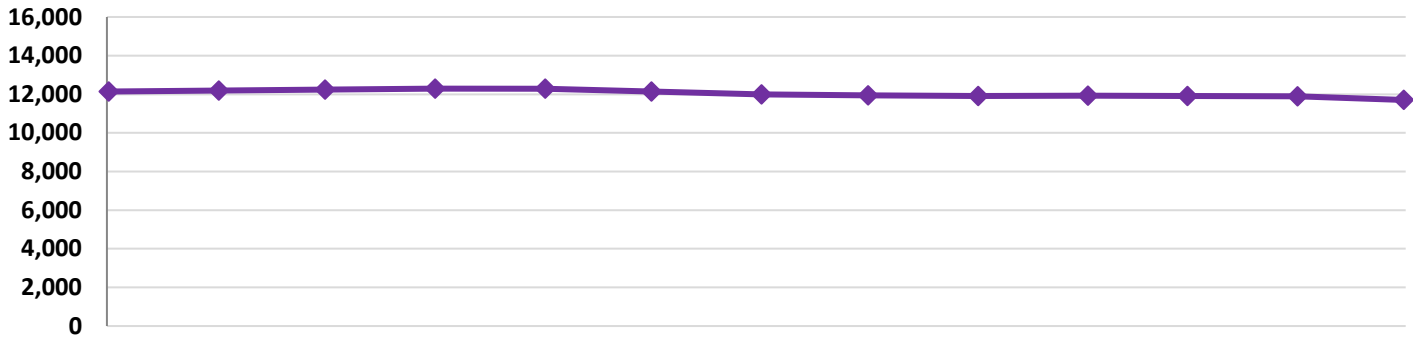
Provides home and community services, including supports coordination and environmental accessibility adaptations, for individuals with intellectual disabilities who require an intermediate care facility level of care.



Source: DHS Enterprise Data Warehouse

Provides home and community services to persons, age 21 and over, with autism spectrum disorder to help them participate in their communities.

**Person/Family Directed Support Waiver**  
**3.6% Decrease in Enrollment from May 2022 to May 2023**

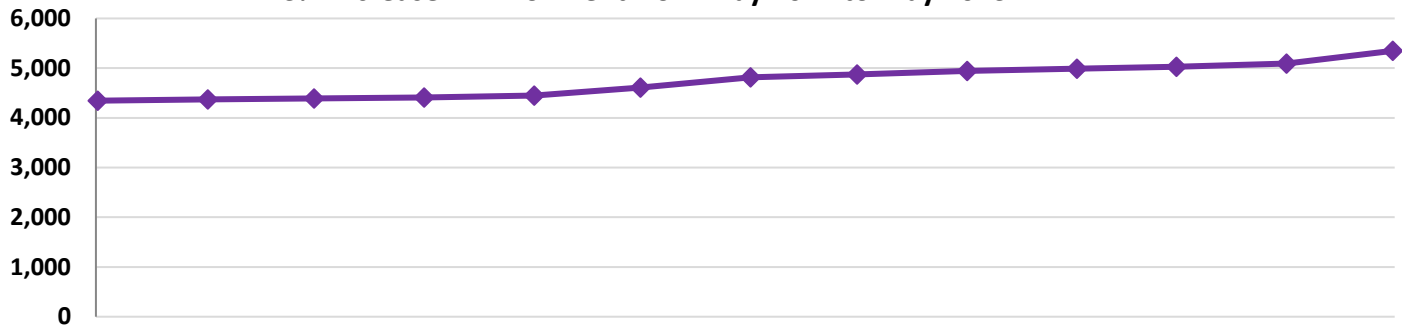


	May-22	Jun-22	Jul-22	Aug-22	Sep-22	Oct-22	Nov-22	Dec-22	Jan-23	Feb-23	Mar-23	Apr-23	May-23
P/FDS	12,145	12,192	12,237	12,283	12,285	12,141	11,986	11,941	11,910	11,926	11,910	11,892	11,704

Source: DHS Enterprise Data Warehouse

Provides a limited array of services and supports, such as therapy and nursing and personal support, to individuals with intellectual disabilities who require an intermediate care facility level of care. Aimed primarily at those residing in their homes or with family members.

**Community Living Waiver**  
**23% Increase in Enrollment from May 2022 to May 2023**



	May-22	Jun-22	Jul-22	Aug-22	Sep-22	Oct-22	Nov-22	Dec-22	Jan-23	Feb-23	Mar-23	Apr-23	May-23
Community Living	4,346	4,373	4,391	4,409	4,452	4,609	4,817	4,874	4,946	4,987	5,030	5,091	5,349

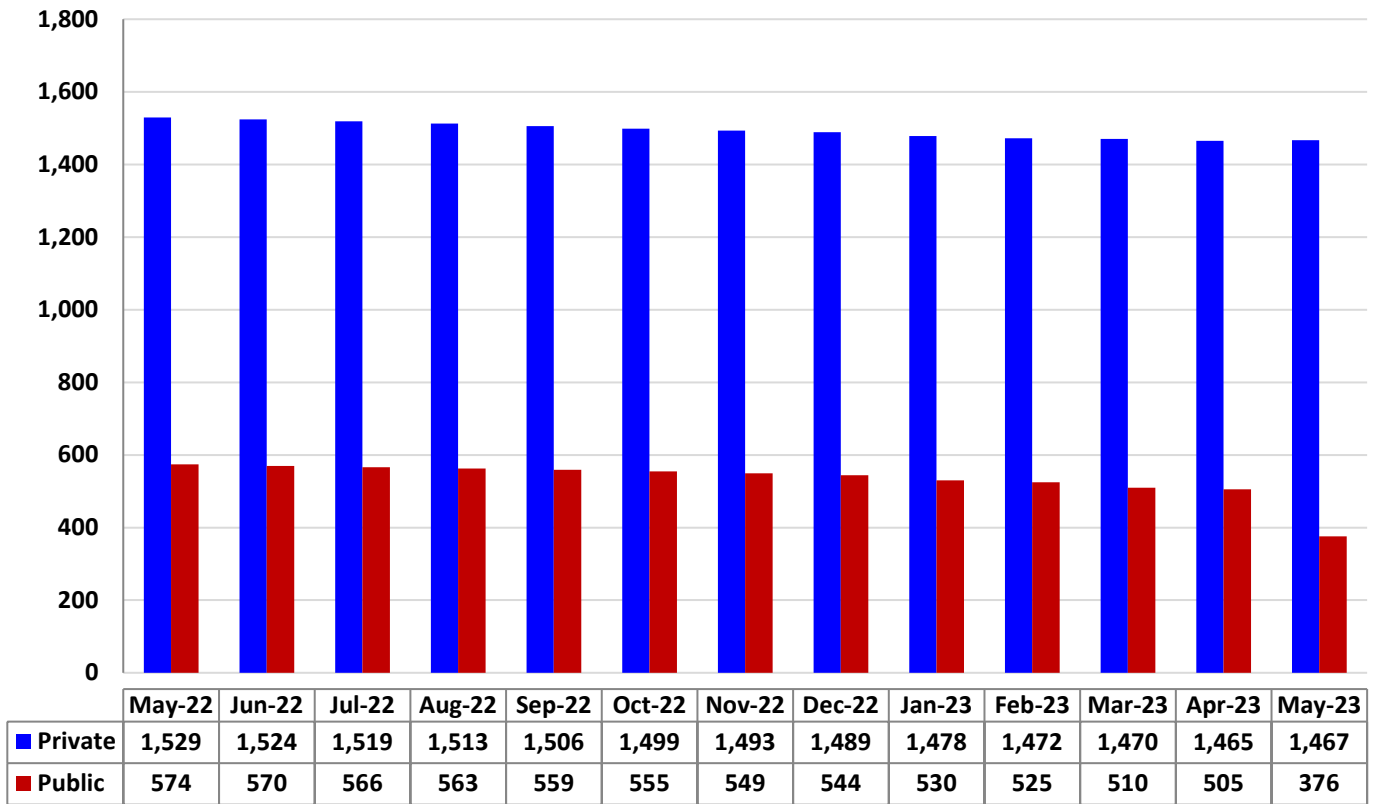
Source: DHS Enterprise Data Warehouse

The Community Living Waiver is a new waiver that became effective in January 2018. It will support individuals to live more independently in their homes and communities through the provision of a variety of services that promote community living, employment, communication, self-direction, choice and control.

**Residents in Intermediate Care Facilities for Persons with Intellectual Disabilities  
(Last Day of Month)**

**Private ICFs/ID: 4% Decrease in Enrollment from May 2022 to May 2023**

**Public ICFs/ID: 34% Decrease in Enrollment from May 2022 to May 2023**



Source: DHS Enterprise Data Warehouse and Mapper/FACT system

**OTHER METRICS**

**Third Party Liability**

	Previous Month	Current Month	FYTD
Recoveries (Casualty, Estate, Health Insurance and HMS)	\$16,895,369 (July 2022)	\$12,198,592 (August 2022)	\$29,093,964
Cost Avoidance (HIPP and Health Insurance)	\$15,770,304 (July 2022)	\$17,202,120 (August 2022)	\$32,972,423

Data Source: TPL Financial Accounting System

**Bureau of Program Integrity**

	Current Month	FYTD
Provider Review Overpayment Recoveries	\$574,999 (August 2022)	\$1,310,983
Recipient Restriction Cost Avoidance*	\$869,400 (August 2022)	\$1,777,500

Data Source: DHS Executive Dashboard