

Long-term Care SubMAAC Updates

December 13, 2016

OLTL Updates Agenda

- Application Processing Updates
- Aging Waiver Enrollment Data Update
- In-Person Enrollment Assistance Update
- Independent Enrollment Broker Draft RFP
- CHC Procurement Updates

Application Process Update

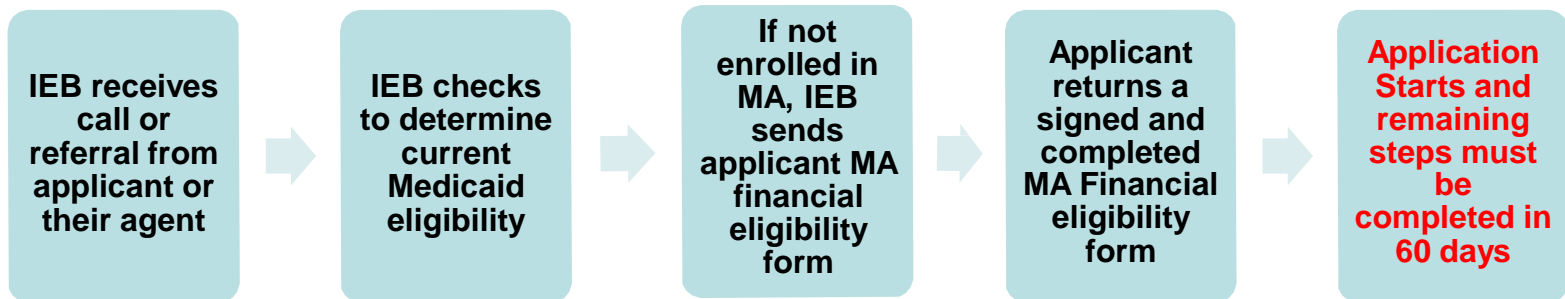
Data Description	Volumes from April 1, 2016 to November 30, 2016
New Waiver Applications sent and requiring the PA600L	15,204 – applications where the PA600L was sent.
New Waiver Applications requiring the PA600L and not returned by Applicant	10,460 (69%) – Total of which 8,370 are Aging Waiver (80% of Total)
Percentage of individuals who started an application process by calling Maximus and subsequently filing PA600L	9,184 applications were started by individuals calling Maximus of which 38% (3,478) were returned.
Percentage of individuals who started an application process through the AAA and subsequently filing a PA600L	2,418 applications were originated by the Area Agencies on Aging of which 24% (574) were returned.

Application Process Update

Data Description	Volumes from April 1, 2016 to November 30, 2016
Percentage of waiver applications denied at 30 days	Of the 15,204 applications with PA600L sent, 11,728 were denied. Of that volume, 1,763 or 15% were denied at 30 days.
Total Number of Denials Sent	11,728
Reasons for Denials by Percentage	PA600L Not Received – 8,795 or 75% LCD Not Received after PA600L Received – 1,506 or 13% Voluntary Withdrawal – 327 or 1% Other – 1,100 or 9%
Average Length of Time between Application and Eligibility Determination.	46.2 Days – All Waivers 41.5 Days – Aging Waiver

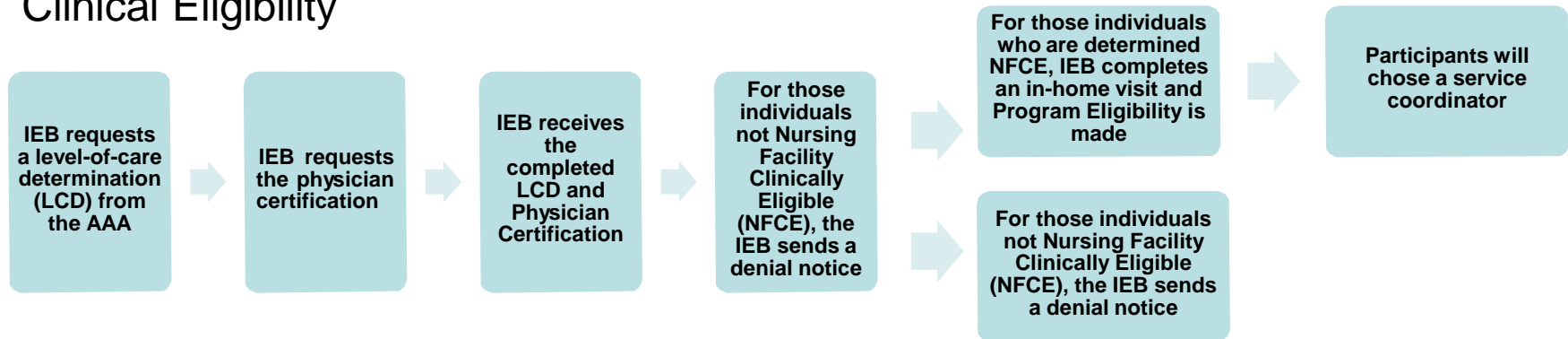
Steps in the Enrollment Process

Prior to Application

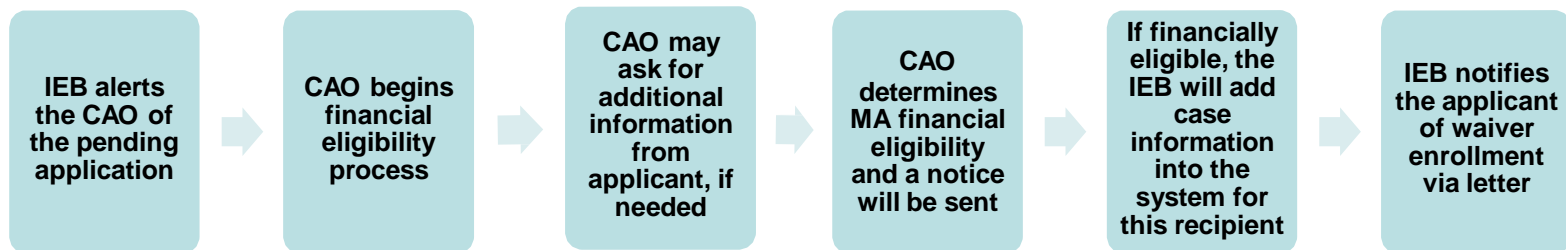


Steps in the Enrollment Process

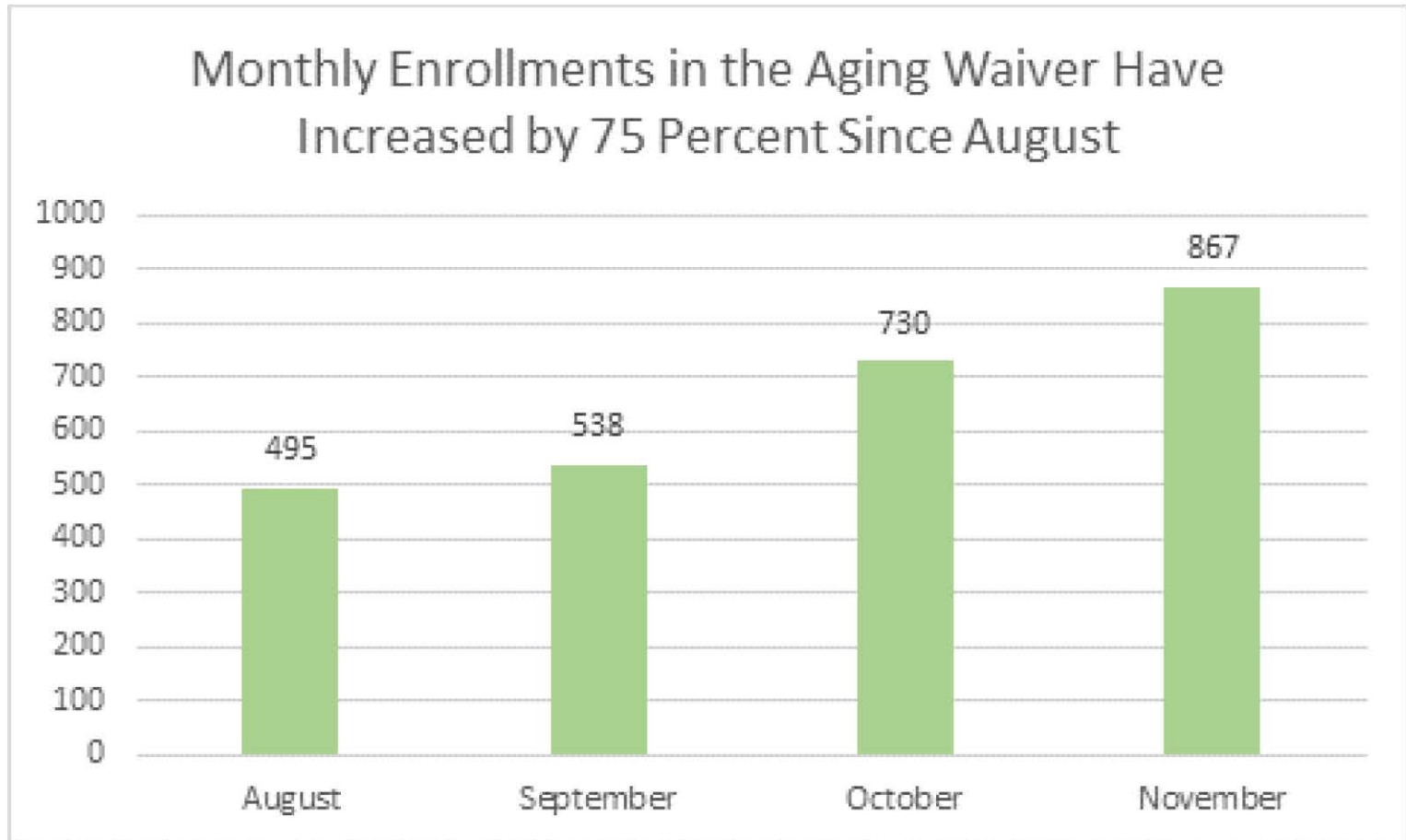
Clinical Eligibility



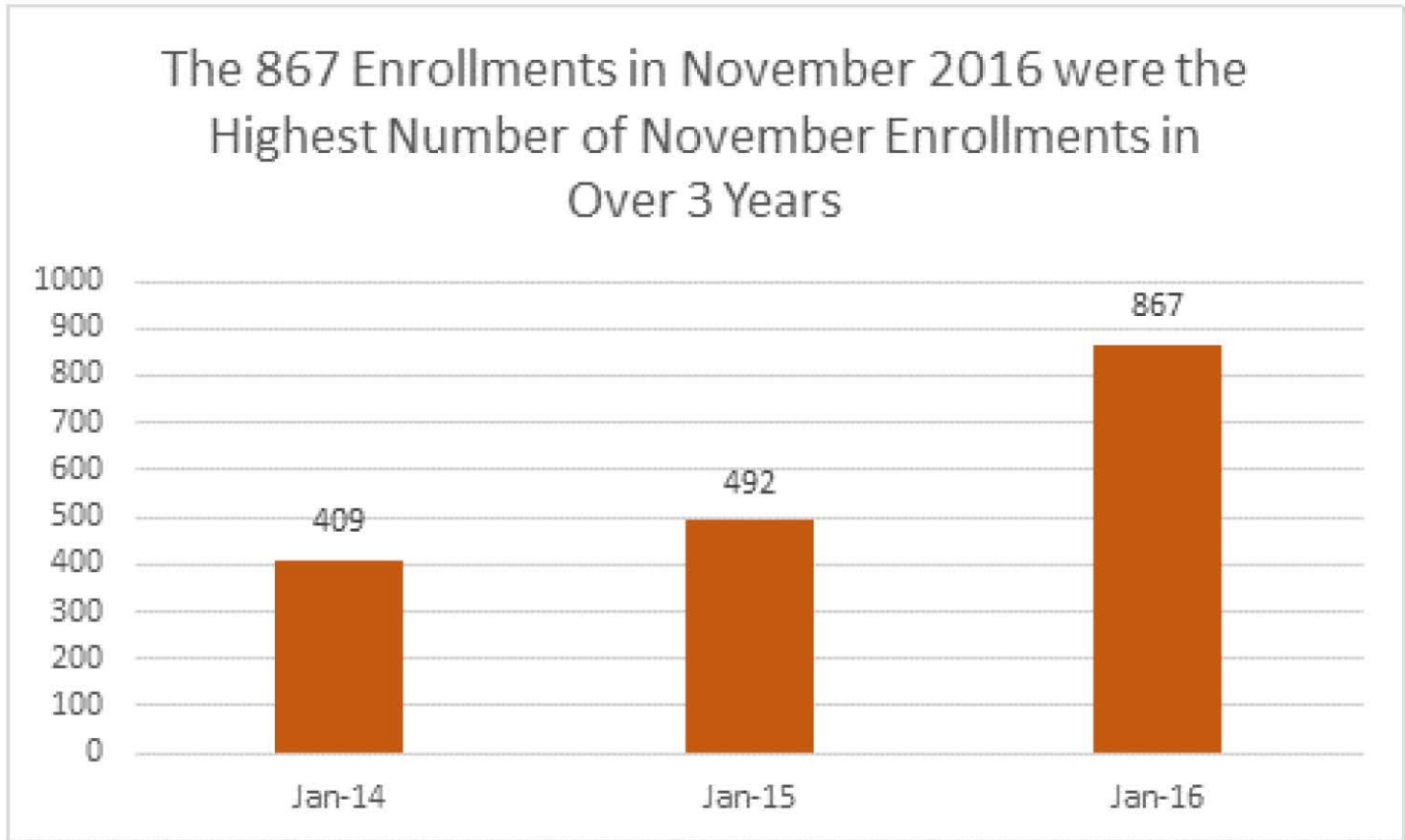
Financial Eligibility



▶ Aging Waiver Enrollment

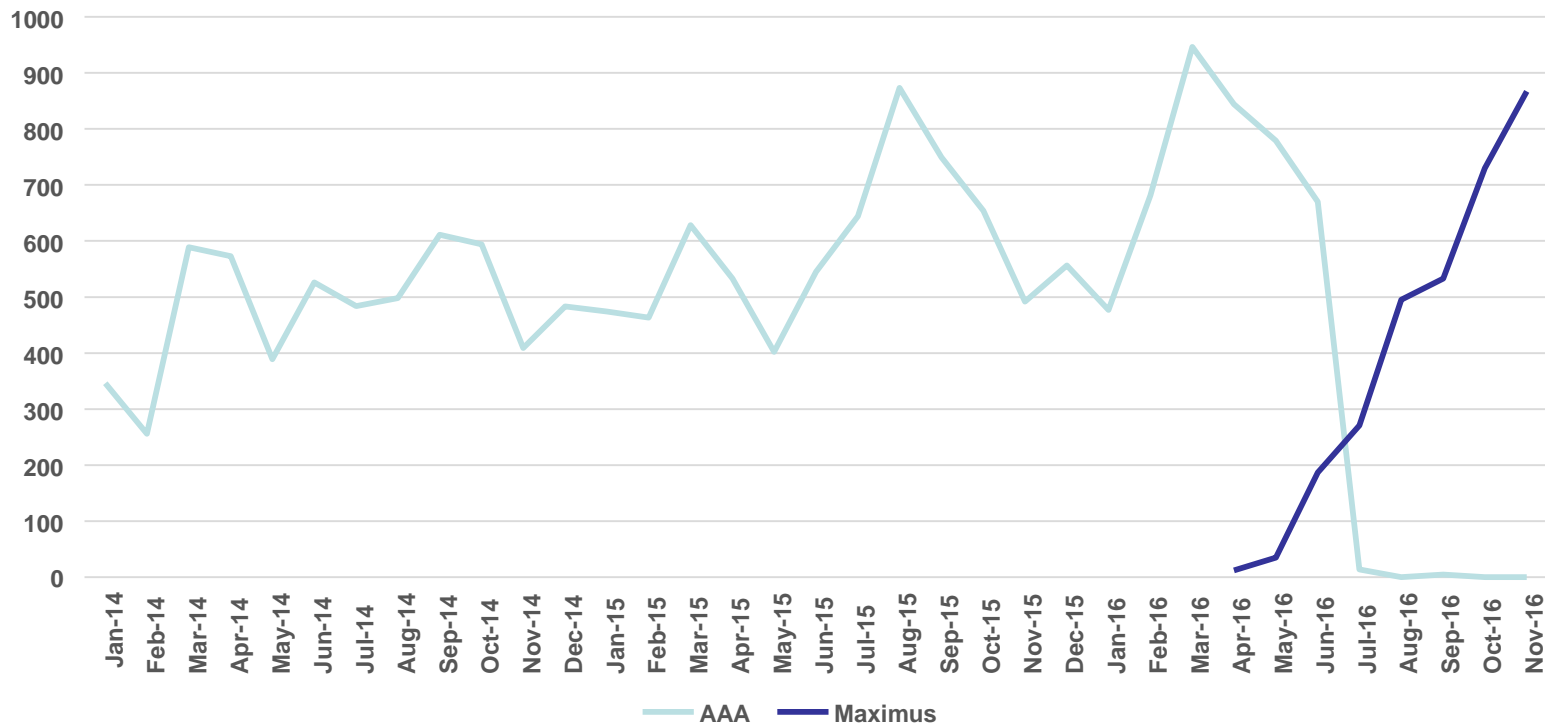


▶ Aging Waiver Enrollment



Aging Waiver Enrollment

Aging Waiver Enrollments Since April, 2016 by Enrolling agent

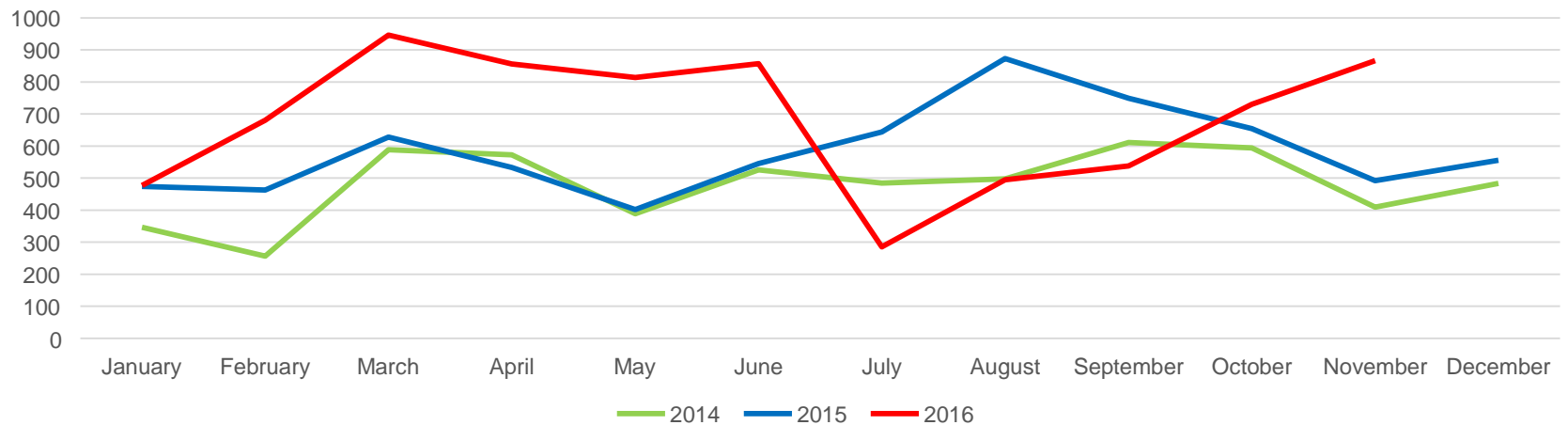


Aging Waiver Enrollment

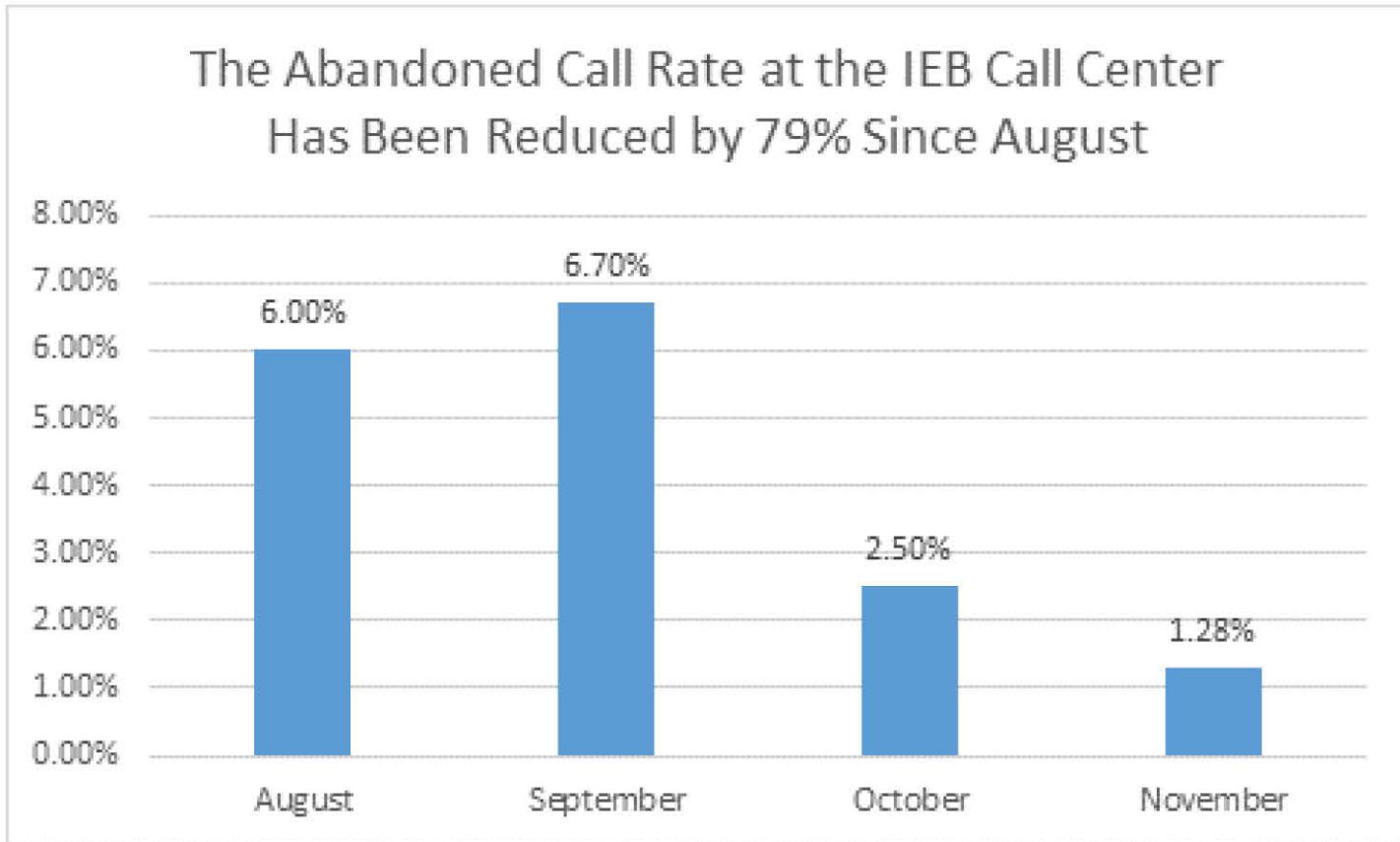
Aging Waiver Enrollment Volumes

Month	2014	2015	2016
January	346	474	477
February	256	463	681
March	589	628	946
April	573	533	856
May	389	402	814
June	526	545	857
July	484	644	285
August	498	873	495
September	611	749	538
October	594	654	730
November	409	492	867
December	483	556	

Aging Waiver Enrollments by Year



IEB Call Center Performance



In-Person Visit

- ADRC/LINK Phone number shared via call center script starting 12/6/2016
- In-Person Visit being Evaluated as Part of the Emergency Procurement
- Outstanding Question about the Level and Frequency of the In-Person Visit

IEB Draft RFP

- Total Comments received, 1522 from 41 Commentators
- Total External Comments, 1185 from 36 Commentators
- Total Internal Comments – PDA/LIFE Program, etc. 337 from 5 Commentators
- Program requirements, terms and conditions, service level objectives and penalties, and interactions with CHC were comment comments
- Working toward a January, 2017 release

CHC Updates

- Selected Offerors Announced on August 30, 2016
 - PA Health and Wellness
 - UPMC For You
 - Amerihealth Caritas
- Ten debriefs requested and Ten have been completed
- Four protests were found in favor of DHS
- Protesting entities have 15 days to submit an appeal to Commonwealth Court
- Continue to work toward a 7/1/2017 effective date

Questions

