



OLTL Updates

LTSS Subcommittee Meeting

February 9, 2021

Jamie Buchenauer
Deputy Secretary
Office of Long-Term Living

Agenda

- COVID-19 Updates
- Enrollment Updates
- Monitoring Report Updates
 - Person-Centered Service Plan (PCSP) Changes

COVID-19 Updates

COVID-19 Updates

- 1915(c) Waiver Appendix K Transition Plan
 - OLTL issued updated guidance documents outlining changes to Appendix K for the CHC 1915(c) Waiver on January 5, 2021.
 - The most significant revision to the Appendix K guidance is the flexibility for the remote provision of Adult Daily Living Services.
 - OLTL is in the process of applying for an extension to the Appendix K provisions based on recent federal guidance.

COVID-19 Updates

- Vaccine Strategy

- Direct Care Workers

- Direct Care Workers serving Home and Community-Based Services

- Participants are eligible to receive a vaccine under Phase 1A.

- Any individuals providing services through the participant-directed model can obtain a letter to verify employment from PPL, if needed.

- Unpaid Family Caregivers

- Eligible under Phase 1A. The Department developed a letter available on the COVID-19 website for unpaid caregivers if asked for verification.

COVID-19 Updates

- Vaccine Strategy

- Participants

- Many Participants served in OLTL home and community-based waivers are now eligible to receive the vaccine under Phase 1A.
 - OLTL has developed guidance for CHC-MCOs to assist participants in scheduling and/or receiving the vaccine.

- Regional Response Health Collaborative Program (RRHC)

Program Transition

- Federal funding for the RRHC program ended on December 30, 2020.
- The Wolf Administration has prioritized the allocation of limited funds to continue providing facilities with support during COVID-19 facility outbreaks.
- This state-funded effort will leverage the expertise of the health systems through the Regional Congregate Care Assistance Teams (RCAT), a new, more limited, version of the RRHC.
- Starting December 31, 2020 through February 28, 2021, RCAT will provide COVID-19 outbreak support to facilities.

- Regional Response Health Collaborative Program (RRHC)
Program Transition (continued)
 - Continued support that will be offered to the RCAT-eligible facilities are:
 - Call Centers currently utilized under the RRHC program will remain available.
 - PPE will be provided with existing and new vendors.
 - Staffing assistance will continue to be provided by existing and new contracted agencies, as well as the PA National Guard, but will be more limited.
 - Testing assistance is available as resources permit through the Pennsylvania Department of Health's vendors. Facilities experiencing a current outbreak or support from a RRHC or DOH vendor will be enrolled in testing support first, and then the program will expand based on availability of resources.
 - Tomorrow's Healthcare portal will still be accessible; webinars will be scheduled as needed.

Enrollment Updates

Average Number of Days in Enrollment Status

| Status | 7/31/20 | 8/26/20 | 9/22/20 | 10/30/2020 | 11/30/2020 | 12/30/2020 | 1/28/2021 | Description |
|-------------------------|---------|---------|---------|------------|------------|------------|-----------|--|
| READY_ASSESSMENT | 11 | 12 | 12 | 13 | 18 | 10 | 8 | Referral Received, outreaching to Applicant/Representative to schedule Visit |
| SCHEDULED | 3 | 4 | 5 | 4 | 8 | 5 | 4 | In Home Visit has been scheduled |
| ASSESSMENT_INPROCESSES | 1 | 1 | 1 | 1 | 4 | 1 | 1 | In Home Visit completed and under review |
| MA_PA_600_REVIEW | 4 | 4 | 5 | 5 | 10 | 7 | 5 | PA 600: Received to be entered in COMPASS |
| PC & FED Pending | 4 | 5 | 6 | 4 | 9 | 5 | 4 | PC and FED Requested |
| PC Pending/FED Received | 32 | 33 | 35 | 36 | 37 | 34 | 36 | PC Pending/FED Received |
| PC Received/FED Pending | 8 | 6 | 7 | 5 | 11 | 7 | 5 | PC Received/FED Pending |
| APP_REVIEW | 2 | 2 | 2 | 1 | 5 | 1 | 1 | Medical Director Review Pending |
| OLTL_READY | 39 | 48 | 42 | 33 | 27 | 14 | 12 | Eligibility under review by OLTL |
| READY_TRANSITION | 77 | 76 | 61 | 59 | 65 | 65 | 70 | Functionally eligible, pending nursing facility discharge |
| APPROVED | 16 | 18 | 17 | 16 | 21 | 17 | 15 | Functionally Eligible, 1768 sent to CAO |
| 1768_DENIAL | 3 | 3 | 9 | 3 | 8 | 2 | 2 | Functionally ineligible, notice pending |
| FINANCIAL_APPROVAL | 8 | 5 | 3 | 2 | 6 | 7 | 6 | Financial Approval Received, enrollment in process of being finalized |
| MMS_READY | 21 | 23 | 10 | 12 | 28 | 6 | 14 | Pending acceptance by OBRA or Act 150 Service Coordinator |
| FINANCIAL_DENIAL | 0 | 1 | 0 | 3 | 4 | 1 | 1 | Financial Denial Received, application in process of completion |

Current IEB Report – All Waivers

| | 2018QTR2 | 2018QTR3 | 2018QTR4 | 2019QTR1 | 2019QTR2 | 2019QTR3 | 2019QTR4 | 2020QTR1 | 2020QTR2 | 2020QTR3 | 2020 QTR4 |
|--------------------------------|----------|----------|----------|----------|----------|----------|----------|----------|----------|----------|-----------|
| Grand Total | 25464 | 25505 | 24283 | 25320 | 26335 | 24752 | 34711 | 33402 | 25890 | 26398 | 26213 |
| Complete | 15842 | 15795 | 14703 | 15607 | 16277 | 17347 | 15617 | 21513 | 17820 | 16180 | 18098 |
| Complete in 90 Days | 12252 | 12833 | 12186 | 12068 | 14343 | 13188 | 13027 | 18963 | 15441 | 14918 | 17428 |
| Complete > 90 Days With Excuse | 351 | 350 | 400 | 344 | 435 | 484 | 483 | 1126 | 536 | 648 | 408 |
| Compliance Percentage | 80% | 83% | 86% | 80% | 91% | 79% | 87% | 93% | 90% | 96% | 99% |
| Average Days To Complete | 59 | 56 | 52 | 60 | 52 | 56 | 56 | 52 | 57 | 45 | 41 |

1. All unduplicated applications in process this quarter
2. Total unduplicated applications completed this quarter
3. Total unduplicated applications completed during the quarter in 90 days
4. Total unduplicated applications completed during the quarter and over 90 days, but with excuse of a delayed enrollment
5. Using the above fields = (row 3 + row 4)/ row 2
6. Average to complete excluding excused applications

Note: Reapplications removed

Current IEB Report

| Over 60 | 2018QTR2 | 2018QTR3 | 2018QTR4 | 2019QTR1 | 2019QTR2 | 2019QTR3 | 2019QTR4 | 2020QTR1 | 2020QTR2 | 2020QTR3 | 2020 QTR4 |
|--------------------------------|----------|----------|----------|----------|----------|----------|----------|----------|----------|----------|-----------|
| Grand Total | 14948 | 15072 | 14140 | 14937 | 15771 | 15134 | 23082 | 20441 | 16309 | 16848 | 16775 |
| Complete | 9303 | 9442 | 8586 | 9323 | 9885 | 10827 | 10267 | 12967 | 11172 | 10282 | 11658 |
| Complete in 90 Days | 7246 | 7604 | 7063 | 7312 | 8804 | 8447 | 8605 | 11421 | 9700 | 9500 | 11233 |
| Complete > 90 Days With Excuse | 234 | 231 | 275 | 221 | 272 | 322 | 336 | 684 | 327 | 392 | 267 |
| Compliance Percentage | 80% | 83% | 85% | 81% | 92% | 75% | 81% | 93% | 90% | 96% | 99% |
| Average Days To Complete | 57 | 56 | 52 | 58 | 50 | 54 | 55 | 52 | 56 | 45 | 40 |

| Under 60 | 2018QTR2 | 2018QTR3 | 2018QTR4 | 2019QTR1 | 2019QTR2 | 2019QTR3 | 2019QTR4 | 2020QTR1 | 2020QTR2 | 2020QTR3 | 2020 QTR4 |
|--------------------------------|----------|----------|----------|----------|----------|----------|----------|----------|----------|----------|-----------|
| Grand Total | 10516 | 10433 | 10143 | 10383 | 10565 | 9597 | 11628 | 12101 | 9580 | 9335 | 9438 |
| Complete | 6539 | 6353 | 6114 | 6279 | 6392 | 6499 | 5350 | 7951 | 6648 | 5898 | 6439 |
| Complete in 90 Days | 5006 | 5229 | 4948 | 4751 | 5539 | 4720 | 4422 | 7006 | 5741 | 5418 | 6195 |
| Complete > 90 Days With Excuse | 117 | 119 | 130 | 123 | 163 | 162 | 147 | 418 | 209 | 256 | 141 |
| Compliance Percentage | 83% | 78% | 84% | 84% | 89% | 75% | 85% | 93% | 90% | 96% | 98% |
| Average Days To Complete | 62 | 55 | 70 | 63 | 55 | 60 | 59 | 53 | 57 | 47 | 41 |

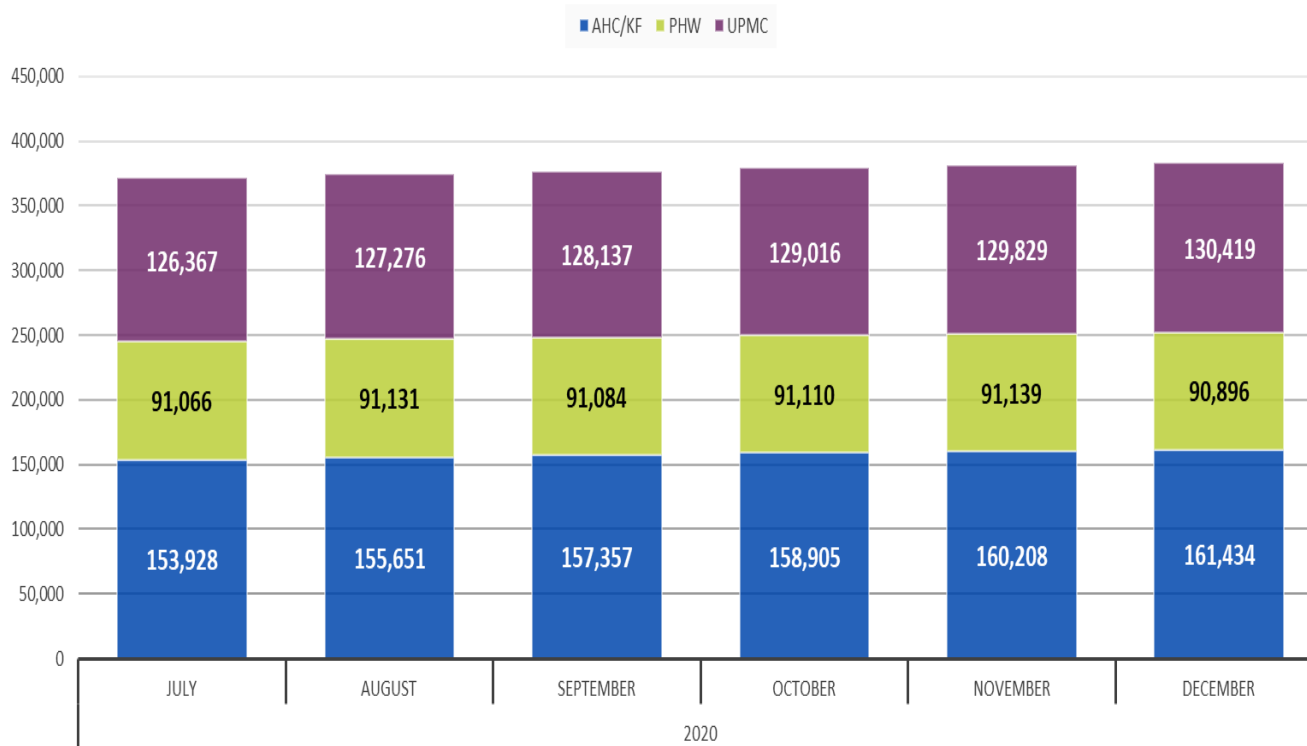
1. All unduplicated applications in process this quarter
2. Total unduplicated applications completed this quarter
3. Total unduplicated applications completed during the quarter in 90 days
4. Total unduplicated applications completed during the quarter and over 90 days, but with excuse of a delayed enrollment
5. Using the above fields = (row 3 + row 4)/ row 2
6. Average to complete excluding excused applications

Note: Reapplications removed

CHC Monthly Enrollment – December 2020

CHC Statewide Enrollments Trends by MCO

Data Period: Dec 2020



Total CHC Enrollment

382,749

Total CHC HCBS Enrollment

100,124

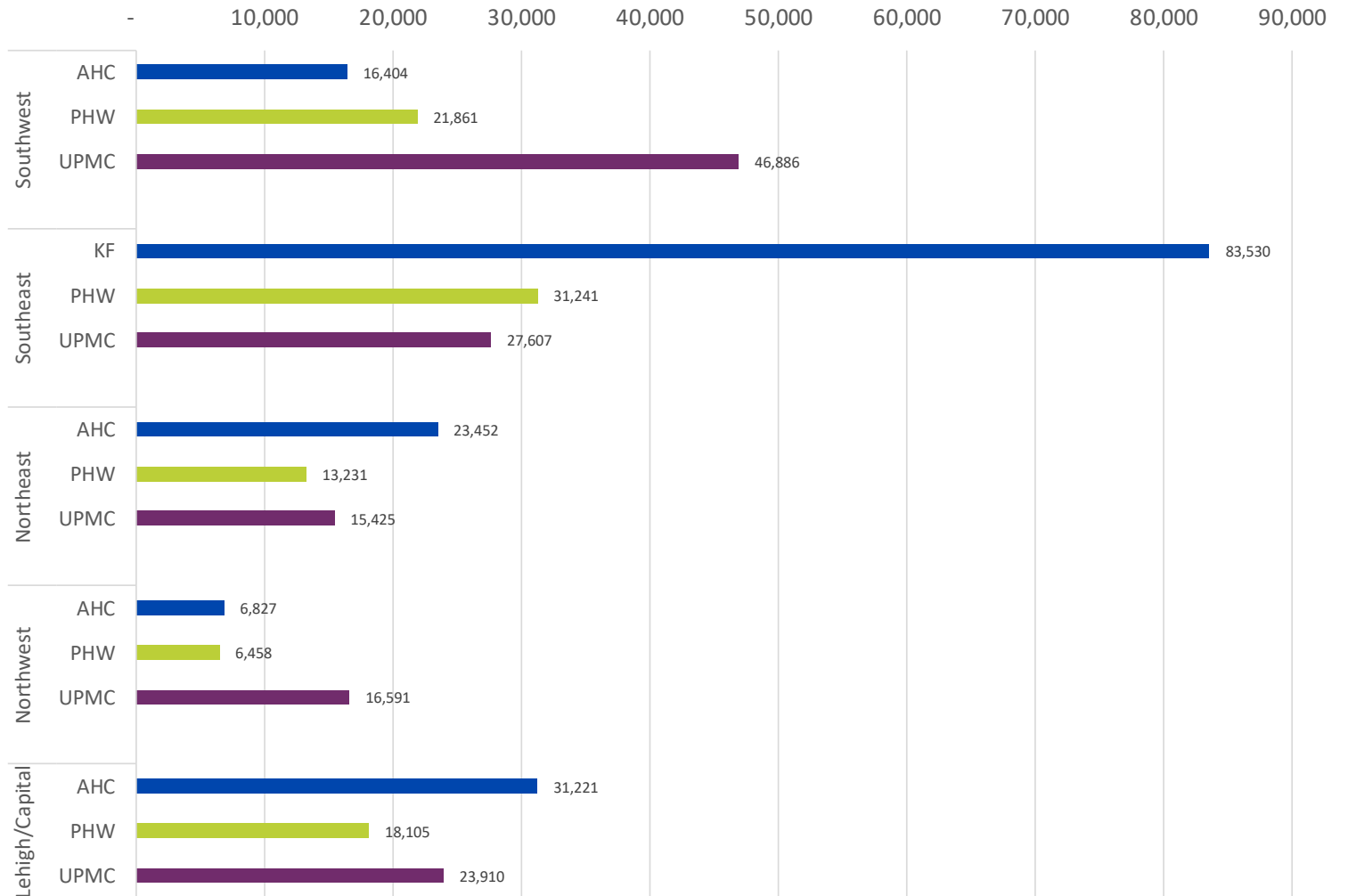
Total CHC LTC Enrollment

43,045



CHC Monthly Enrollment By Zone – December 2020

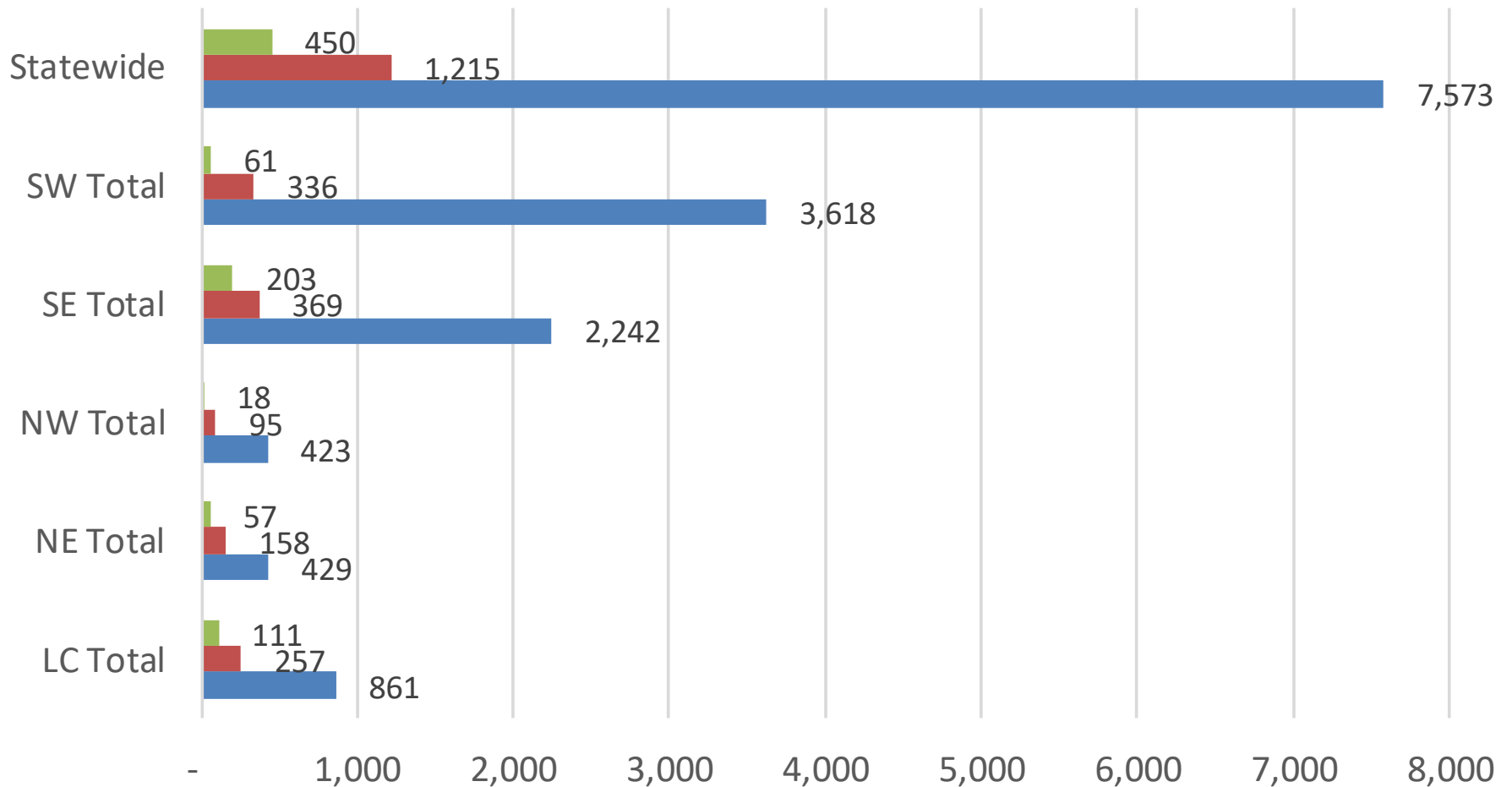
CHC Monthly Enrollment by Zone and MCO



OLTL Program Enrollment – December 2020

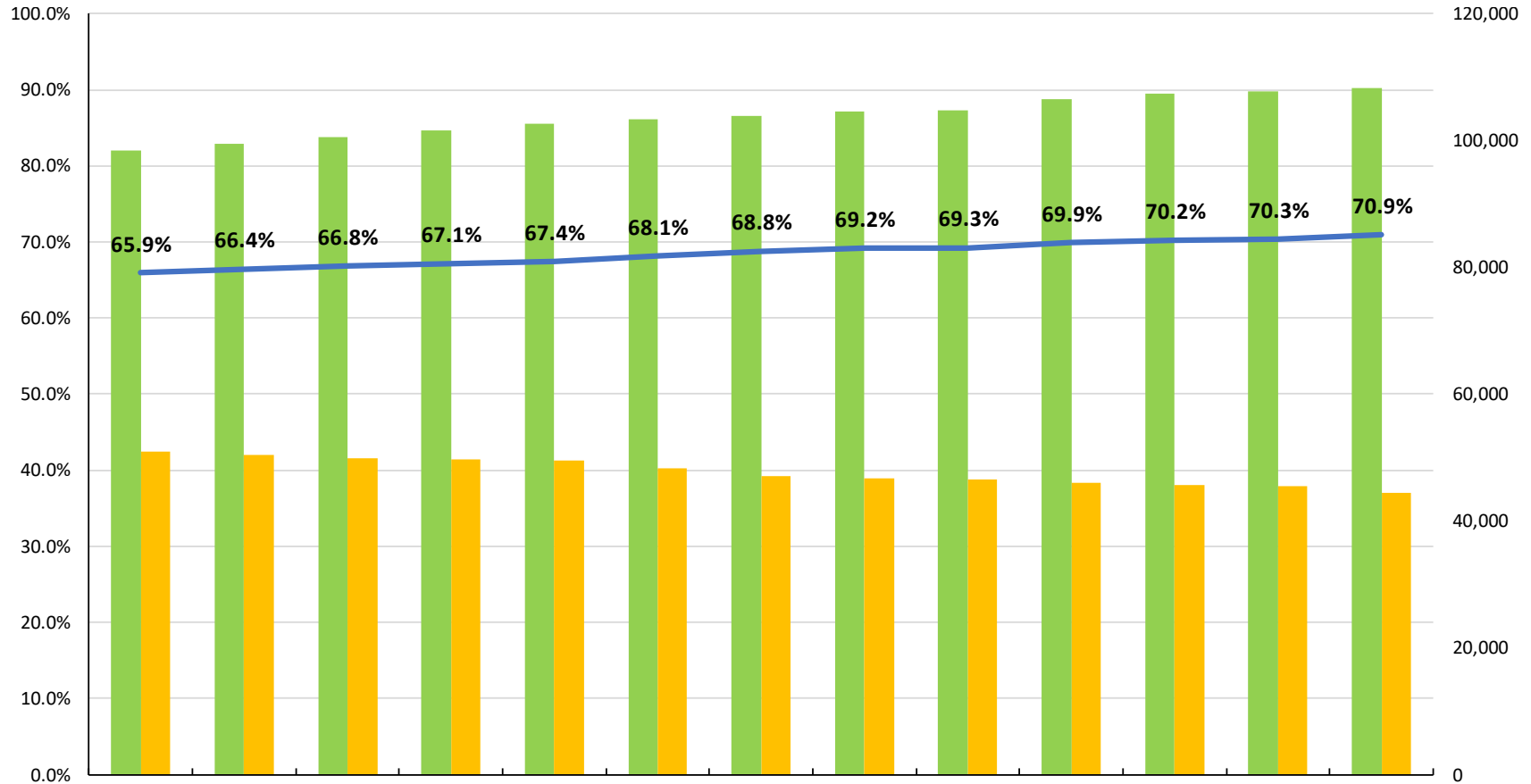
OLTL Program Enrollment

OBRA Waiver Act 150 LIFE



OLTL Enrollment Data – December 2020

Statewide LTSS Population and HCBS Percentage



| | | | | | | | | | | | | | |
|-------------------|--------|--------|---------|---------|---------|---------|---------|---------|---------|---------|---------|---------|---------|
| HCBS Participants | 98,458 | 99,485 | 100,497 | 101,586 | 102,608 | 103,311 | 103,854 | 104,638 | 104,778 | 106,448 | 107,419 | 107,786 | 108,351 |
| LTC Participants | 50,960 | 50,313 | 49,865 | 49,764 | 49,551 | 48,334 | 47,095 | 46,619 | 46,502 | 45,928 | 45,649 | 45,514 | 44,480 |
| Statewide HCBS | 65.9% | 66.4% | 66.8% | 67.1% | 67.4% | 68.1% | 68.8% | 69.2% | 69.3% | 69.9% | 70.2% | 70.3% | 70.9% |

Data Period: Dec 2020

*This chart contains CHC, OBRA, Act150 and LIFE program participants.



Monitoring Report Update: Person-Centered Service Plan (PCSP) Changes

PCSP Changes

Amerihealth Caritas/Keystone First (AHC/KF) – Number of active PCSPs

| Zone | Q1 2020 | Q2 2020 | Q3 2020 |
|----------------|---------|---------|---------|
| Southwest | 5,418 | 5,817 | 5,973 |
| Southeast | 101,371 | 106,247 | 109,566 |
| Lehigh/Capital | 14,133 | 15,415 | 16,948 |
| Northwest | 3,413 | 3,651 | 3,754 |
| Northeast | 9,274 | 10,217 | 11,106 |

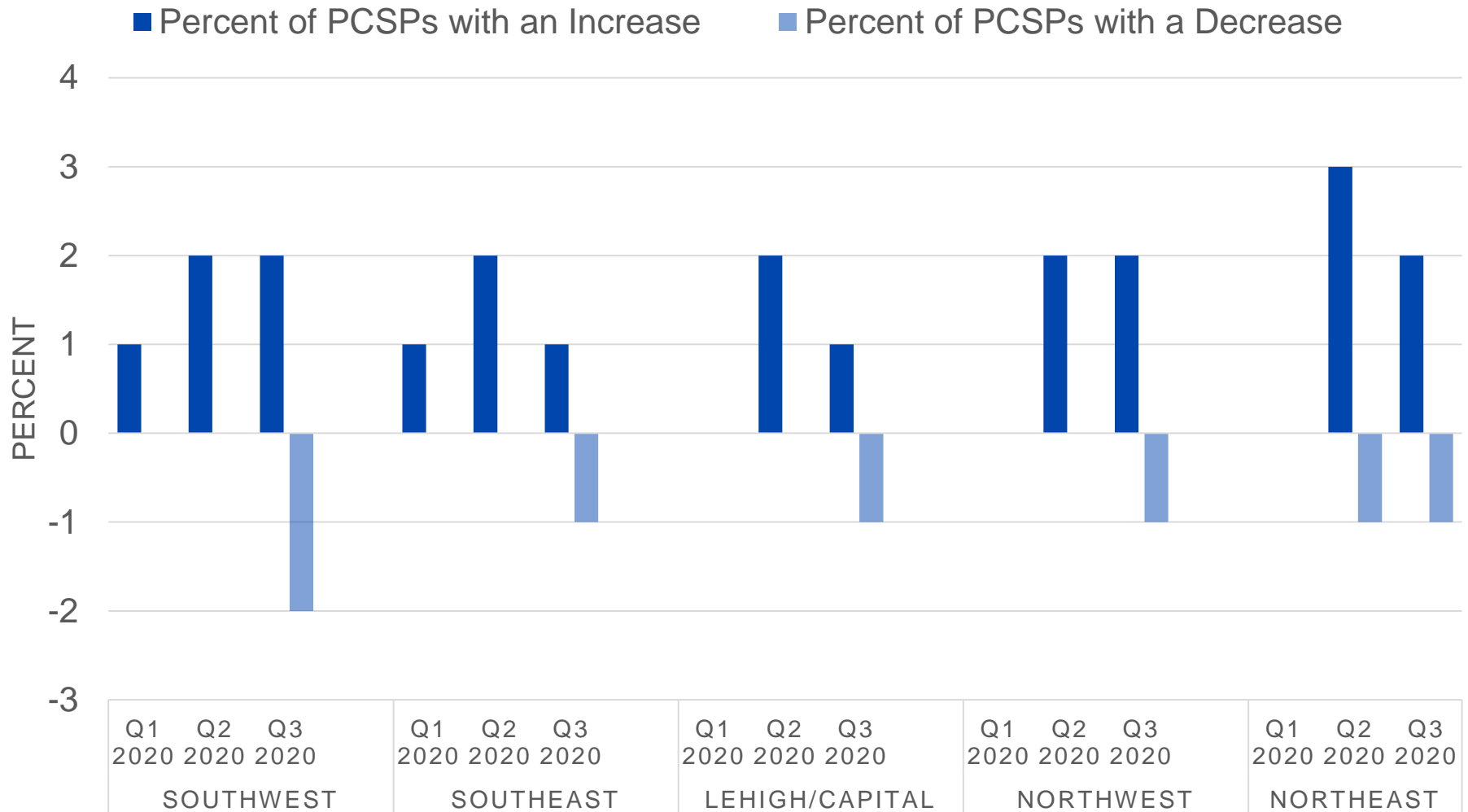
AHC/KF - Number of PCSPs with an increase or decrease

| Zone | Q1 2020 | | Q2 2020 | | Q3 2020 | |
|----------------|----------|----------|----------|----------|----------|----------|
| | Increase | Decrease | Increase | Decrease | Increase | Decrease |
| Southwest | 42 | 16 | 97 | ** | 120 | 94 |
| Southeast | 825 | 133 | 1950 | 132 | 1289 | 578 |
| Lehigh/Capital | 26 | 12 | 291 | 27 | 171 | 97 |
| Northwest | ** | ** | 78 | ** | 59 | 33 |
| Northeast | 28 | ** | 332 | 66 | 270 | 107 |

**denotes counts less than 10

PCSP Changes

PCSP CHANGES - AHC/KF



PCSP Changes

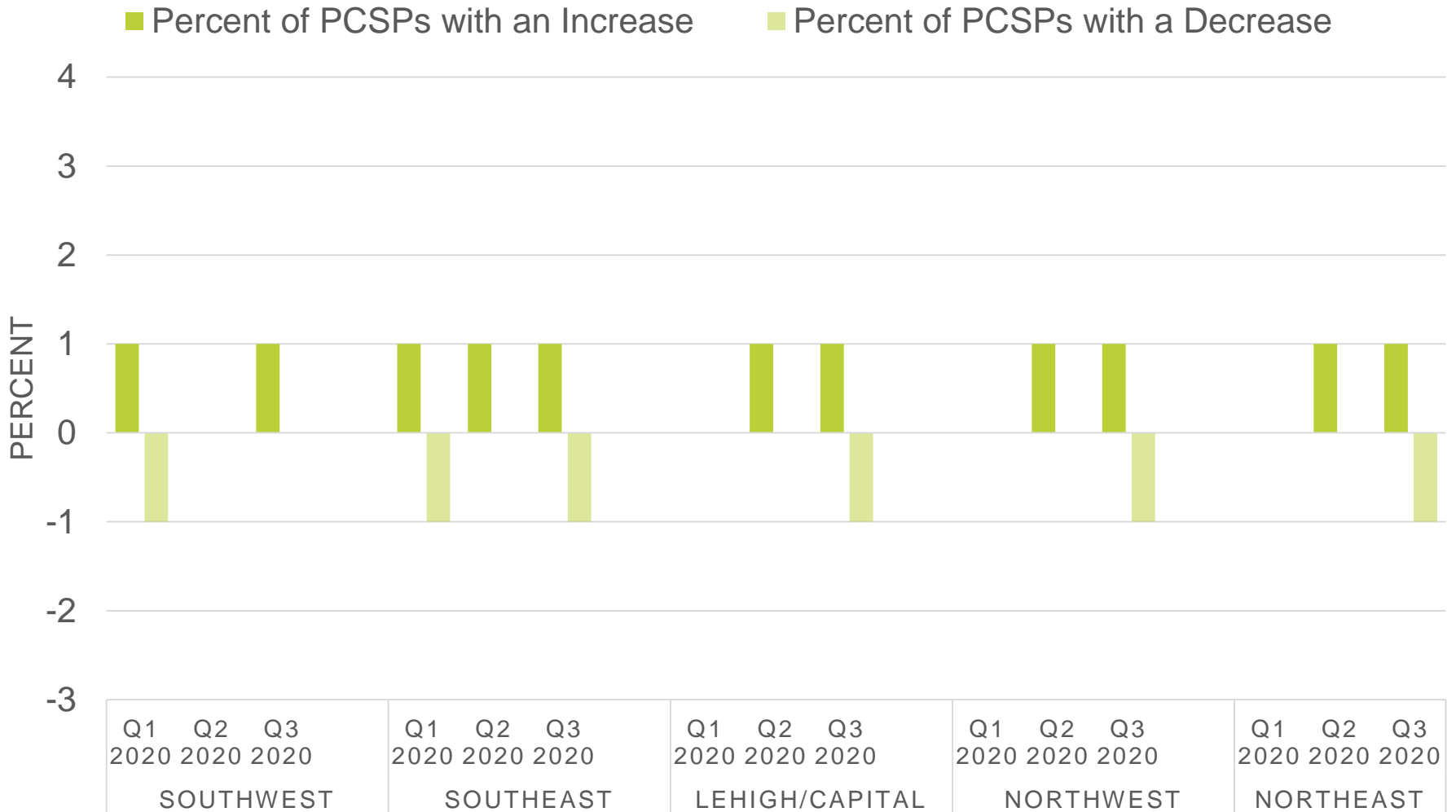
| PA Health & Wellness (PHW) – Number of active PCSPs | | | |
|---|---------|---------|---------|
| Zone | Q1 2020 | Q2 2020 | Q3 2020 |
| Southwest | 10,621 | 10,779 | 10,418 |
| Southeast | 37,585 | 37,694 | 36,750 |
| Lehigh/Capital | 9,087 | 9,380 | 8,648 |
| Northwest | 4,321 | 4,401 | 4,261 |
| Northeast | 5,549 | 5,530 | 5,020 |

| PHW - Number of PCSPs with an increase or decrease | | | | | | |
|--|----------|----------|----------|----------|----------|----------|
| Zone | Q1 2020 | | Q2 2020 | | Q3 2020 | |
| | Increase | Decrease | Increase | Decrease | Increase | Decrease |
| Southwest | 127 | 129 | 51 | 14 | 70 | 47 |
| Southeast | 287 | 265 | 237 | 22 | 233 | 241 |
| Lehigh/Capital | 30 | 0 | 62 | ** | 108 | 90 |
| Northwest | 11 | ** | 25 | 0 | 42 | 29 |
| Northeast | 26 | ** | 36 | ** | 55 | 37 |

**denotes counts less than 10

PCSP Changes

PCSP CHANGES - PHW



PCSP Changes

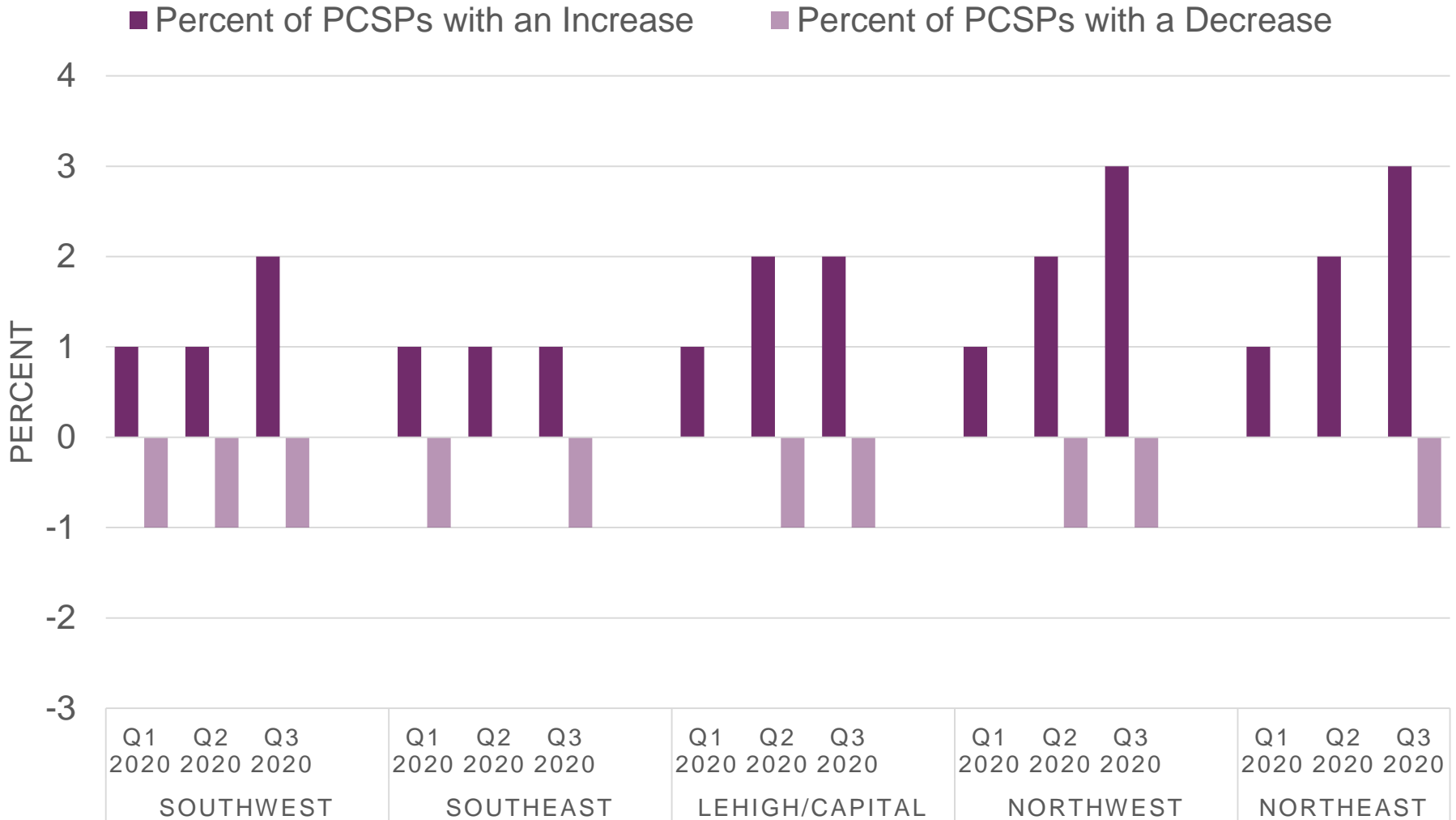
| UPMC – Number of active PCSPs | | | |
|-------------------------------|---------|---------|---------|
| Zone | Q1 2020 | Q2 2020 | Q3 2020 |
| Southwest | 25,791 | 26,982 | 28,193 |
| Southeast | 22,579 | 23,248 | 23,631 |
| Lehigh/Capital | 8,348 | 9,035 | 9,762 |
| Northwest | 6,927 | 7,122 | 7,966 |
| Northeast | 3,804 | 3,889 | 4,149 |

| UPMC - Number of PCSPs with an increase or decrease | | | | | | |
|---|----------|----------|----------|----------|----------|----------|
| Zone | Q1 2020 | | Q2 2020 | | Q3 2020 | |
| | Increase | Decrease | Increase | Decrease | Increase | Decrease |
| Southwest | 366 | 299 | 351 | 144 | 423 | 247 |
| Southeast | 280 | 200 | 173 | 80 | 330 | 166 |
| Lehigh/Capital | 74 | 16 | 148 | 52 | 236 | 121 |
| Northwest | 58 | ** | 140 | 67 | 202 | 106 |
| Northeast | 46 | ** | 61 | 19 | 141 | 58 |

**denotes counts less than 10

PCSP Changes

PCSP CHANGES - UPMC



*Report captures whole percentages. Increases or decreases amounting to less than 1% will show as 0.

Questions?

