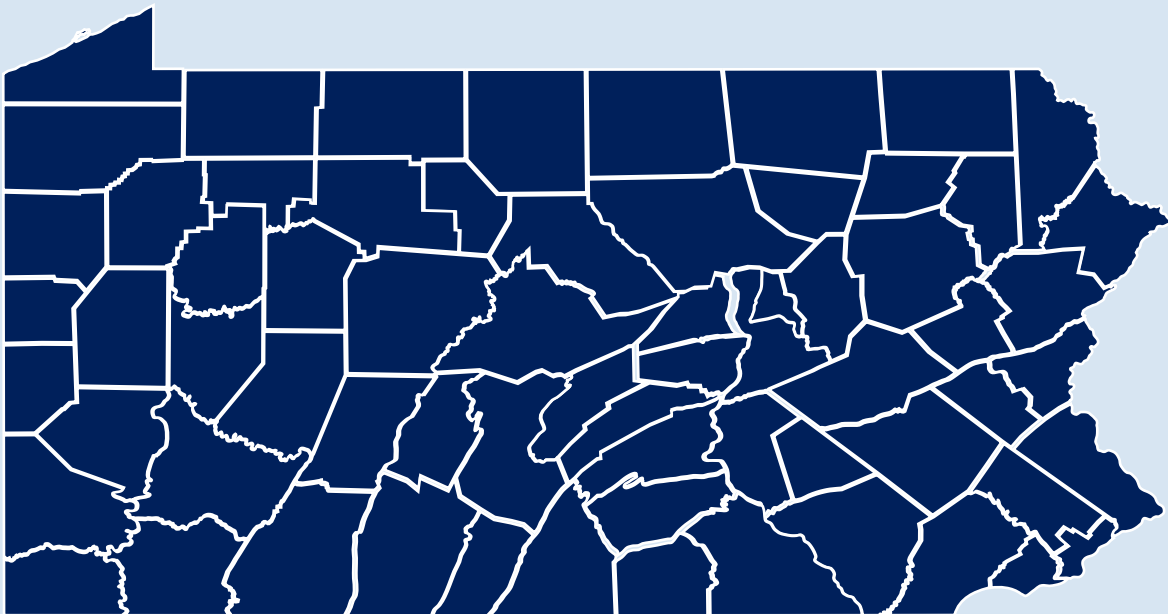




**pennsylvania**

DEPARTMENT OF HUMAN SERVICES



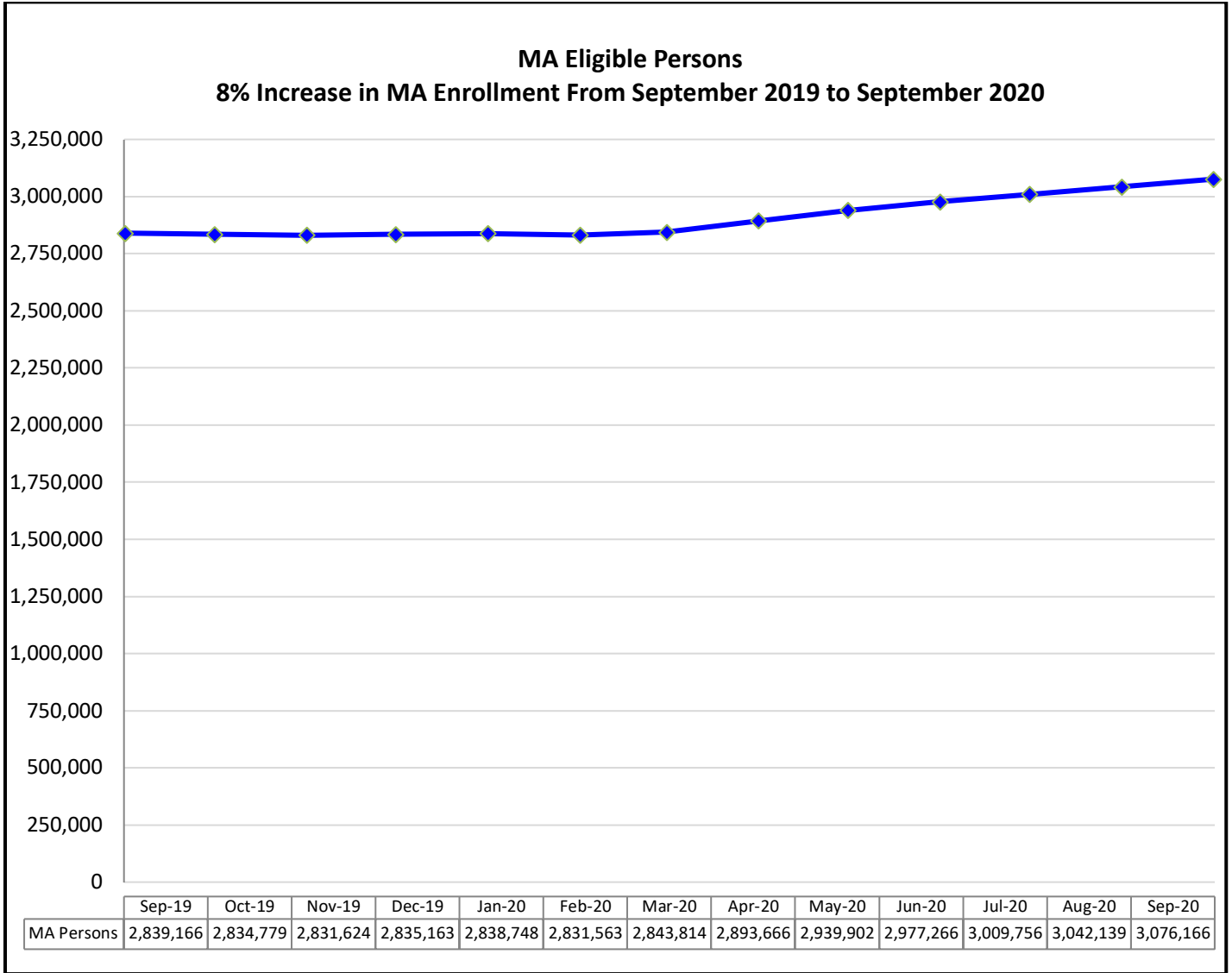
**MONTHLY DATA REPORT**  
SEPTEMBER 2020

# **TABLE OF CONTENTS**

*CTRL+Click on one of the major headings below will link you to that section.*

MEDICAL ASSISTANCE AND OTHER HEALTH CARE SERVICES .....	2
MA Eligible Persons .....	2
MA Children and CHIP .....	3
State Hospital Admissions/Census.....	4
BENEFIT ASSISTANCE PROGRAMS FOR CHILDREN AND FAMILIES.....	5
TANF Individuals .....	5
Number and Percent: Non-disabled TANF Adults Working .....	6
Number and Percent: Non-disabled TANF Adults Working/Training 20 or More Hours/Week .....	6
TANF Workforce Participation Rates .....	7
TANF Budgets Leaving for Employment.....	8
Individuals on TANF by Length of Time.....	9
SNAP Eligible Persons.....	10
Non-disabled SNAP Adults Working .....	11
SSI Adults and Children.....	12
Child Support Measures .....	12
CHILD WELFARE SERVICES .....	13
Monthly YDC Admissions .....	13
Children in Out-of-Home Care - More or Less than 12 Months.....	13
Children Entering/Re-entering Out-of-Home Care .....	13-14
Adoption/ Discharges to Guardianship .....	14
Settings of Children in Care .....	15
Months from Removal from Home to Permanency .....	16
Child Abuse - Cases and Rates.....	16
CHILD CARE AND EARLY LEARNING SERVICES .....	16
Child Care Subsidies-Enrollment-Waiting List.....	16
Regulated Child Care Usage.....	17
Subsidized Child Care: Regulated vs. Unregulated Settings.....	17
Children in STARS 3 or 4.....	18
ITF Waiver and EI: Enrollment .....	18
LONG TERM SUPPORTS FOR PERSONS WITH DISABILITIES AND OLDER PENNSYLVANIANS	19
Waiver Enrollments (OLTL):	
Act 150.....	19
OBRA .....	19
LIFE .....	20
Community Health Choices.....	20
Wavier Enrollments (ODP):	
Consolidated and Adult Autism.....	24
P/FDS and Community Living .....	24
Community Living Waiver.....	25
Intermediate Care Facilities: Enrollments .....	25
OTHER METRICS .....	26

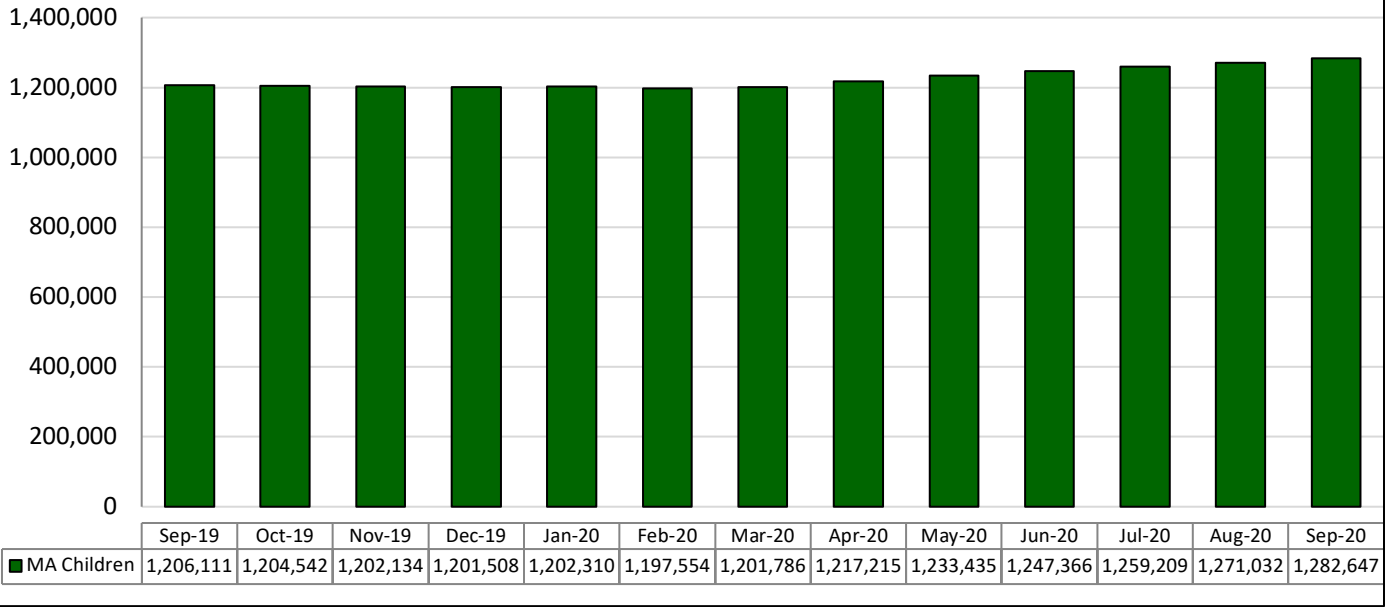
## MEDICAL ASSISTANCE AND OTHER HEALTH CARE SERVICES



Data Source: DHS ListServ

NOTE: MA numbers now reflect data pulled on the second Tuesday of the month after the reported month. Previous months are not updated to show retroactive eligibility.

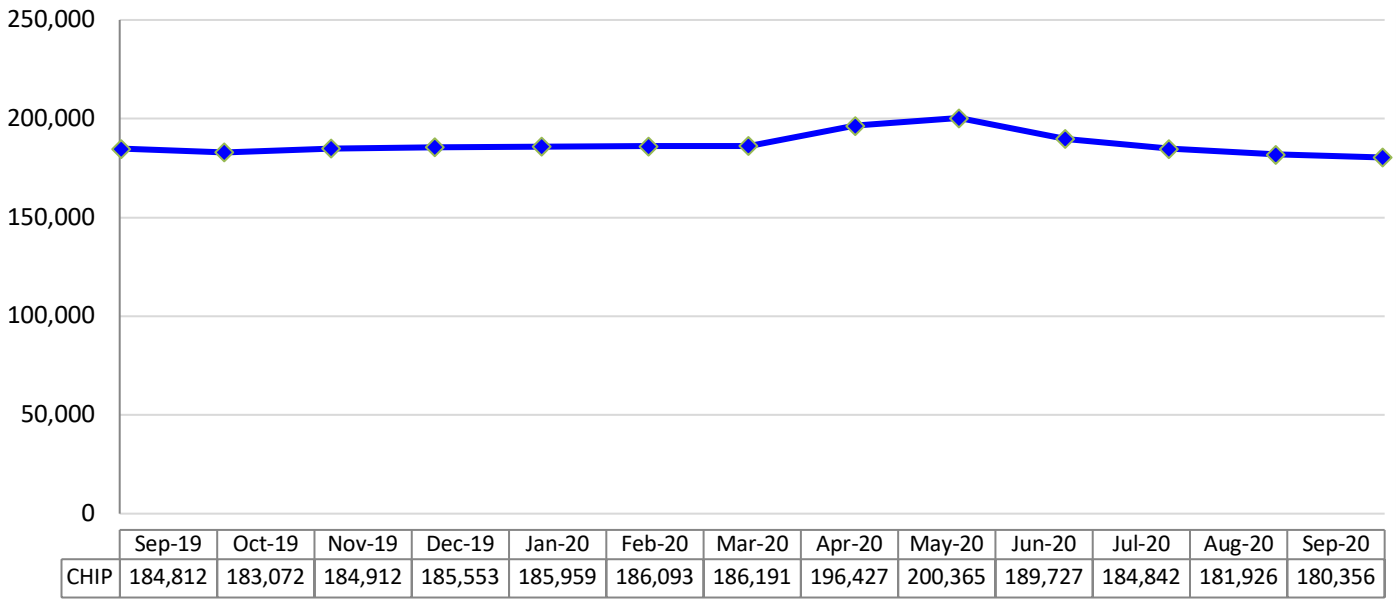
### MA Children Preliminary Estimates ("children" can include persons up to 21 years old)



Data Source: DHS Data Enterprise Warehouse

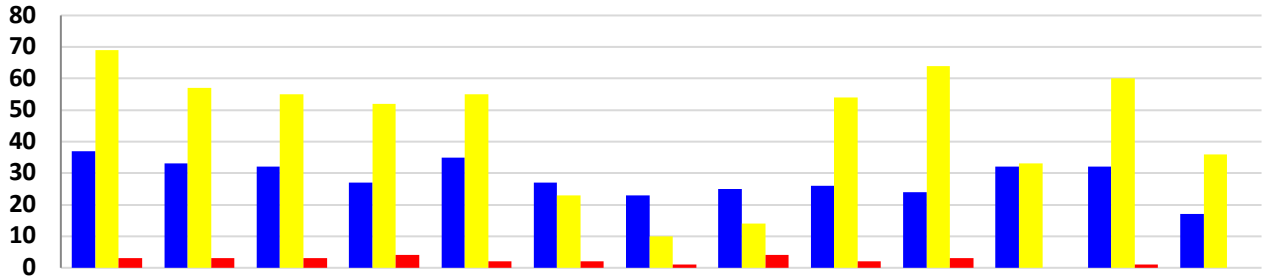
Note: Children are those recipients under the age of 21. (EC (eligible child) is no longer used for determining MA children).

### Children's Health Insurance Program (CHIP) Enrollment 2% Decreases in CHIP Enrollment From September 2019 to September 2020



Data Source: DHS Data Enterprise Warehouse

### State Hospital Admissions 51% Decrease in State Hospital Admissions from October 2019 to October 2020



	Oct-19	Nov-19	Dec-19	Jan-20	Feb-20	Mar-20	Apr-20	May-20	Jun-20	Jul-20	Aug-20	Sep-20	Oct-20
<span style="color: blue;">■</span> Civil	37	33	32	27	35	27	23	25	26	24	32	32	17
<span style="color: yellow;">■</span> Forensic	69	57	55	52	55	23	10	14	54	64	33	60	36
<span style="color: red;">■</span> Long Term Care	3	3	3	4	2	2	1	4	2	3	0	1	0

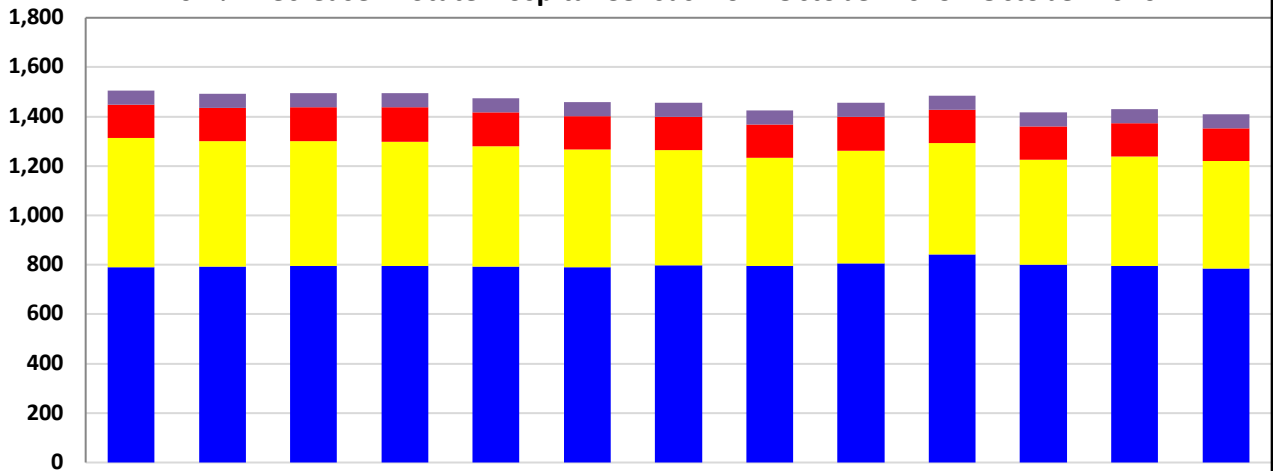
Data Source: Patient Census Information System

**Civil:** Unduplicated count of civil admissions of patients during the reporting month to: Clarks Summit State Hospital, Danville State Hospital, Norristown State Hospital, Torrance State Hospital, Warren State Hospital and Wernersville State Hospital.

**Forensic:** Unduplicated count of forensic admissions of patients during the reporting month to: Norristown State Hospital and Torrance State Hospital forensic units.

**Long Term Care:** Unduplicated count of admissions of patients during the reporting period to: South Mountain Restoration Center.

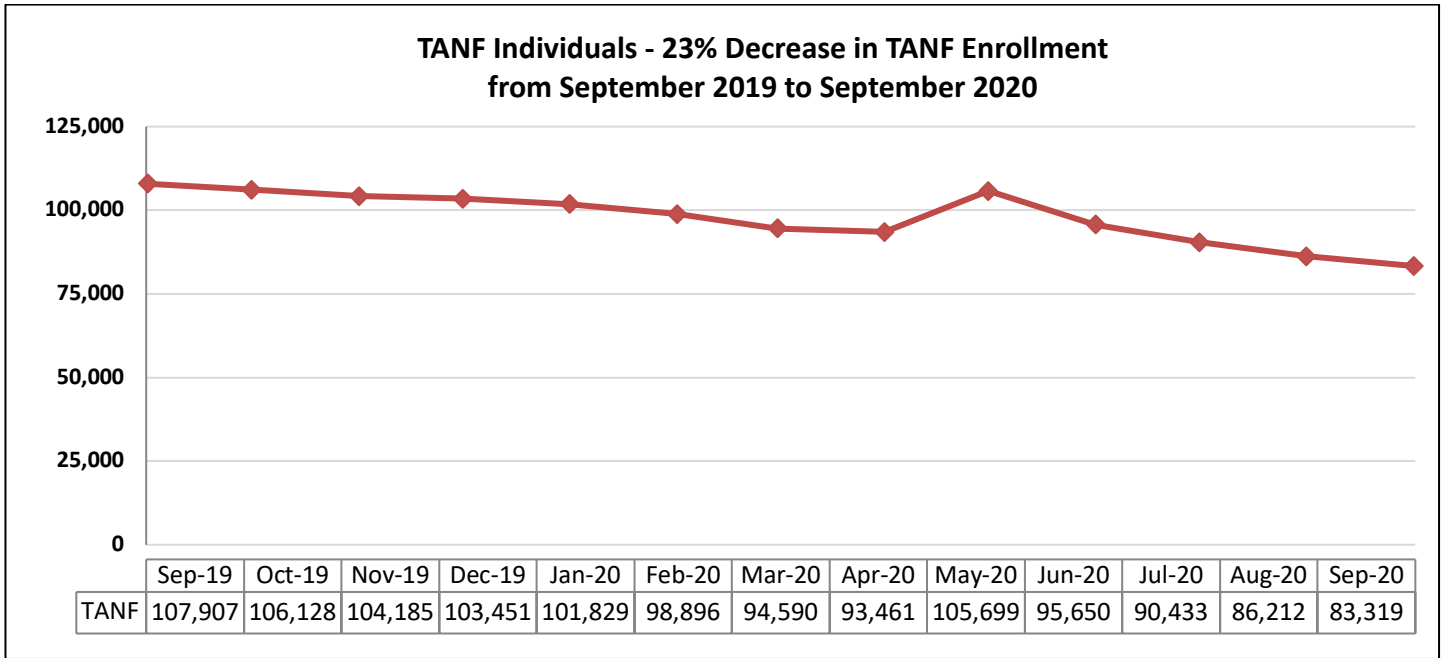
### State Hospitals Census 0.1% Decrease in State Hospital Census from October 2019 - October 2020



	Oct-19	Nov-19	Dec-19	Jan-20	Feb-20	Mar-20	Apr-20	May-20	Jun-20	Jul-20	Aug-20	Sep-20	Oct-20
<span style="color: grey;">■</span> Act 21	57	57	57	57	57	57	57	57	57	57	57	57	57
<span style="color: red;">■</span> Long Term Care	134	135	137	140	137	134	133	136	136	135	134	135	131
<span style="color: yellow;">■</span> Forensic	524	507	506	503	487	478	467	438	456	449	426	443	437
<span style="color: blue;">■</span> Civil	790	793	795	796	792	790	798	795	806	843	800	795	784

Data Source: Patient Census Information System

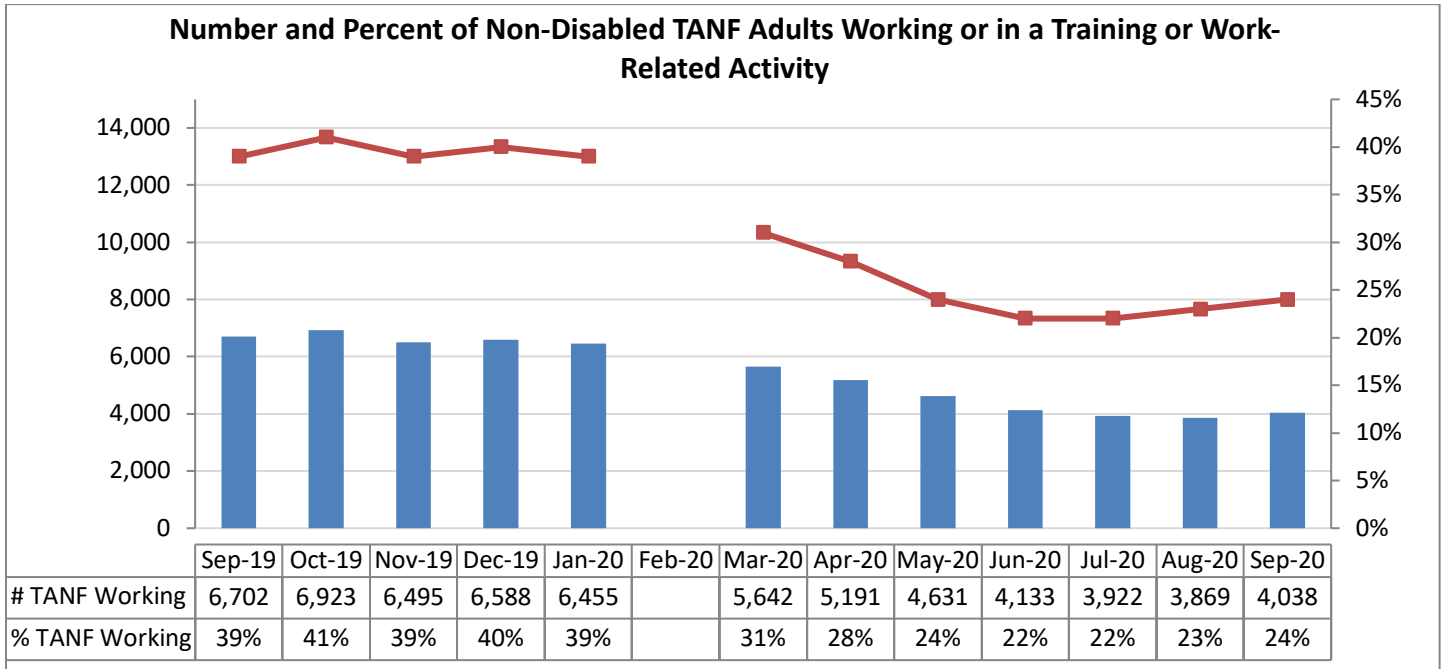
## BENEFIT ASSISTANCE PROGRAMS FOR CHILDREN AND FAMILIES



Data Source: DHS ListServ/EDW

NOTE: TANF numbers now reflect data pulled on the second Tuesday of the month after the reported month.

\*Increase in May 2020 of 10,493 persons are from the EAP. (Emergency Assistance Program). June 2020 includes 2,644 persons from EAP.

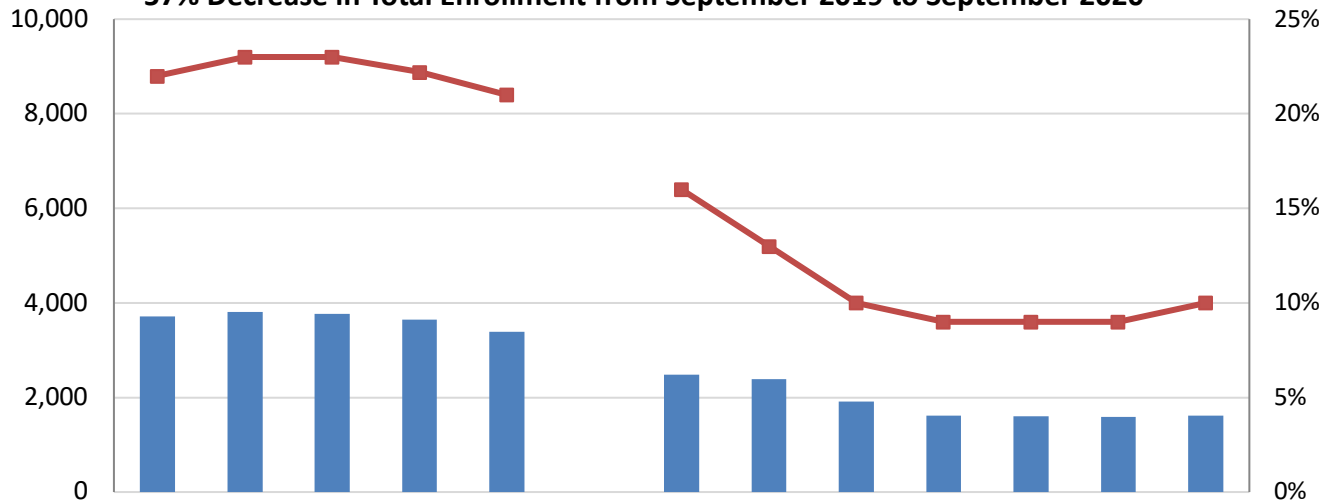


Data Source: AIS32W Report

\*Data has been updated to count only those with open cases

\*February 2020 data missing due to system update.

**Number of Non-disabled TANF Adults Working or in a Training Activity or Work-related Activity 20 Hours or More per Week -  
57% Decrease in Total Enrollment from September 2019 to September 2020**

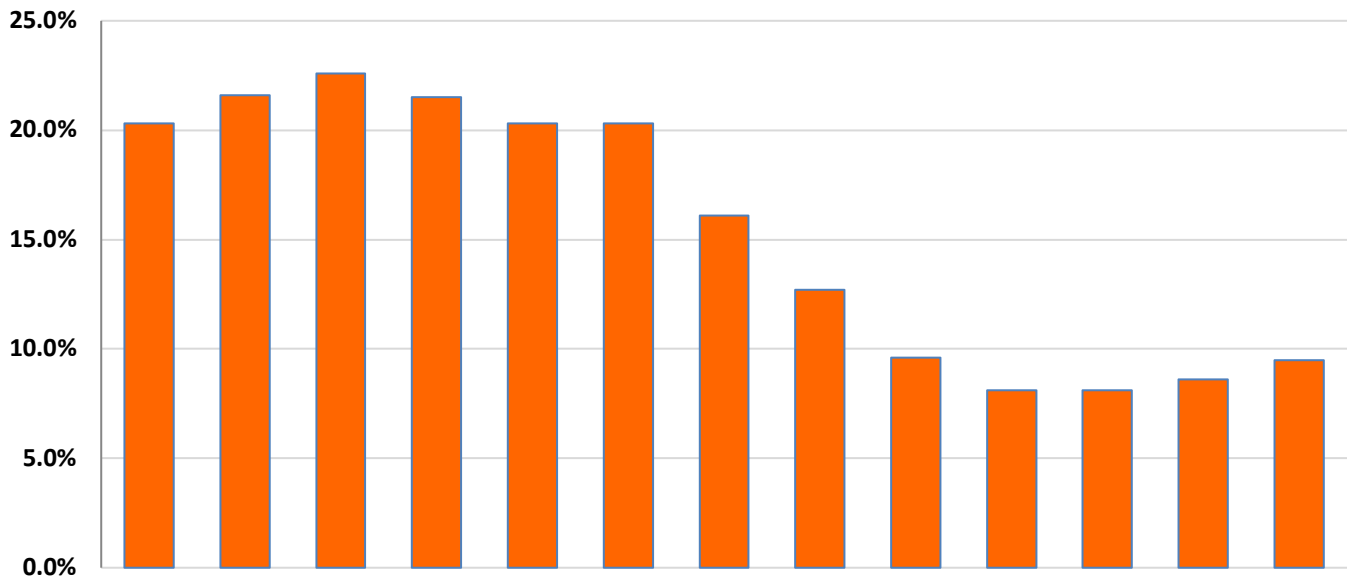


	Sep-19	Oct-19	Nov-19	Dec-19	Jan-20	Feb-20	Mar-20	Apr-20	May-20	Jun-20	Jul-20	Aug-20	Sep-20
# 20 Hrs/Wk	3,707	3,812	3,767	3,647	3,393		2,483	2,387	1,911	1,614	1,597	1,594	1,612
% 20Hrs/Wk	22%	23%	23%	22%	21%		16%	13%	10%	9%	9%	9%	10%

\*February 2020 data missing due to system update. Will be updated at a later date

Data Source: AIS32W Report

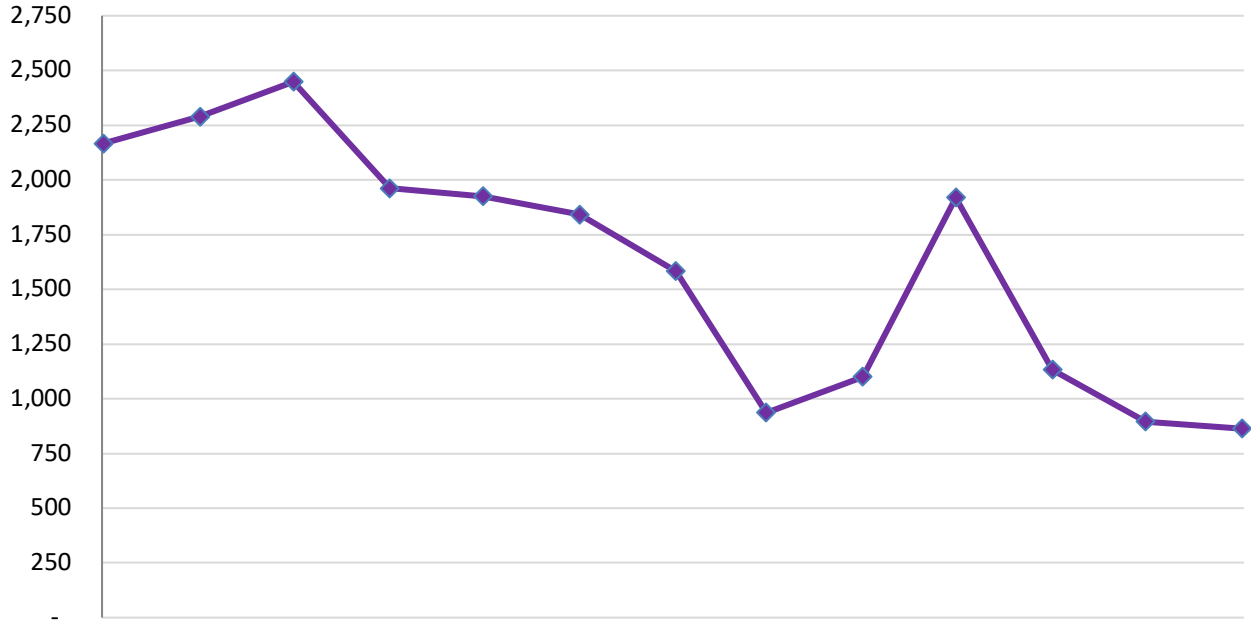
**Pennsylvania Estimated TANF Workforce Participation Rate**



	Sep-19	Oct-19	Nov-19	Dec-19	Jan-20	Feb-20	Mar-20	Apr-20	May-20	Jun-20	Jul-20	Aug-20	Sep-20
TANF WPR	20.3%	21.6%	22.6%	21.5%	20.3%	20.3%	16.1%	12.7%	9.6%	8.1%	8.1%	8.6%	9.5%

Data Source: TNF22 Report

**TANF Individuals that Obtain Employment  
60% Decrease from August 2019 to August 2020**

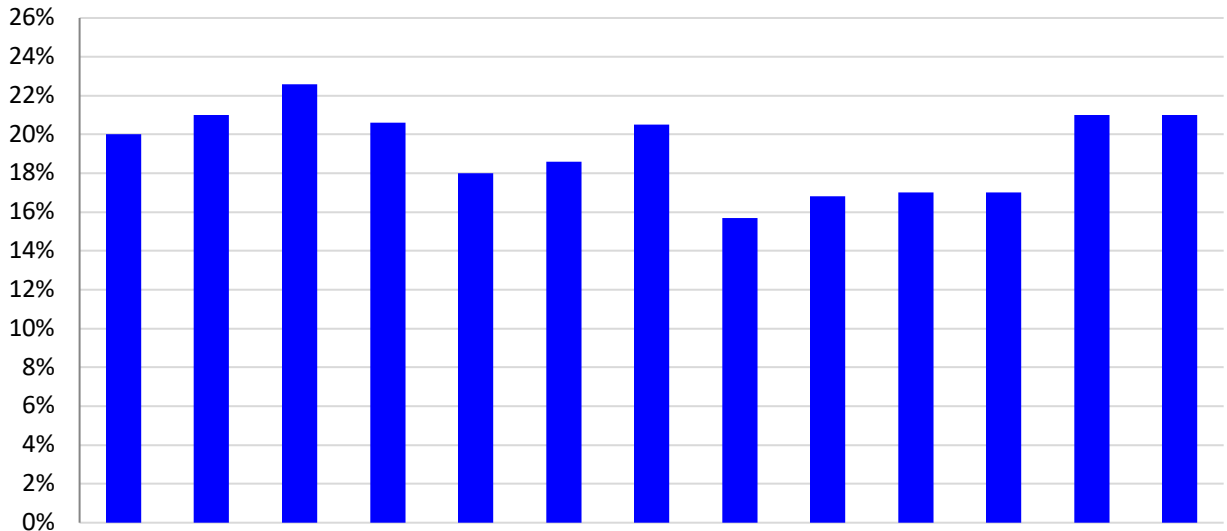


	Aug-19	Sep-19	Oct-19	Nov-19	Dec-19	Jan-20	Feb-20	Mar-20	Apr-20	May-20	Jun-20	Jul-20	Aug-20
TANF Employment	2,166	2,289	2,448	1,961	1,925	1,841	1,582	936	1,100	1,919	1,132	896	863

DHS Data Enterprise Warehouse

A budget is one or more related or unrelated individuals who occupy a common residence or would occupy a common residence if they were not homeless, and whose needs are considered together in determining eligibility for assistance are considered together in determining eligibility for assistance under one category of assistance.

**TANF Budgets Leaving for Employment as Percent of All Budgets that Left TANF**

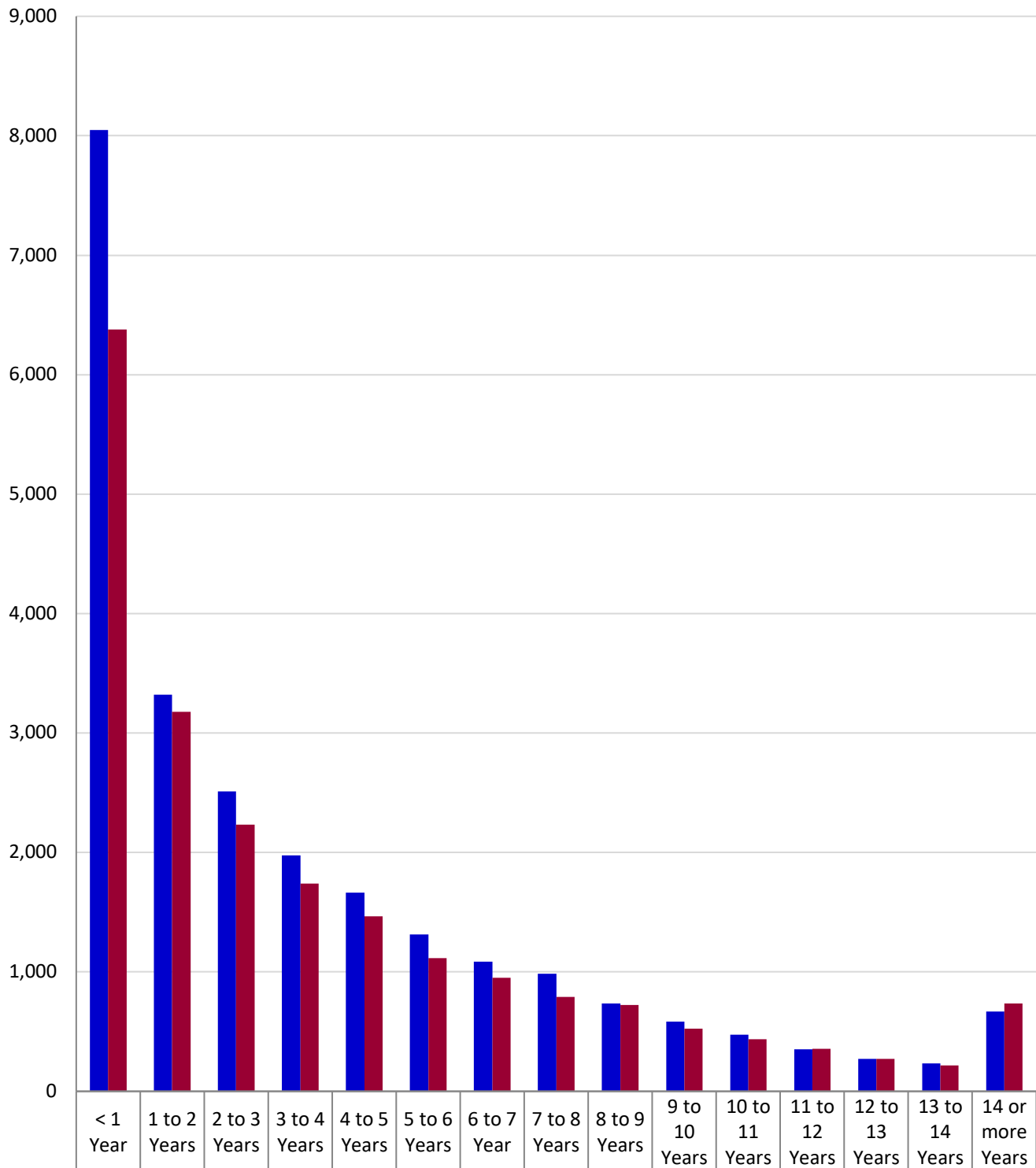


	Sep-19	Oct-19	Nov-19	Dec-19	Jan-20	Feb-20	Mar-20	Apr-20	May-20	Jun-20	Jul-20	Aug-20	Sep-20
TANF Employment	20%	21%	23%	21%	18%	19%	21%	16%	17%	17%	17%	21%	21%

DHS Data Enterprise Warehouse



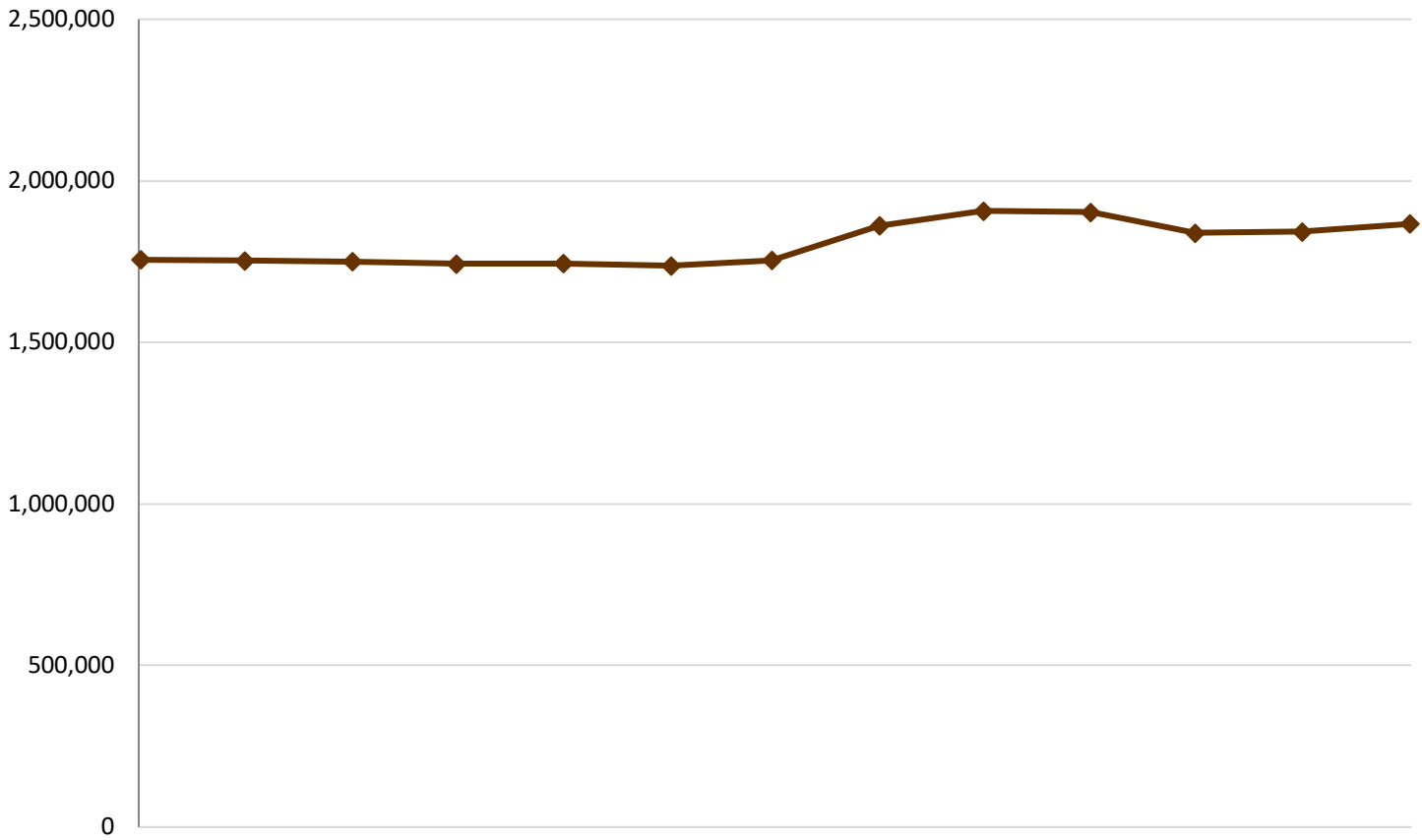
### Adults on TANF by Length of Time



Data Source: AIS32W File

Note: Total time on TANF is cumulative, not subsequent (i.e., as a person moves on and off TANF, each time they are on will add to their total), and also includes time spent on TANF as a child.

**SNAP Eligible Persons**  
**6% Increase in SNAP Enrollment from Sept 2019 to Sept 2020**

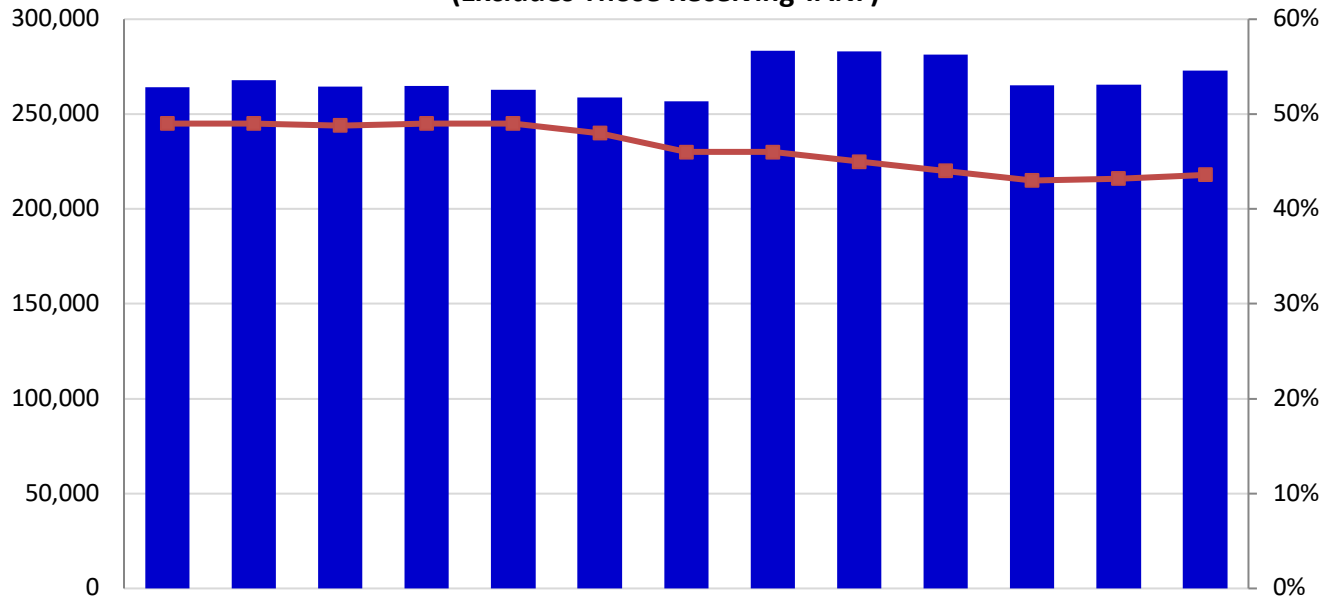


	Sep-19	Oct-19	Nov-19	Dec-19	Jan-20	Feb-20	Mar-20	Apr-20	May-20	Jun-20	Jul-20	Aug-20	Sep-20
SNAP	1,755,692	1,752,648	1,750,158	1,743,716	1,744,689	1,737,459	1,754,453	1,860,866	1,907,096	1,903,555	1,839,000	1,843,083	1,866,614

Data Source: DHS ListServ/EDW

NOTE: SNAP numbers now reflect data pulled on the second Tuesday of the month after the reported month.

### Number and Percent of Non-disabled SNAP Adults Working (Excludes Those Receiving TANF)\*

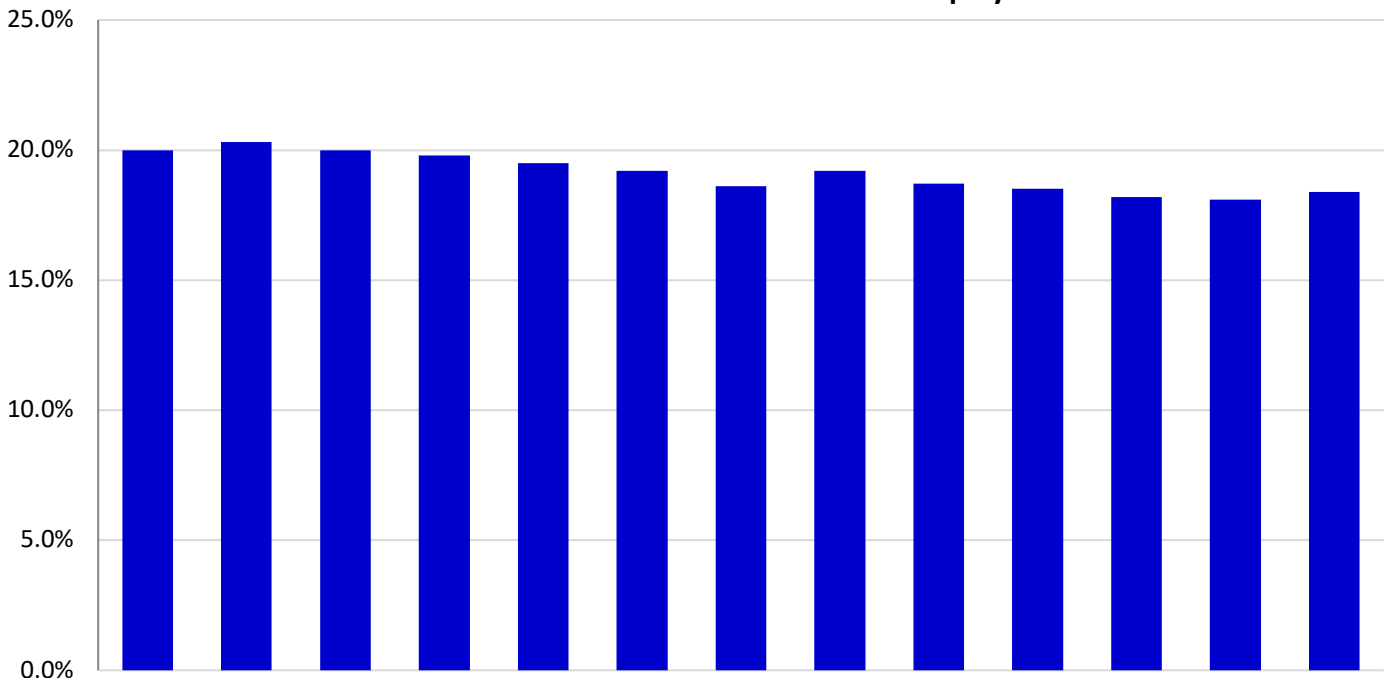


	Sep-19	Oct-19	Nov-19	Dec-19	Jan-20	Feb-20	Mar-20	Apr-20	May-20	Jun-20	Jul-20	Aug-20	Sep-20
# SNAP Working	264,131	267,871	264,584	264,789	262,650	258,808	256,741	283,241	282,966	281,288	265,113	265,339	272,873
% SNAP Working	49%	49%	49%	49%	49%	48%	46%	46%	45%	44%	43%	43%	44%

\*Beginning in Jan 2018, SNAP Adults working includes non-elderly only.

Data Source: DHS Enterprise Data Warehouse

### Percent of Non-disabled SNAP Adults with Full-time Employment\*

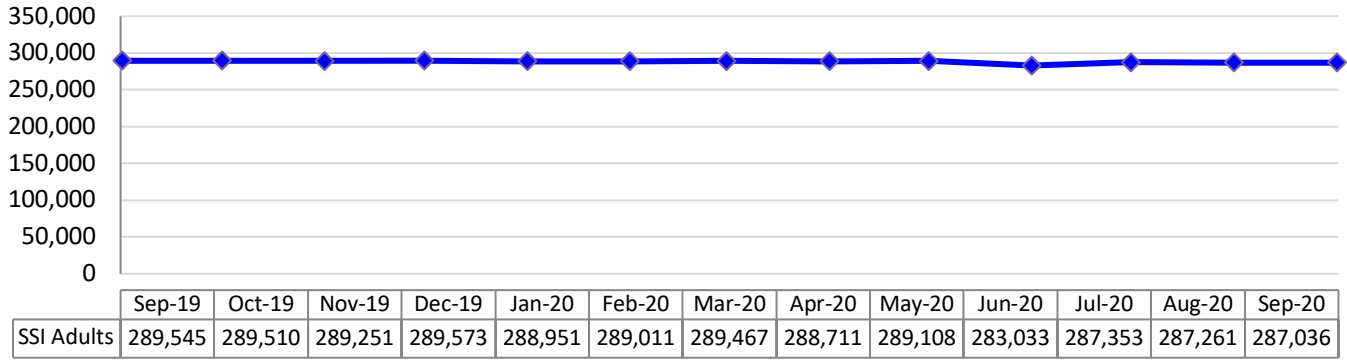


	Sep-19	Oct-19	Nov-19	Dec-19	Jan-20	Feb-20	Mar-20	Apr-20	May-20	Jun-20	Jul-20	Aug-20	Sep-20
% SNAP Working	20.0%	20.3%	20.0%	19.8%	19.5%	19.2%	18.6%	19.2%	18.7%	18.5%	18.2%	18.1%	18.4%

\*Full-time status according to CIS Employment Status Code

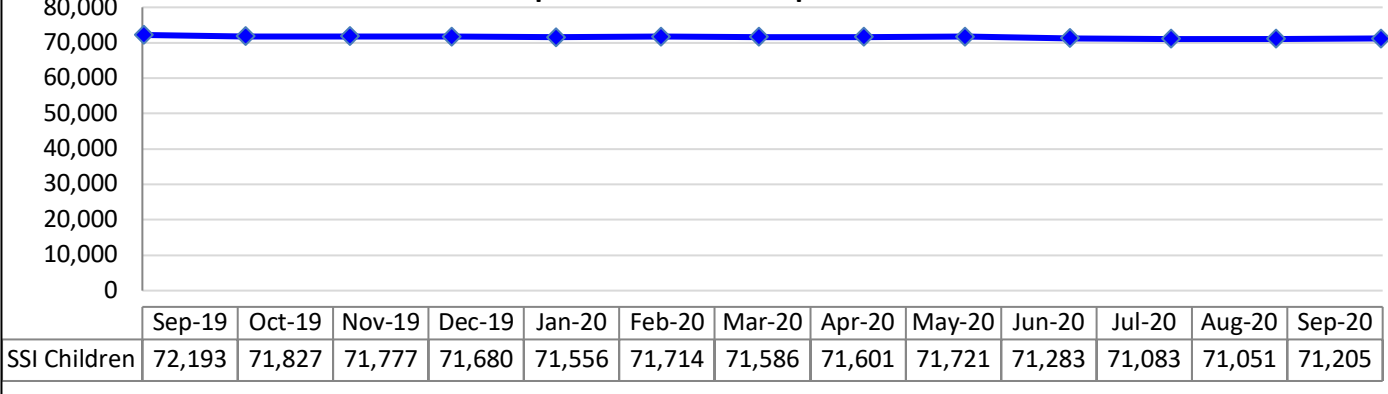
Data Source: DHS Enterprise Data Warehouse

**SSI Adults -- 0.9% Decrease in Total Adult SSI Enrollment  
from September 2019 to September 2020**



Data Source: DHS Enterprise Data Warehouse

**SSI Children -- 1.4% Decrease in Total Child SSI Enrollment  
from September 2019 to September 2020**



Data Source: DHS Enterprise Data Warehouse

**Child Support Measures**

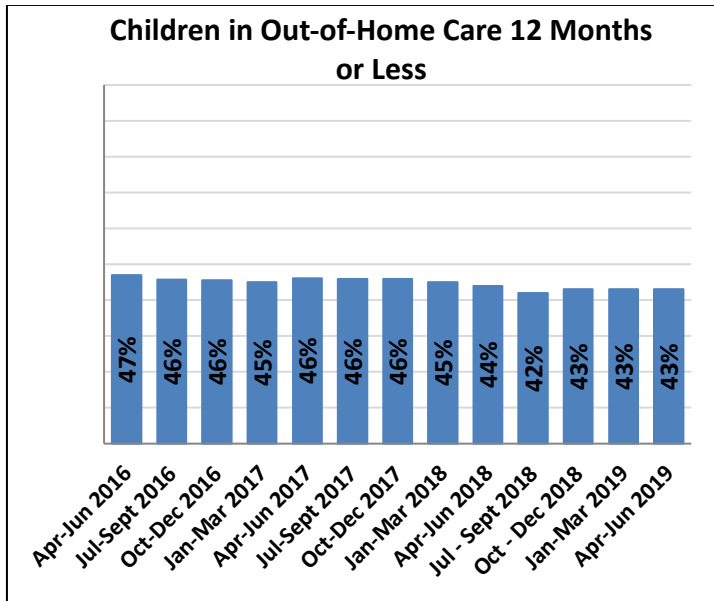
Child Support	Federal Target	Pennsylvania Rate												
		Sept 2019	Oct 2019*	Nov 2019	Dec 2019	Jan 2020	Feb 2020	Mar 2020	Apr 2020	May 2020	June 2020	July 2020	Aug 2020	Sept 2020
Child Support - Cases with Paternity Establishments**	80%	108%	94%*	95%	96%	98%	98%	100%	100%	101%	101%	101%	102%	103%
Child Support - Current Supports Collected	80%	84%	85%*	85%	85%	84%	84%	84%	83%	83%	83%	83%	83%	83%
Child Support - Percent of Cases Paying Arrears	80%	85%	48%*	62%	67%	72%	74%	78%	79%	83%	85%	85%	87%	87%
Cases with Orders	80%	90%	90%	90%	90%*	90%	90%	90%	90%	90%	91%	90%	90%	90%
Cost Effectiveness (FFY)	\$5.00	FFY 2015-16: \$5.10			FFY 2016-17: \$5.43			FFY 2017-18: \$5.02			FFY 2018-19: \$4.78		FFY 2019-20: \$4.49	

\*Drop from September to October due to starting of new Federal Fiscal Year (compare with previous year) Data Source: OCSE Reports

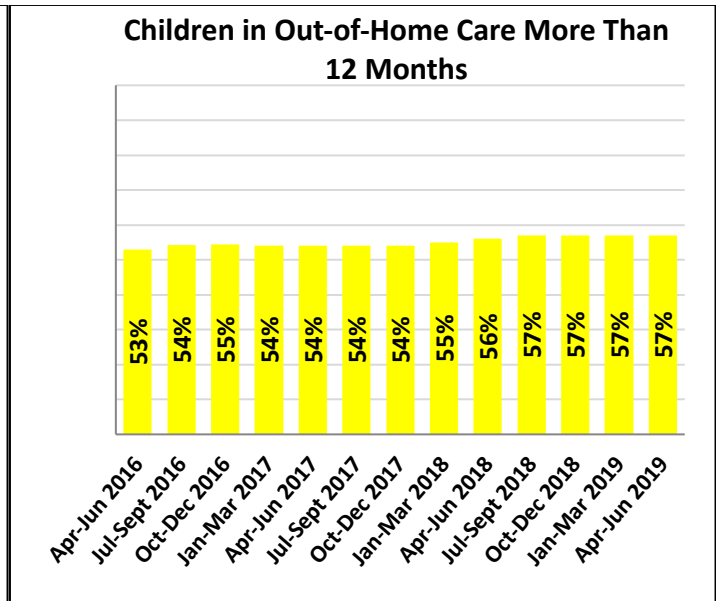
## CHILD WELFARE SERVICES

Category: YDC/YFC's	Current	Average
Monthly Admissions	28 (September 2020)	<b>Rolling Year Average</b> 31 (Oct 2019 – Sept 2020)
Level of Improvement in Life Skills from Intake to Discharge for all YDC/YFC participants completing program	8.4% (September 2020)	<b>Rolling Year Average</b> 7.7% (Oct 2019 – Sept 2020)

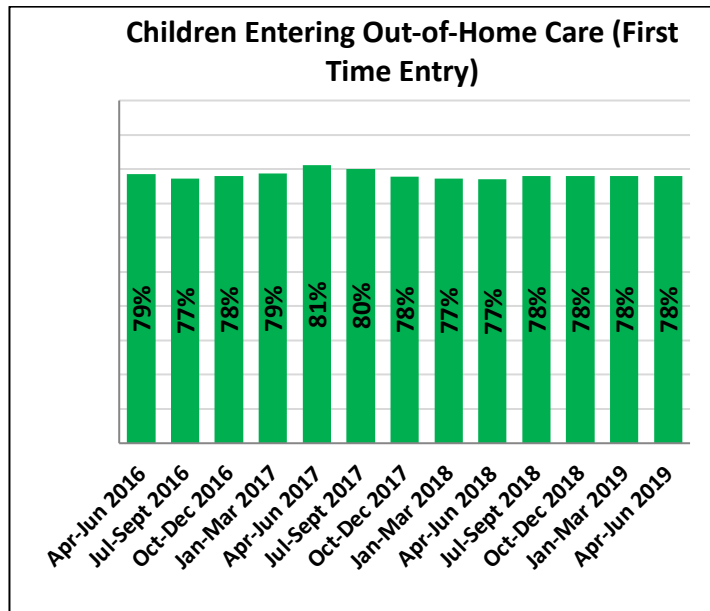
Data Source: Automatic Intake and Incident Reporting System (admissions); Ansell-Casey Life Skills Assessment (life skills)



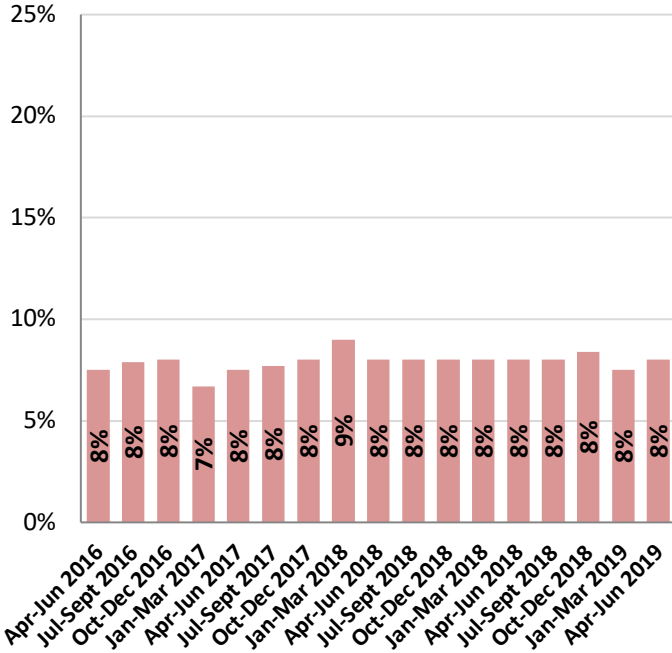
Data Source: AFCARS



Data Source: AFCARS

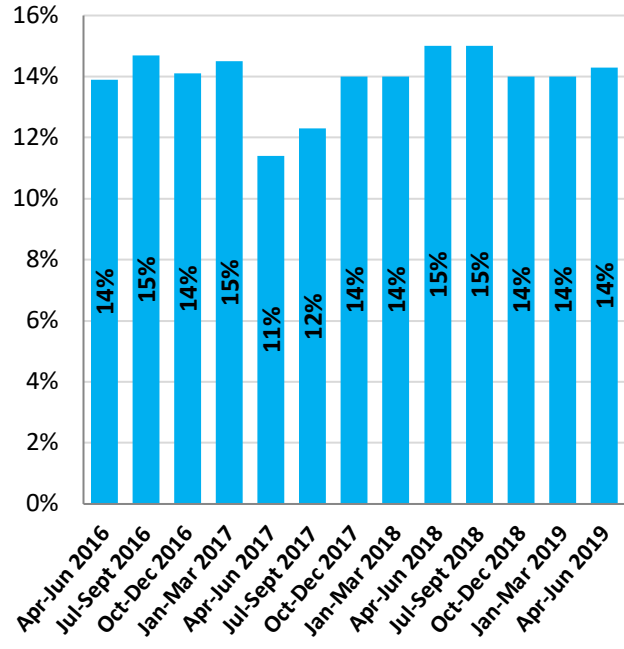


### Children Re-entering Out-of-Home Care: >12 Months Since Discharge



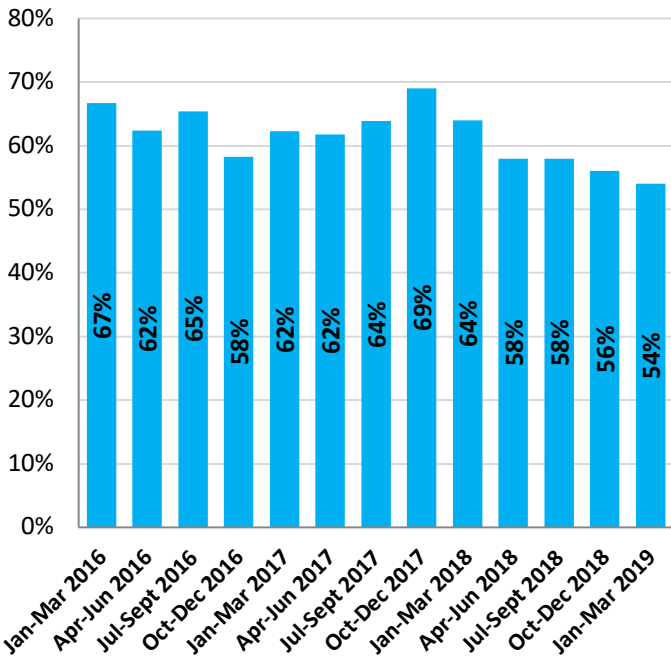
Data Source: AFCARS

### Children Re-entering Out-of-Home Care: <12 Months Since Discharge



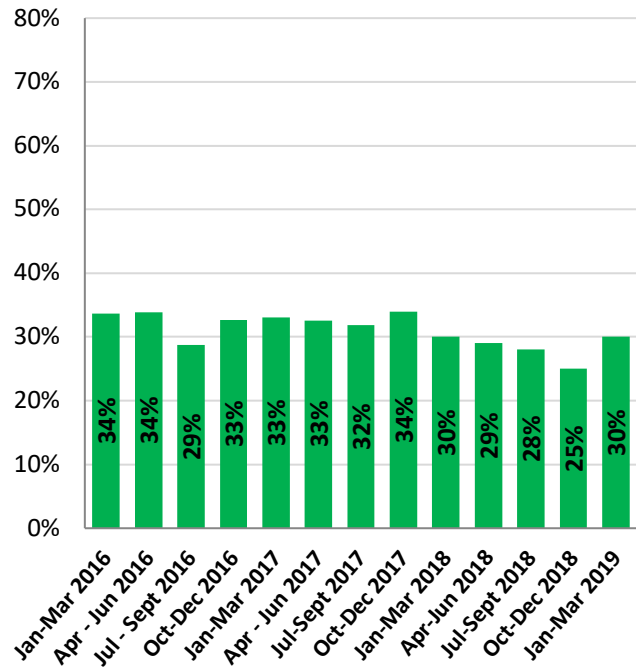
Data Source: AFCARS

### Discharges to Guardianship in 24 Months or Less



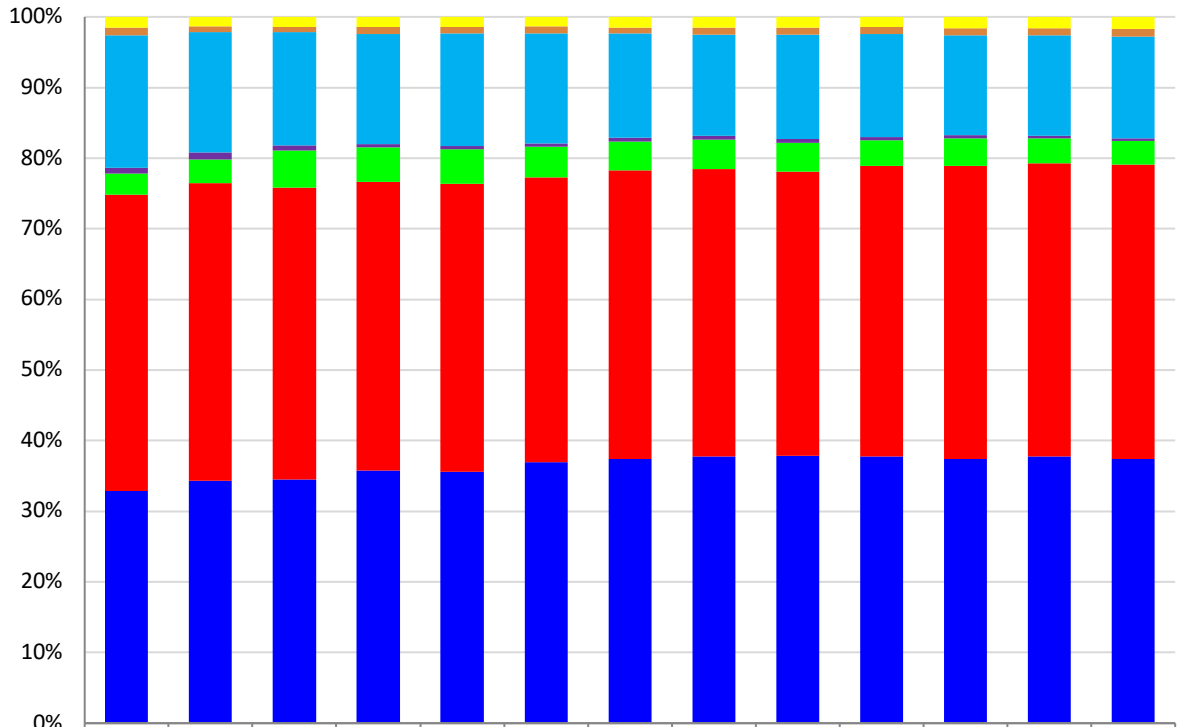
Data Source: AFCARS

### Adoption: 24 Months or Less



Data Source: AFCARS

### Child Welfare: Settings of Children in Care



	Jan - Mar 2016	Apr - Jun 2016	Jul - Sept 2016	Oct - Dec 2016	Jan - Mar 2017	Apr - Jun 2017	Jul - Sept 2017	Oct - Dec 2017	Jan - Mar 2018	Apr - June 2018	Jul - Sep 2018	Oct - Dec 2018	Jan - Mar 2019
Supervised IL	248	215	222	223	230	216	252	249	249	235	264	259	276
Runaway Status	182	149	127	159	148	166	134	166	166	168	165	162	179
Residential	3,104	2,807	2,540	2,481	2,628	2,588	2,487	2,370	2,453	2,454	2,341	2,302	2,341
Trial Home Visit	132	165	111	80	66	83	84	99	83	84	66	65	65
Pre-adoptive Home	495	561	842	779	805	713	689	679	679	605	643	567	536
Foster Family - Non-Relative	6,934	6,951	6,573	6,490	6,685	6,687	6,857	6,745	6,662	6,909	6,858	6,728	6,795
Foster Family - Relative	5,432	5,679	5,478	5,694	5,847	6,122	6,286	6,248	6,281	6,355	6,165	6,112	6,080

**"Supervised Independent Living"** = those in an alternative transitional living arrangement where the child is under the supervision of the agency but without 24 hour adult supervision, is receiving financial support from the child welfare agency, and is in a setting which provides the opportunity for increased responsibility for self care.

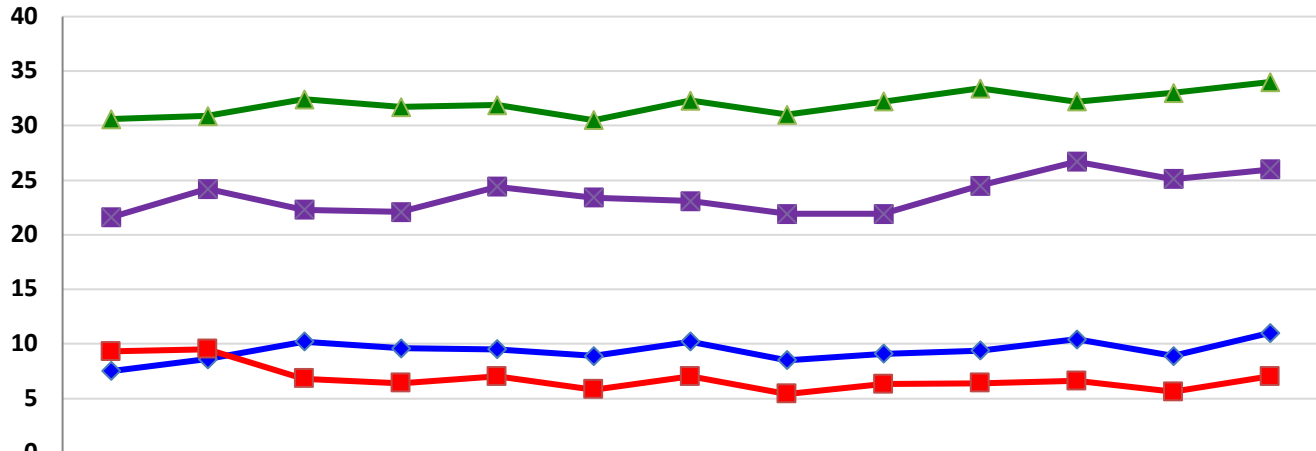
**"Runaway"** = those who have run away from the foster care setting.

**"Residential Setting"** = those placed in a group home or institution

**"Home Setting"** = those placed in pre-adoptive homes, Family Foster Home-relative, Family Foster Home-non-relative and trial home visits.

Data Source: AFCARS

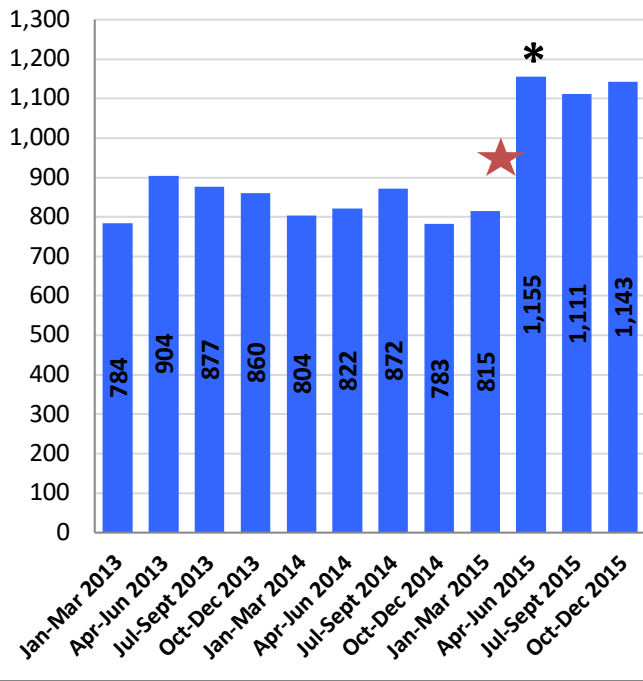
### Average Number of Months from Latest Removal from Home to Permanency Category



	Jan-Mar 2016	Apr-Jun 2016	Jul-Sept 2016	Oct-Dec 2016	Jan-Mar 2017	Apr-Jun 2017	Jul-Sept 2017	Oct-Dec 2017	Jan-Mar 2018	Apr-Jun 2018	Jul-Sept 2018	Oct-Dec 2018	Jan-Mar 2019
Reunification	8	9	10	10	10	9	10	9	9	9	10	9	11
Kinship Care	9	10	7	6	7	6	7	5	6	6	7	6	7
Adoption	31	31	32	32	32	31	32	31	32	33	32	33	34
Guardianship	22	24	22	22	24	23	23	22	22	25	27	25	26

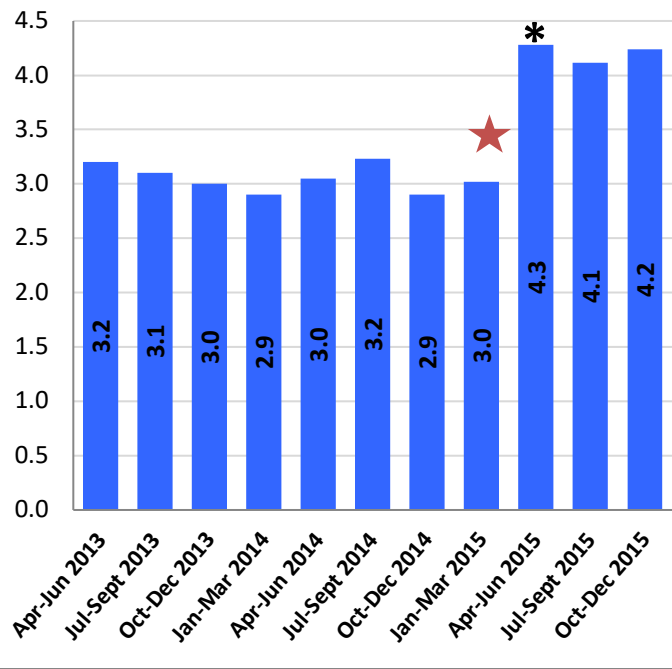
Data Source: AFCARS

### Substantiated Reports of Child Abuse/Neglect in PA



Data Source: Childline

### Rate per 10,000 Children of Substantiated Reports of Child Abuse/Neglect in PA



Data Source: Childline

\* Increase due to new statutes requiring County Child Welfare agencies to complete an investigation and submit outcomes within 60 days.

★ Data for January-March quarter is incomplete due to data conversion to new system

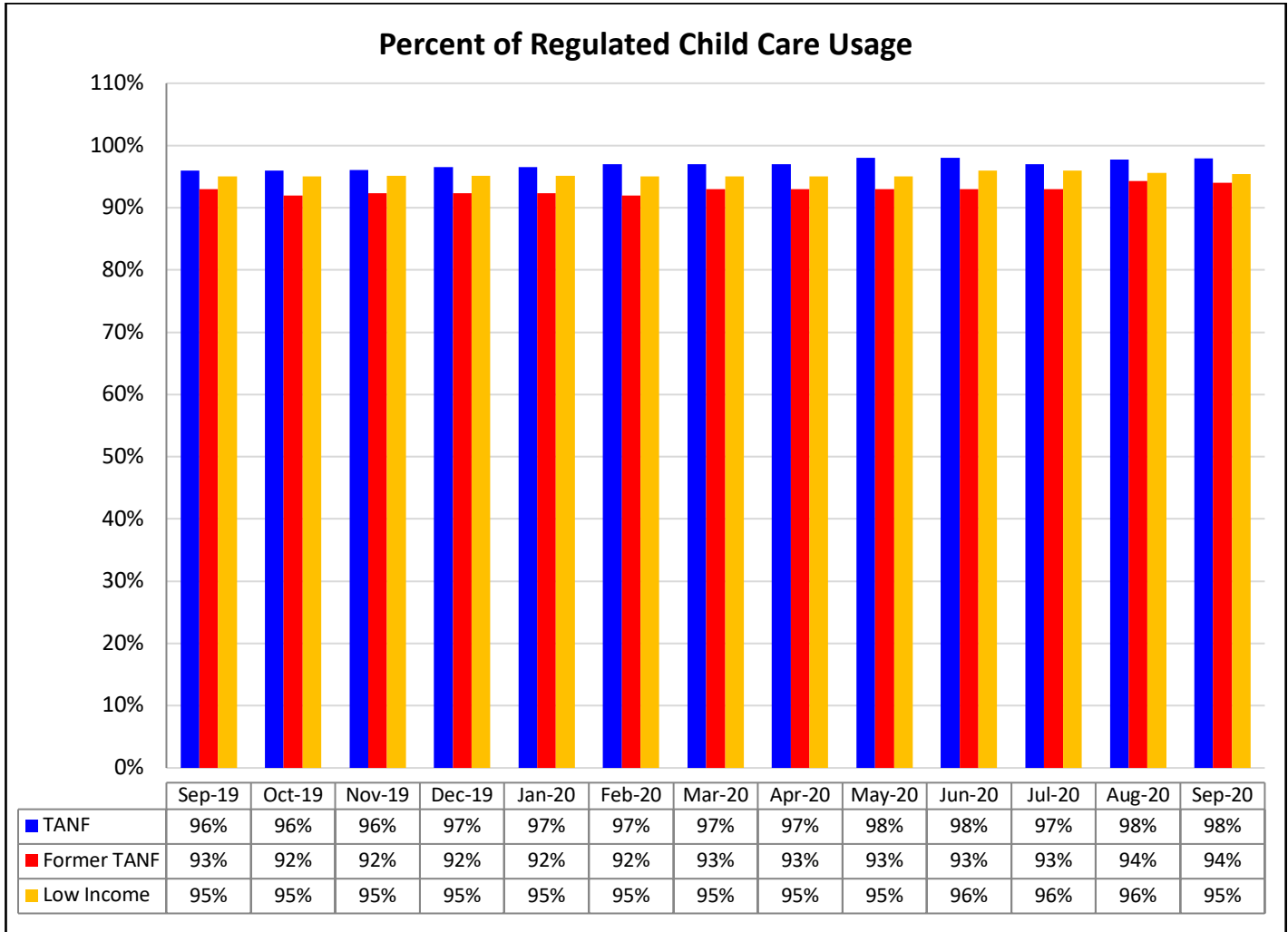


## CHILD CARE AND EARLY LEARNING SERVICES

Child Care Subsidies	Number of Children Receiving* (Sept 2020)	Encumbrance (Sept 2020)	# on Waiting List (Sept 2020)
TANF	4,628	145%	0
Former TANF	29,866	82%	0
Low Income	67,999	118%	1,395

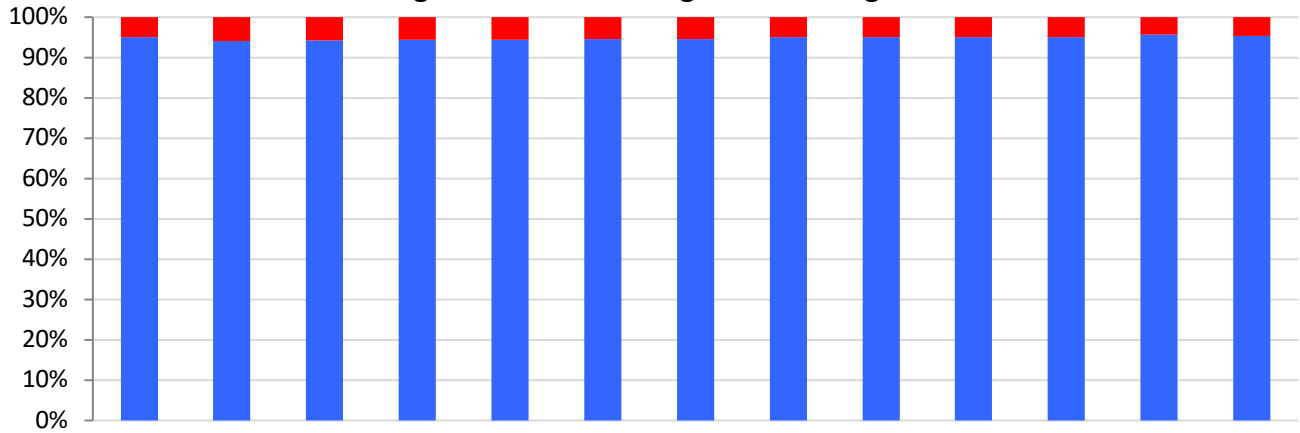
Data Sources: PELICAN CCW and PELICAN Child Care DW

\*Preliminary Number – final number will be determined as additional data becomes available.



Data Source: PELICAN CCW

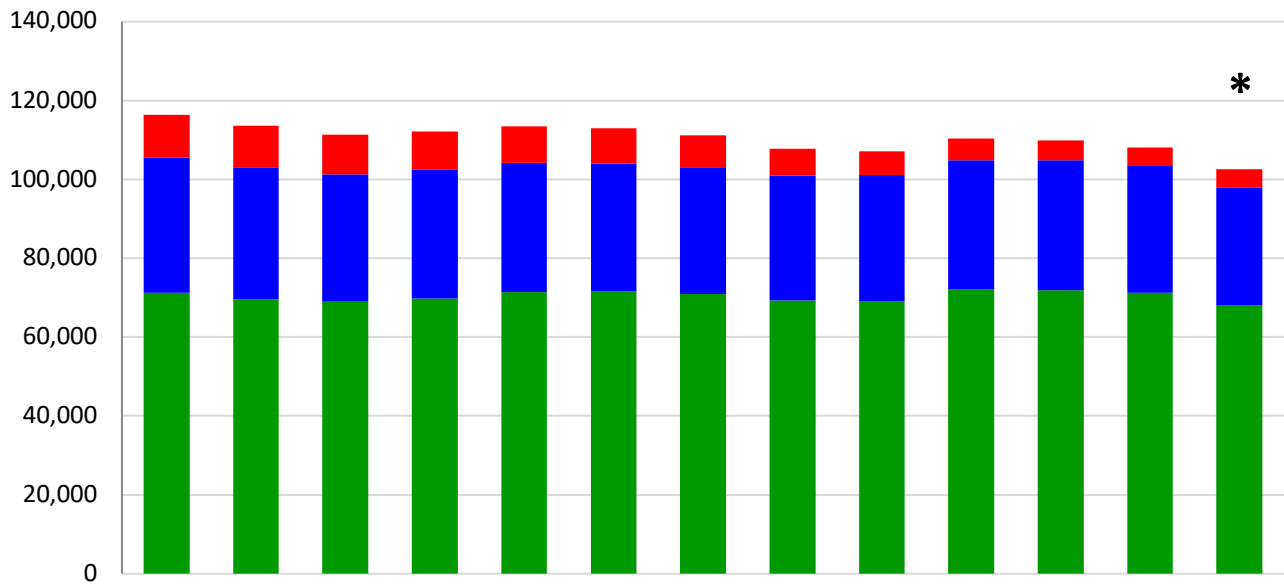
### Percent of Children Receiving Subsidized Child Care in Regulated Versus Unregulated Settings



	Sep-19	Oct-19	Nov-19	Dec-19	Jan-20	Feb-20	Mar-20	Apr-20	May-20	Jun-20	Jul-20	Aug-20	Sep-20
■ Unregulated	5%	6%	6%	6%	6%	6%	5%	5%	5%	5%	5%	4%	5%
■ Regulated	95%	94%	94%	94%	94%	95%	95%	95%	95%	95%	95%	96%	95%

Data Source: PELICAN CCW

### Children Receiving Subsidized Child Care

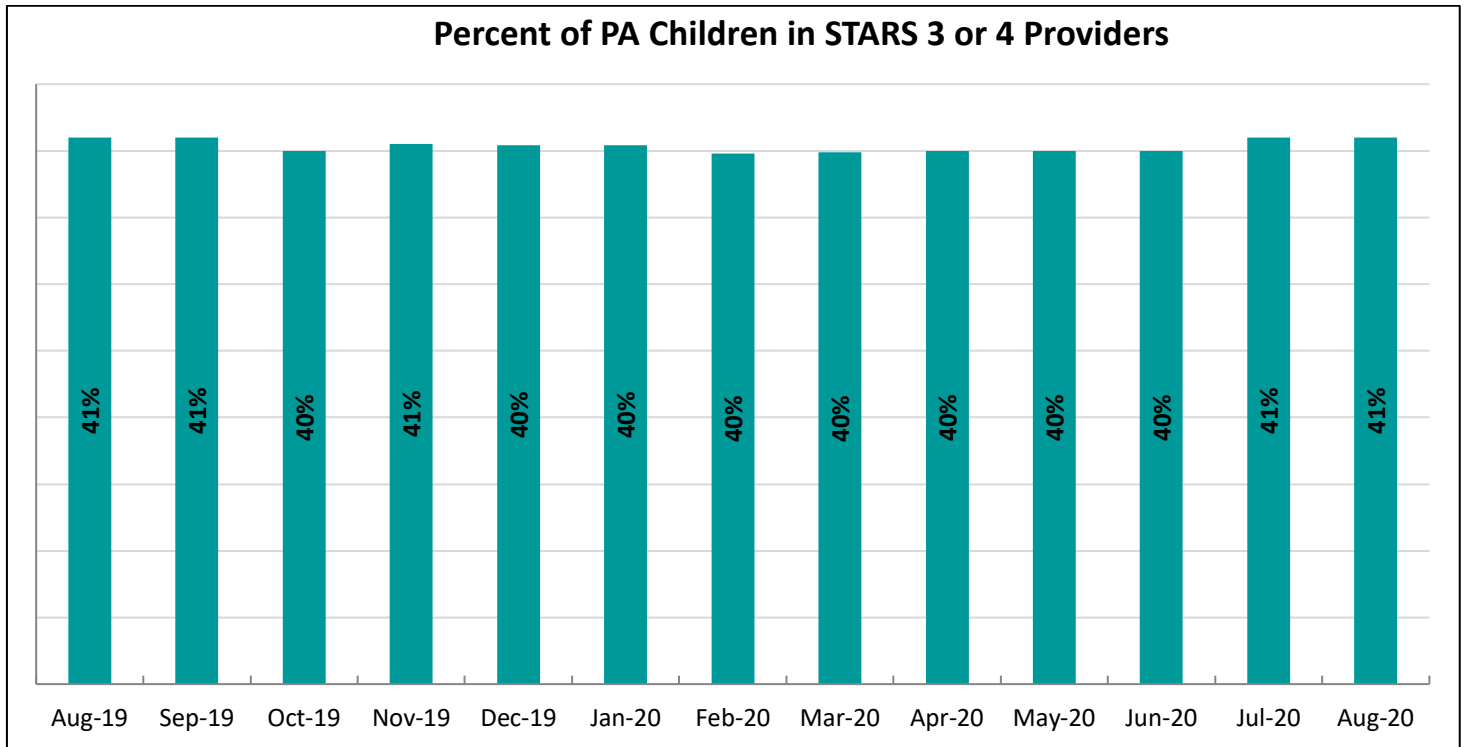


	Sep-19	Oct-19	Nov-19	Dec-19	Jan-20	Feb-20	Mar-20	Apr-20	May-20	Jun-20	Jul-20	Aug-20	Sep-20
■ TANF	10,857	10,619	9,944	9,781	9,343	8,993	8,256	6,875	6,048	5,553	5,097	4,688	4,628
■ Former TANF	34,310	33,381	32,322	32,566	32,768	32,505	32,114	31,655	31,931	32,788	32,949	32,192	29,866
■ Low Income	71,188	69,681	69,005	69,786	71,400	71,500	70,851	69,278	69,130	72,023	71,883	71,248	67,999

\*Preliminary Numbers – final numbers will be determined as additional data becomes available Data Source: PELICAN CCW  
 NOTE: Beginning July 2012, number of children being served has decreased due to correction of a contractor error where children on the waiting list were being counted as receiving services.

Keystone STARS	Current	Historical
% of Keystone STARS Providers at STAR 3 or STAR 4	26% (Sept 2020)	26% (Aug 2020)

Data Source: PELICAN KTQ



Data Source: PELICAN CCW

Infants, Toddlers, and Families Waiver and Early Intervention (0-3)	Current	Historical
Early Intervention Enrollment (1-day Count)	22,905 (Sept 2020)	22,905 (Aug 2020)
Early Intervention Enrollment (Unduplicated Total)	26,423 (Sept 2020)	23,198 (Aug 2020)
Waiver (Monthly Average)	1,445 (Sept 2020)	1,309 (Aug 2020)
Children Who Met EI Goals Prior to 3 <sup>rd</sup> Birthday	334 (26%) (Sept 2020)	286 (23%) (Aug 2020)

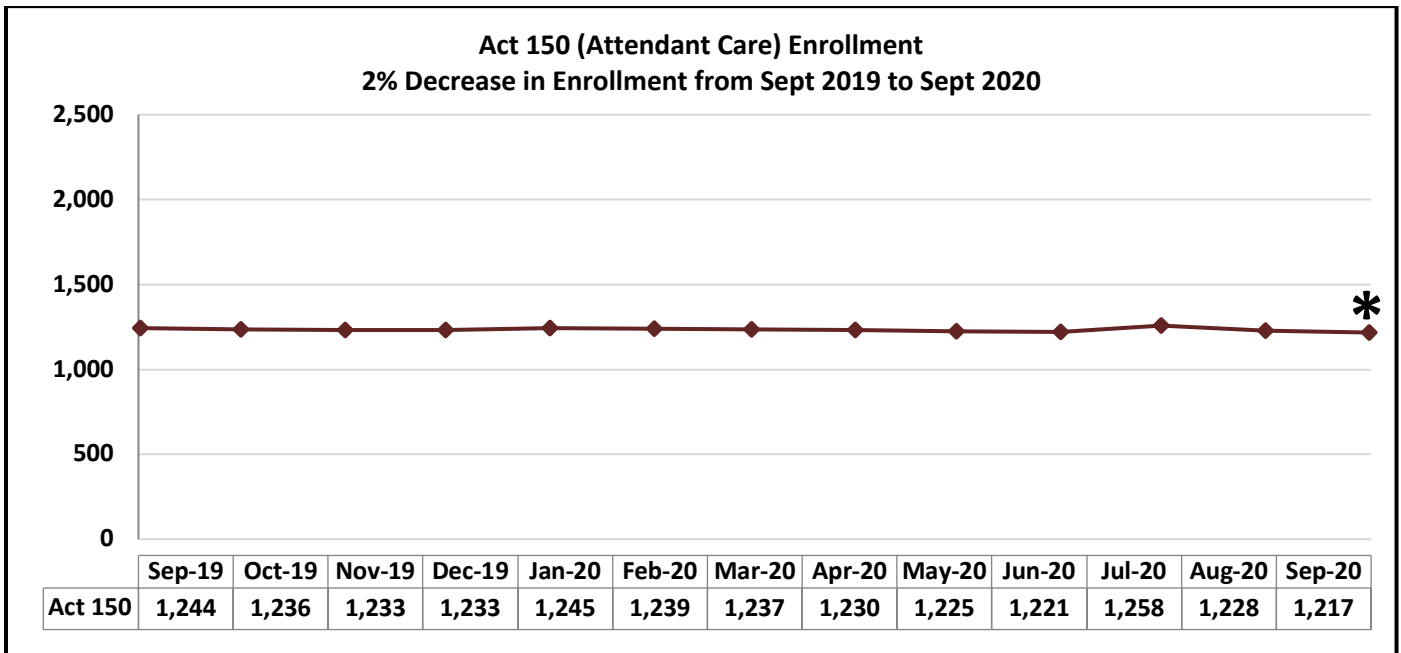
Data Sources: HCSIS DW, EI Ad Hoc Reporting Tool

**Early Intervention Enrollment** – The total number of children currently receiving services and supports through the EI program. The count of children (birth to three) who have a 25% delay in one or more of the following areas: cognitive development; physical development including vision and hearing; communication development; social or emotional development; or adaptive development.

**ITF Waiver Enrollment** – The total number of children currently receiving services and supports through the Infants, Toddlers, and Families Waiver. The count of children (birth to three) who are eligible for Medical Assistance, have a 50% delay in one area or 33% delay in two areas, and receive services in the home or a community setting.

**Early Intervention Children Who Met EI Goals Prior to 3<sup>rd</sup> Birthday** – Of children receiving early intervention services between the ages of zero and three, the number who meet their developmental goals by their 3<sup>rd</sup> birthday.

## LONG TERM SUPPORTS FOR PERSONS WITH DISABILITIES AND OLDER PENNSYLVANIANS

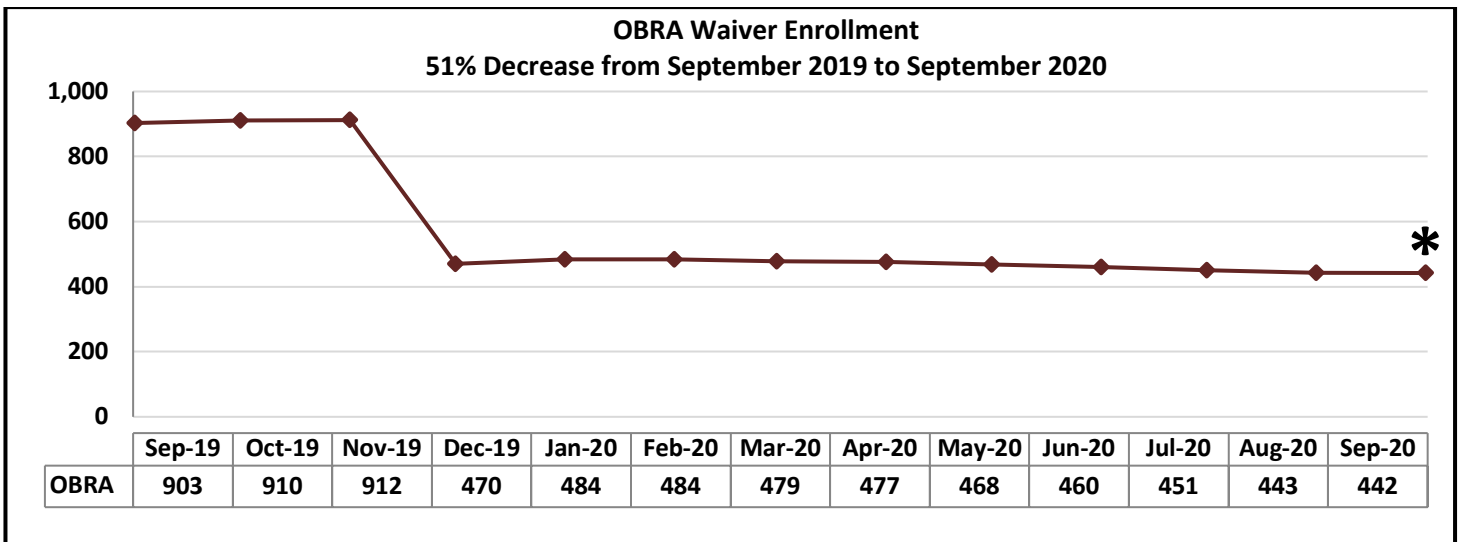


Source: DHS Enterprise Data Warehouse

**\*Preliminary Number – will be updated as additional data becomes available**

Data is for statewide Fee for Service enrollment only.

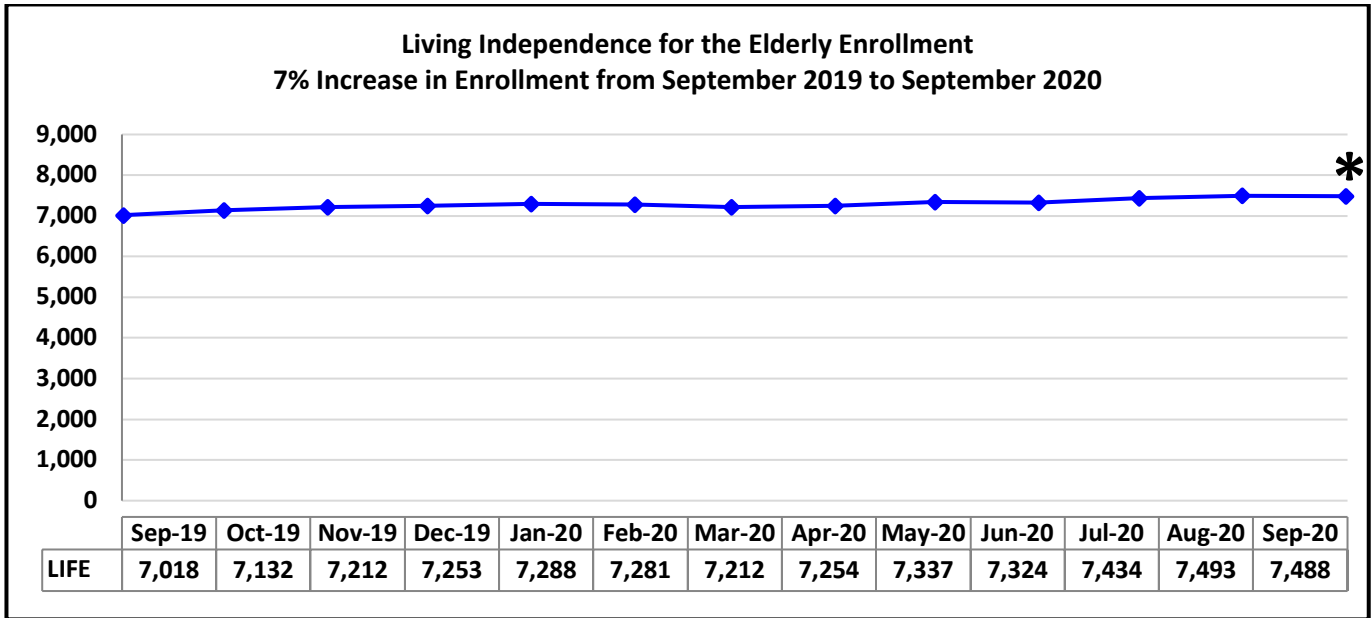
Point-in-time (last day of month) count of unduplicated participants with an Approved Service Plan in DHS’s case management system. The Act 150 provides service coordination, personal assistance and personal emergency response system to individuals with physical disabilities, age 18 through 59, who are mentally alert. This waiver also provides community transition services. This is a state funded program. Participants must be NFCE but are not financially eligible for Medicaid.



Source: DHS Enterprise Data Warehouse

**\*Preliminary Number – will be updated as additional data becomes available**

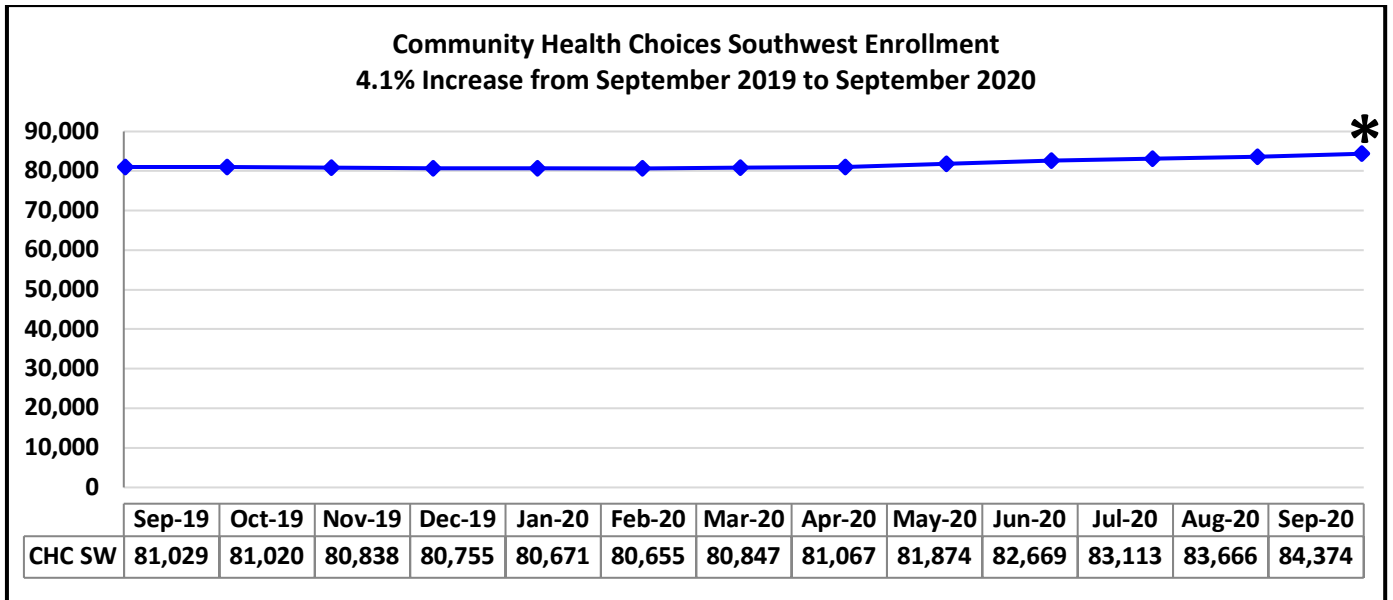
In December 2019, individuals in this waiver were reassessed and some were moved into the Community Health Choices Waiver. Point-in-time (last day of month) count of unduplicated participants with an Approved Service Plan in DHS’s case management system. This waiver provides services to recipients who have developmental physical disabilities which results in at least three substantial functional limitations, age 18 through 59; disability manifested prior to age 22, and the disability is expected to continue indefinitely; requires ICF/ORC level of care.



Source: DHS Enterprise Data Warehouse

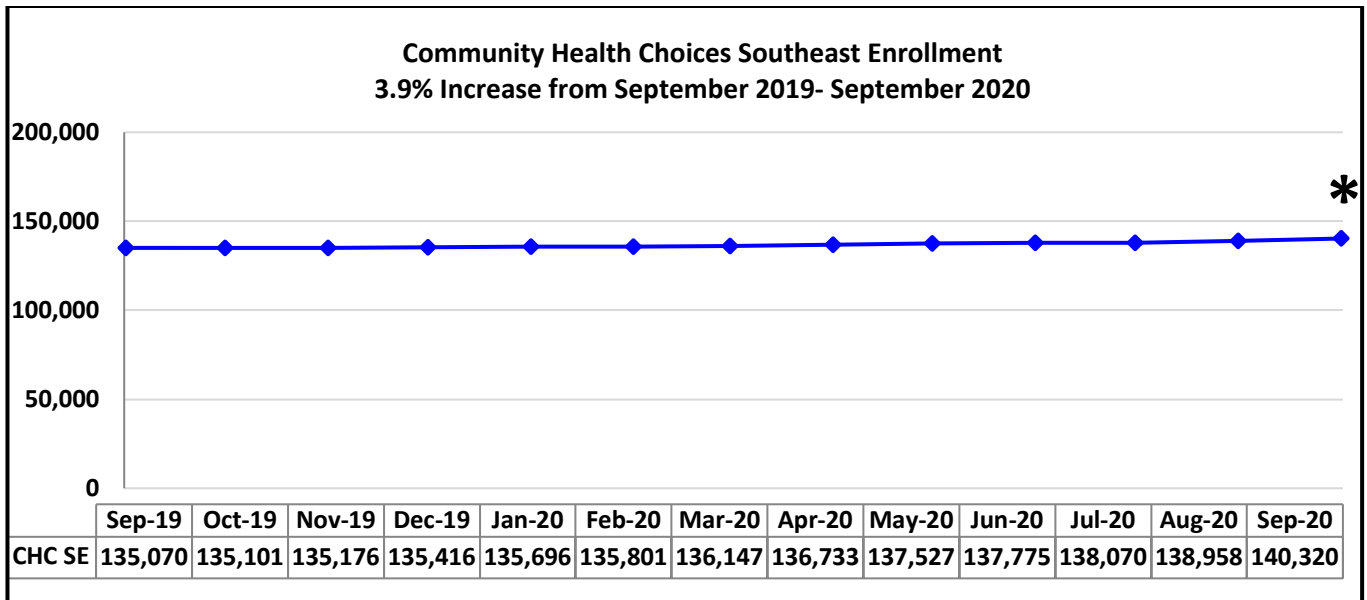
**\*Preliminary Number – will be updated as additional data becomes available.**

Unduplicated count of recipients which had claims in the month requested. LIFE is a managed care program and provides a comprehensive all-inclusive package of services for Pennsylvanians age 55 or older who meet the level of care needs for a Skilled Nursing Facility or a Special Rehabilitation Facility to enable them to maintain independence in their homes for as long as possible. Be age 55 or older, meet NFCE or a special rehabilitation facility, reside in an area served by a LIFE provider and be able to be safely served in the community as determined by a LIFE provider.



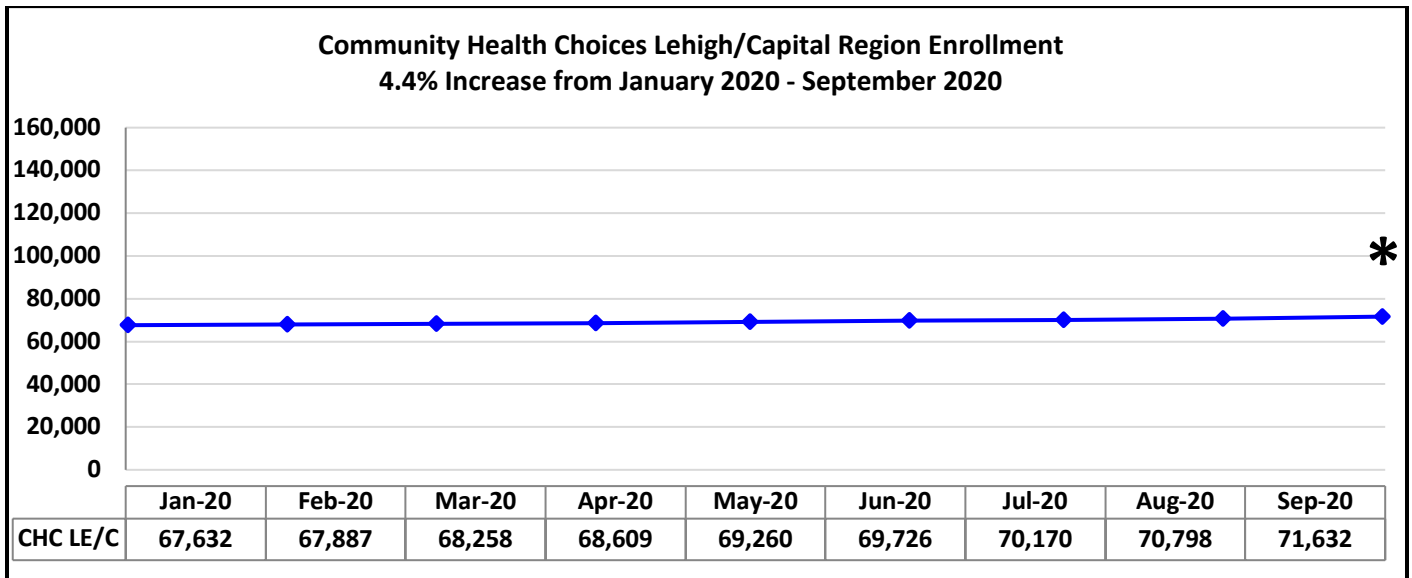
**\*Preliminary Number – will be updated as additional data becomes available**

CHC includes individuals who are 21 years of age or older and dually eligible for Medicare and Medicaid, and Individuals who are 21 years of age or older and eligible for Medicaid (LTSS) because they need the level of care provided by a nursing facility.



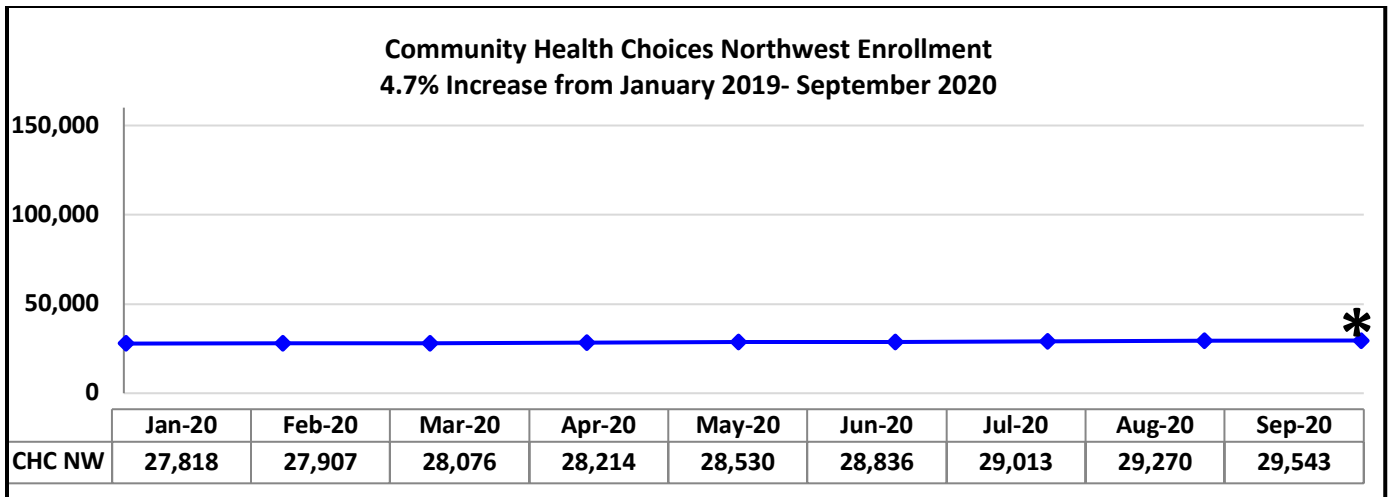
**\*Preliminary Number – will be updated as additional data becomes available**

CHC includes individuals who are 21 years of age or older and dually eligible for Medicare and Medicaid, and Individuals who are 21 years of age or older and eligible for Medicaid (LTSS) because they need the level of care provided by a nursing facility.



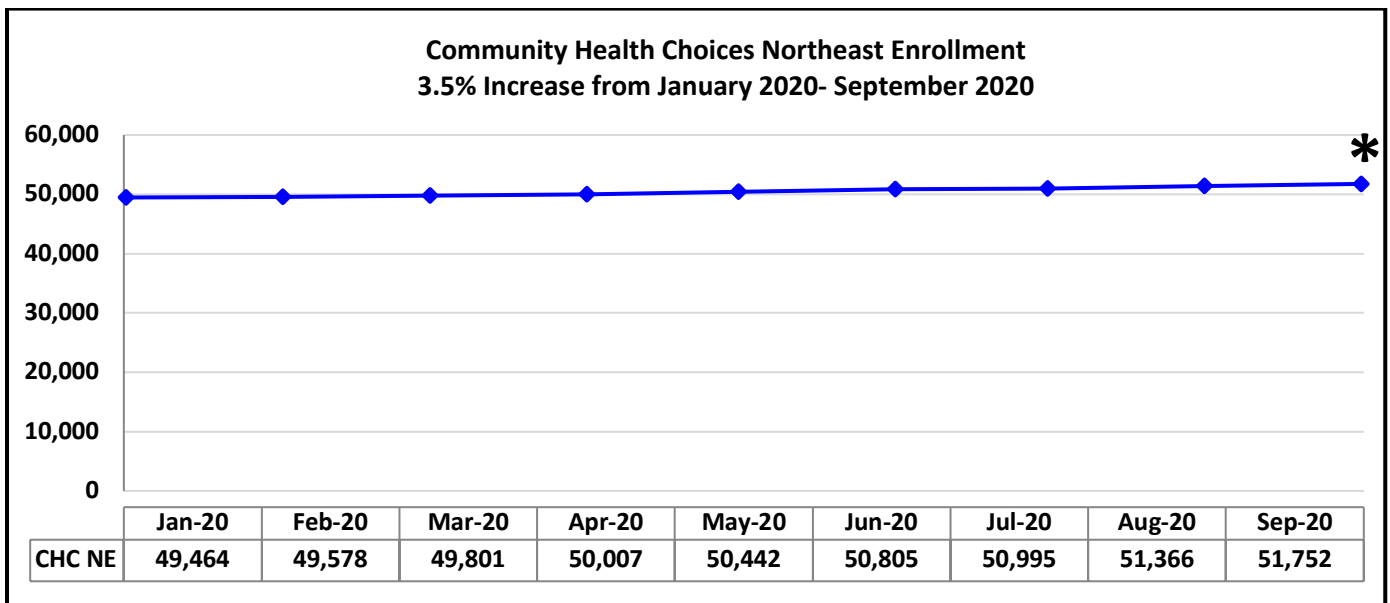
**\*Preliminary Number – will be updated as additional data becomes available**

CHC includes individuals who are 21 years of age or older and dually eligible for Medicare and Medicaid, and Individuals who are 21 years of age or older and eligible for Medicaid (LTSS) because they need the level of care provided by a nursing facility



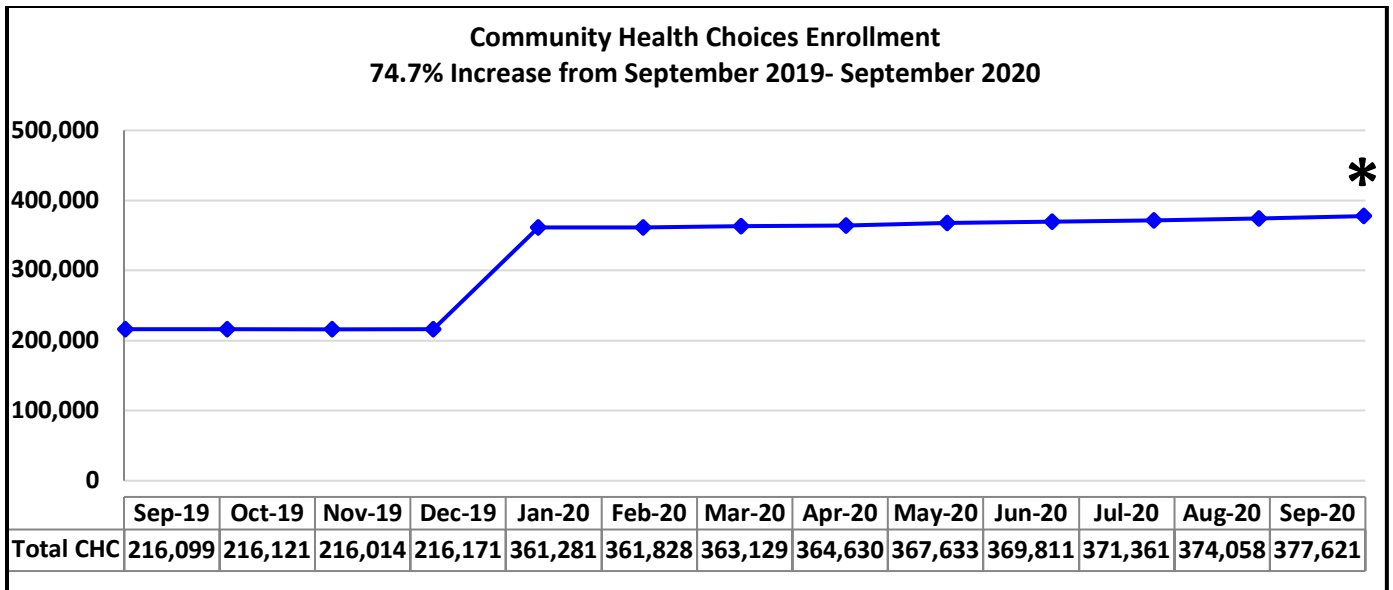
**\*Preliminary Number – will be updated as additional data becomes available**

CHC includes individuals who are 21 years of age or older and dually eligible for Medicare and Medicaid, and Individuals who are 21 years of age or older and eligible for Medicaid (LTSS) because they need the level of care provided by a nursing facility



**\*Preliminary Number – will be updated as additional data becomes available**

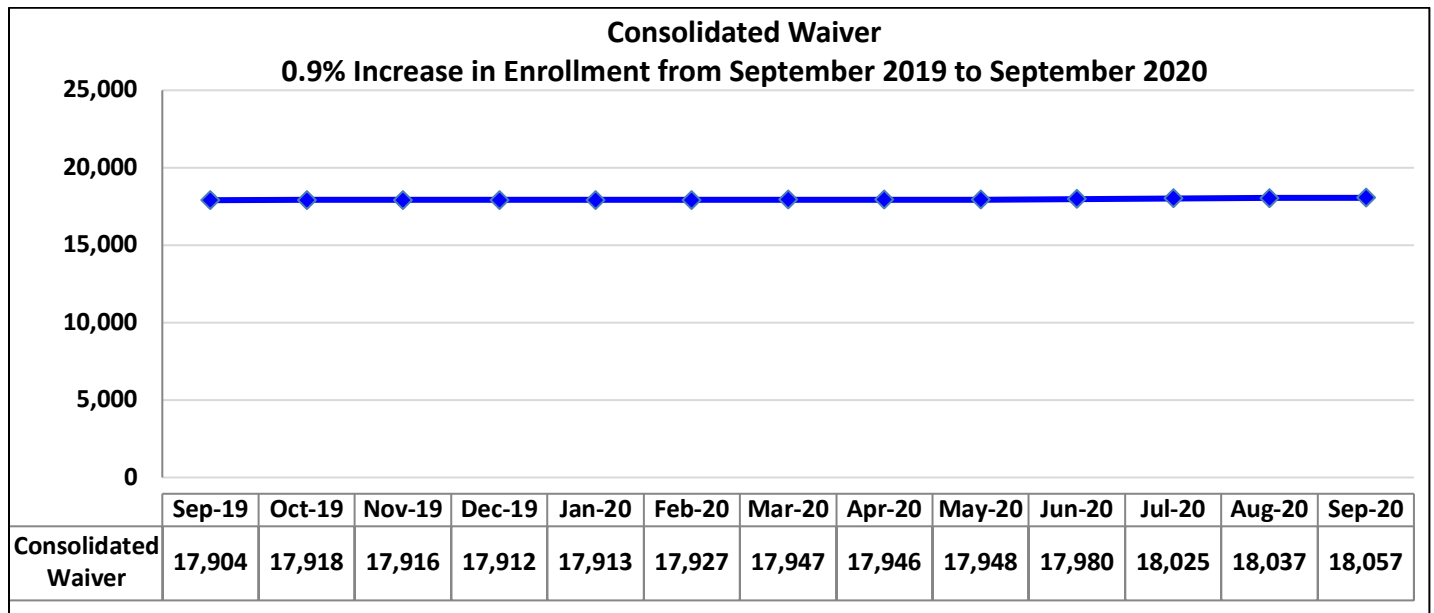
CHC includes individuals who are 21 years of age or older and dually eligible for Medicare and Medicaid, and Individuals who are 21 years of age or older and eligible for Medicaid (LTSS) because they need the level of care provided by a nursing facility



\*Preliminary Number – will be updated as additional data becomes available

**In January 2020, all counties were moved into CHC**

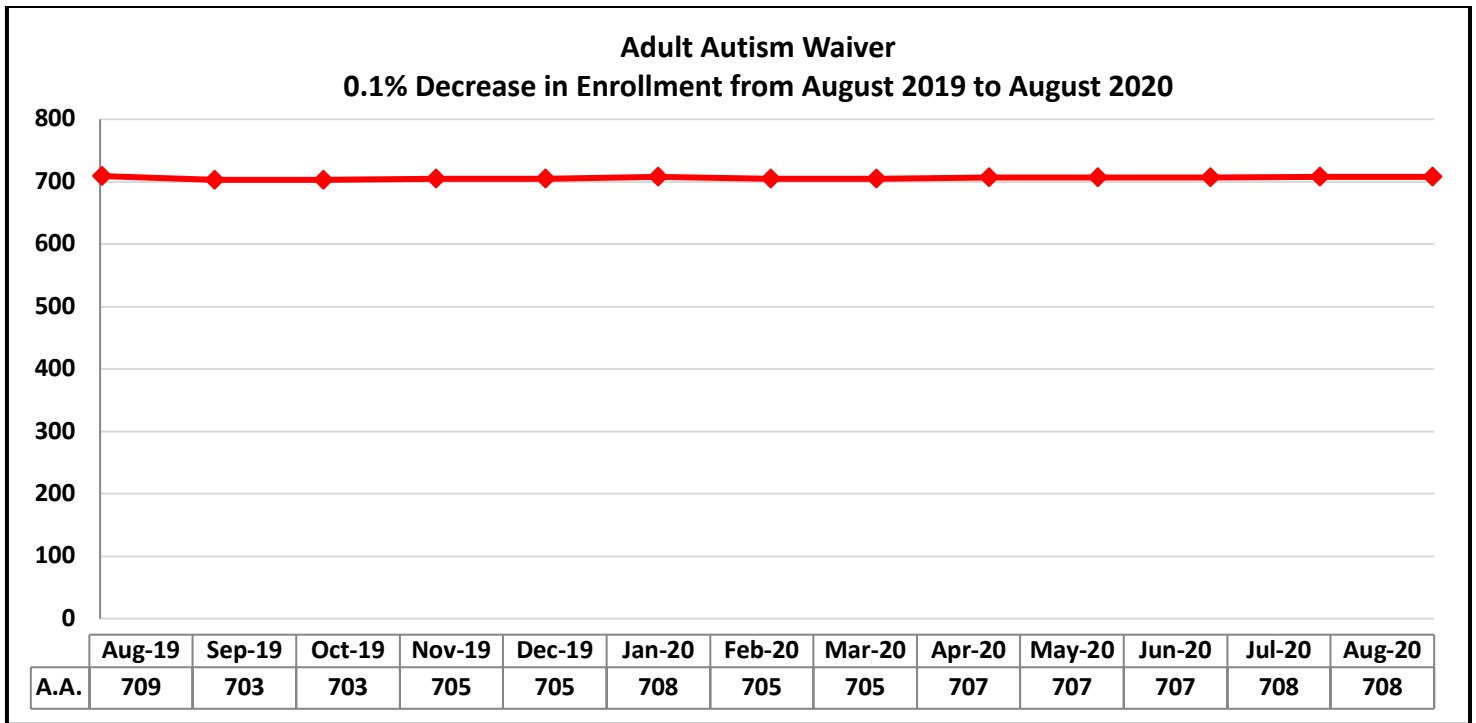
CHC includes individuals who are 21 years of age or older and dually eligible for Medicare and Medicaid, and Individuals who are 21 years of age or older and eligible for Medicaid (LTSS) because they need the level of care provided by a nursing facility.



Source: DHS Enterprise Data Warehouse

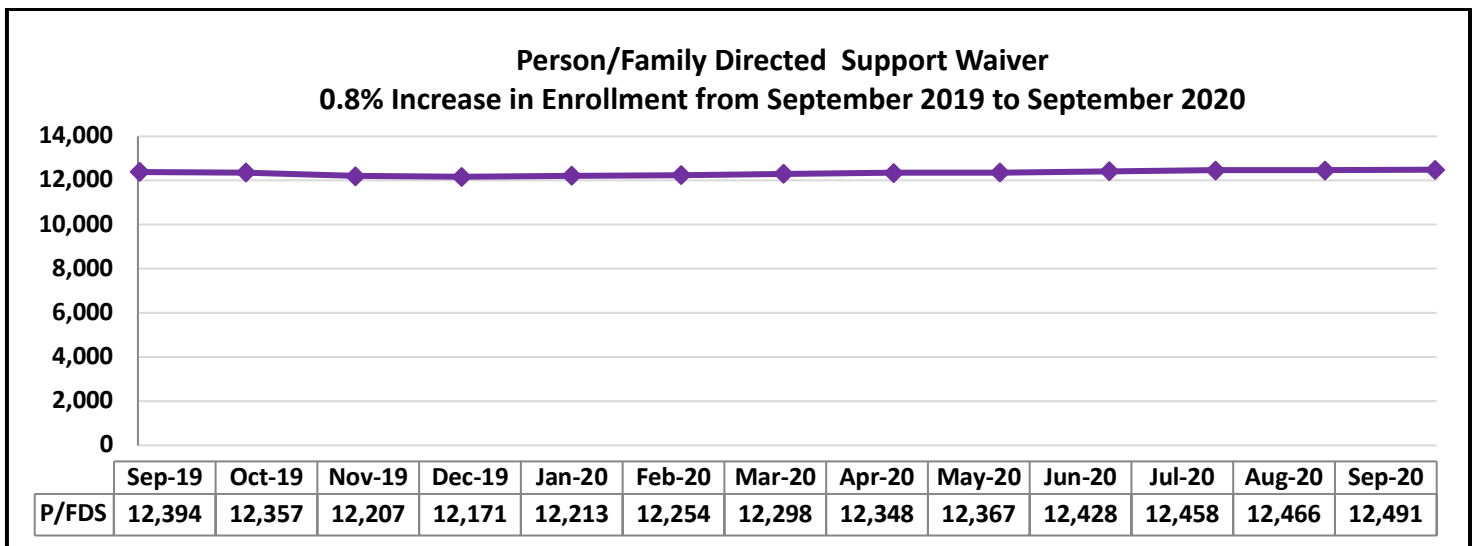
Provides home and community services, including supports coordination and environmental accessibility adaptations, for individuals with intellectual disabilities who require an intermediate care facility level of care.





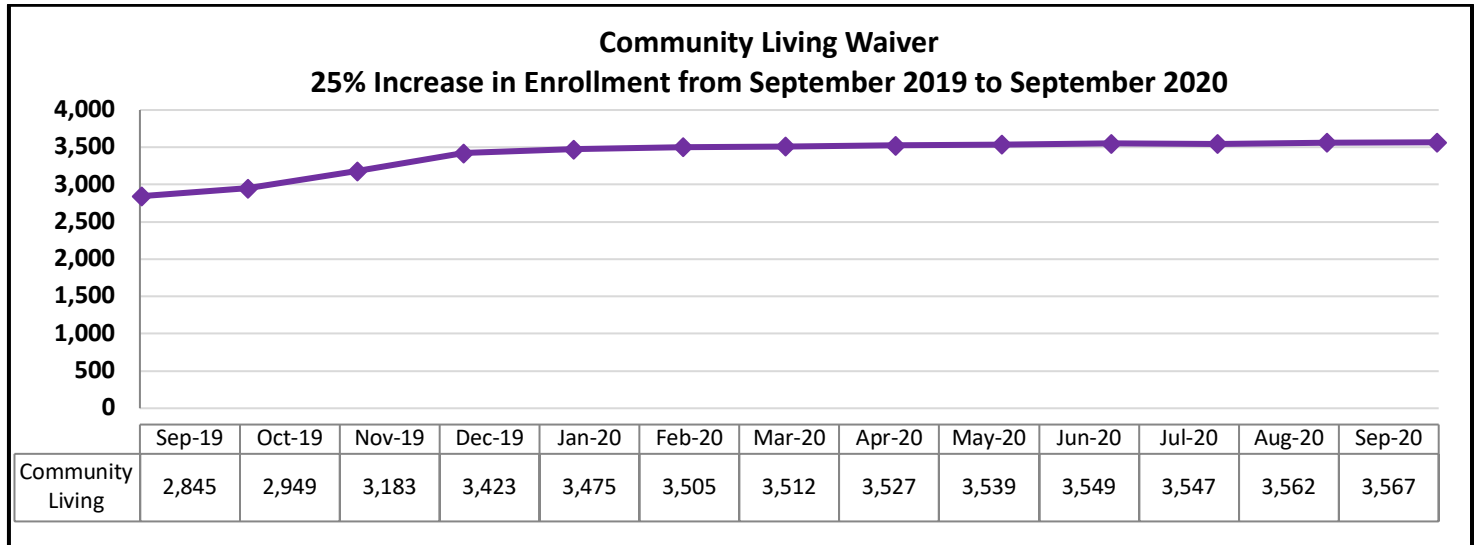
Source: DHS Enterprise Data Warehouse

Provides home and community services to persons, age 21 and over, with autism spectrum disorder to help them participate in their communities.



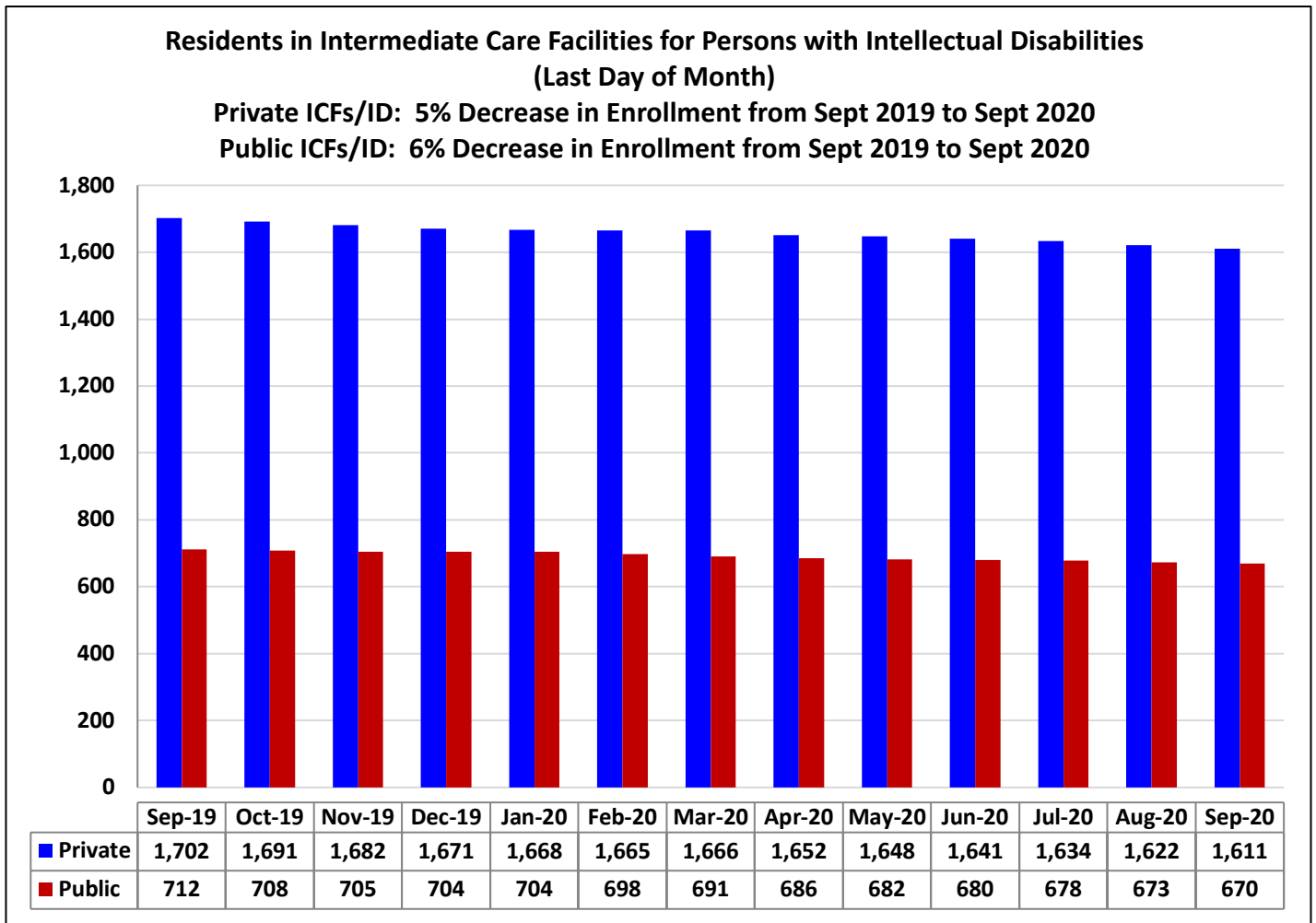
Source: DHS Enterprise Data Warehouse

Provides a limited array of services and supports, such as therapy and nursing and personal support, to individuals with intellectual disabilities who require an intermediate care facility level of care. Aimed primarily at those residing in their homes or with family members.



Source: DHS Enterprise Data Warehouse

The Community Living Waiver is a new waiver that became effective in January 2018. It will support individuals to live more independently in their homes and communities through the provision of a variety of services that promote community living, employment, communication, self-direction, choice and control.



Source: DHS Enterprise Data Warehouse and Mapper/FACT system

**OTHER METRICS**

**Third Party Liability**

	<b>Previous Month</b>	<b>Current Month</b>	<b>FYTD</b>
Recoveries (Casualty, Estate, Health Insurance and HMS)	\$22,091,832 (June 2020)	\$16,487,108 (July 2020)	\$16,487,108
Cost Avoidance (HIPA and Health Insurance)	\$15,661,178 (June 2020)	\$13,726,930 (July 2020)	\$13,726,930

Data Source: TPL Financial Accounting System

**Bureau of Program Integrity**

	<b>Current Month</b>	<b>FYTD</b>
Provider Review Overpayment Recoveries	\$439,953 (July 2020)	\$439,953
Recipient Restriction Cost Avoidance*	\$1,548,900 (July 2020)	\$1,548,900

Data Source: DHS Executive Dashboard