



**Community Health Choices –
Provider Training**

June 4-8, 2018



DBHIDS Vision

We envision a Philadelphia where every individual can achieve health, well-being, and self-determination.

DBHIDS Mission

The mission of the Department of Behavioral Health and Intellectual disAbility Services is to educate, strengthen, and serve individuals and communities so that all Philadelphians can thrive.

June 4-8, 2018



**PHILADELPHIA
BEHAVIORAL
HEALTHCHOICES
PROGRAM**

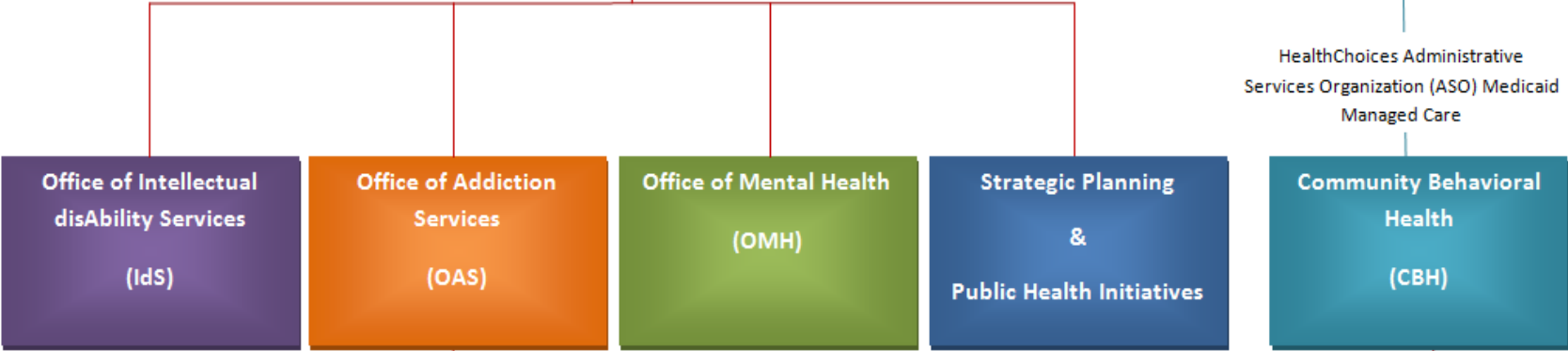
City of Philadelphia

**Department of Behavioral Health
Intellectual disAbility Services**

Community Behavioral Health
Board of Directors

- David T. Jones/President
- Roland C. Lamb/ Vice President
- Keir Bradford-Grey/Member
- Thomas Farley, MD, MPH/Member
- Cynthia F. Figueroa/Member
- Eva Gladstein/Member
- Liz Hersh/Member
- William R. Hite, Jr., Ed.D/Member
- Deborah Irby/Member
- Nicole Mitchell/Member
- Sandy Vasko/Member
- Consumer/Vacant

HealthChoices Administrative
Services Organization (ASO) Medicaid
Managed Care



**Philadelphia
Behavioral Health System**

February 14, 2018

Community Behavioral Health



CBH Vision

CBH will meet the behavioral health needs of the Philadelphia community by assuring access, quality and fiscal accountability through being a high performing, efficient, and nimble organization driven by quality, performance and outcomes.

CBH Mission

We envision CBH as a diverse, innovative, and vibrant organization in which we are empowered to support wellness, resiliency, and recovery for all Philadelphians.

Community Behavioral Health (CBH)

- Philadelphia created CBH in 1997 to provide **administrative services** for the **HealthChoices** Behavioral Health Program.
- CBH is a **501 (C)(3) Non-Profit** with a Board of Directors consisting of both county and external representation.
- CBH sits within the DBHIDS, which falls under the Deputy Managing Director's Office.
- The City of Philadelphia assumes full risk for the HealthChoices behavioral health, maintaining reserves and risk protections consistent with commercial insurers.
- As an Administrative Services Organization (ASO), CBH manages the full spectrum of behavioral services.
- Consistently, CBH has low administrative expenses and retains no excess revenue, thereby allowing all savings to be available for reinvestment.

CBH Departments

Provider Operations

Members Services

- 24/7 Operation
- Provide information on how to obtain services and access community resources, schedule appointments for outpatient treatment or evaluations, conduct outreach and appointment reminders, and more...\

Provider Relations

- Interfaces with all contracted providers of behavioral health services in the CBH network and Out of Network providers
- Assists with contracting, claims, and service descriptions

Contracting and Network Adequacy/Capacity Network Development

Network Development

- Assists in the development of new providers and new programming to the network through the procurement process
- Assists in training of providers in clinical care and documentation

CBH Departments

- Clinical Management
 - Adult, Child, and Cross Systems (All Levels of Care)
 - Inpatient, Outpatient, Partial Programs, CIRC, RTF, BHRS, School Therapeutic Services, Host Homes, LTSR, CRR, Family Based Services
 - Substance Use Treatments: Medicated Assisted Treatment, Detox, Long and Short Term Residential, IOP/OP, Half Way House
 - Case Management, FQHC, Mobile Mental Health, Ancillary Lab Services, Psychological Testing
 - Psychiatric Emergency Services
 - Complex Care and Integrated Care
 - Medical Affairs and Psychological Services

Clinical Management



February 14, 2018

CBH Departments (continued)

- Compliance and HIPAA
- Quality Improvement
- Evidenced Based Practice and Innovation Center (EPIC)
- Performance Evaluation Analytics and Research
- Ethics
- Finance (Including Claims)
- Information Technology (Includes Data Management)

Community Health Choices and CBH

Objectives of Community Health Choices and CBH

- Data Collection
 - Aging waiver data, dual eligible data across CBH
 - Dual eligible and older adults receiving services in the CBH provider network in all Levels of Care
- Network Capacity
 - Visiting providers in the network already treating this population
 - Extension of programs to accommodate CHC populations

Objectives of Community Health Choices and CBH

- Educating the Behavioral Health Provider Network on CHC
 - Blast emails to the provider network
 - Address the CEO's of the provider network at the executive leadership meetings, clinical meetings, provider meetings.
- Adding of New Services and Programming
 - Procurement Proceedings
 - Needs and Resource Assessments

Objectives of Community Health Choices and CBH

- **Coordination with CHC –MCOs**
 - Meet the 3 CHC MCO behavioral health liaisons.
 - Create Letters of Agreement with each.
- **Community and Stakeholder Partnerships**
 - Connections with Community and Social Service Agencies in Philadelphia who are servicing the MLTSS/Older Adult populations.
 - The creation of an Older Adult/MLTSS Behavioral Health Task Force for awareness and as a learning collaborative.
- **Researching Evidenced Based Practices**
 - Attend webinars, seminars and trainings on evidenced based practices with the Older Adult and long term disabled populations.

CBH – Community Health Choices Contact Information

- Joseph J. DiMeo, Jr. – CBH – CHC/MLTSS Initiative Lead – 267-602-2020
joseph.dimeo@phila.gov
- Andrew Devos, CBH Chief Program Officer - 215-413-3100 – Andrew.devos@phila.gov
- CBH Members Services – 1-888-545-2600
- Website: www.dbhids.org