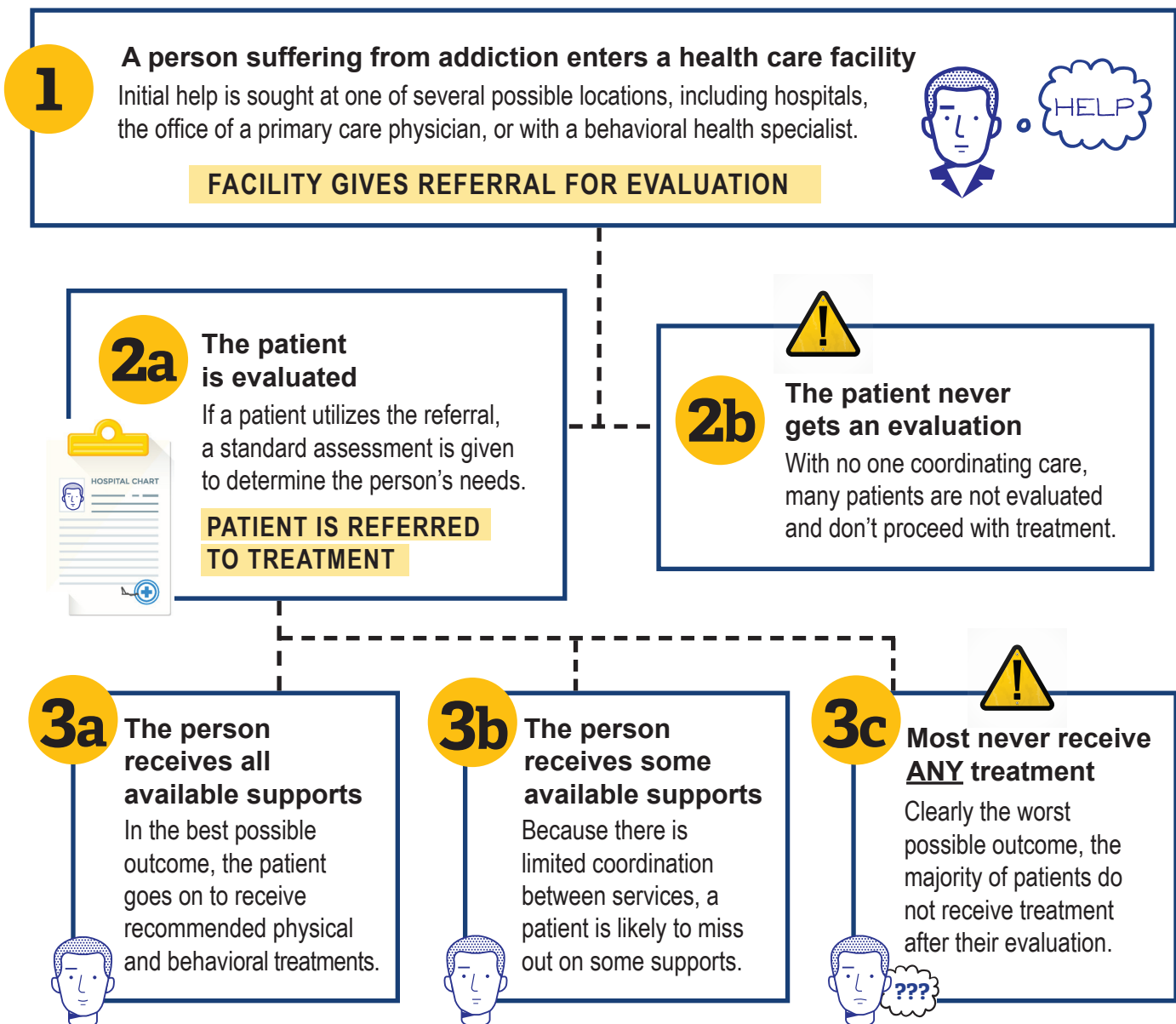


## TREATMENT FOR HEROIN AND OPIOID ADDICTION

# THE CURRENT PROCESS

The treatment path for people who have opioid-related substance use disorder can be difficult for patients to navigate. Without professional coordination of care, many drop out of treatment before they attend follow-up appointments to help them with all of their symptoms (physical and behavioral) and without vital community supports in place.



## KEEPING PEOPLE IN CARE

# CENTERS OF EXCELLENCE

**C**enters of Excellence help ensure that people with opioid-related substance use disorder stay in treatment to receive follow-up care and are supported within their communities. Managed care teams coordinate care and provide warm transitions to new parts of the treatment process. Ideally, it would look like this:

